

N. M. OIL CONS. COM. SIGN  
P. O. BOX 1980  
HOODS, NEW MEXICO 88240  
UNITED STATES  
DEPARTMENT OF THE INTERIOR  
BUREAU OF LAND MANAGEMENT

FORM APPROVED  
OMB NO. 1004-0136  
Expires: February 28, 1995

APPLICATION FOR PERMIT TO DRILL OR DEEPEN

1a. TYPE OF WORK  
DRILL ☒ DEEPEN ☐

b. TYPE OF WELL  
OIL WELL ☐ GAS WELL ☒ OTHER ☐

2. NAME OF OPERATOR  
Burlington Resources Oil & Gas Company

3. ADDRESS AND TELEPHONE NO.  
P.O. Box 51810 Midland, TX 79710-1810 915-688-6943

4. LOCATION OF WELL (Report location clearly and in accordance with any State requirements. \*)  
At surface  
1661' FSL & 2219' FWL  
At proposed prod. zone  
1930' FSL & 1930' FWL Unit K

5. LEASE DESIGNATION AND SERIAL NO.  
ENM 0756 LC 060946

6. IF INDIAN ALLOTTEE OR TRIBE NAME  
Justis '25' Federal # 2

7. UNIT AGREEMENT NAME  
A 8-22

8. FARM OR LEASE NAME, WELL NO.  
Justis '25' Federal # 2

9. API WELL NO.

10. FIELD AND POOL, OR WILDCAT  
Justis Abo

11. SEC., T., R., M., OR BLK. AND SURVEY OR AREA  
25, T25S, R37E

12. COUNTY OR PARISH  
Lea

13. STATE  
NM

14. DISTANCE IN MILES AND DIRECTION FROM NEAREST TOWN OR POST OFFICE\*  
7 miles southeast of Jal, New Mexico

15. DISTANCE FROM PROPOSED\* LOCATION TO NEAREST PROPERTY OR LEASE LINE, FT. (Also to nearest drlg. unit line, if any) 421'

16. NO. OF ACRES IN LEASE  
160

17. NO. OF ACRES ASSIGNED TO THIS WELL  
160

18. DISTANCE FROM PROPOSED LOCATION\* TO NEAREST WELL, DRILLING, COMPLETED, OR APPLIED FOR, ON THIS LEASE, FT. N/A

19. PROPOSED DEPTH  
7000'

20. ROTARY OR CABLE TOOLS  
Rotary

21. ELEVATIONS (Show whether DF, RT, GR, etc.)  
3056'

22. APPROX. DATE WORK WILL START\*  
Upon Approval

23. PROPOSED CASING AND CEMENTING PROGRAM

SIZE OF HOLE	GRADE, SIZE OF CASING	WEIGHT PER FOOT	SETTING DEPTH	QUANTITY OF CEMENT
12 1/4"	8 5/8" K-55	28#	800' WITNESS	88 SXS CIRCULATE
6 1/8"	4 1/2" K-55	11.6#	7000'	2060 SXS CIRCULATE

Not in Designated Potash Area  
Not in Hydrogen Sulfide Area

APPROVAL SUBJECT TO  
GENERAL REQUIREMENTS AND  
SPECIAL STIPULATIONS  
ATTACHED

NOTICE OF STAKING SUBMITTED ON 5/5/97.  
ARCHEOLOGICAL REPORT SUBMITTED VIA FAX ON 6/2/97.

Directional wellbore due to surface restrictions

Contact Person: Donna Williams, 915-688-6943

OPER. OGRID NO. 26485

PROPERTY NO. 21125

POOL CODE 34170

EFF. DATE 7/29/97

API NO. 30-025-34072

IN ABOVE SPACE DESCRIBE PROPOSED PROGRAM: If proposal is to deepen, give data on present productive zone and proposed new productive zone. If proposal is to drill or deepen directionally, give pertinent data on subsurface locations and measured and true vertical depths. Give blowout preventer program, if any.

24. SIGNED [Signature] TITLE Regulatory Compliance DATE 6/3/97

(This space for Federal or State office use)

PERMIT NO. APPROVAL DATE

Application approval does not warrant or certify that the applicant holds legal or equitable title to those rights in the subject lease which would entitle the applicant to conduct operations thereon.  
CONDITIONS OF APPROVAL, IF ANY:

APPROVED BY [Signature] TITLE ADM, MINERALS DATE 7-21-97  
\*See Instructions On Reverse Side

Title 18 U.S.C. Section 1001, makes it a crime for any person knowingly and willfully to make to any department or agency of the United States any false, fictitious or fraudulent statements or representations as to any matter within its jurisdiction.

DISTRICT I  
P. O. Box 1980  
Hobbs, NM 88241-1980

State of New Mexico  
Energy, Minerals, and Natural Resources Department

Form C-102  
Revised 02-10-94

Instructions on back

DISTRICT II  
P. O. Drawer DD  
Artesia, NM 88211-0719

OIL CONSERVATION DIVISION

P. O. Box 2088  
Santa Fe, New Mexico 87504-2088

Submit to the Appropriate  
District Office  
State Lease - 4 copies  
Fee Lease - 3 copies

☐ AMENDED REPORT

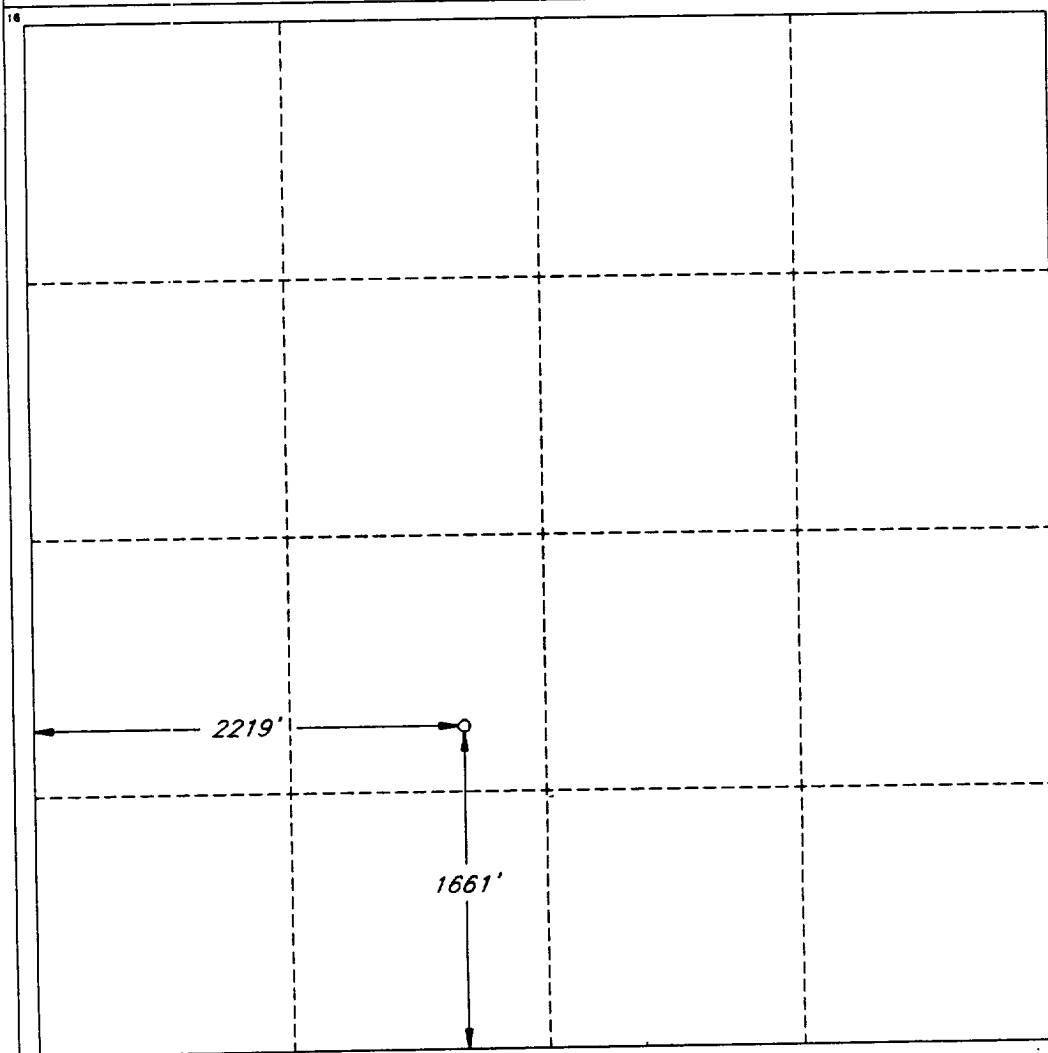
DISTRICT III  
1000 Rio Brazos Rd.  
Aztec, NM 87410

DISTRICT IV  
P. O. Box 2088  
Santa Fe, NM 87507-2088

WELL LOCATION AND ACREAGE DEDICATION PLAT

1 API Number <b>3D-025-34072</b>		2 Pool Code <b>34170</b>		3 Pool Name <b>Justis A</b>					
4 Property Code <b>2125</b>		5 Property Name <b>JUSTICE 25 FEDERAL</b>				6 Well Number <b>2</b>			
7 OGRID No. <b>26485</b>		8 Operator Name <b>BURLINGTON RESOURCES OIL &amp; GAS CO.</b>				9 Elevation <b>3056'</b>			
10 SURFACE LOCATION									
UL or lot no. <b>K</b>	Section <b>25</b>	Township <b>25 SOUTH</b>	Range <b>37 EAST, N.M.P.M.</b>	Lot Ida	Feet from the <b>1661'</b>	North/South line <b>SOUTH</b>	Feet from the <b>2219'</b>	East/West line <b>WEST</b>	County <b>LEA</b>
11 BOTTOM HOLE LOCATION IF DIFFERENT FROM SURFACE									
UL or lot no. <b>K</b>	Section <b>25</b>	Township <b>25S</b>	Range <b>37E</b>	Lot Ida	Feet from the <b>1930'</b>	North/South line <b>South</b>	Feet from the <b>1930'</b>	East/West line <b>West</b>	County
12 Dedicated Acres <b>160</b>		13 Joint or Infill		14 Consolidation Code		15 Order No.			

NO ALLOWABLE WELL BE ASSIGNED TO THIS COMPLETION UNTIL ALL INTERESTS HAVE BEEN CONSOLIDATED OR A NON-STANDARD UNIT HAS BEEN APPROVED BY THE DIVISION



OPERATOR CERTIFICATION

I hereby certify that the information contained herein is true and complete to the best of my knowledge and belief.

Signature  
**Donna Williams**  
Printed Name  
**Regulatory Compliance**  
Title  
**6/3/97**  
Date

SURVEYOR CERTIFICATION

I hereby certify that the well location shown on this plat was plotted from field notes of actual surveys made by me or under my supervision, and that the same is true and correct to the best of my belief.

Date of Survey  
**6/3/97**  
Signature and Seal of Professional Surveyor  
**12128**  
Certificate  
**ROGER M. ROBBINS P.S. #12128**  
JOB #51660 / 20 SW / JSJ

# **BURLINGTON RESOURCES**

MID-CONTINENT DIVISION

June 3, 1997

Bureau of Land Management  
2909 West Second Street  
Roswell, New Mexico 88201

RE: Justice '25' Federal Well No. 2  
1661' FSL & 2219' FWL  
Sec. 25, T25S, R37E  
Lea County, New Mexico

To Whom It May Concern:

In regards to the above referenced proposed well, Burlington Resources is in the process of negotiating the surface agreement with Arco Permian in Midland, Texas.

Should you have any questions, or need additional information, please do not hesitate to contact me at 915-688-6842.

Sincerely,



Randy Gunter  
Right-of-Way  
Division Land Department

ANNULAR  
W/ROTATING HEAD

R-BLIND RAMS

R-PIPE RAMS

DRILLING J' V'

SPOOL

Diagram illustrating a three-way valve assembly with adjustable chokes and pit connections. The assembly consists of a central valve body with three outlets. Each outlet is equipped with an adjustable choke and a valve. The connections are labeled as follows:

- Top outlet: 2" ADJUSTABLE CHOKE, TO PIT, 2"
- Bottom outlet: 6" VALVE, TO PIT, 6"
- Right outlet: 2" ADJUSTABLE CHOKE, TO PIT, 2"

<b>OPERATORS NAME:</b>	<b>Burlington Resources Oil &amp; Gas Company</b>
<b>LEASE NAME AND WELL NO.:</b>	<b>Justice '25' Federal Well No. 2</b>
<b>LOCATION:</b>	<b>1661' FSL &amp; 2219' FWL, Sec. 25, T25S, R37E</b>
<b>FIELD NAME:</b>	<b>Justis Abo</b>
<b>COUNTY:</b>	<b>Lea County, New Mexico</b>
<b>LEASE NUMBER:</b>	<b>NM 0766</b>

The following information is to supplement BLM form 3160-3 Application for permit to drill in accordance with Onshore Oil and Gas Order No. 1:

### 9 - POINT DRILLING PLAN

1. Name and estimated tops of important geologic formation/marker horizons.

<u>FORMATION</u>	<u>DEPTH</u>
Rustler	910'
Seven Rivers	2520'
Abo	6072'

2. Estimated depths at which the top and bottom of formations potentially containing usable water, oil, gas, or prospectively valuable deposits of other minerals are expected to be encountered and the operator's plans for protecting such resources.

Abo	6072'
-----	-------

3. The operator's minimum specifications for Blowout Preventer (BOP) and related equipment to be used and schematic diagrams thereof showing sizes, pressure ratings, and the testing procedures and testing frequency. BOP and BOP - related equipment (BOPE) schematics shall include schematics of choke manifold equipment. Accumulator systems and remote controls shall be utilized.

11" 3M BOP stack to be installed on the 8 5/8" csg. The BOP stack will consist of one blind ram BOP, one pipe ram BOP and a rotating head. Tested to 1500 psi before drilling the 8 5/8" casing shoe.

4. The proposed casing program including size, grade, weights, type of thread and coupling, and the setting depth of each string and its condition (new or acceptably reconditioned). For exploratory wells, or for wells as otherwise specified by the authorized officer, the operator shall include the minimum design factors for tensions, burst, and collapse that are incorporated into the casing design. In cases where tapered casing strings are utilized, the operator shall also include and/or setting depths of each portion.

CASING:

12 1/4" hole, 8 5/8" K-55 28# csg, set @ 800'

6 1/8" hole, 4 1/2" K-55 11.6# csg, set @ 7000'

This well is planned directional due to surface restrictions. Downhole motors and MWD will be utilized to build angle at 3 /100' up a maximum of 15 . KOP @ 4340', horizontal displacement is 397' at the top of the Abo and 565' @ TD, azimuth 312.9 . Total depth is 6811', and 6771' MD, 6700' TVD.

5. The amount and type(s) of cement, including anticipated additives to be used in setting each casing string, shall be described. If stage cementing techniques are to be employed, the setting depth of the stage collars and amount and type of cement, including additives, and preflush amounts to be used in each stage, shall be given. The expected linear fill-up of each cemented string, or each stage when utilizing stage-cementing techniques, shall also be given.

- a. 8 5/8" csg: Cmt w/225 sxs Class 'C' + 4% gel + 2% CaCl<sub>2</sub> + 1/4 pps flocele, tail w/200 sxs Class 'C' + 2% CaCl<sub>2</sub> + 1/4 pps flocele. Circ. to surface.

- b. 4 1/2" csg: Two Stages-Cmt w/250 sxs Class 'H' + .5% CF-2 + 5% Salt. 2nd Stage: Lead w/1660 sxs 'C' Lite + 6% salt, tail w/150 sxs 'C' neat. Circ. to surface.

6. The anticipated characteristics, additives, use, and testing of drilling mud to be employed, along with the types and quantities of mud products to be maintained, shall be given. When air or gas drilling is proposed, the operator shall submit the following specific information:

Mud Program:

0-800' Fresh water, gel and lime system, MW 8.6-9.0

800'-7000' brine, MW, 10.0-10.1 ppg

7. The anticipated testing, logging, and coring procedures to be used, including drill stem testing procedures, equipment, and safety measures.

- a. DST Program: None
- b. Core: None
- c. Mud Logging: One man unit 6000' to TD
- d. Logs to be run: DLL/MSFL/GR/DNL/LDT

The expected bottom-hole pressure and any anticipated abnormal pressures, temperatures or potential hazards that are expected to be encountered, such as lost circulation zones and hydrogen sulfide. The operator's plans for mitigating such hazards shall be discussed. Should the potential to encounter hydrogen sulfide exist, the mitigation procedures shall comply with the provisions of Onshore Oil and Gas Order No. 6.

Bottom hole pressures at TD expected to be 2600 psi. Bottom hole temperature 175 F. There is no anticipated Hydrogen Sulfide in this known drilling area. No abnormal pressures are anticipated.

9. Any other facets of the proposed operation which the operator wishes for BLM to consider in reviewing the application.

Anticipated drilling time expected to be 18 days to TD.