

District I

ite New Mexico

Form C -101

PO Box 1980, Hobbs, NM 88241-1980

Energy, Minerals &amp; Natural Resources Department

Revised October 18, 1994

District II

Instructions on back

811 South First, Artesia, NM 88210

OIL CONSERVATION DIVISION

Submit to Appropriate District Office

District III

2040 South Pacheco

State Lease - 6 Copies

1000 Rio Brazos Rd., Aztec, NM 87410

Santa Fe, NM 87505

Fee Lease - 5 Copies

District IV

2040 South Pacheco, Santa Fe, NM 87505

AMENDED REPORT

## APPLICATION FOR PERMIT TO DRILL, RE-ENTER, DEEPEN, PLUGBACK, OR ADD A ZONE

<sup>1</sup> Operator Name and Address. Primal Energy Corporation 211 Highland Cross, #227 Houston, TX 77073		<sup>2</sup> OGRID Number 154303
		<sup>3</sup> API Number 30-025-34089
<sup>4</sup> Property Code 18949	<sup>5</sup> Property Name Hale State	<sup>6</sup> Well No. 7

<sup>7</sup>Surface Location

UL or lot no.	Section	Township	Range	Lot Idn	Feet from the	N/S Line	Feet from the	E/W Line	County
G	2	25S	37E	G	1650	N	1750	E	Lea

<sup>8</sup>Proposed Bottom Hole Location If Different From Surface

UL or lot no.	Section	Township	Range	Lot Idn	Feet from the	N/S Line	Feet from the	E/W Line	County

<sup>9</sup>Proposed Pool 1

Justis Blinebry

<sup>10</sup>Proposed Pool 2

<sup>11</sup> Work Type Code N P	<sup>12</sup> Well Type Code O	<sup>13</sup> Cable/Rotary R	<sup>14</sup> Lease Type Cod S	<sup>15</sup> Ground Level Elevation 3156'
<sup>16</sup> Multiple N	<sup>17</sup> Proposed Dep	<sup>18</sup> Formation	<sup>19</sup> Contractor	<sup>20</sup> Spud Date


<sup>21</sup> Proposed Casing and Cementing Program

Hole Size	Casing Size	Casing weight/foot	Setting Depth	Sacks of Cement	Estimated TOC

<sup>22</sup> Describe the proposed program. If this application is to DEEPEN or PLUG BACK, give the data on the present zone and proposed new productive zone. Describe the blowout prevention program, if any. Use additional sheets if necessary.

1. Plugback from present perms. in the Drinkard (6095-6134') by setting CIBP at +/- 6000'.
2. Perforate in Blinebry from 5003-5500'. Acidize and frac as necessary.
3. Complete as a single oil well in the Blinebry.

<sup>23</sup> I hereby certify that the information given above is true and complete to the best of my knowledge and belief.

Signature:   
 Printed name: John Abernethy  
 Title: Manager, Operations & Engineering

## OIL CONSERVATION DIVISION

Approved by:

Title:

Approval Date:

Expiration Date:

SEP 15 1994

5

01

DISTRICT I  
P. O. Box 1980  
Albuquerque, NM 88241-1980

State of New Mexico  
Energy, Geology, and Natural Resources Department

Form G-102  
Revised 02-10-94

Instructions on back

DISTRICT II  
P. O. Drawer DD  
Artesia, NM 88211-0719

DISTRICT III  
1000 Rio Brazos Rd.  
Aztec, NM 87410

**OIL CONSERVATION DIVISION**  
P. O. Box 2088  
Santa Fe, New Mexico 87504-2088

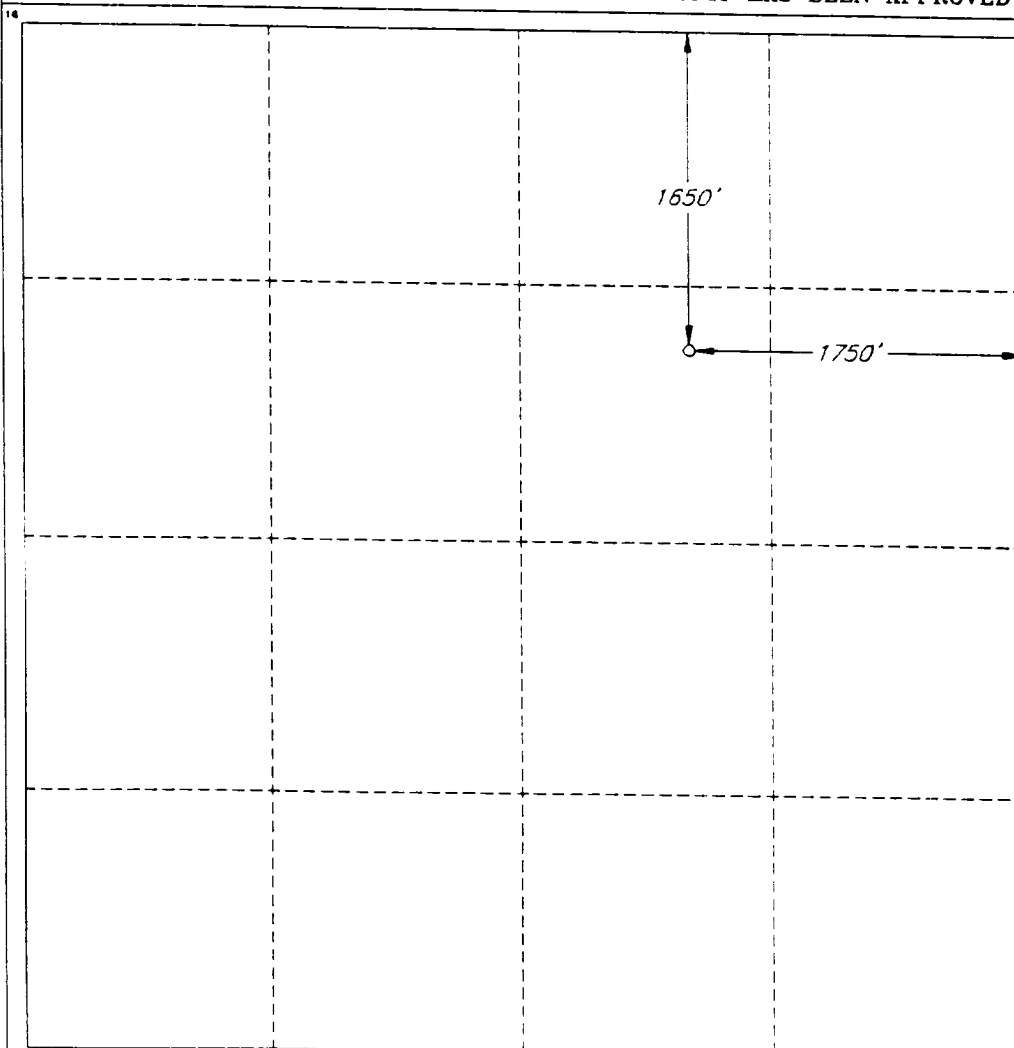
Submit to the Appropriate  
District Office  
State Lease - 4 copies  
Fee Lease - 3 copies

DISTRICT IV  
P. O. Box 2088  
Santa Fe, NM 87507-2088

☐ AMENDED REPORT

**WELL LOCATION AND ACREAGE DEDICATION PLAT**

1 API Number 30-025-34089		2 Pool Code 34200		3 Pool Name JUSTIS BLINEBRY					
4 Property Code 18949		5 Property Name HALE STATE						6 Well Number 7	
7 OGRID No. 154303		8 Operator Name PRIMAL ENERGY CORPORATION						9 Elevation 3156'	
10 SURFACE LOCATION									
UL or lot no. G	Section 2	Township 25 SOUTH	Range 37 EAST, N.M.P.M.	Lot Ida	Feet from the 1650'	North/South line NORTH	Feet from the 1750'	East/West line EAST	County LEA
11 BOTTOM HOLE LOCATION IF DIFFERENT FROM SURFACE									
UL or lot no.	Section	Township	Range	Lot Ida	Feet from the	North/South line	Feet from the	East/West line	County
12 Dedicated Acres		13 Joint or Infill Y		14 Consolidation Code		15 Order No.			
NO ALLOWABLE WELL BE ASSIGNED TO THIS COMPLETION UNTIL ALL INTERESTS HAVE BEEN CONSOLIDATED OR A NON-STANDARD UNIT HAS BEEN APPROVED BY THE DIVISION									



**OPERATOR CERTIFICATION**

I hereby certify that the information contained herein is true and complete to the best of my knowledge and belief.

Signature

Printed Name

JOHN ABERNETHY

Title

Mgr. Oper. & Eng.

Date

9-1-99

**SURVEYOR CERTIFICATION**

I hereby certify that the well location shown on this plat was plotted from field notes of actual surveys made by me or under my supervision, and that the same is true and correct to the best of my belief.

Date of Survey

JULY 17, 1997

Signature and Seal of Professional Surveyor

Certificate No.

ROGER M. ROBBINS P.S. #12128

JOB # 52987 / 20 NW / JSJ