

Contacted Primal and  
told them that they had set  
their surf. pipe in the salt  
zone & were washing out. That's  
why wouldn't circulate. Need to  
perforate 450-1000' and then  
end. to surface.

Chui

District I

PO Box 1980, Hobbs, NM 88241-1980

District II

811 South First, Artesia, NM 88210

District III

1000 Rio Brazos Rd., Aztec, NM 87410

District IV

2040 South Pacheco, Santa Fe, NM 87505

## State of New Mexico

Energy, Minerals &amp; Natural Resources Department

Form C -101

Revised October 18, 1994

Instructions on back

## OIL CONSERVATION DIVISION

2040 South Pacheco  
Santa Fe, NM 87505

Submit to Appropriate District Office

State Lease - 6 Copies

Fee Lease - 5 Copies

☐ AMENDED REPORT

## APPLICATION FOR PERMIT TO DRILL, RE-ENTER, DEEPEN, PLUGBACK, OR ADD A ZONE

<sup>1</sup> Operator Name and Address. Primal Energy Corporation 222 Pennbriht, Suite 116 Houston, TX 77090		<sup>2</sup> OGRID Number 154303
		<sup>3</sup> API Number 30-025-34089
<sup>4</sup> Property Code 18949	Property Name Hale State	<sup>5</sup> Well No. 7

<sup>7</sup>Surface Location

UL or lot no.	Section	Township	Range	Lot Idn	Feet from the	N/S Line	Feet from the	E/W Line	County
G	2	25S	37E		1650	N	1750	E	Lea

<sup>8</sup>Proposed Bottom Hole Location if Different From Surface

UL or lot no.	Section	Township	Range	Lot Idn	Feet from the	N/S Line	Feet from the	E/W Line	County

<sup>9</sup>Proposed Pool 1

Justis Blinbery

<sup>10</sup>Proposed Pool 2

Justis Tubb-Drinkard

<sup>11</sup> Work Type Code N	<sup>12</sup> Well Type Code O	<sup>13</sup> Cable/Rotary R	<sup>14</sup> Lease Type Code S	<sup>15</sup> Ground Level Elevation 3156'
<sup>16</sup> Multiple N	<sup>17</sup> Proposed Depth 6,200'	<sup>18</sup> Formation Drinkard	<sup>19</sup> Contractor Capstar	<sup>20</sup> Spud Date 9/1/97

<sup>21</sup>Proposed Casing and Cementing Program

Hole Size	Casing Size	Casing weight/foot	Setting Depth	Sacks of Cement	Estimated TOC
12 1/4"	8 5/8"	24	1600'	925	Surface
7 7/8"	5 1/2"	15.5	6200'	800	1000'

<sup>22</sup> Describe the proposed program. If this application is to DEEPEN or PLUG BACK, give the data on the present zone and proposed new productive zone. Describe the blowout prevention program, if any. Use additional sheets if necessary.

1. Drill 12 1/4" hole to 1,600'. Set 8 5/8" surface casing and cement to surface with 925 sx. Install and test double ram BOPE.
2. Drill 7 7/8" hole to 6,200'. Log and run 5 1/2" casing to TD. Cement 5 1/2" casing and complete as a single oil well.

I hereby certify that the information given above is true and complete to the best of my knowledge and belief.

Signature:

Printed name:

John Abernethy

Title:

Manager, Operations &amp; Engineering

## OIL CONSERVATION DIVISION

Approved by:

ORIGINAL SIGNED BY CHRIS WILLIAMS  
DISTRICT SUPERVISOR

Title:

Approval Date:

AUG 08 1997

Expiration Date:

DISTRICT I  
P. O. Box 1980  
Hobbs, NM 88241-1980

State of New Mexico  
Energy, Minerals, and Natural Resources Department

Form C-102  
Revised 02-10-94

Instructions on back

DISTRICT II  
P. O. Drawer DD  
Artesia, NM 88211-0719

Submit to the Appropriate  
District Office  
State Lease - 4 copies  
Fee Lease - 3 copies

DISTRICT III  
1000 Rio Brazos Rd.  
Aztec, NM 87410

## OIL CONSERVATION DIVISION

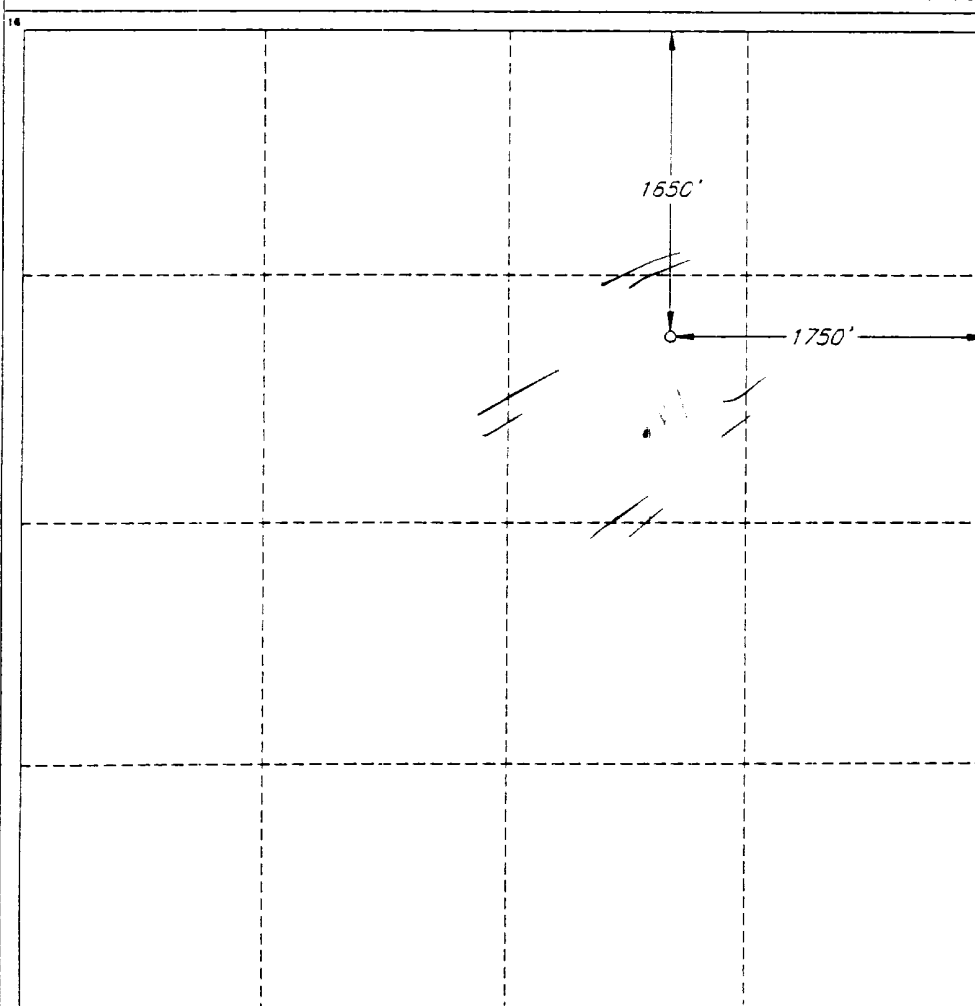
P. O. Box 2088  
Santa Fe, New Mexico 87504-2088

☐ AMENDED REPORT

DISTRICT IV  
P. O. Box 2088  
Santa Fe, NM 87507-2088

### WELL LOCATION AND ACREAGE DEDICATION PLAT

1 API Number <b>30-025-34089</b>		2 Pool Code <b>35280</b>		3 Pool Name <b>JUSTIS TUBB-DRINKARD</b>					
4 Property Code <b>018949</b>		5 Property Name <b>HALE STATE</b>						6 Well Number <b>7</b>	
7 OGRID No. <b>154303</b>		8 Operator Name <b>PRIMAL ENERGY CORPORATION</b>						9 Elevation <b>3156'</b>	
10 SURFACE LOCATION									
UL or lot no. <b>G</b>	Section <b>2</b>	Township <b>25 SOUTH</b>	Range <b>37 EAST, N.M.P.M.</b>	Lot Ida	Feet from the <b>1650'</b>	North/South line <b>NORTH</b>	Feet from the <b>1750'</b>	East/West line <b>EAST</b>	County <b>LEA</b>
11 BOTTOM HOLE LOCATION IF DIFFERENT FROM SURFACE									
UL or lot no.	Section	Township	Range	Lot Ida	Feet from the	North/South line	Feet from the	East/West line	County
12 Dedicated Acres <b>80.00</b> <b>40</b>		13 Joint or Infill <b>J</b>		14 Consolidation Code		15 Order No.			
NO ALLOWABLE WELL BE ASSIGNED TO THIS COMPLETION UNTIL ALL INTERESTS HAVE BEEN CONSOLIDATED OR A NON-STANDARD UNIT HAS BEEN APPROVED BY THE DIVISION									



#### OPERATOR CERTIFICATION

I hereby certify that the information contained herein is true and complete to the best of my knowledge and belief.

Signature

Printed Name

**John Abernethy**  
Title  
**MANAGER, Oper & Eng.**

Date

**8-4-97**

#### SURVEYOR CERTIFICATION

I hereby certify that the well location shown on this plat was plotted from field notes of actual surveys made by me or under my supervision, and that the same is true and correct to the best of my belief.

Date of Survey

**JULY 17, 1997**

Signature and Seal of  
Professional Surveyor

**ROGER M. ROBBINS**  
12123  
REGISTERED PROFESSIONAL SURVEYOR

Certificate No. **ROGER M. ROBBINS P.S. #12128**

JOB # 52987 / 20 NW / JSJ

102345678  
1/2/07  
Received  
Hobbs  
000

TYPE 2-BLOWOUT PREVENTER SPECIFICATIONS  
3M @ 5M WORKING PRESSURE

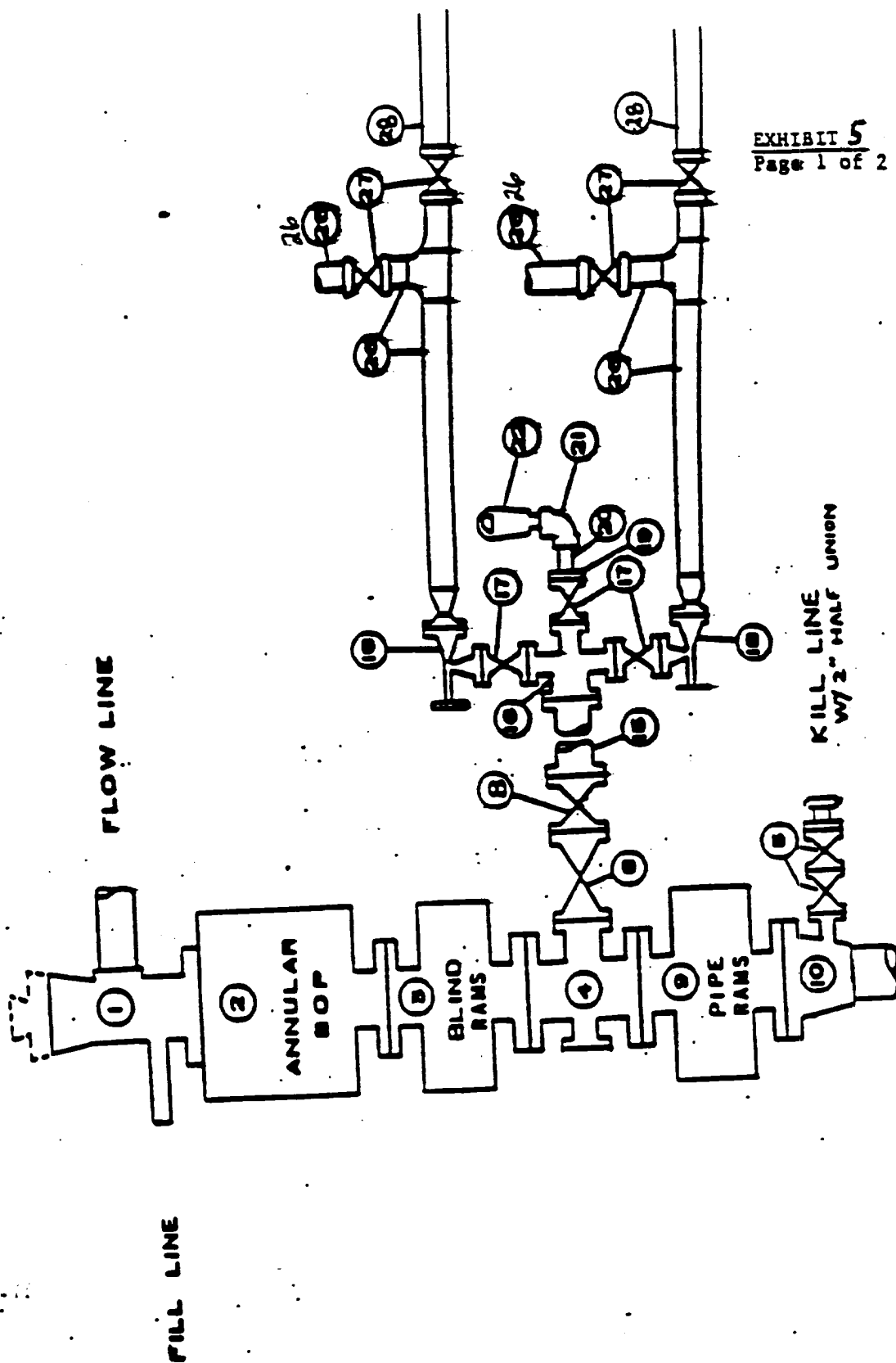


EXHIBIT 5  
Page 1 of 2