

UNITED STATES  
DEPARTMENT OF THE INTERIOR  
BUREAU OF LAND MANAGEMENT

N.M. Oil Cons. Division  
1625 N. French Dr.  
Hobbs, NM 88240  
FORM APPROVED  
Budget Bureau No. 1004-0136  
Expires: December 31, 1991

SUBMIT IN TRIPLICATE

5. Lease Designation and Serial No.  
NM14218

6. If Indian, Alottee or Tribe Name

APPLICATION FOR PERMIT TO DRILL OR DEEPEN

1a. Type of Work **DRILL** ☒ **DEEPEN** ☐  
1b. Type of Well  
OIL ☒ GAS ☐  
WELL ☒ WELL ☐ OTHER ☐ HORIZONTAL ☐  
SINGLE ZONE ☐  
MULTIPLE ZONE ☐

7. If Unit or CA, Agreement Designation

2. Name of Operator  
TEXACO EXPLORATION & PRODUCTION INC.

23

3. Address and Telephone No. **500 N. LORAINE**  
**IN ISLAND, TX 79701 (915) 688-4752**

9. API Well No.  
30-025-34261

4. Location of Well (Report location clearly and in accordance with any State requirements.)

At Surface

Unit Letter I : 1650 Feet From The SOUTH Line and 940 Feet From The EAST Line

At proposed prod. zone

10. Field and Pool, Exploaratory Area  
JUSTIS TUBB DRINKARD

11. SEC., T., R., M., or BLK. and Survey or Area

Sec. 26, Township 24-S, Range 37-E

14. Distance In Miles and Direction from Nearest Town or Post Office\*

12. County or Parish 13. State

LEA

NM

15. Distance From Proposed\* Location to Nearest Property or Lease Line, Ft. (also to nearest drlg. unit line, if any)

16. No. of Acres in Lease

17. No. of Acres Assigned To This Well  
160

18. Distance From Proposed Location\* to Nearest Well, Drilling, Completed or Applied For, On This Lease, Ft.

19. Proposed Depth  
7500'

20. Rotary or Cable Tools

ROTARY

21. Elevations (Show whether DF, RT, GR, etc.)

3166' GL

22. Approx. Date Work Will Start\*

3/5/01

23 PROPOSED CASING AND CEMENT PROGRAM

SIZE OF HOLE	GRADE, SIZE OF CASING	WEIGHT PER FOOT	SETTING DEPTH	QUANTITY OF CEMENT
11"	8 5/8" WC50	24#	925'	525 SX CIRC
7 7/8"	L80/K55, 4 1	11.6#	6400'	1400 SX-YOC

TEXACO INTENDS TO DRILL A HORIZONTAL LATERAL IN THE SUBJECT WELL.

PROPOSED BOTTOM HOLE LOCATION: SECTION 26, T-24-S, R-37-E, 350' FSL, 1800' FEL  
PROPOSED DEPTH: 6091' TVD @ BHL; MAX DEPTH REACHED IN LATERAL = 6188' TVD  
TD=7500' AS MEASURED FROM THE SURFACE  
KICKOFF POINT = 5948'  
TOP OF WINDOW = 5948'  
BOTTOM OF WINDOW = 5954'  
PROPOSED SPUD DATE = 3-05-01

In Above Space Describe Proposed Program: If proposal is to deepen, give data on present productive zone and proposed new productive zone. If proposal is to drill or deepen directionally, give pertinent data on subsurface locations and measured true verticle depths. Give blowout preventer program, if any.

24. I hereby certify that the foregoing is true and correct

SIGNATURE *J. Denise Leake*

TITLE Engineering Assistant

DATE 2/12/01

TYPE OR PRINT NAME J. Denise Leake

(This space for Federal or State office use)

PERMIT NO. APPROVAL DATE

Application approval does not warrant or certify that the applicant holds legal or equitable title to those rights in the subject lease which would entitle the applicant to conduct operations thereon.

APPROVED (ORIG. SGD.) ALEXIS C. SWOBODA

CONDITIONS OF APPROVAL, IF ANY:

TITLE

PETROLEUM ENGINEER

DATE

FEB 16 2001

Title 18 U.S.C. Section 1001, makes it a crime for any person knowingly and wilfully to make to any department or agency of the United States any false, fictitious or fraudulent statements or representations as to any matter within its jurisdiction.

## DISTRICT I

P.O. Box 1980, Hobbs, NM 88241-1980

## DISTRICT II

P.O. Box Drawer DD, Artesia, NM 88211-0719

## DISTRICT III

1000 Rio Brazos Rd., Aztec, NM 87410

## DISTRICT IV

P.O. Box 2088, Santa Fe, NM 87504-2088

State of New Mexico

Energy, Minerals and Natural Resources Department

Form C-102

Revised February 10, 1999

Instructions on back

Submit to Appropriate District Office

State Lease - 4 Copies

Fee Lease - 3 Copies

AMENDED REPORT

## OIL CONSERVATION DIVISION

P.O. Box 2088

Santa Fe, New Mexico 87504-2088

## WELL LOCATION AND ACREAGE DEDICATION PLAT

<sup>1</sup> API Number 30-025-34261	<sup>2</sup> Pool Code 35280	<sup>3</sup> Pool Name JUSTIS TUBB DRINKARD
<sup>4</sup> Property Code 010944	<sup>5</sup> Property Name FRISTOE, C.C. 'B' NCT-2	<sup>6</sup> Well No. 23
<sup>7</sup> OGRID Number 022351	<sup>8</sup> Operator Name TEXACO EXPLORATION & PRODUCTION INC.	<sup>9</sup> Elevation 3166' GL

<sup>10</sup> Surface Location

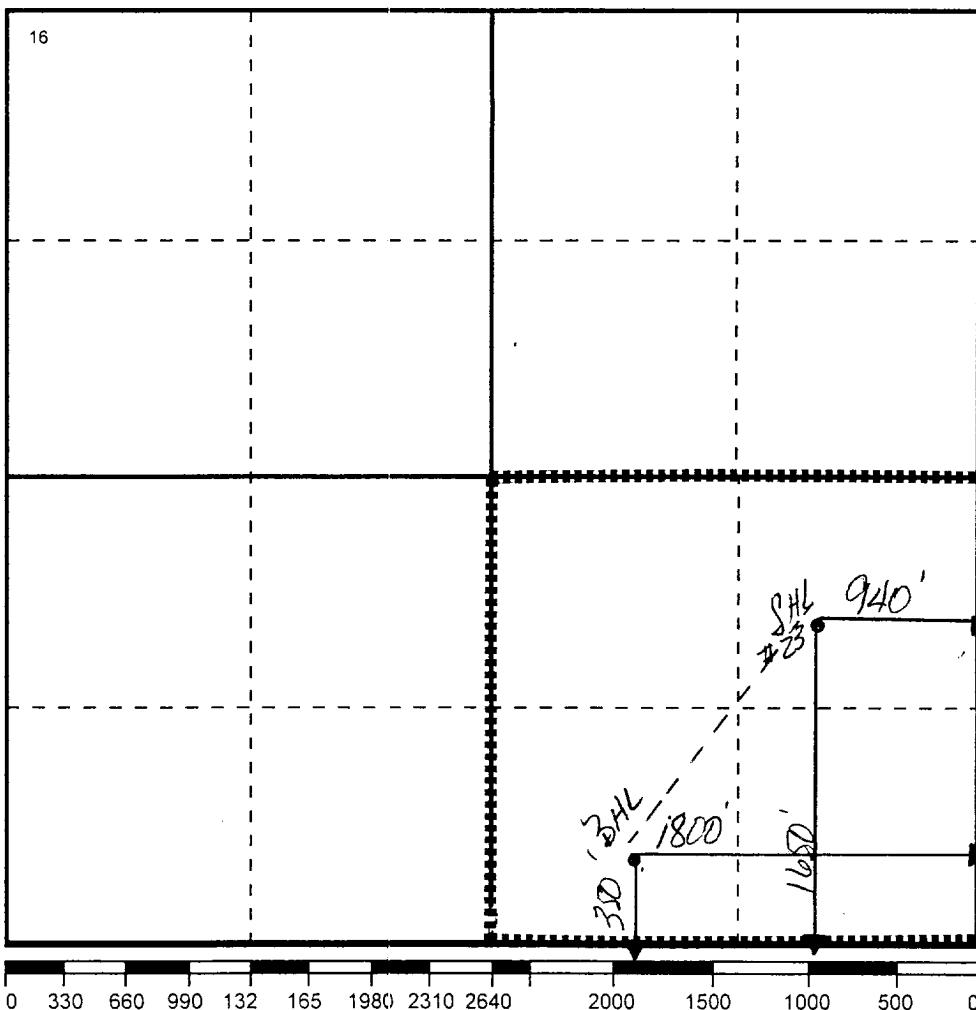
Ul or lot no	Section	Township	Range	Lot.Idn	Feet From The	North/South Line	Feet From The	East/West Line	County
I	26	24-S	37-E		1650	SOUTH	940	EAST	LEA

<sup>11</sup> Bottom Hole Location If Different From Surface

Ul or lot no	Section	Township	Range	Lot.Idn	Feet From The	North/South Line	Feet From The	East/West Line	County
	26	24-S	37-E		350'	SOUTH	1800'	EAST	LEA

<sup>12</sup> Dedicated Acre 160	<sup>13</sup> Joint or Infill No	<sup>14</sup> Consolidation Code	<sup>15</sup> Order No.
-------------------------------------	-------------------------------------	----------------------------------	-------------------------

NO ALLOWABLE WILL BE ASSIGNED TO THIS COMPLETION UNTIL ALL INTERESTS HAVE BEEN CONSOLIDATED  
OR A NON-STANDARD UNIT HAS BEEN APPROVED BY THE DIVISION



## 17 OPERATOR CERTIFICATION

I hereby certify that the information contained herein is true and complete to the best of my knowledge and belief

Signature

Printed Name

J. Denise Leake

Position

Engineering Assistant

Date

2/12/01

## 18 SURVEYOR CERTIFICATION

I hereby certify that the well location shown on this plat was plotted from field notes of actual surveys made by me or under my supervision, and that the same is true and correct to the best of my knowledge and belief.

Date Surveyed

Signature &amp; Seal of

Professional Surveyor

Certificate No.

