

OPER. CCHID NO. 7211  
PROPERTY NO. 22136  
POOL CODE 51020  
DEPARTMENT BUREAU OF  
EFF. DATE 30-025-34278  
API NO. 30-025-34278PLATE  
1000 02  
(a)FORM APPROVED  
OMB NO. 1004-0136  
Expires: February 23, 1995

## APPLICATION FOR F

## 1. TYPE OF WORK

DRILL ☒DEEPEN ☐

## 2. TYPE OF WELL

OIL  
WELL ☒GAS  
WELL ☐

OTHER

SINGLE  
ZONE ☒MULTIPLE  
ZONE ☐

## 3. NAME OF OPERATOR

Enron Oil &amp; Gas Company

## 4. ADDRESS AND TELEPHONE NO.

P. O. Box 2267, Midland, Texas 79702 (915) 686-3714

## 5. LOCATION OF WELL (Report location clearly and in accordance with any State requirements.)

At surface

918' FNL &amp; 908' FEL

At proposed prod. zone

1218' ~~218'~~ 918' FNL & 908' FEL

Unit A

## 6. DISTANCE IN MILES AND DIRECTION FROM NEAREST TOWN OR POST OFFICE

28 miles west of Jal, NM

## 7. DISTANCE FROM PROPOSED

LOCATION TO NEAREST  
PROPERTY OR LEASE LINE, FT.  
(Also to nearest drlg. unit line, if any)908  
4128. DISTANCE FROM PROPOSED LOCATION  
TO NEAREST WELL, DRILLING, COMPLETED,  
OR APPLIED FOR, ON THIS LEASE, FT.

None

## 9. NO. OF ACRES IN LEASE

800

10. NO. OF ACRES ASSIGNED  
TO THIS WELL

40

11. DISTANCE FROM PROPOSED LOCATION  
TO NEAREST WELL, DRILLING, COMPLETED,  
OR APPLIED FOR, ON THIS LEASE, FT.

None

12800

## 12. ROTARY OR CABLE TOOLS

Rotary

## 13. ELEVATIONS (Show whether DF, RT, GR, etc.)

3357' GR

CARLSBAD CONTROLLED WATER BASIN

## 14. APPROX. DATE WORK WILL START

November 15, 1997

## 15. PROPOSED CASING AND CEMENTING PROGRAM

SIZE OF HOLE	GRADE SIZE OF CASING	WEIGHT PER FOOT	SETTING DEPTH	QUANTITY OF CEMENT
14-3/4	H-40 ST&C 11 3/4	42#	650'	400 sacks CIRCULATED
11"	J-55 ST&C 8 5/8	32#	5200'	1350 sacks CIRCULATED
7-7/8"	N-80, L-80 5 1/2	17#	12800'	850 sacks
	CF-95 LT&C			

WITNESS

The Undersigned accepts all applicable terms, conditions, stipulations, and restrictions concerning operations conducted on leased land or portions thereof as shown below:

NM 94109

Javelina 21 Fed #2

Sec 21, T25S, R34E - Lea County, NM

Federal Bond # is MT 0748 with  
endorsement to New MexicoAPPROVAL SUBJECT TO  
GENERAL REQUIREMENTS AND  
SPECIAL STIPULATIONS  
ATTACHEDRECEIVED  
OCT - 9 A 10:55  
11/10/97acc  
11/25/97

IN ABOVE SPACE DESCRIBE PROPOSED PROGRAM: If proposal is to deepen, give data on present productive zone and proposed new productive zone. If proposal is to drill or deepen directionally, give pertinent data on subsurface locations and measured and true vertical depths. Give blowout preventer program, if any.

24. SIGNED Betty Gildon TITLE Regulatory AnalystDATE 10/8/97

(This space for Federal or State office use)

PERMIT NO.

APPROVAL DATE

Application approval does not warrant or certify that the applicant holds legal or equitable title to those rights in the subject lease which would entitle the applicant to conduct operations thereon.

CONDITIONS OF APPROVAL, IF ANY:

ORIG. SGD. TONY L. FERGUSON

ADM. MINERALS

APPROVED BY

TITLE

DATE

12-1-97

\*See Instructions On Reverse Side

If you wish to make a copy of this document, please contact the

District I  
PO Box 1980, Hobbs, NM 88241-1980

District II  
PO Drawer DD, Artesia, NM 88211-0719

District III  
1000 Rio Brazos Rd., Artec, NM 87410

District IV  
PO Box 2088, Santa Fe, NM 87504-2088

State of New Mexico  
Energy, Minerals & Natural Resources Department

OIL CONSERVATION DIVISION  
PO Box 2088  
Santa Fe, NM 87504-2088

Form C-102  
Revised February 21, 1994  
Instructions on back  
Submit to Appropriate District Office  
State Lease - 4 Copies  
Fee Lease - 3 Copies

☐ AMENDED REPORT

WELL LOCATION AND ACREAGE DEDICATION PLAT

*API Number 30-025-34278		*Pool Code 51020	*Pool Name Red Hills Bone Spring
*Property Code 22136	*Property Name JAVELINA "21" FEDERAL		*Well Number 2
*OGRD No. 7377	*Operator Name ENRON OIL & GAS COMPANY		*Elevation 3360'

<sup>10</sup> Surface Location

UL or lot no.	Section	Township	Range	Lot Idn	Feet from the	North/South line	Feet from the	East/West line	County
A	21	25-S	34-E		1218	NORTH	908	EAST	LEA

<sup>11</sup> Bottom Hole Location If Different From Surface

UL or lot no.	Section	Township	Range	Lot Idn	Feet from the	North/South line	Feet from the	East/West line	County
*Dedicated Acres 80	*Joint or Infill	*Consolidation Code		*Order No. WSL-3912					

NO ALLOWABLE WILL BE ASSIGNED TO THIS COMPLETION UNTIL ALL INTERESTS HAVE BEEN CONSOLIDATED  
OR A NON-STANDARD UNIT HAS BEEN APPROVED BY THE DIVISION

<p>16</p> <p>LAT.=32°07'11.29547 LONG.=103°28'07.80118 Y=408381.0 X=767645.7</p>	<p>17 OPERATOR CERTIFICATION</p> <p>I hereby certify that the information contained herein is true and complete to the best of my knowledge and belief.</p> <p><i>Linda Johnston</i></p> <p>Signature _____</p> <p>Linda Johnston</p> <p>Printed Name _____</p> <p>Agent</p> <p>Title _____</p> <p>11/26/97</p> <p>Date _____</p>	
	<p>18 SURVEYOR CERTIFICATION</p> <p>I hereby certify that the well location shown on this plat was plotted from field notes of actual surveys made by me or under my supervision, and that the same is true and correct to best of my belief.</p> <p>NOVEMBER 25 1997</p> <p>Date of Survey _____</p> <p>Signature and Seal of the Surveyor _____</p> <p>8278</p> <p>Certificate Number _____</p>	
	<p>8278</p>	
	<p>8278</p>	

## DRILLING PROGRAM

ENRON OIL & GAS COMPANY  
JAVELINA 21 FEDERAL No. 2  
918' FNL & 908' FEL  
Sec 21, T25S, R34E  
Lea County, New Mexico

### 1. GEOLOGIC NAME OF SURFACE FORMATION:

Permian

### 2. ESTIMATED TOPS OF IMPORTANT GEOLOGIC MARKERS:

Rustler	850'
Delaware Mountain Group	5170'
3rd Bone Spring Sand	12475'
TD	12800'

### 3. ESTIMATED DEPTHS OF ANTICIPATED FRESH WATER, OIL OR GAS:

Upper Permian Snads	100'	Fresh Water
3rd Bone Spring Sand	12475'	Oil

### 4. CASING PROGRAM:

Hole Size	Interval	OD CSG	Wt Grade Jt Cond. Type
14-3/4"	0 - 650'	11-3/4"	42# H-40 ST&C
11"	0 - 5200'	8-5/8"	32# J-55 ST&C
7-7/8"	0 - 12800'	5-1/2"	17# N-80, L-80 CF-95 LT&C

#### CEMENTING PROGRAM:

0-6400', CF-95  
6400-10666 N-80  
10666-12800 L-80

11-3/4" Surface Casing: Cement to surface with 250 sx Prem Plus + 2% CaCl + 3# Econolite and 1/4#/sx Flocele; and 150 sx Prem Plus + 2% CaCl.

8-5/8" Intermediate: Cement to surface with 1200 sacks Prem Plus 50/50 Poz A and 10% gel, 8#/sx salt, 1/4#/sx Flocele; and 150 sx Prem Plus + 2% CaCl.

5-1/2" Prod. Casing: Cement with 650 sx C1 H, 3% Econo, 0.25#/sx Flocele, 5# salt/sx; and 200 sx C1 H 50/50 Poz A, 2% Howco gel, 1% KCl, 0.5% Halad-477, 0.2% HR-5, 1/4#/sx D-Air.

1997 OCT 10 A 4: 47

RECEIVED

RECEIVED  
1997 OCT 10 A 4: 47  
BUREAU OF LAND MGMT  
ROSWELL OFFICE

5. MINIMUM SPECIFICATIONS FOR PRESSURE CONTROL:

The blowout preventer equipment shown in Exhibit #1 will consist of a double ram-type (5000 psi WP) preventer and an annular preventer (5000 psi WP). Units will be hydraulically operated and the ram-type will be equipped with blind rams on top and drill pipe rams on bottom. All will be installed on the 11-3/4" surface casing and used continuously until TD is reached. All BOP's and accessory equipment will be tested to 600 psi before drilling out of surface casing. Before drilling out of intermediate casing, the ram-type BOP and accessory equipment will be tested to 5000 psi and the annular to 70% of rated working pressure (3500 psi).

Pipe rams will be operationally checked each 24 hour period. Blind rams will be operationally checked on each trip out of the hole. The checks will be noted on the daily tour sheets. A 2" kill line and 4" choke line will be included in the drilling spool located below the ram-type BOP. Other accessories to the BOP equipment will include a kelly cock and floor safety valve (inside BOP) and choke lines and choke manifold with 5000 psi WP rating.

6. TYPES AND CHARACTERISTICS OF THE PROPOSED MUD SYSTEM:

The well will be drilled to TD with a combination of Brine, cut brine, and polymer/KCL mud system. The applicable depths and properties of this system are as follows:

<u>Depth</u>	<u>TYPE</u>	<u>Weight (ppg)</u>	<u>Viscosity (sec)</u>	<u>Waterloss (cc)</u>
0- 650'	Fresh Water (spud)	8.5	40-45	N.C.
650-5200'	Brine Water	10.0	30	N.C.
5200'-TD	Cut Brine & Polymer/KCL	8.8-9.2	28	N.C.

Sufficient mud materials to maintain mud properties and meet minimum lost circulation and weight increase requirements will be kept at the wellsite at all times.

7. AUXILIARY WELL CONTROL AND MONITORING EQUIPMENT:

- (A) A kelly cock will be kept in the drill string at all times.
- (B) A full opening drill pipe stabbing valve (inside BOP) with proper drill pipe connections will be on the rig floor at all times.
- (C) A mud logging unit complete with H<sub>2</sub>S detector will be continuously monitoring drilling penetration rate and hydrocarbon shows from 2000' to TD.

4  
RECEIVED  
OCT 10 1997

RECEIVED  
1997 OCT 10 A 11:47  
BOSWELL OFFICE  
BUREAU OF LAND MANAGEMENT

ENRON OIL & GAS COMPANY

JAVELINA 21 FEDERAL NO. 2

ATTACHMENT I

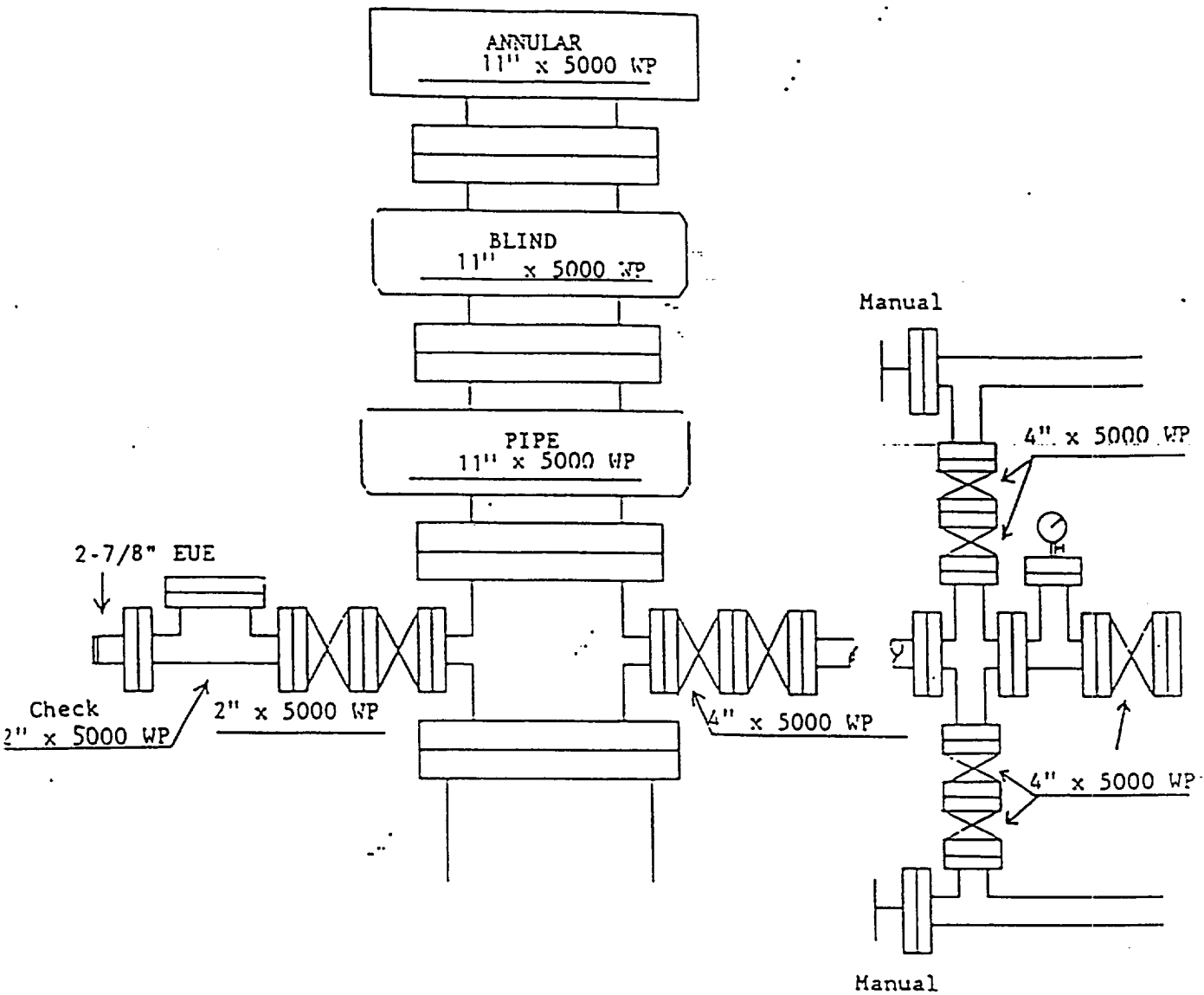


EXHIBIT #1

RECEIVED  
OCT 10 1947  
BUREAU OF LAND MANAGEMENT

RECEIVED  
OCT 10 A 4:47  
BUREAU OF LAND MANAGEMENT  
ROSWELL OFFICE



ATTACHMENT TO EXHIBIT #1  
ENRON OIL & GAS COMPANY

1. Drilling nipple to be so constructed that it can be removed without use of a welder through rotary table opening, with minimum I.D. equal to preventer bore.
2. Wear ring to be properly installed in head.
3. Blow out preventer and all fittings must be in good condition, 5000 psi W.P. minimum.
4. All fittings to be flanged.
5. Safety valve must be available on rig floor at all times with proper connections, valve to be full bore 5000 psi W.P. minimum.
6. All choke and fill lines to be securely anchored, especially ends of choke lines.
7. Equipment through which bit must pass shall be at least as large as the diameter of the casing being drilled through.
8. Kelly cock on kelly.
9. Extension wrenches and hand wheels to be properly installed.
10. Blow out preventer control to be located as close to driller's position as feasible.
11. Blow out preventer closing equipment to include minimum 40 gallon accumulator, two independent sources of pump power on each closing unit installation, and meet all API specifications.

RECEIVED  
1997 OCT 10 A 11:47  
BUREAU OF LAND MGMT.  
ROSWELL OFFICE

RECEIVED  
1997 OCT 10 A 11:47  
BUREAU OF LAND MGMT.  
ROSWELL OFFICE

8. LOGGING, TESTING AND CORING PROGRAM:

(A) The electric logging program will consist of GR-Neutron Density and GR-Sonic from TD to intermediate casing with a GR-Neutron run from intermediate casing to surface.

(B) Possible side-wall cores based on shows.

9. ABNORMAL CONDITIONS, PRESSURES, TEMPERATURES AND POTENTIAL HAZARDS:

No abnormal pressures or temperatures are anticipated. The estimated bottom-hole temperature (BHT) at TD is 170 degrees F with an estimated maximum bottom-hole pressure (BHP) at TD of 5900 psig. No hydrogen sulfide or other hazardous gases or fluids have been encountered, reported or are known to exist at this depth in this area. No major loss circulation zones have been reported in offsetting wells.

10. ANTICIPATED STARTING DATE AND DURATION OF OPERATIONS:

The drilling operation should be finished in approximately three weeks. If the well is productive, an additional 30 to 45 days will be required for completion and testing before a decision is made to install permanent facilities.

Received  
Date: 10/10/47

RECEIVED  
OCT 10 A 4:47  
POSTAL OFFICE

## SURFACE USE AND OPERATIONS PLAN

### 1. EXISTING ROADS:

Access to location will be made as shown on Exhibit 2. New access road to be constructed will measure 2005' in length and 50' in width.

Routine grading and maintenance of existing roads will be conducted as necessary to maintain their condition as long as any operations continue on this lease.

### 2. PROPOSED ACCESS ROAD:

No turnouts required.

No culverts, cattleguards, gates, low-water crossings are necessary.

Surfacing material consist of native caliche to be obtained from the nearest BLM-approved caliche pit. Any additional materials required will be purchased from the dirt contractor.

### 3. LOCATION OF EXISTING WELLS:

Exhibit #3 shows all existing wells within a one-mile radius of this well.

### 4. LOCATION OF EXISTING AND/OR PROPOSED FACILITIES:

There are no existing production facilities. If production is encountered, a temporary facility will be established on the drill pad, and if warranted, a production facility would be built at a later date in the immediate area of the drill-pad location. If the well is productive, the flowline would also be located on the drill-pad site and no additional disturbance will occur.

### 5. LOCATION AND TYPE OF WATER SUPPLY:

Brine water for drilling will be purchased from commercial sources and transported to the well side over the roads as shown on Exhibit #2. Fresh water will be pumped from a fresh water well.

### 6. PLANS FOR RESTORATION OF THE SURFACE.

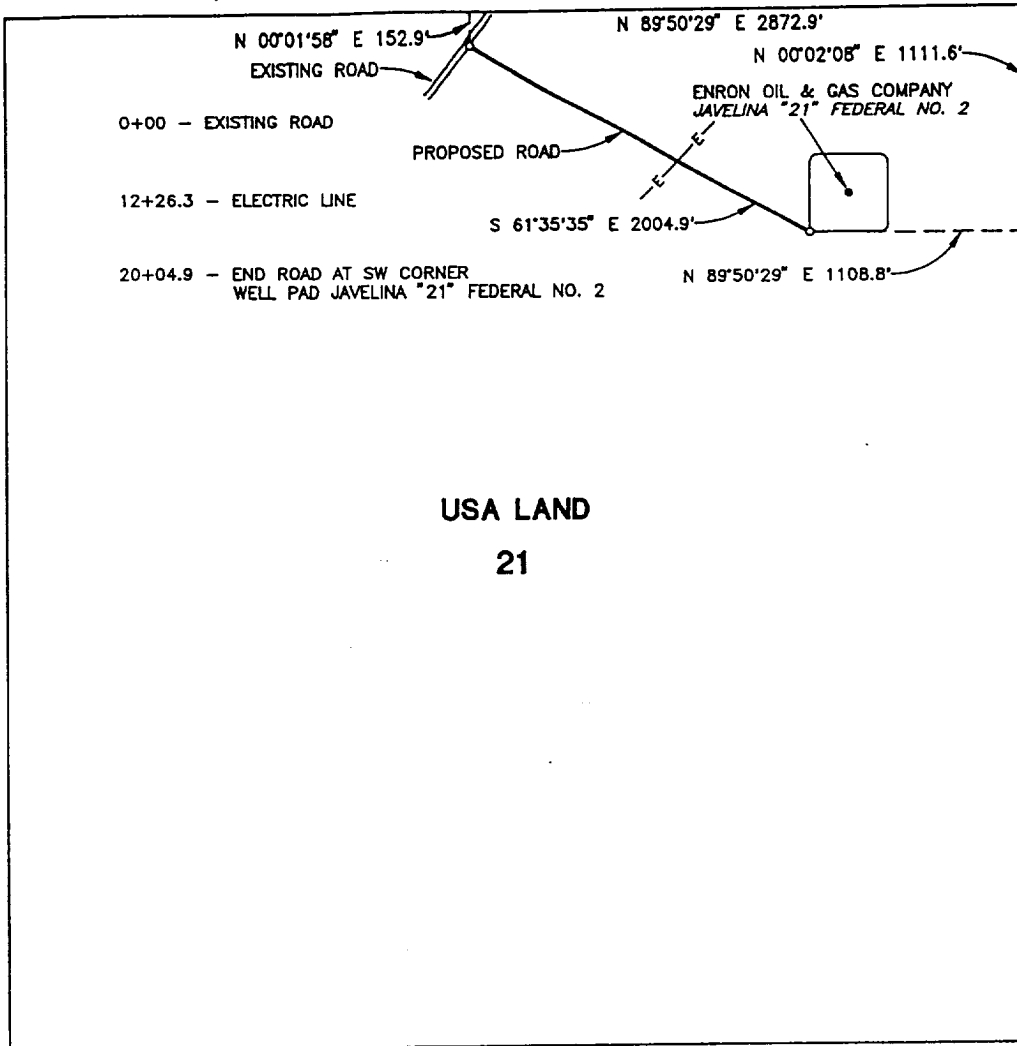
After completion of drilling and/or completion operations, all equipment and other material not needed for operations will be removed. Location will be cleaned of all trash and junk to leave the well in an aesthetically pleasing condition as possible.

Any unguarded pits containing fluid will be fenced until they are dry and back filled.

RECEIVED  
BUREAU OF LAND MANAGEMENT  
ROSWELL, NEW MEXICO

1997 OCT 10 A 4:47

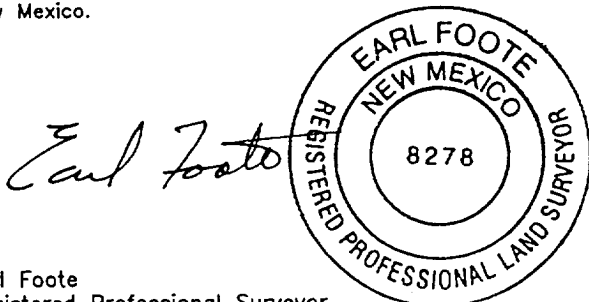
SECTION 21, TOWNSHIP 25 SOUTH, RANGE 34 EAST, N.M.P.M.  
LEA COUNTY, NEW MEXICO



CENTERLINE DESCRIPTION OF A PROPOSED ROAD:

BEGINNING at a point in an Existing Road, from which point the northeast corner of Section 21, T-25-S, R-34-E, N.M.P.M., Lea County, New Mexico, bears N 00° 01' 58" E, 152.9 feet and N 89° 50' 29" E, 2872.9 feet;  
THENCE S 61° 35' 35" E, 2004.9 feet to the southwest corner of a 400' x 400' Well Site for the end of this road, from which point the northeast corner of Section 21 bears N 89° 50' 29" E, 1108.8 and N 00° 02' 08" E, 1111.6 feet.

I hereby certify that this plat was prepared from an actual survey made on the ground and meets or exceeds all requirements for land surveys as specified by the state of New Mexico.



Earl Foote  
Registered Professional Surveyor  
New Mexico Certificate No. 8278

PROPOSED ROAD TO SERVE  
JAVELINA "21" FEDERAL NO. 2

ENRON OIL AND GAS COMPANY

2004.9 feet of proposed road in  
Section 21, T-25-S, R-34-E, N.M.P.M.,  
Lea County, New Mexico

WEST TEXAS CONSULTANTS, INC.

ENGINEERS-PLANNERS-SURVEYORS

MIDLAND, TEXAS

Survey Date: 8-19-97	Date: 8-20-97	Scale: 1" = 1000'
WTC No. 44985	Drawn By: R.S.	Sheet 1 of 1

RECEIVED  
BUREAU OF LINDSAY  
ROSWELL OFFICE

1997 OCT 10 A 4:47

RECEIVED

1997 OCT 10 A 4:47





RECEIVED  
1997 OCT 10 A 4:46  
CONCORD OF LAND RIGHTS  
ROSWELL OFFICE

RECEIVED  
1997 OCT 10 A 4:46  
CONCORD OF LAND RIGHTS  
ROSWELL OFFICE

After abandonment of the well, surface restoration will be in accordance with current Federal laws and regulations. Location will be cleaned, and the well pad removed to promote vegetation. Reseeding will be as per BLM specifications.

7. METHODS OF HANDLING WASTE DISPOSAL:

A small reserve pit will be utilized. Reserve pit will be evacuated of drilling fluid within 10 days after the well is completed.

Drill cuttings will be encapsulated in plastic and buried 2 feet below ground level.

Water produced during tests and waste water will be saved and hauled to a disposal well. Oil produced during tests will be in test tanks until sold.

Current laws and regulations pertaining to the disposal of human waste will be complied with.

Trash, waste paper, garbage and junk will be hauled to an approved disposal site in an enclosed trash trailer.

All trash and debris will be removed from the well site within 30 days after finishing drilling and/or completion operations.

8. ANCILLARY FACILITIES:

No airstrip, campsite, or other facilities will be built.

9. WELL SITE LAYOUT:

Exhibit #4 shows the relative location and dimensions of the well pad.

10. OTHER INFORMATION:

The area around the well site is grassland and the top soil is duned and sandy. The vegetation is native scrub grasses with abundant oakbrush, sagebrush, yucca, and prickly pear.

Received  
Hamp  
Oct

RECEIVED  
1977 OCT 10 A 4:46  
BUREAU OF LAND REVENUE  
ROSCOVILLE OFFICE

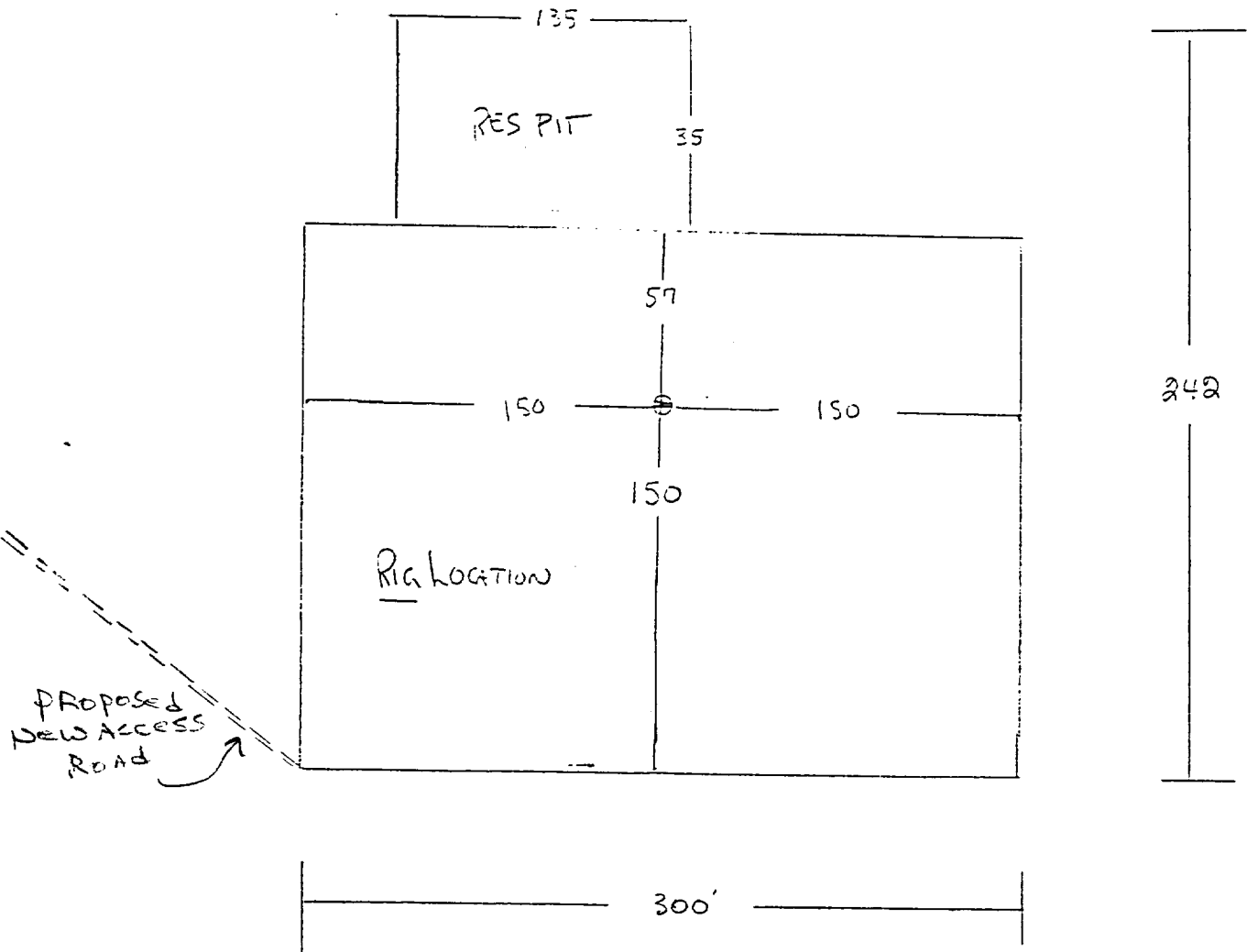
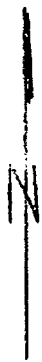


EXHIBIT #4

RECEIVED

1977 OCT 10 A 4 46

BUREAU OF LAND MANAGEMENT  
ROCKWELL OFFICE

10-10-77

JAVELINA 21 FEDERAL NO. 2

11. CERTIFICATION:

I hereby certify that I, or persons under my direct supervision, have inspected the proposed drill site and access route; that I am familiar with the conditions which presently exists; that the statements made in this plan are, to the best of my knowledge, true and correct; and that the work associated with the operations proposed herein will be performed by Enron Oil & Gas Company and its contractors and sub-contractors in conformity with this plan and the terms and conditions under which it is approved.



W. D. Smeltzer  
Drilling Manager

DATE: 10/8/97

4  
Received  
HARRIS  
1971

RECEIVED  
1971 OCT 10 A 4:46  
BUREAU OF LAND MANAGEMENT  
ROOSEVELT OFFICE