

State of New Mexico  
Energy, Minerals & Natural Resources Department

Form C-101  
Revised October 18, 1994  
Instructions on back  
Submit to Appropriate District Office  
State Lease - 6 Copies  
Fee Lease - 5 Copies

District I  
PO Box 1980, Hobbs, NM 88241-1980  
District II  
811 S. 1st Street, Artesia, NM 88210-2834  
District III  
1000 Rio Brazos Rd., Aztec, NM 87410  
District IV  
2040 South Pacheco, Santa Fe, NM 87505

OIL CONSERVATION DIVISION  
2040 South Pacheco  
Santa Fe, NM 87505

☐ AMENDED REPORT

APPLICATION FOR PERMIT TO DRILL, RE-ENTER, DEEPEN, PLUGBACK, OR ADD A ZONE

<sup>1</sup> Operator name and Address Enron Oil & Gas Company P.O. Box 2267 Midland, TX 79702		<sup>2</sup> OGRID Number 7377
<sup>4</sup> Property Code 24730	<sup>5</sup> Property Name Vaca Draw "16" State	<sup>3</sup> API Number 30-025-34653
		<sup>6</sup> Well No. 2

UL or lot no.	Section	Township	Range	Lot. Idn	Feet from the	North/South Line	Feet from the	East/West line	County
L	16	25S	33E		1,650	South	990	West	Lea

<sup>7</sup> Surface Location									
<sup>8</sup> Proposed Bottom Hole Location If Different From Surface									
UL or lot no.	Section	Township	Range	Lot. Idn	Feet from the	North/South Line	Feet from the	East/West line	County
<sup>9</sup> Proposed Pool 1 Draper Mill; Johnson Ranch Wolfcamp					<sup>10</sup> Proposed Pool 2 Pitchfork Ranch				

<sup>11</sup> Work Type Code N	<sup>12</sup> Well Type Code 8G	<sup>13</sup> Cable/Rotary R	<sup>14</sup> Lease Type Code S	<sup>15</sup> Ground Level Elevation 3.417
<sup>16</sup> Multiple N	<sup>17</sup> Proposed Depth 14,000	<sup>18</sup> Formation Wolfcamp	<sup>19</sup> Contractor	<sup>20</sup> Spud Date 7/10/99

<sup>21</sup> Proposed Casing and Cement Program

Hole Size	Casing Size	Casing weight/foot	Setting Depth	Sacks of Cement	Estimated TOC
14-3/4"	11-3/4 H40	ST&C 42#	550	350 CL C	Surface
11"	8-5/8 J55	LT&C 32#	4000		
11"	8-5/8 HCK	LT&C 32#	5000	1050 C Prem +	Surface
7-7/8"	5-1/2 S95/P110	LT&C 17#	12800	1180 Prem	4500'
4-3/4"	2-7/8" N80	6 5#	14000	135 Prem	12300'

<sup>22</sup> Describe the proposed program. If this application is to DEEPEN or PLUG BACK give the data on the present productive zone and proposed new productive zone. Describe the blowout prevention program, if any. Use additional sheets if necessary

11-3/4" - 200 sx Prem Plus, 3% Econolite, 2% Calcium Chloride, 0.25#/sx Flocele  
150 sx Prem Plus, 2% Calcium Chloride  
8-5/8" - 800 sx Interfill C, .25#/sx Flocele  
250 sx Premium Plus, 2% Calcium Chloride  
5-1/2" - 930 sx Premium, 3% Econolite, 5#/sx Salt (3%), .25#/sx Flocele  
250 sx Prem 50/50 Poz mix "A", 2% Halliburton-Gel First 2%, 0.5% Halad-322, 0.2% HR-5  
2-7/8" - 135 sx Premium Cement, 0.3% Halad-344, 0.3% Halad-413, 0.3% Super CBL, 0.3% SCR-100  
BOP Diagram Attached.

<sup>23</sup> I hereby certify that the information given above is true and complete to the best of my knowledge and belief.

Signature: Mike Francis

Printed name: Mike Francis Phone: 915/686-3714

Title: Agent Date: 7/1/99

OIL CONSERVATION DIVISION  
ORIGINAL SIGNED BY

Approved by: GARY WINK  
FIELD REP. II

Title:

Approval Date: JUL 07 1999 Expiration Date:

Permit Expires 1 Year From Approval  
Date Unless Drilling Underway

CHP

District I  
PO Box 1980, Hobbs, NM 88241-1980  
District II  
PO Drawer DD, Artesia, NM 88211-0719  
District III  
1000 Rio Brazos Rd., Aztec, NM 87410  
District IV  
PO Box 2088, Santa Fe, NM 87504-2088

State of New Mexico  
Energy, Minerals & Natural Resources Department

OIL CONSERVATION DIVISION  
PO Box 2088  
Santa Fe, NM 87504-2088

Form C-102  
Revised February 21, 1994  
Instructions on back  
Submit to Appropriate District Office  
State Lease - 4 Copies  
Fee Lease - 3 Copies

☐ AMENDED REPORT

WELL LOCATION AND ACREAGE DEDICATION PLAT

*API Number 30-025-34653		*Pool Code 79335-76115	*Pool Name Drapeer Mill; Johnson Ranch Wolfcamp
*Property Code 24730	*Property Name VACA DRAW "16" STATE		*Well Number 2
*OGRID No. 7377	*Operator Name ENRON OIL & GAS COMPANY		*Elevation 3417

<sup>10</sup> Surface Location

UL or lot no.	Section	Township	Range	Lot Idn	Feet from the	North/South line	Feet from the	East/West line	County
L	16	25-S	33-E		1650	SOUTH	990	WEST	LEA

<sup>11</sup> Bottom Hole Location If Different From Surface

UL or lot no.	Section	Township	Range	Lot Idn	Feet from the	North/South line	Feet from the	East/West line	County

<sup>12</sup> Dedicated Acres	<sup>13</sup> Joint or Infill	<sup>14</sup> Consolidation Code	<sup>15</sup> Order No.
320			

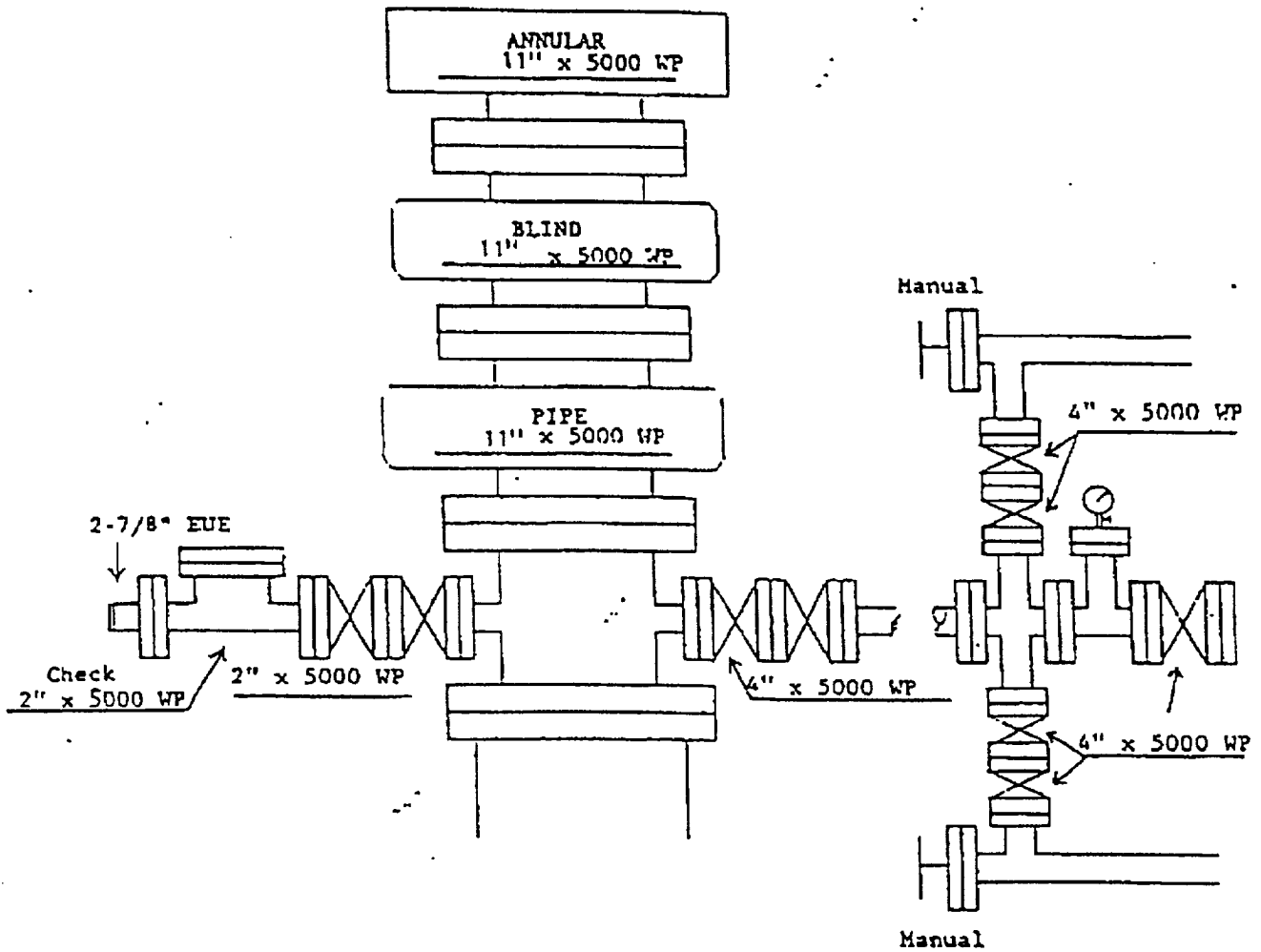
NO ALLOWABLE WILL BE ASSIGNED TO THIS COMPLETION UNTIL ALL INTERESTS HAVE BEEN CONSOLIDATED  
OR A NON-STANDARD UNIT HAS BEEN APPROVED BY THE DIVISION

	<p>ENRON OIL &amp; GAS COMPANY VACA DRAW "16" STATE No. 2 LAT. = 32°07'42.3" LONG. = 103°42'56.1" Y = 411003.825 X = 732562.502</p>	<p><sup>17</sup> OPERATOR CERTIFICATION</p> <p>I hereby certify that the information contained herein is true and complete to the best of my knowledge and belief.</p> <p><i>Mike Francis</i> Signature Mike Francis Printed Name Agent Title 7/1/99 Date</p>
		<p><sup>18</sup> SURVEYOR CERTIFICATION</p> <p>I hereby certify that the well location shown on this plat was plotted from field notes of actual surveys made by me or under my supervision, and that the same is true and correct to best of my belief.</p> <p>JUNE 21, 1999 Date of Survey Signature and Seal of Professional Surveyor <i>David M. Young</i> DAVID M. YOUNG NEW MEXICO REGISTERED PROFESSIONAL SURVEYOR 14274 Certificate Number 14274</p>

ENRON OIL & GAS COMPANY

Vaca Draw "16" State No. 2

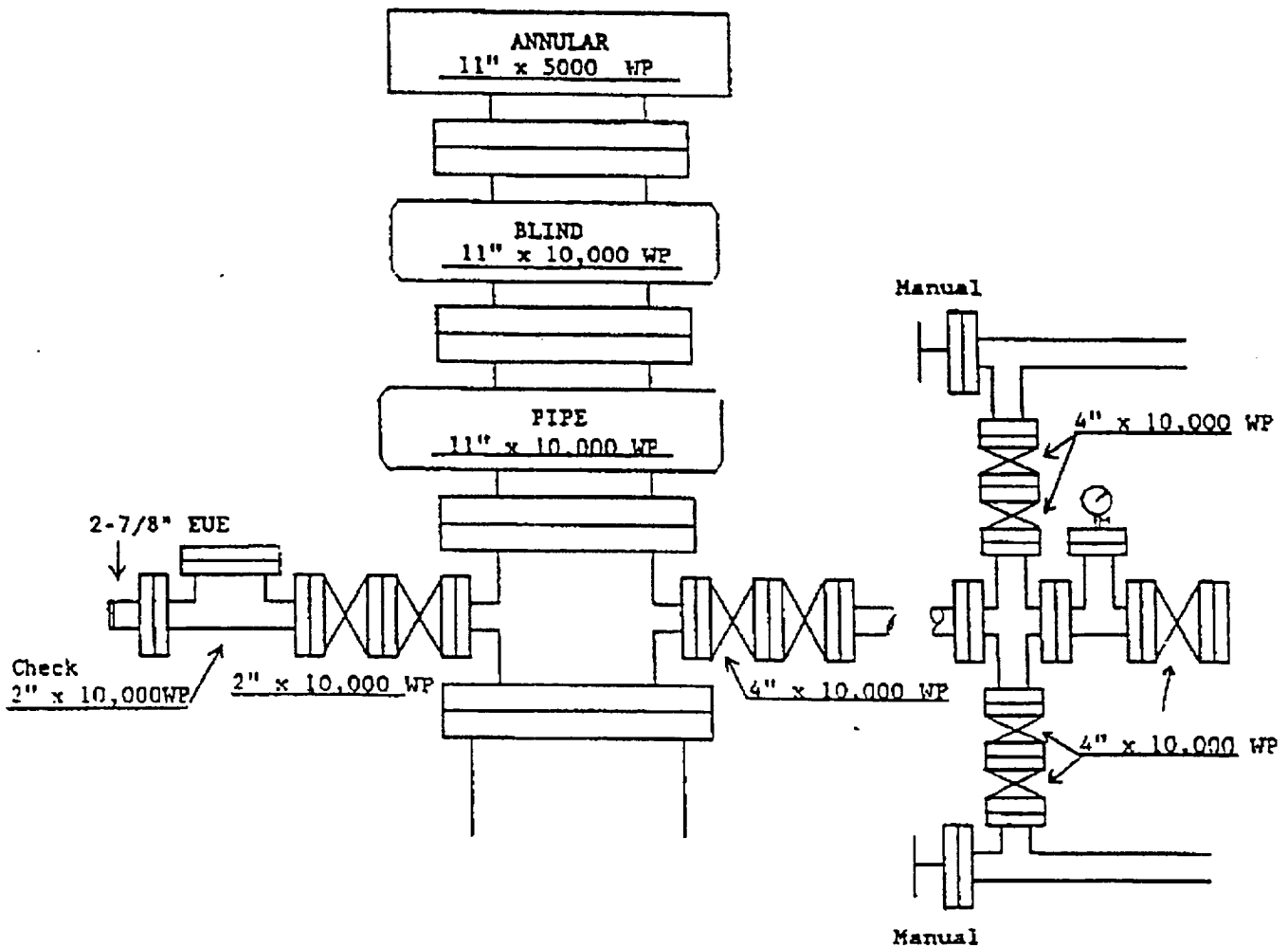
Attachment I



Nipple up this equipment at +/-650' and use until +/-12,800'

ENRON OIL & GAS COMPANY  
Vaca Draw "16" State No. 2

Attachment II



Nipple up this equipment at +/-12,800' and use until TD

ELF  
11/15/2011  
ABOVE DATE DOES NOT  
INDICATE WHEN  
CONFIDENTIAL LOGS  
WILL BE RELEASED