

DISTRICT I

P. O. Box 1980
Hobbs, NM 88241-1980

DISTRICT II

P. O. Drawer DD
Artesia, NM 88211-0719

DISTRICT III

1000 Rio Brazos Rd.
Aztec, NM 87410

DISTRICT IV

P. O. Box 2088
Santa Fe, NM 87507-2088

State of New Mexico
Energy, Minerals, and Natural Resources Department

Form C-
Revised 02-10

Instructions on t

Submit to the Approp
District Office
State Lease - 4 copie
Fee Lease - 3 copies

OIL CONSERVATION DIVISION

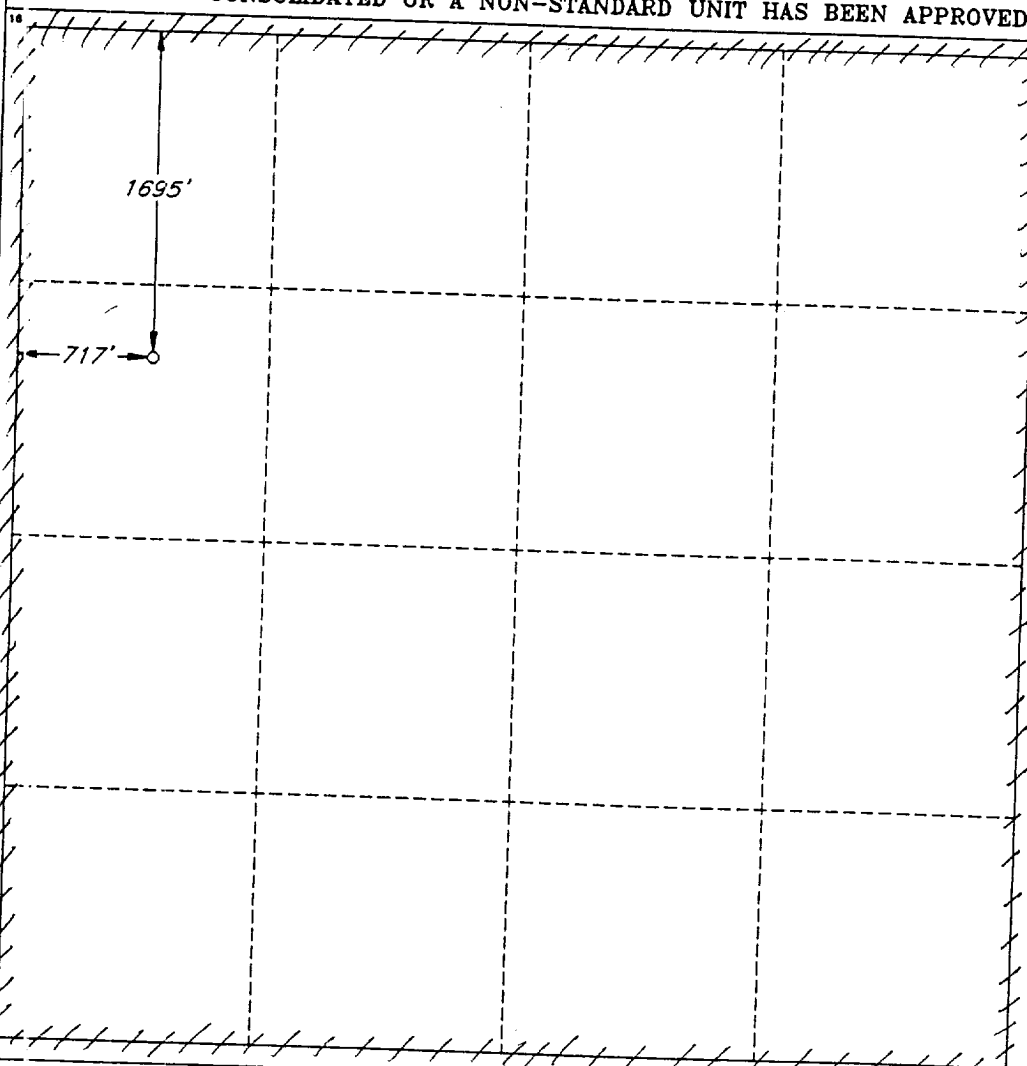
P. O. Box 2088
Santa Fe, New Mexico 87504-2088

☐ AMENDED REPORT

WELL LOCATION AND ACREAGE DEDICATION PLAT

1 API Number 30-025-35112		2 Pool Code 83600		3 Pool Name Red Hills; Wolfcamp (Gas)					
4 Property Code 022445		5 Property Name RED HILLS UNIT						6 Well Number 5	
7 OGRID No. 014245		8 Operator Name MATADOR OPERATING COMPANY						9 Elevation 3370'	
10 SURFACE LOCATION									
11 L or lot no. E	12 Section 33	13 Township 25 SOUTH	14 Range 33 EAST, N.M.P.M.	15 Lot Ida	16 Feet from the 1695'	17 North/South line NORTH	18 Feet from the 717'	19 East/West line WEST	20 County LEA
21 BOTTOM HOLE LOCATION IF DIFFERENT FROM SURFACE									
22 L or lot no.	23 Section	24 Township	25 Range	26 Lot Ida	27 Feet from the	28 North/South line	29 Feet from the	30 East/West line	31 County
32 Dedicated Acres 640		33 Joint or Infill		34 Consolidation Code		35 Order No. R3073-A			

NO ALLOWABLE WELL BE ASSIGNED TO THIS COMPLETION UNTIL ALL INTERESTS HAVE BEEN
CONSOLIDATED OR A NON-STANDARD UNIT HAS BEEN APPROVED BY THE DIVISION

**OPERATOR CERTIFICATION**

I hereby certify that the information
contained herein is true and complete
to the best of my knowledge and belief.

Signature

Russ Mathis

Printed Name

Russ Mathis

Title

Production Manager

Date

4-26-01

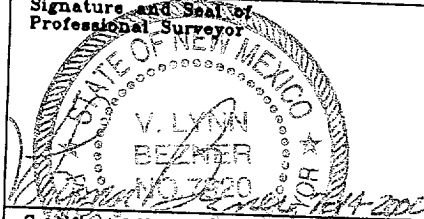
SURVEYOR CERTIFICATION

I hereby certify that the well
location shown on this plat was
plotted from field notes of actual
surveys made by me or under
my supervision, and that the
same is true and correct to the
best of my belief.

Date of Survey

JULY 11, 2000

Signature and Seal of
Professional Surveyor



Certificate No.

V. L. BEZNER

R.P.S. #7920

JOB #70351 / 22 SE / J.C.P.