

District I
PO Box 1980, Hobbs, NM 88241-1980
District II
811 South First, Artesia, NM 88210
District III
1000 Rio Brazos Rd., Aztec, NM 87410
District IV
2040 South Pacheco, Santa Fe, NM 87505

State of New Mexico
Energy, Minerals & Natural Resources Department

OIL CONSERVATION DIVISION
2040 South Pacheco
Santa Fe, NM 87505

Form C-101
Revised October 18, 1994

Instructions on back
Submit to Appropriate District Office
State Lease - 6 Copies
Fee Lease - 5 Copies
☐ AMENDED REPORT

APPLICATION FOR PERMIT TO DRILL, RE-ENTER, DEEPEN, PLUGBACK, OR ADD A ZONE

¹ Operator Name and Address SAGA PETROLEUM LLC 415 W WALL, SUITE 1900 MIDLAND TX 79701		² OGRID Number 148967 ³ API Number 30-025-35113
⁴ Property Code 023674	⁵ Property Name WEST DOLLARHIDE QUEEN UNIT	
		⁶ Well No. 156

⁷ Surface Location							Approval Date:		
UL or lot no. L	Section 32	Township 24S	Range 38E	Lot Idn	Feet from the 1500	North/South line SOUTH	Feet from the 915	East/West line WEST	County LEA

⁸ Proposed Bottom Hole Location If Different From Surface									
UL or lot no.	Section	Township	Range	Lot Idn	Feet from the	North/South line	Feet from the	East/West line	County
⁹ Proposed Pool 1 DOLLARHIDE QUEEN					¹⁰ Proposed Pool 2				

¹¹ Work Type Code Drill <i>N</i>	¹² Well Type Code Oil	¹³ Cable/Rotary ROTARY	¹⁴ Lease Type Code STATE	¹⁵ Ground Level Elevation 3145'
¹⁶ Multiple	¹⁷ Proposed Depth 3950'	¹⁸ Formation Grayburg Queen	¹⁹ Contractor	²⁰ Spud Date

²¹ Proposed Casing and Cement Program					
Hole Size	Casing Size	Casing weight/foot	Setting Depth	Sacks of Cement	Estimated TOC
12-1/4"	8-5/8"	24#	415'	250 Prem+	circ-surface
7-7/8"	5-1/2"	14#	3950'	600 Prem+	Circ-surface

²² Describe the proposed program. If this application is to DEEPEN or PLUG BACK give the data on the present productive zone and proposed new productive zone. Describe the blowout prevention program, if any. Use additional sheets if necessary.

Drill surface hole w/FW mud 8.4-8.8 ppg and 34-36 vis to 415' Run 8-5/8" csg, cmt. WOC 8 hrs. Cut off 8-5/8", install 2000 psi SOW WH & NU 3000 psi double Ram BOP & rotating head, prior to drl out surf csg shoe, press test csg to 1000 psi for 15 mins. Drl 7-7/8" hole w/native brine wtr to 3500', mud up w/SW gel to vis 35-40, MW 9.5-10 ppg & WL 10-15ccs. At top Qn sd @ 3590', POOH & PU 60' core bbl & GIH & core upper 5 Qn sds, ream core hole out to 7-7/8" & drl to TD 3950', log & run 5-1/2" csg. Cmt 1 stage w/600 sx Prem Plus w/gel & FLA. Circ cmt to surface, displace plug w/2% KCL FW. Non-standard location due to pipelines & power lines.

²³ I hereby certify that the information given above is true and complete to the best of my knowledge and belief. Signature: <i>Bonnie Husband</i>		Saga is their own offset operator. OIL CONSERVATION DIVISION	
Printed name: Bonnie Husband		Approved by:	
Title: Production Analyst		Title:	
Date: 08/03/2000	Phone: (915)684-4293	Expiration Date:	
		Conditions of Approval: Attached <input type="checkbox"/>	

Permit Expires 1 Year From Approval
Date Unless Drilling Underway

DISTRICT I
P.O. Box 1980, Hobbs, NM 88241-1980

State of New Mexico
Energy, Minerals and Natural Resources Department

Form C-102
Revised February 10, 1994
Submit to Appropriate District Office
State Lease - 4 Copies
Fee Lease - 3 Copies

DISTRICT II
P.O. Drawer DD, Artesia, NM 88211-0719

DISTRICT III
1000 Rio Brazos Rd., Aztec, NM 87410

OIL CONSERVATION DIVISION

P.O. Box 2088
Santa Fe, New Mexico 87504-2088

DISTRICT IV
P.O. BOX 2088, SANTA FE, N.M. 87504-2088

☐ AMENDED REPORT

WELL LOCATION AND ACREAGE DEDICATION PLAT

API Number 30-025-3 S113	Pool Code 18810	Pool Name Dollarhide Queen
Property Code 023674	Property Name WEST DOLLARHIDE QUEEN UNIT	Well Number 156
OGRID No. 148967	Operator Name SAGA PETROLEUM LLC	Elevation 3145

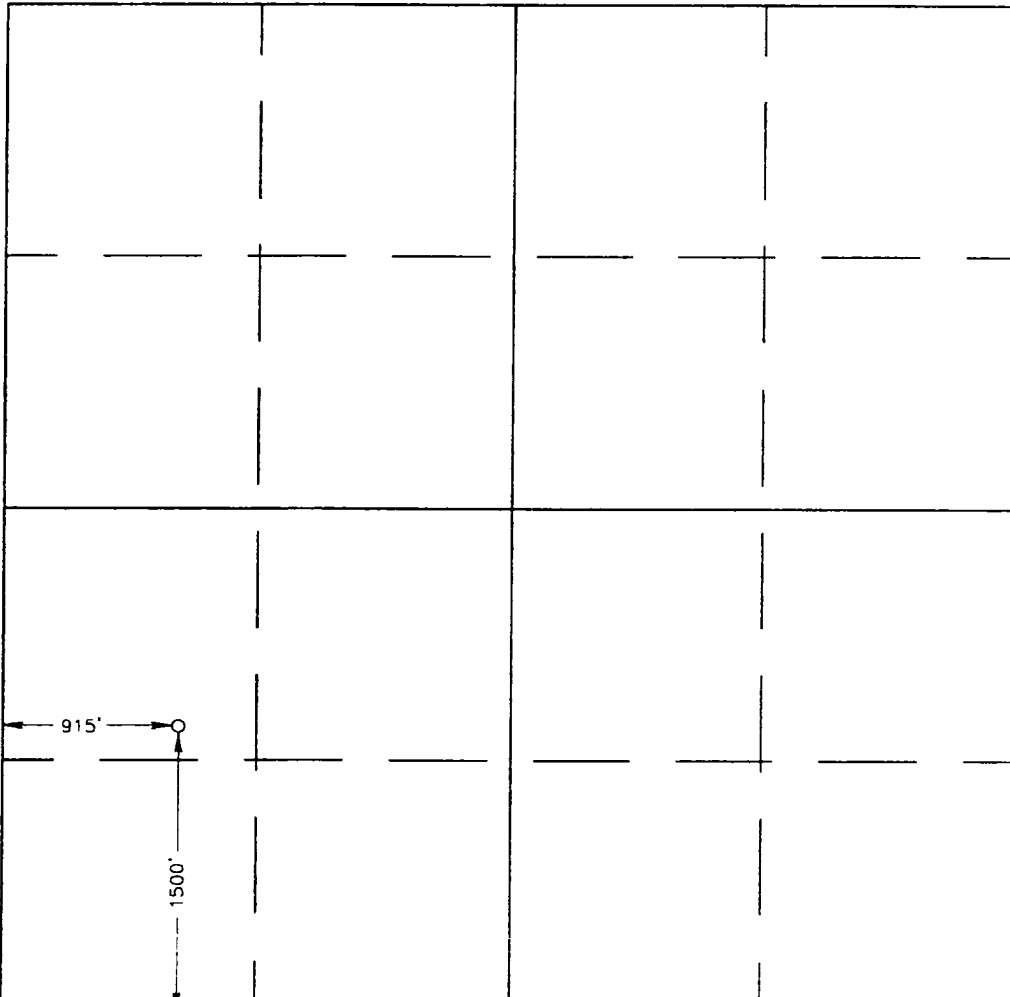
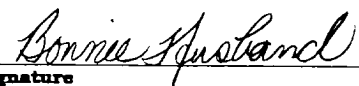
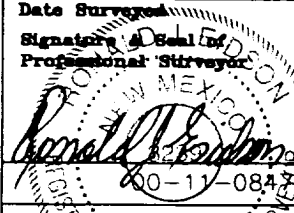
Surface Location

UL or lot No. L	Section 32	Township 24 S	Range 38 E	Lot Idn	Feet from the 1500	North/South line SOUTH	Feet from the 915	East/West line WEST	County LEA
--------------------	---------------	------------------	---------------	---------	-----------------------	---------------------------	----------------------	------------------------	---------------

Bottom Hole Location If Different From Surface

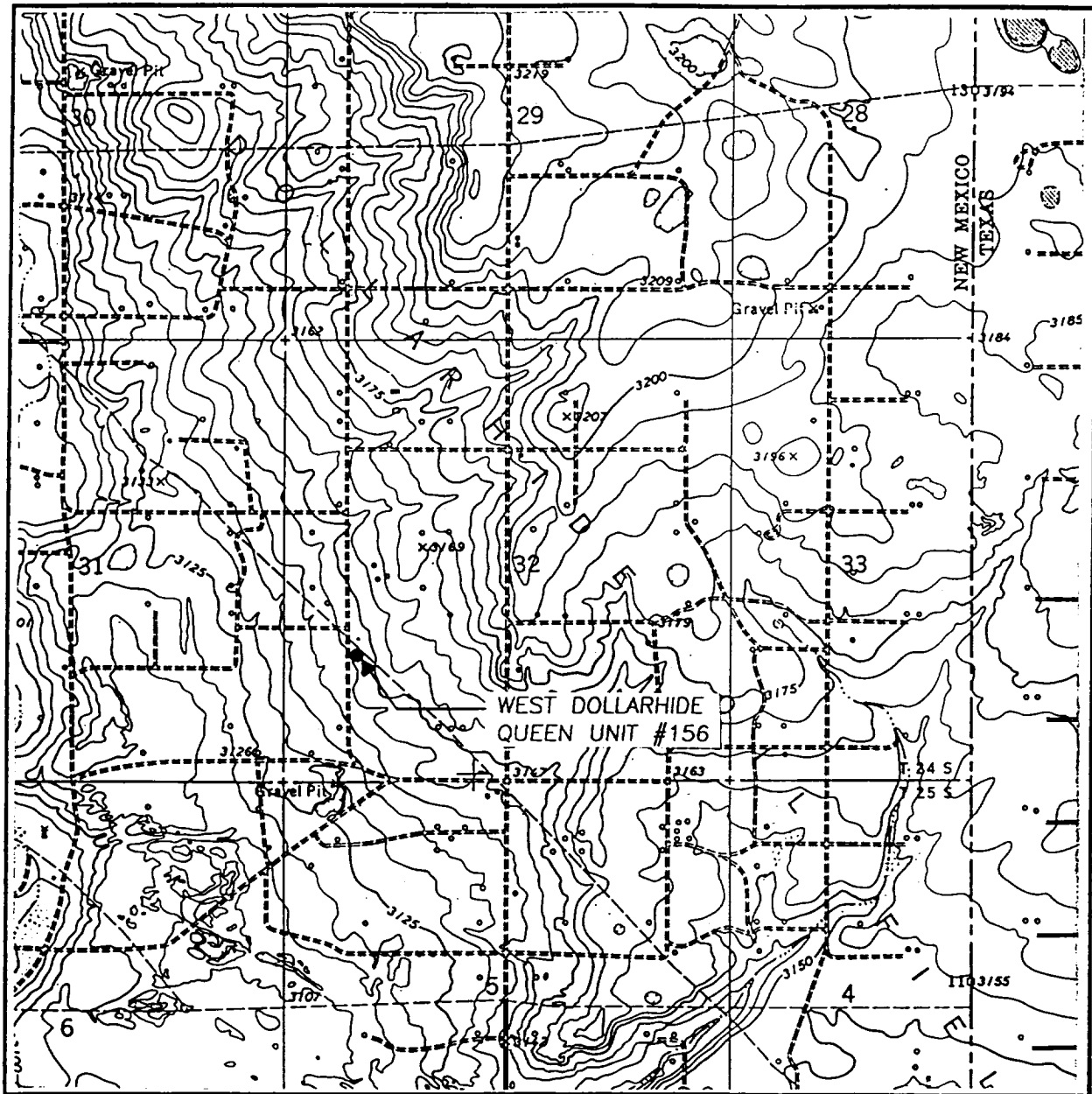
UL or lot No.	Section	Township	Range	Lot Idn	Feet from the	North/South line	Feet from the	East/West line	County
Dedicated Acres 40	Joint or Infill	Consolidation Code	Order No.						

NO ALLOWABLE WILL BE ASSIGNED TO THIS COMPLETION UNTIL ALL INTERESTS HAVE BEEN CONSOLIDATED
OR A NON-STANDARD UNIT HAS BEEN APPROVED BY THE DIVISION

	OPERATOR CERTIFICATION I hereby certify the the information contained herein is true and complete to the best of my knowledge and belief.  Signature Bonnie Husband Printed Name Production Analyst Title Aug 3, 2000 Date
	SURVEYOR CERTIFICATION I hereby certify that the well location shown on this plat was plotted from field notes of actual surveys made by me or under my supervision, and that the same is true and correct to the best of my belief. JULY 13, 2000 Date Surveyed Signature & Seal of Professional Surveyor  Certificate No. RONALD E. EDSON 3239 GARY EDSON 12641 W. DONALD 12185

JOHN WEST SURVEYING
HOBBS, NEW MEXICO
(505 393-3117

LOCATION VERIFICATION MAP



SCALE: 1" = 2000'

CONTOUR INTERVAL:
JAL NE - 5'

SEC. 32 TWP. 24-S RGE. 38-E

SURVEY N.M.P.M.

COUNTY LEA

DESCRIPTION 1500' FSL & 915' FWL

ELEVATION 3145

OPERATOR SAGA PETROLEUM LLC

LEASE WEST DOLLARHIDE QUEEN UNIT

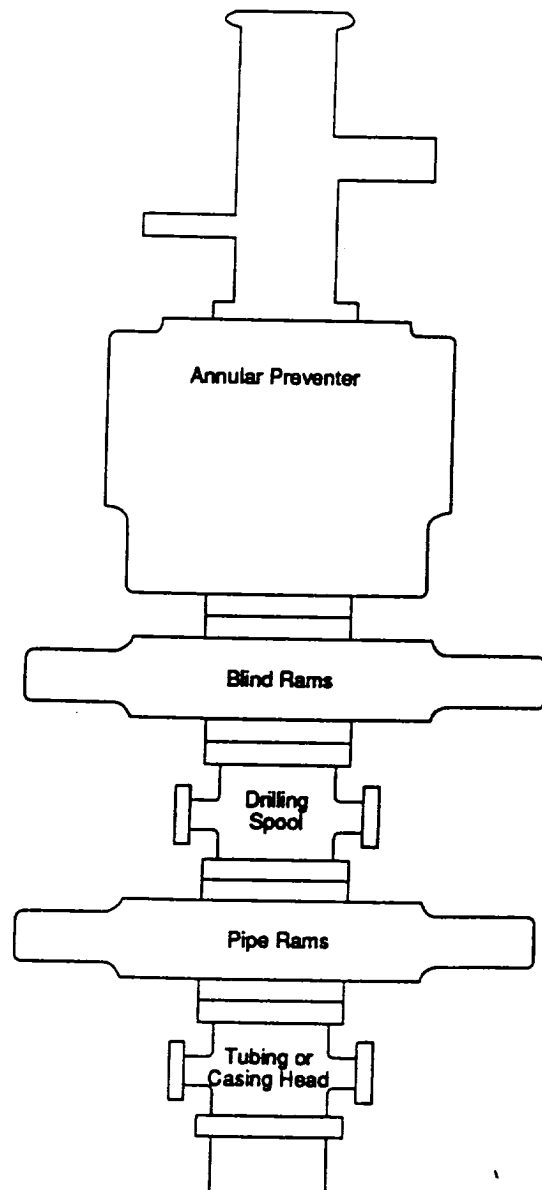
U.S.G.S. TOPOGRAPHIC MAP

JAL NE, N.M.

JOHN WEST SURVEYING
HOBBS, NEW MEXICO
(505 393-3117)

The Class III preventer stack is designed for drilling or workover operations. It is composed of a single hydraulically operated annular preventer on top, then a blind ram preventer, a drilling spool, and a single pipe ram preventer on bottom. The choke and kill lines are installed onto the drilling spool and must have a minimum internal diameter of 2". All side outlets on the preventers or drilling spool must be flanged, studded, or clamped. An emergency kill line may be installed on the wellhead. A double ram preventer should only be used when space limitations make it necessary to remove the drilling spool. In these instances, the choke manifold should be connected to a flanged outlet between the preventer rams only. In this hookup, the pipe rams are considered master rams only, and cannot be used to routinely circulate out a kick. The Class III blowout preventer stack is shown to the right in Figure 11J.4.

Figure 11J.4
Class III Blowout Preventer Stack



ABOVE DATE DOES NOT
INDICATE WHEN
CONFIDENTIAL LOGS
WILL BE RELEASED

ELF

12/6/00