

DISTRICT I
P.O. Box 1980, Hobbs, NM 88241-1980

DISTRICT II
P.O. Drawer DD, Artesia, NM 88211-0719

DISTRICT III
1000 Rio Brazos Rd., Aztec, NM 87410

DISTRICT IV
P.O. BOX 2068, SANTA FE, N.M. 87504-2068

State of New Mexico
Energy, Minerals and Natural Resources Department

Form C-102
Revised February 10, 1994
Submit to Appropriate District Office
State Lease - 4 Copies
Fee Lease - 3 Copies

OIL CONSERVATION DIVISION

P.O. Box 2088
Santa Fe, New Mexico 87504-2088

☐ AMENDED REPORT

WELL LOCATION AND ACREAGE DEDICATION PLAT

API Number 30-025-35139	Pool Code 33820	Pool Name Jalmat T-4-Y-5-7R
Property Code 2656825593	Property Name JACK B 30	Well Number 3
GRID No. 64646473	Operator Name DOYLE HARTMAN OIL OPERATOR	Elevation 3278

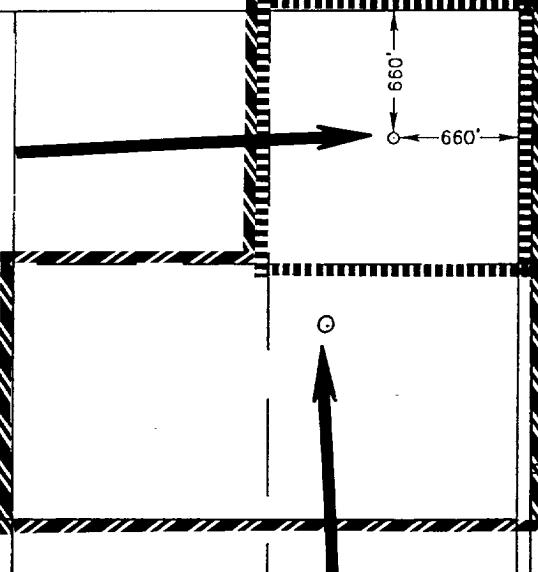
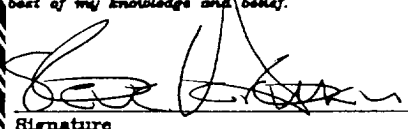
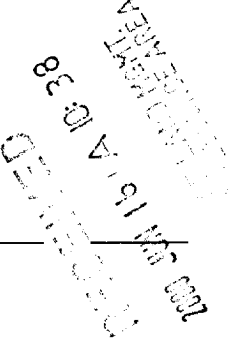
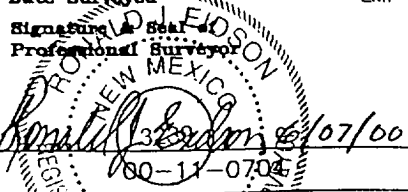
Surface Location

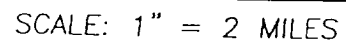
UL or lot No. A	Section 30	Township 24 S	Range 37 E	Lot Idn	Feet from the 660	North/South line NORTH	Feet from the 660	East/West line EAST	County LEA
--------------------	---------------	------------------	---------------	---------	----------------------	---------------------------	----------------------	------------------------	---------------

Bottom Hole Location If Different From Surface

UL or lot No.	Section	Township	Range	Lot Idn	Feet from the	North/South line	Feet from the	East/West line	County
Dedicated Acres 40	Joint or Infill N	Consolidation Code	Order No. R-5658-A						

NO ALLOWABLE WILL BE ASSIGNED TO THIS COMPLETION UNTIL ALL INTERESTS HAVE BEEN CONSOLIDATED
OR A NON-STANDARD UNIT HAS BEEN APPROVED BY THE DIVISION

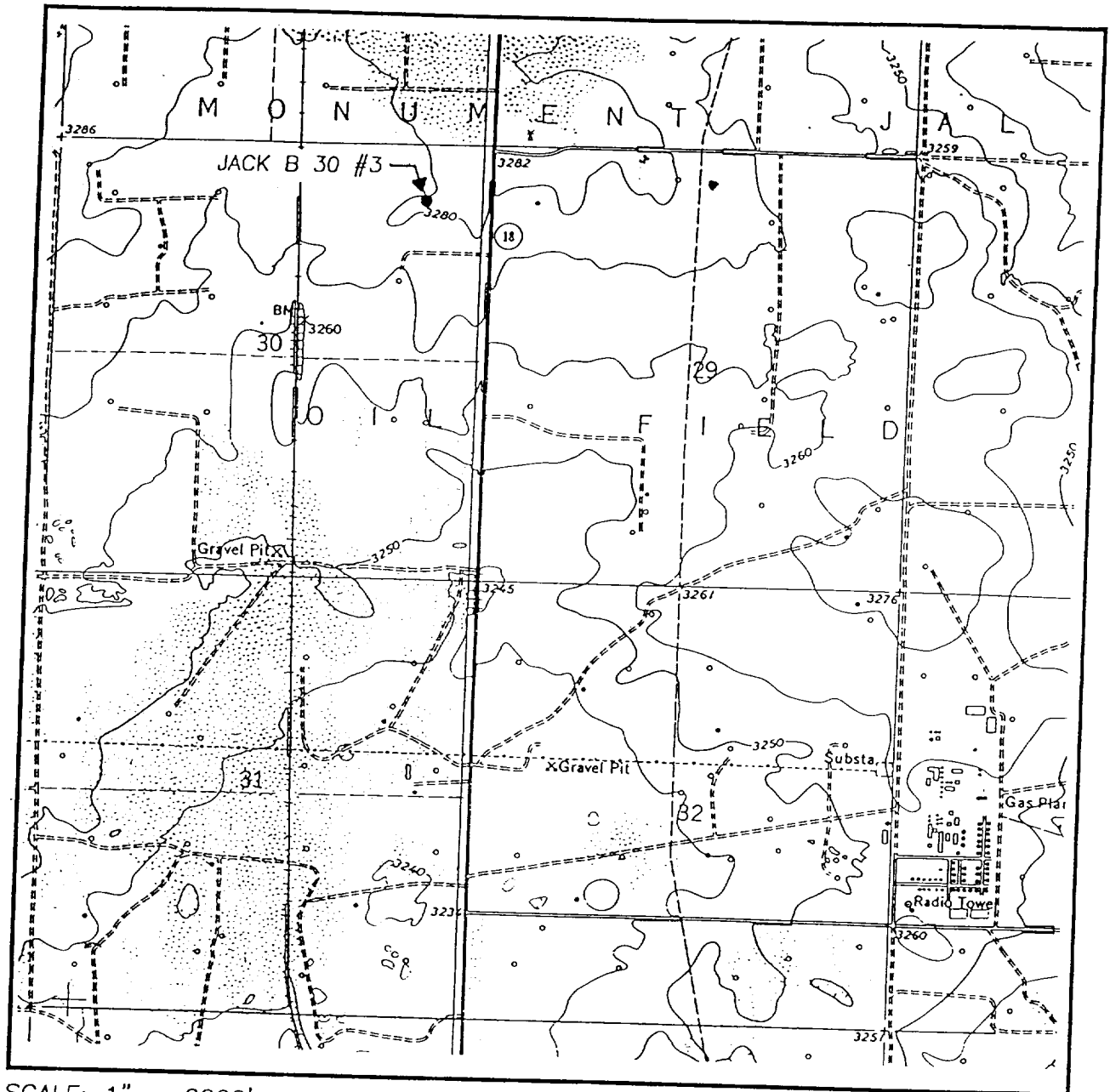
Proposed Jalmat Oil Well Jack B-30 No. 3 6600'FNL & 660' FEL Sec. 30, T-24-S,R-37-E		OPERATOR CERTIFICATION I hereby certify the the information contained herein is true and complete to the best of my knowledge and belief.  Signature Steve Hartman Printed Name Engineer Title 6/15/00 Date
	Existing Jalmat Oil Producer Jack B-30 No. 1 1650'FNL & 990' FEL Sec. 30, T-24-S,R-37-E	SURVEYOR CERTIFICATION I hereby certify that the well location shown on this plat was plotted from field notes of actual surveys made by me or under my supervision and that the same is true and correct to the best of my belief. JUNE 5, 2000 Date Surveyed Signature of Surveyor Professional Surveyor  Certified No. RONALD Q. EDSON 3239 CARY EDSON 12641 RONALD Q. EDSON 12185



SEC. 30 TWP. 24-S RGE. 37-E
SURVEY _____ N.M.P.M. _____
COUNTY _____ LEA _____
DESCRIPTION 660' FNL & 660' FEL
ELEVATION _____ 3278 _____
OPERATOR _____ DOYLE HARTMAN
LEASE _____ OIL OPERATOR _____
LEASE _____ JACK B 30 _____

JOHN WEST SURVEYING
HOBBS, NEW MEXICO
(505) 393-3117

LOCATION VERIFICATION MAP



SCALE: 1" = 2000'

CONTOUR INTERVAL:
JAL NW, N.M. - 10'

SEC. 30 TWP. 24-S RGE. 37-E

SURVEY N.M.P.M.

COUNTY LEA

DESCRIPTION 660' FNL & 660' FEL

ELEVATION 3278

OPERATOR DOYLE HARTMAN
OIL OPERATOR

LEASE JACK B 30

U.S.G.S. TOPOGRAPHIC MAP

JAL NW, N.M.

JOHN WEST SURVEYING
HOBBS, NEW MEXICO
(505) 393-3117