

DISTRICT I
P. O. Box 1980, Hobbs, NM 88240

DISTRICT II
P. O. Drawer DD, Artesia, NM 88210

DISTRICT III
1000 Rio Brazos Rd., Aztec, NM 87410

DISTRICT IV
P. O. Box 2088, Santa Fe, NM 87504-2088

State of New Mexico
Energy, Minerals and Natural Resources Department

Form C-102
Revised February 10, 1994

Instructions on back

OIL CONSERVATION DIVISION

PO Box 2088
Santa Fe, NM 87504-2088

Submit to Appropriate District Office

State Lease-4 copies
Fee Lease-3 copies

☐ AMENDED REPORT

WELL LOCATION AND ACREAGE DEDICATION PLAT

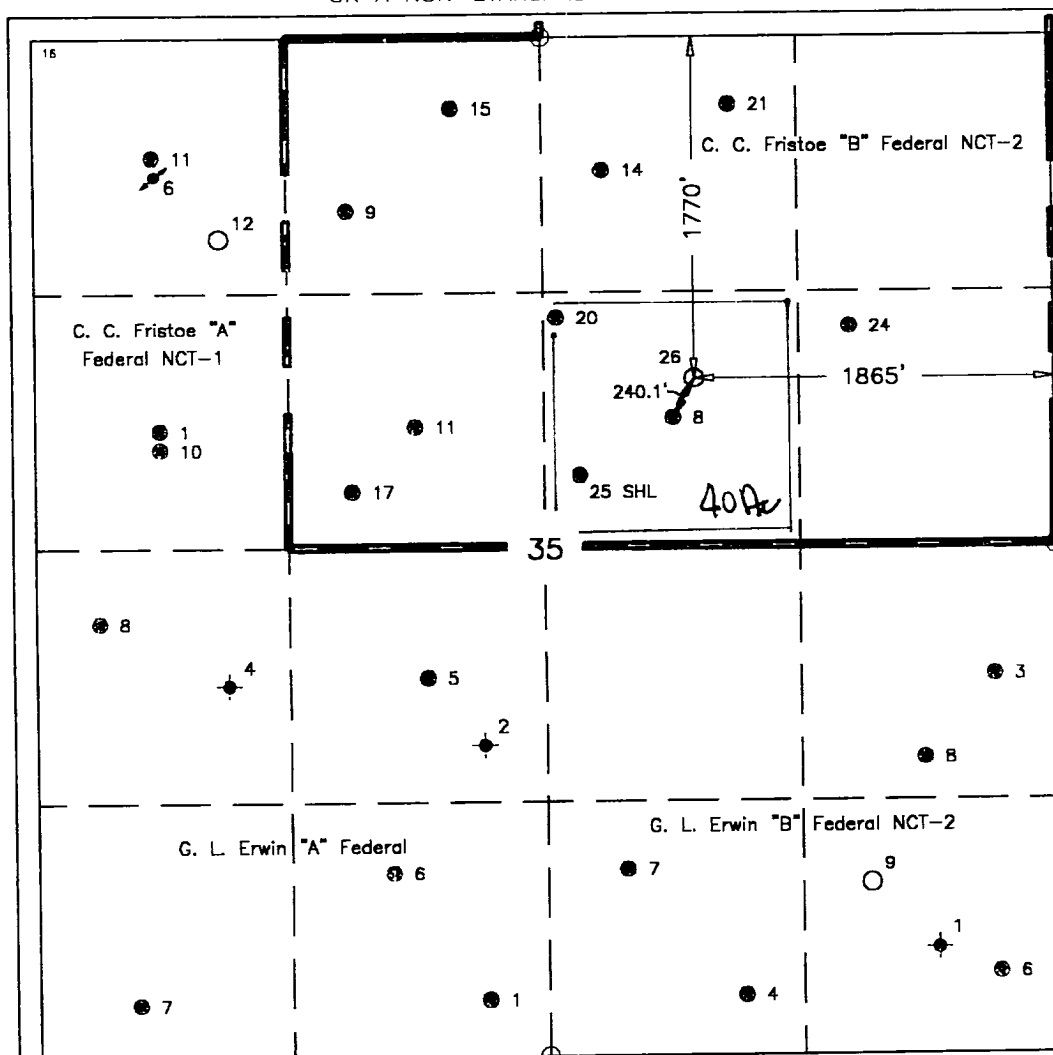
¹ API Number 30-025-35239		² Pool Code 34200/35280		³ Pool Name Justis Blinebry & Justis Tubb Drinkard	
⁴ Property Code 10944		⁵ Property Name C. C. Fristoe "B" Federal NCT-2			
⁷ GRID No. 22351		⁸ Operator Name TEXACO EXPLORATION & PRODUCTION, INC.			
				⁶ Well Number 26	
				⁹ Elevation 3172'	

¹⁰ Surface Location									
UL or lot no. G	Section 35	Township 24-S	Range 37-E	Lot Idn	Feet from the 1770'	North/South line North	Feet from the 1865'	East/West line East	⁷ County Lea

¹¹ Bottom Hole Location If Different From Surface									
UL or lot no.	Section	Township	Range	Lot Idn	Feet from the	North/South line	Feet from the	East/West line	⁷ County

¹² Dedicated Acres 40	¹³ Joint or Infill	¹⁴ Consolidation Code	¹⁵ Order No.
-------------------------------------	-------------------------------	----------------------------------	-------------------------

NO ALLOWABLE WILL BE ASSIGNED TO THIS COMPLETION UNTIL ALL INTERESTS HAVE BEEN CONSOLIDATED
OR A NON-STANDARD UNIT HAS BEEN APPROVED BY THE DIVISION.



¹⁷ OPERATOR CERTIFICATION	
I hereby certify that the information contained herein is true and complete to the best of my knowledge and belief.	
Signature	<i>A. Phil Ryan</i>
Printed Name	A. Phil Ryan
Position	Commissioner Coordinator
Company	Texaco Expl. & Prod. Inc.
Date	September 11, 2000
¹⁸ SURVEYOR CERTIFICATION	
I hereby certify that the well location shown on this plat was plotted from field notes of actual surveys made by me or under my supervision, and that the same is true and correct to the best of my knowledge and belief.	
Date Surveyed	August 29, 2000
Signature & Seal of Professional Surveyor	<i>John S. Piper</i>
Certificate No.	7254 John S. Piper
Sheet	