

DISTRICT I
P. O. Box 1980, Hobbs, NM 88240

DISTRICT II
P. O. Drawer DD, Artesia, NM 88210

DISTRICT III
1000 Rio Brazos Rd., Aztec, NM 87410

DISTRICT IV
P. O. Box 2088, Santa Fe, NM 87504-2088

State of New Mexico
Energy, Minerals and Natural Resources Department

Form C-102
Revised February 10, 1994

Instructions on back

OIL CONSERVATION DIVISION
PO Box 2088
Santa Fe, NM 87504-2088

Submit to Appropriate District Office

State Lease-4 copies
Fee Lease-3 copies

AMENDED REPORT

WELL LOCATION AND ACREAGE DEDICATION PLAT

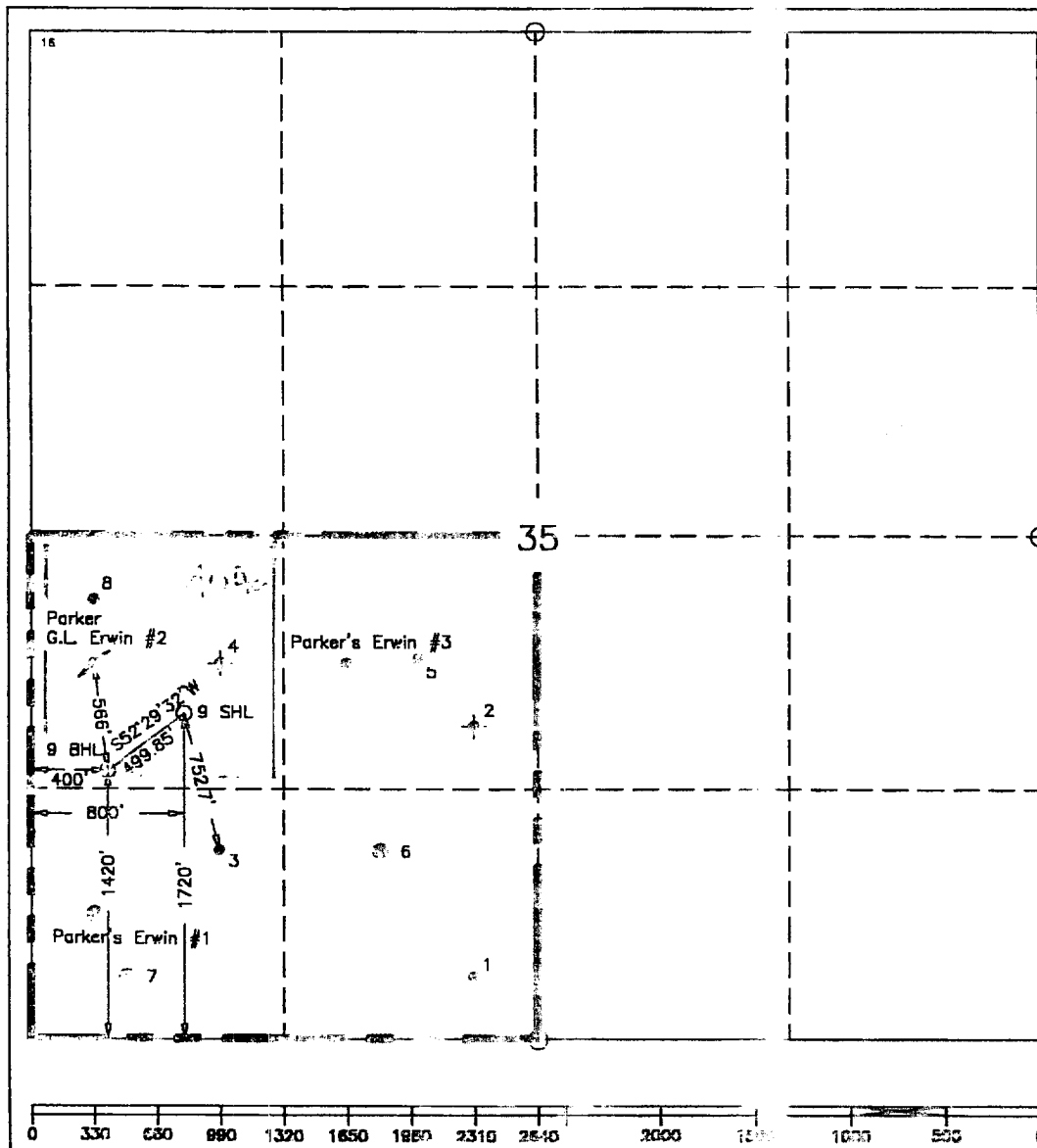
| | | | | | |
|----------------------------|--|---|--|---|---------------------------------|
| ¹ API Number | | ² Pool Code 34200 | | ³ Pool Name Justin Blinbery | |
| ⁴ Property Code | | ⁵ Property Name G.L. Erwin "A" Federal | | | ⁶ Well Number 9 |
| ⁷ GRID No. | | ⁸ Operator Name TEXACO EXPLORATION & PRODUCTION, INC. | | | ⁹ Elevation 3183' |

| ¹⁰ Surface Location | | | | | | | | | |
|--------------------------------|---------------|------------------|---------------|---------|------------------------|---------------------------|-----------------------|------------------------|----------------------------|
| UL or lot no. L | Section 35 | Township 24-S | Range 37-E | Lot Idn | Feet from the 1720' | North/South line South | Feet from the 800' | East/West line West | ⁷ County Lea |

| ¹¹ Bottom Hole Location If Different From Surface | | | | | | | | | |
|--|---------------|------------------|---------------|---------|------------------------------|---------------------------|----------------------------|------------------------|----------------------------|
| UL or lot no. L | Section 35 | Township 24-S | Range 37-E | Lot Idn | Feet from the 1420' 1375' | North/South line South | Feet from the 400' 398' | East/West line West | ⁷ County Lea |

| | | | |
|-------------------------------------|-------------------------------|----------------------------------|-------------------------|
| ¹² Dedicated Acres 40 | ¹³ Joint or Infill | ¹⁴ Consolidation Code | ¹⁵ Order No. |
|-------------------------------------|-------------------------------|----------------------------------|-------------------------|

NO ALLOWABLE WILL BE ASSIGNED TO THIS COMPLETION UNTIL ALL INTERESTS HAVE BEEN CONSOLIDATED
OR A NON-STANDARD UNIT HAS BEEN APPROVED BY THE DIVISION.



| | |
|---|---------------------------|
| ¹⁶ OPERATOR CERTIFICATION | |
| I hereby certify that the information contained herein is true and complete to the best of my knowledge and belief. | |
| Signature | <i>A. Phil Ryan</i> |
| Printed Name | A. Phil Ryan |
| Position | Commissioner Coordinator |
| Company | Texaco Expl. & Prod. Inc. |
| Date | September 11, 2000 |
| ¹⁸ SURVEYOR CERTIFICATION | |
| I hereby certify that the well location shown on this plat was plotted from field notes of actual surveys made by me or under my supervision, and that the same is true and correct to the best of my knowledge and belief. | |
| Date Surveyed | August 29, 2000 |
| Signature & Seal of Professional Surveyor | <i>John S. Piper</i> |
| Certificate No. | 7254 John S. Piper |
| Sheet | |

○ = Staked Location ● = Producing Well ● = Injection Well ○ = Water Supply Well ⊕ = Plugged & Abandon Well