

District I

1625 N. French Dr., Hobbs, NM 88240

District II

811 South First, Artesia, NM 88210

District III

1000 Rio Brazos Road, Aztec, NM 87410

District IV

2040 South Pacheco, Santa Fe, NM 87505

State of New Mexico
Energy Minerals and Natural ResourcesOil Conservation Division
2040 South Pacheco
Santa Fe, NM 87505

Form C-101

Revised March 17, 1999

Submit to appropriate District Office

State Lease - 6 Copies

Fee Lease - 5 Copies

☐ AMENDED REPORT**APPLICATION FOR PERMIT TO DRILL, RE-ENTER, DEEPEN, PLUGBACK, OR ADD A ZONE**

¹ Operator Name and Address OXY USA WTP Limited Partnership P.O. Box 50250 Midland, TX 79710-0250		² OGRID Number 192463
		³ API Number 30-015-35408
³ Property Code 27461	⁵ Property Name OXY Banana Girl	⁶ Well No. 3

⁷ Surface Location

UL or lot no.	Section	Township	Range	Lot Idn	Feet from the	North/South line	Feet from the	East/West line	County
H	9	25S	35E		1980	North	990	East	Lea Fidelity

⁸ Proposed Bottom Hole Location If Different From Surface

UL or lot no.	Section	Township	Range	Lot Idn	Feet from the	North/South line	Feet from the	East/West line	County
⁹ Proposed Pool 1 Undesignated Humphreys Mill Morrow					78875	¹⁰ Proposed Pool 2			

¹¹ Work Type Code N	¹² Well Type Code G	¹³ Cable/Rotary R	¹⁴ Lease Type Code P	¹⁵ Ground Level Elevation 3238'
¹⁶ Multiple No	¹⁷ Proposed Depth 15800'	¹⁸ Formation Morrow	¹⁹ Contractor UTI	²⁰ Spud Date 4/1/01

²¹ Proposed Casing and Cement Program

Hole Size	Casing Size	Casing weight/foot	Setting Depth	Sacks of Cement	Estimated TOC
17-1/2"	13-3/8"	48#	835'	700	Surface
12-1/4"	9-5/8"	36#	5250'	1482	Surface
8-3/4"	7"	26#	12500'	600	8000'
6-1/2"	4-1/2"	11.6#	12300-15800'	520	12300'

²² Describe the proposed program. If this application is to DEEPEN or PLUG BACK, give the data on the present productive zone and proposed new productive zone. Describe the blowout prevention program, if any. Use additional sheets if necessary.

SEE OTHER SIDE

Permit Expires 1 Year From Approval
Date Unless Drilling Underway

²³ I hereby certify that the information given above is true and complete to the best of my knowledge and belief.

Signature:

Printed name: David Stewart

Title: Regulatory Analyst

Date:

2/2/01

Phone: 915-685-5717

OIL CONSERVATION DIVISION

Approved by:

ORIGINAL SIGNED BY CHRIS WILLIAMS
DISTRICT I SUPERVISOR

Title:

Approval Date:

FEB 14 2001

Expiration Date:

Conditions of Approval:

Attached ☐

OXY Banana Girl #3
1980 FNL 990 FEL SEC 9 T25S R35E Lea County, NM

PROPOSED TD: 15800' TVD

BOP PROGRAM: 0-835' None

835-5250' 13-5/8" 3M annular preventer.

5250-12500' 11" 5M blind pipe rams with 5M annular preventer and rotating head below 8300'.

12500-15800' 7-1/16" 10M blind pipe rams with 10M annular preventer and rotating head below 12500'.

CASING: Surface: 13-3/8" OD 48# H40 ST&C new casing set at 835'
17-1/2" hole

Intermediate: 9-5/8" OD 36# K55 ST&C new casing from 0-5250'
12-1/4" hole

Protection: 7" OD 26# N80 ST&C new casing from 0-12500'
8-3/4" hole

Liner: 4-1/2" OD 11.6# P110 LT&C new casing from 12300-15800'
6-1/2" hole

CEMENT: Surface - Circulate cement with 500sx 35:65 POZ/C with 6% Bentonite + 2% CaCl₂
+ 5#/sx LCM-1 followed by 200sx Cl C with 2% CaCl₂.

Intermediate - Circulate cement in two stages - DV tool at 3000' -
1st Stage - 469sx 35:65 POZ/C with 6% Bentonite + 5% Sodium Chloride +
5#/sx LCM-1 followed by 250sx Cl C with 1% CaCl₂.
2nd Stage - 663sx 35:65 POZ/C with 6% Bentonite + 5% Sodium Chloride +
5#/sx LCM-1 followed by 100sx Cl C with 1% CaCl₂.

Protection - Cement with 600sx 15:61:11 POZ/C/CSE with .7% FL-25
+ .7% FL-52 + 5% Potassium Chloride + 5#/sx LCM-1 + 1#/sx BA-61.
Estimated top of cement is 8000'.

Liner - Cement with 520sx Cl H w/ 1% FL-62 + .4% CD-32 1#/sx BA-61.

Note: Cement volumes may need to be adjusted to hole caliper.

MUD: 0-835' Fresh water/native mud. Lime for pH control
(9-10). Paper for seepage.
Wt 8.7-9.2 ppg, Vis 32-34 sec

835-5250' Brine water. Lime for pH control (10.0-10.5). Paper
for seepage.
Wt 8.3-9.0/10.0-10.1ppg, Vis 28-29 sec

5250-8800' Fresh water. Lime for pH control(9-9.5). Paper for
seepage.
Wt 8.3-8.5 ppg, Vis 28-29 sec

8800-12500' Cut brine. Lime for pH control (10-10.5).
Wt 9.6-10.0 ppg, Vis 28-29sec

12500-15800' Mud up with an Duo Vis/Flo Trol mud system.
Wt 9.6-10.0ppg, Vis 32-36sec, WL<10cc

DISTRICT I

1825 N. French Dr., Hobbs, NM 88240

DISTRICT II

811 South First, Artesia, NM 88210

DISTRICT III

1000 Rio Brazos Rd., Artesia, NM 87410

DISTRICT IV

2040 South Pacheco, Santa Fe, NM 87505

State of New Mexico

Energy, Minerals and Natural Resources Department

Form C-102

Revised March 17, 1999

Submit to Appropriate District Office

State Lease - 4 Copies

Fee Lease - 3 Copies

OIL CONSERVATION DIVISION

2040 South Pacheco

Santa Fe, New Mexico 87504-2088

☐ AMENDED REPORT

WELL LOCATION AND ACREAGE DEDICATION PLAT

API Number 30-043- 35408	Pool Code 78875	Pool Name Undesignated Humphreys Mill Morrow
Property Code 27461	Property Name OXY BANANA GIRL	Well Number 3
GRID No. 192463	Operator Name OXY USA WTP Limited Partnership	Elevation 3238'

Surface Location

UL or lot No.	Section	Township	Range	Lot Idn	Feet from the	North/South line	Feet from the	East/West line	County
H	9	25 S	35 E		1980	NORTH	990	EAST	LEA

Bottom Hole Location If Different From Surface

UL or lot No.	Section	Township	Range	Lot Idn	Feet from the	North/South line	Feet from the	East/West line	County

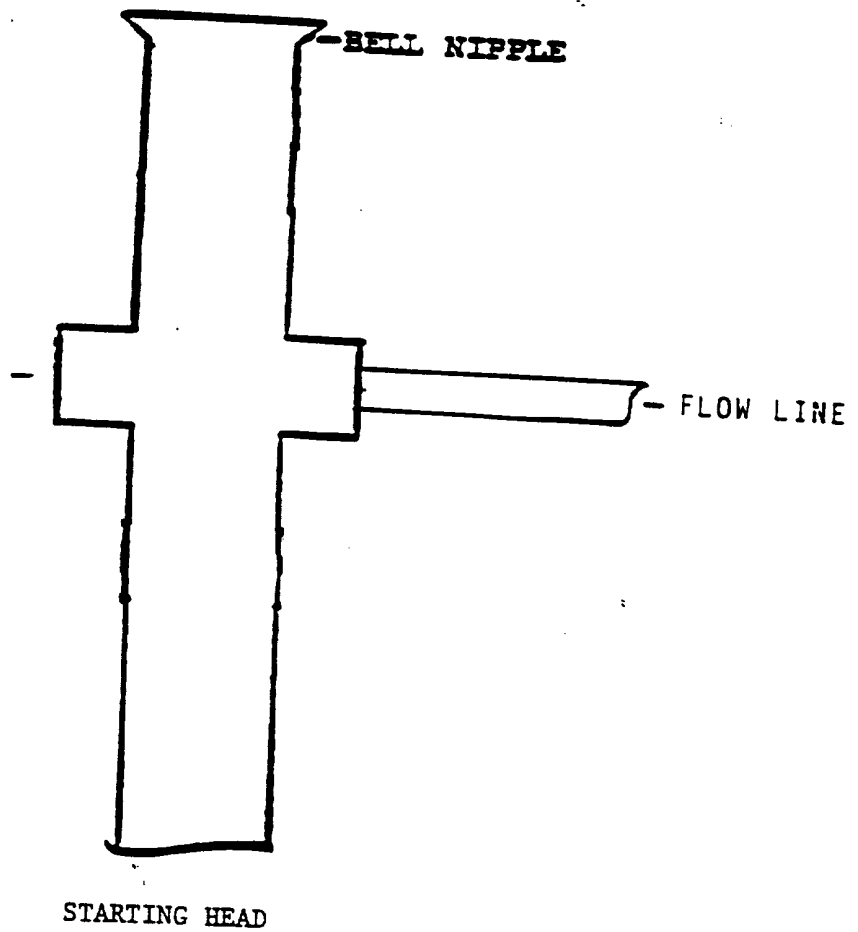
Dedicated Acres	Joint or Infill	Consolidation Code	Order No.
320	N		

NO ALLOWABLE WILL BE ASSIGNED TO THIS COMPLETION UNTIL ALL INTERESTS HAVE BEEN CONSOLIDATED
OR A NON-STANDARD UNIT HAS BEEN APPROVED BY THE DIVISION

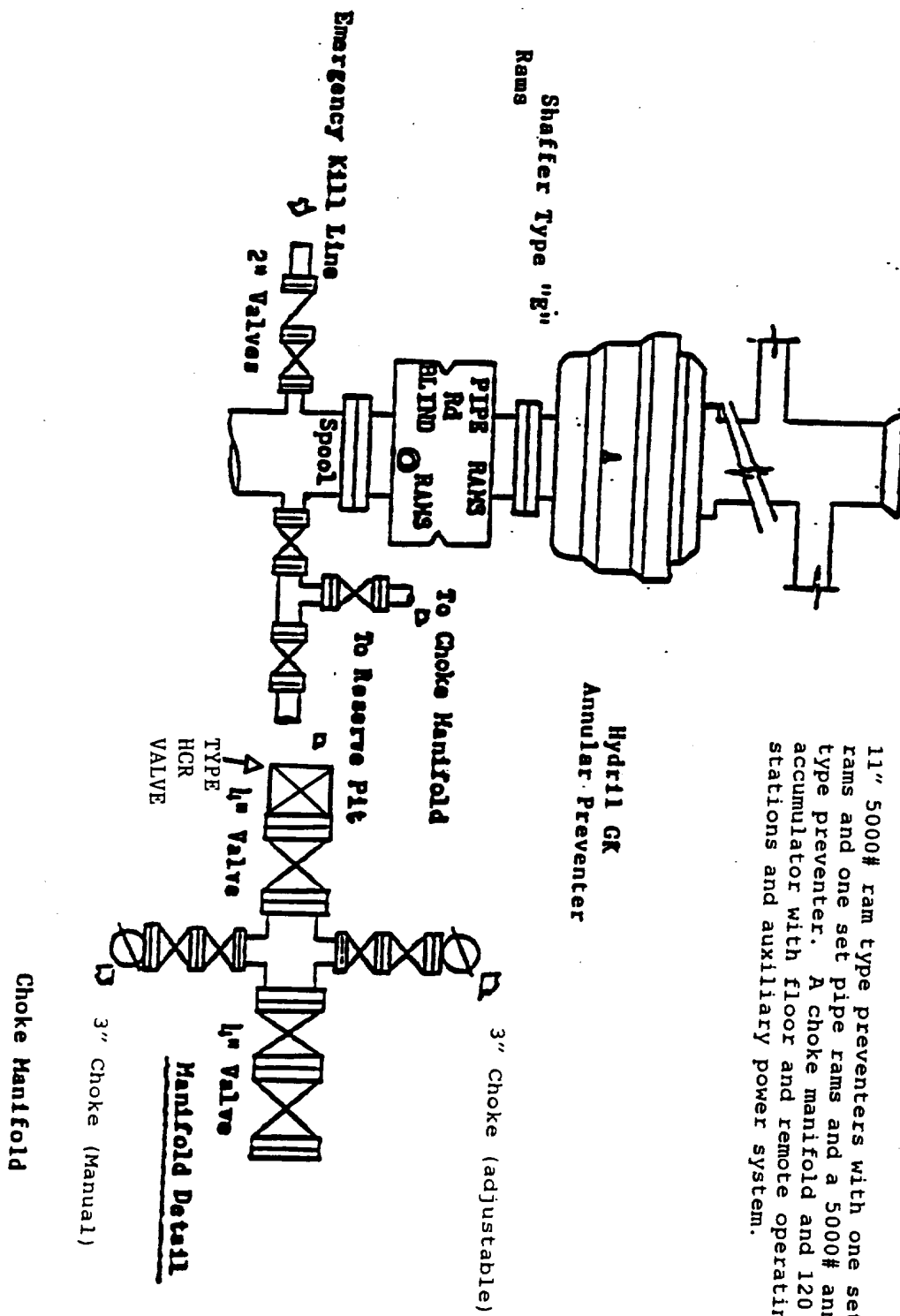
	OPERATOR CERTIFICATION I hereby certify the the information contained herein is true and complete to the best of my knowledge and belief. Signature David Stewart Printed Name Regulatory Analyst Title 2/9/01 Date
	SURVEYOR CERTIFICATION I hereby certify that the well location shown on this plat was plotted from field notes of actual surveys made by me or under my supervision and that the same is true and correct to the best of my belief. October 16, 2000 Date Surveyed Signature & Seal of Professional Surveyor 7077 W.O. No. 0574A Certificate 7077 Jones 7977 BASIN SURVEYS

EXHIBIT A

ANNULAR PREVENTOR
TO BE USED AS DIVERTOR ONLY



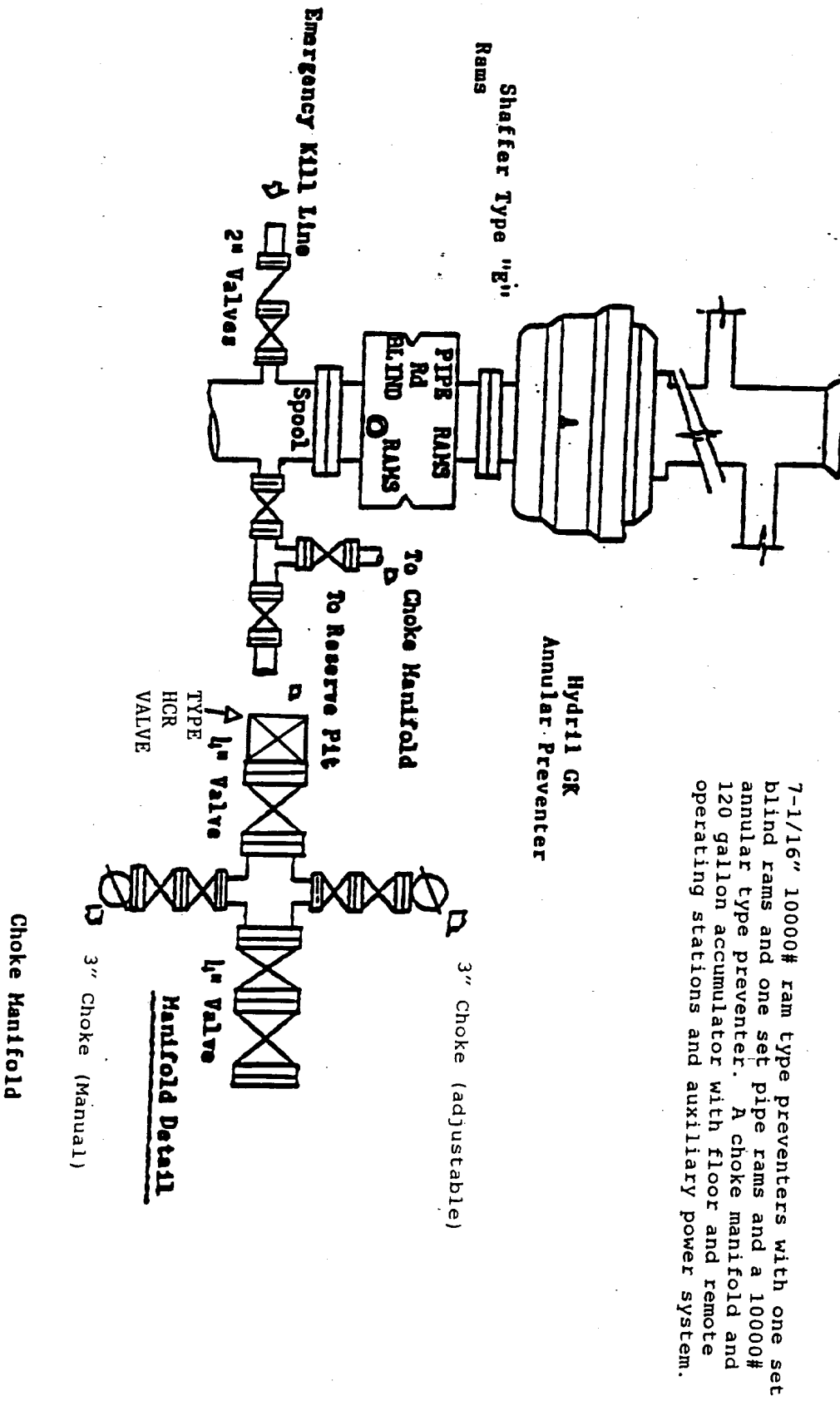
BLOWOUT PREVENTOR SCHEME



11" 5000# ram type preventers with one set blind rams and one set pipe rams and a 5000# annular type preventer. A choke manifold and 120 gallon accumulator with floor and remote operating stations and auxiliary power system.

EXHIBIT A

BLOWOUT PREVENTOR SCHEME



STATE HWY 128



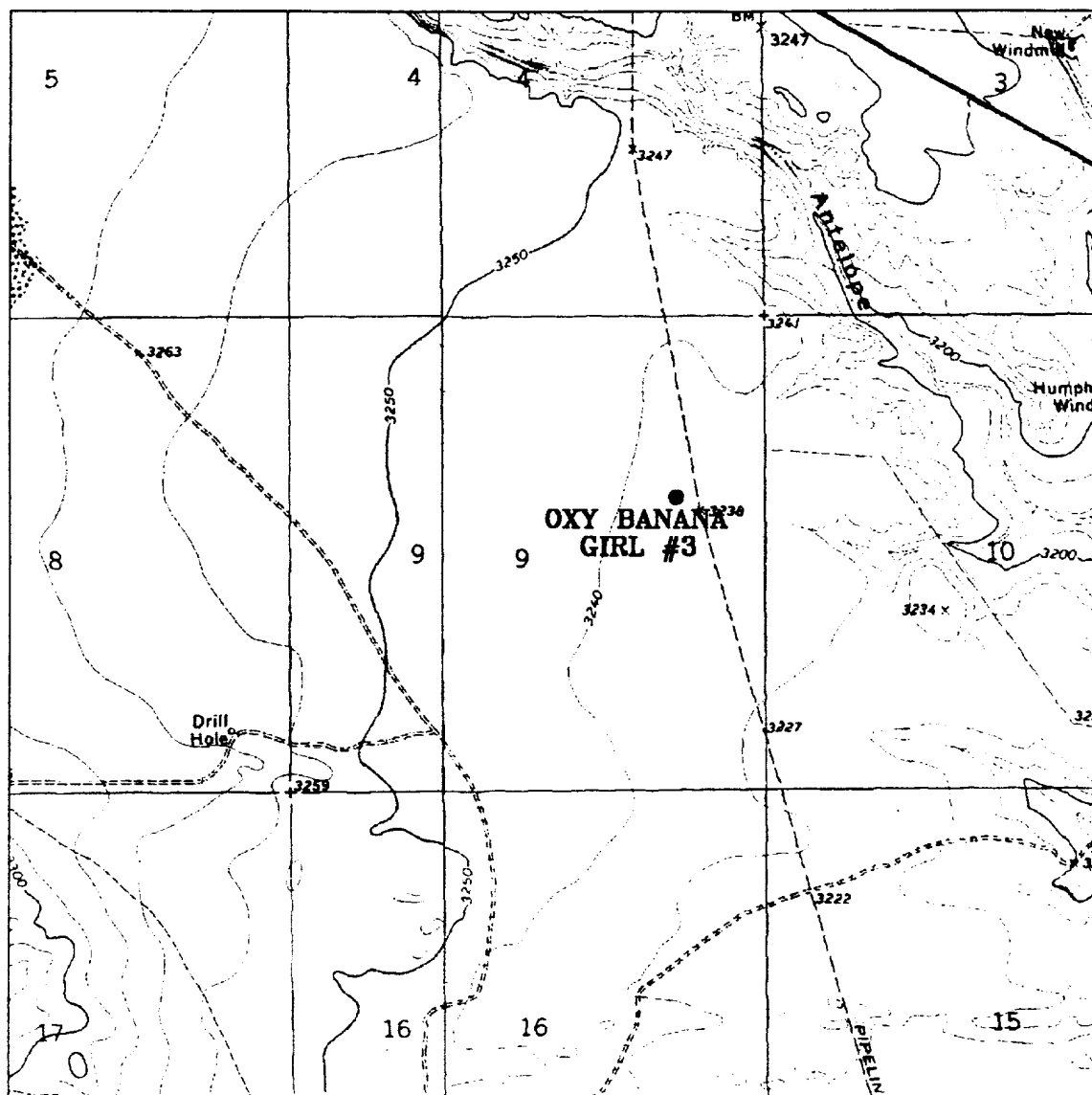
100 0 100 200 FEET

SCALE: 1" = 100'

Oxy USA Inc.

THE OXY BANANA GIRL NO. 3 LOCATED 1980' FROM
THE NORTH LINE AND 990' FROM THE EAST LINE OF
SECTION 9, TOWNSHIP 25 SOUTH, RANGE 35 EAST,
N.M.P.M., LEA COUNTY, NEW MEXICO.

Survey Date: 10-13-2000	Sheet 1 of 1 Sheets
-------------------------	---------------------



OXY BANANA GIRL #3

Located at 1980' FNL and 990' FEL
 Section 9, Township 25 South, Range 35 East,
 N.M.P.M., Lea County, New Mexico.

basin
surveys
 focused on excellence
 in the oilfield

P.O. Box 1786
 1120 N. West County Rd.
 Hobbs, New Mexico 88241
 (505) 393-7316 - Office
 (505) 392-3074 - Fax
 basin-surveys.com

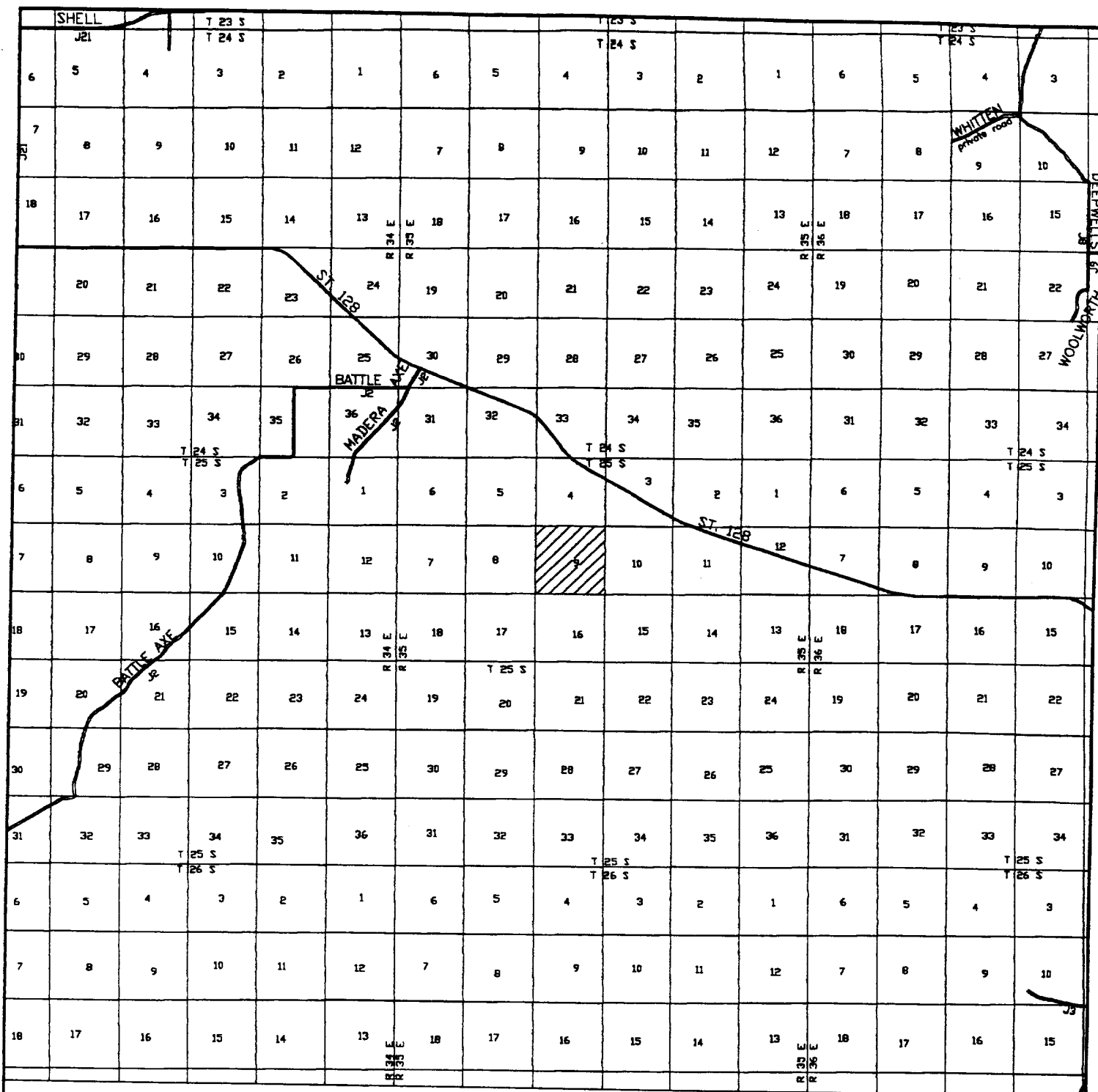
W.O. Number: 0574AA - KJG #122

Survey Date: 10-13-2000

Scale: 1" = 2000'

Date: 10-16-2000

OXY USA INC.



OXY BANANA GIRL #3
 Located at 1980' FNL and 990' FEL
 Section 9, Township 25 South, Range 35 East,
 N.M.P.M., Lea County, New Mexico.

basin
surveys
 focused on excellence
 in the oilfield

P.O. Box 1786
 1120 N. West County Rd.
 Hobbs, New Mexico 88241
 (505) 393-7316 - Office
 (505) 392-3074 - Fax
 basinsurveys.com

W.O. Number: 0574AA - KJG #122

Survey Date: 10-13-2000

Scale: 1" = 2 MILES

Date: 10-16-2000

OXY USA INC.