

District I  
1625 N. French Dr., Hobbs, NM 88240  
District II  
811 South First, Artesia, NM 88210  
District III  
1000 Rio Brazos Road, Aztec, NM 87410  
District IV  
1220 S. St. Francis Dr., Santa Fe, NM 87505

State of New Mexico  
Energy Minerals and Natural Resources

Oil Conservation Division  
1220 South St. Francis Dr.  
Santa Fe, NM 87505

Form C-101  
Revised March 17, 1999

Submit to appropriate District Office  
State Lease - 6 Copies  
Fee Lease - 5 Copies

☐ AMENDED REPORT

APPLICATION FOR PERMIT TO DRILL, RE-ENTER, DEEPEN, PLUGBACK, OR ADD A ZONE

<sup>1</sup> Operator Name and Address KENSON OPERATING COMPANY, INC. P O BOX 3531, MIDLAND, TX 79702		<sup>2</sup> OGRID Number 185433
<sup>3</sup> Property Code 25415		<sup>4</sup> API Number 30-025-35577
<sup>5</sup> Property Name LANGLIE JAL UNIT		<sup>6</sup> Well No. 120

<sup>7</sup> Surface Location

UL or lot no.	Section	Township	Range	Lot kdn	Feet from the	North/South line	Feet from the	East/West line	County
0	31	24S	37E		1100	SOUTH	2365	EAST	LEA

<sup>8</sup> Proposed Bottom Hole Location If Different From Surface

UL or lot no.	Section	Township	Range	Lot kdn	Feet from the	North/South line	Feet from the	East/West line	County

<sup>9</sup> Proposed Pool 1 LANGLIE MATTIX SEVEN RIVERS-QUEEN-GB	<sup>10</sup> Proposed Pool 2
--	-------------------------------

<sup>11</sup> Work Type Code N	<sup>12</sup> Well Type Code O	<sup>13</sup> Cable/Rotary R	<sup>14</sup> Lease Type Code P	<sup>15</sup> Ground Level Elevation 3232'
<sup>16</sup> Multiple NO	<sup>17</sup> Proposed Depth 3800'	<sup>18</sup> Formation 7 RIVERS-QUEEN UNITED DRLG	<sup>19</sup> Contractor	<sup>20</sup> Spud Date 7-16-01

<sup>21</sup> Proposed Casing and Cement Program

Hole Size	Casing Size	Casing weight/foot	Setting Depth	Sacks of Cement	Estimated TOC
11"	8-5/8"	23#	800'	160 CLASS C	CIRCULATE
7-7/8"	5-1/2"	15.5#	3800'	800 CLASS C	CIRCULATE

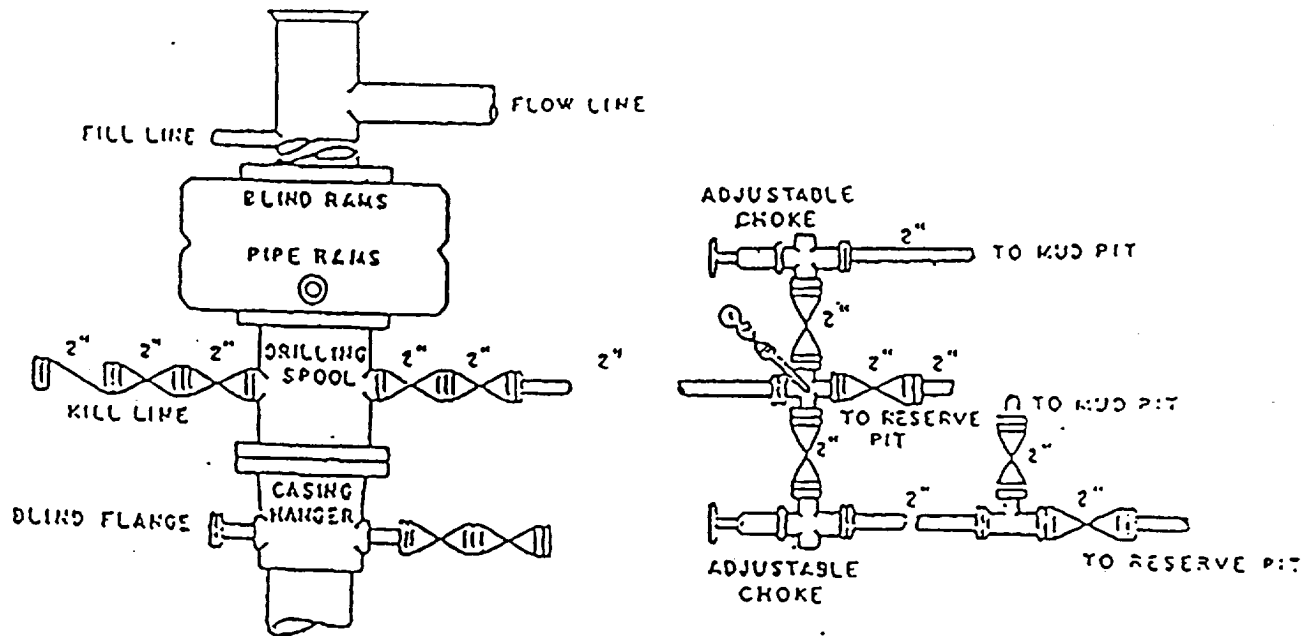
<sup>22</sup> Describe the proposed program. If this application is to DEEPEN or PLUG BACK, give the data on the present productive zone and proposed new productive zone. Describe the blowout prevention program, if any. Use additional sheets if necessary.

Permit Expires 1 Year From Approval  
Date Unless Drilling Underway

<sup>23</sup> I hereby certify that the information given above is true and complete to the best of my knowledge and belief. Signature: <i>M. A. Sirgo III</i>		OIL CONSERVATION DIVISION	
Printed name: M. A. SIRGO, III		Approved by: <i>WILLIAM C. ...</i>	
Title: ENGINEER		Title: DISTRICT I SUPERVISOR	
Date: 5-31-01		Approval Date:	Expiration Date:
Phone: 915/685.0878		Conditions of Approval:	
		Attached <input type="checkbox"/>	

80 msp

KENSON OPERATING COMPANY, INC.  
 LANGLIE JAL UNIT WELL NO. 120  
 LEA COUNTY, NEW MEXICO



BOP DIAGRAM

3000# Working Pressure  
 Rams Operated Daily

## DISTRICT I

P.O. Box 1980, Hobbs, NM 88241-1980

## DISTRICT II

P.O. Drawer DD, Artesia, NM 88211-0719

## DISTRICT III

1000 Rio Brazos Rd., Aztec, NM 87410

## DISTRICT IV

P.O. Box 2088, Santa Fe, N.M. 87504-2088

## State of New Mexico

Energy, Minerals and Natural Resources Department

## OIL CONSERVATION DIVISION

P.O. Box 2088

Santa Fe, New Mexico 87504-2088

Form C-102

Revised February 10, 1994

Submit to Appropriate District Office

State Lease - 4 Copies

Fee Lease - 3 Copies

## WELL LOCATION AND ACREAGE DEDICATION PLAT

☐ AMENDED REPORT

API Number <b>30-025-35577</b>		Pool Code <b>37240</b>	Pool Name <b>LANGLIE MATTIX SEVEN RIVERS-QUEEN</b>
Property Code <b>25415</b>	Property Name <b>LANGLIE JAL UNIT</b>		Well Number <b>120</b>
GRID No. <b>185433</b>	Operator Name <b>KENSON OPERATING COMPANY, INC.</b>		Elevation <b>3232'</b>

## Surface Location

UL or lot No.	Section	Township	Range	Lot Idn	Feet from the	North/South line	Feet from the	East/West line	County
<b>0</b>	<b>31</b>	<b>24-S</b>	<b>37-E</b>		<b>1100</b>	<b>SOUTH</b>	<b>2365</b>	<b>EAST</b>	<b>LEA</b>

## Bottom Hole Location If Different From Surface

UL or lot No.	Section	Township	Range	Lot Idn	Feet from the	North/South line	Feet from the	East/West line	County
Dedicated Acres <b>40</b>		Joint or Infill	Consolidation Code		Order No.				

NO ALLOWABLE WILL BE ASSIGNED TO THIS COMPLETION UNTIL ALL INTERESTS HAVE BEEN CONSOLIDATED  
OR A NON-STANDARD UNIT HAS BEEN APPROVED BY THE DIVISION

LOT 1			
38.09 AC LOT 2			
38.10 AC LOT 3			
38.12 AC LOT 4			
38.13 AC			

Diagram showing dimensions: 1100' (vertical) and 2365' (horizontal).

## OPERATOR CERTIFICATION

I hereby certify the information contained herein is true and complete to the best of my knowledge and belief.

*M. A. Sirgo, III*  
Signature  
M. A. SIRGO, III  
Printed Name  
ENGINEER  
Title  
MAY 30, 2001  
Date

## SURVEYOR CERTIFICATION

I hereby certify that the well location shown on this plat was plotted from field notes of actual surveys made by me or under my supervision and that the same is true and correct to the best of my belief.

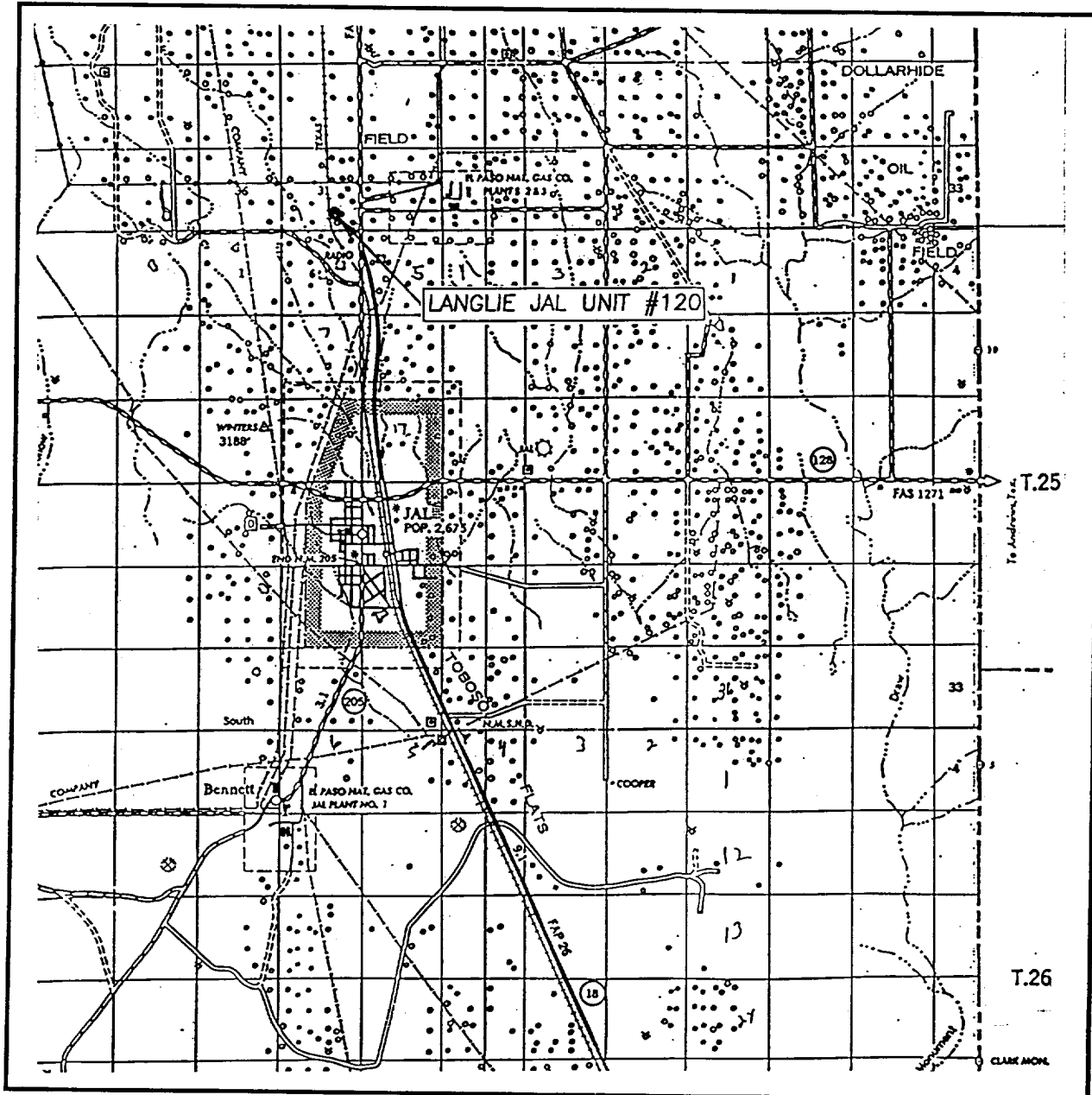
MAY 23, 2001

Date Surveyed  
Signature & Seal of Professional Surveyor  
AWB

*Ronald J. Kidson*  
5/24/01  
01-11-0626

Certificate No. RONALD J. KIDSON 3239  
GARY KIDSON 12641

# VICINITY MAP



SCALE: 1" = 2 MILES

SEC. 31 TWP. 24-S RGE. 37-E

SURVEY N.M.P.M.

COUNTY LEA

DESCRIPTION 1100' FSL & 2365' FEL

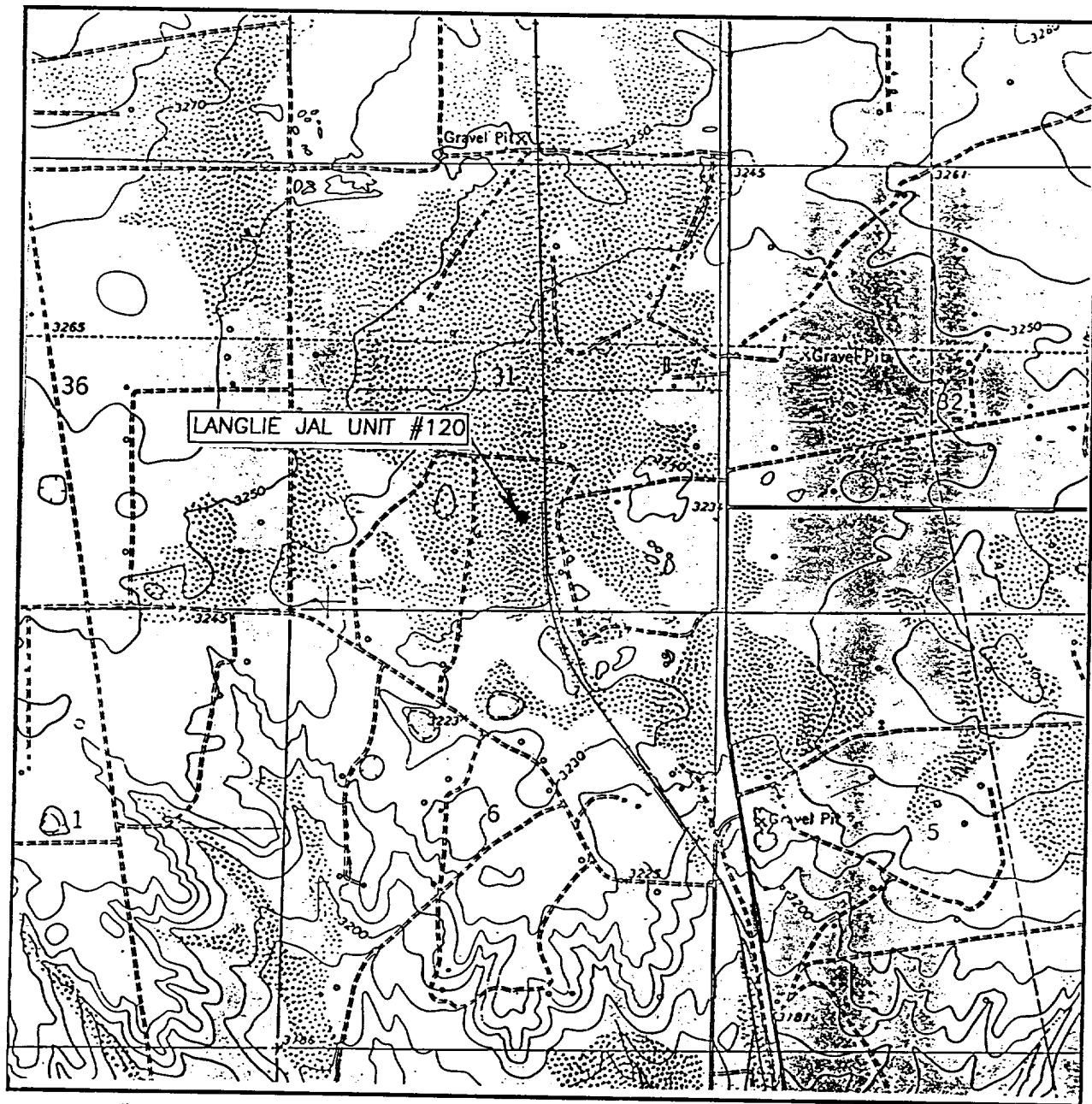
ELEVATION 3232'

OPERATOR KENSON OPERATING COMPANY, INC.

LEASE LANGLIE JAL UNIT

JOHN WEST SURVEYING  
HOBBS, NEW MEXICO  
(505) 393-3117

# LOCATION VERIFICATION MAP



SCALE: 1" = 2000'

CONTOUR INTERVAL: 10'  
JAL NW, N.M.

SEC. 31 TWP. 24-S RGE. 37-E

SURVEY N.M.P.M.

COUNTY LEA

DESCRIPTION 1100' FSL & 2365' FEL

ELEVATION 3232'

OPERATOR KENSON OPERATING COMPANY, INC.

LEASE LANGLIE JAL UNIT

U.S.G.S. TOPOGRAPHIC MAP

JAL NW, N.M.

JOHN WEST SURVEYING  
HOBBS, NEW MEXICO  
(505) 393-3117