

DISTRICT I
P. O. Box 1980
Hobbs, NM 88241-1980

State of New Mexico
Energy, Minerals, and Natural Resources Department

Form C-102
Revised 02-10-94
Instructions on back

DISTRICT II
P. O. Drawer DD
Artesia, NM 88211-0719

OIL CONSERVATION DIVISION
P. O. Box 2088
Santa Fe, New Mexico 87504-2088

Submit to the Appropriate
District Office
State Lease - 4 copies
Fee Lease - 3 copies

DISTRICT III
1000 Rio Brazos Rd.
Aztec, NM 87410

☐ AMENDED REPORT

DISTRICT IV
P. O. Box 2088
Santa Fe, NM 87507-2088

WELL LOCATION AND ACREAGE DEDICATION PLAT

¹ API Number 30-025-35901	² Pool Code 51820 51020	³ Pool Name Red Hills Bone Spring
⁴ Property Code 26406	⁵ Property Name RED HILLS NORTH UNIT	⁶ Well Number 606 H
⁷ OGRID No. 7377	⁸ Operator Name EOG RESOURCES, INC.	⁹ Elevation 3433'

¹⁰ SURFACE LOCATION

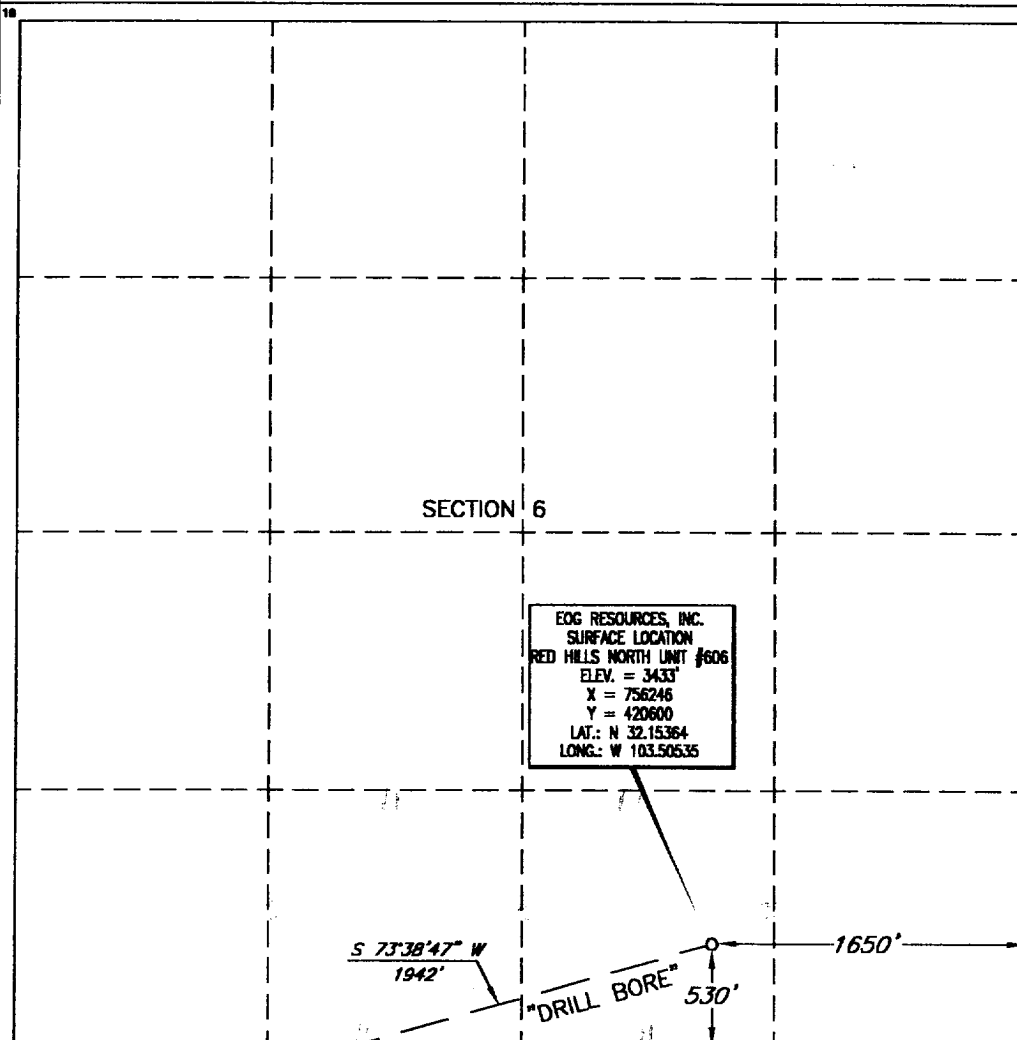
UL or lot no.	Section	Township	Range	Lot Ida	Feet from the	North/South line	Feet from the	East/West line	County
0	6	25 SOUTH	34 EAST, N.M.P.M.		530'	SOUTH	1650'	EAST	LEA

"BOTTOM HOLE LOCATION IF DIFFERENT FROM SURFACE"

UL or lot no.	Section	Township	Range	Lot Ida	Feet from the	North/South line	Feet from the	East/West line	County

¹² Dedicated Acres 320	¹³ Joint or Infill	¹⁴ Consolidation Code	¹⁵ Order No.
--------------------------------------	-------------------------------	----------------------------------	-------------------------

NO ALLOWABLE WELL BE ASSIGNED TO THIS COMPLETION UNTIL ALL INTERESTS HAVE BEEN CONSOLIDATED OR A NON-STANDARD UNIT HAS BEEN APPROVED BY THE DIVISION



OPERATOR CERTIFICATION

I hereby certify that the information contained herein is true and complete to the best of my knowledge and belief.

Signature
Mike Francis
Printed Name
Mike Francis
Title
Agent
Date
2/26/02

SURVEYOR CERTIFICATION

I hereby certify that the well location shown on this plat was plotted from field notes of actual surveys made by me or under my supervision, and that the same is true and correct to the best of my belief.

Date of Survey
FEBRUARY 22, 2002
Signature and Seal of Professional Surveyor
V. L. BERNER
Certified N4
V. L. BERNER R.P.S. #7920
JOB #80589-1 / 22 NE / J.C.P.