

(August 1999)

DEPARTMENT OF THE INTERIOR
BUREAU OF LAND MANAGEMENT

1625 N. French Drive
Hk 3 NM 88240
OMB NO. 1004-0136
Expires: November 30, 2000

APPLICATION FOR PERMIT TO DRILL OR REENTER

1a. Type of Work <input checked="" type="checkbox"/> DRILL <input type="checkbox"/> REENTER		5. Lease Serial No. NM-14218
1b. Type of Well <input checked="" type="checkbox"/> Oil Well <input type="checkbox"/> Gas Well <input type="checkbox"/> Other <input checked="" type="checkbox"/> Single Zone <input type="checkbox"/> Multiple Zone		6. If Indian, Allottee or Tribe Name
2. Name of Operator TEXACO EXPLORATION AND PRODUCTION INC. Chevron U.S.A. Inc.		7. Unit or CA Agreement Name and No.
3a. Address 15 SMITH ROAD, MIDLAND, TX 79705	3b. Phone No. (include area code) (915) 687-7375	8. Lease Name and Well No. C C FRISTOE 'B' FED NCT-2 #28
4. Location of Well (Report location clearly and in accordance with any State requirements)* At surface UNIT LETTER O, 760' FSL, 1880' FEL At proposed prod. zone SAME 0		9. API Well No. 30-025-35983
14. Distance in miles and direction from nearest town or post office* 5 MILES NE OF JAL, NM		10. Field and Pool, or Exploratory LANGLIE MATTIX 7 RVRS ON GRBRG
15. Distance from proposed* location to nearest property or lease line, ft. (Also to nearest drg. unit line, if any) 760'	16. No. of Acres in lease 400	11. Sec., T., R., M., or Blk. and Survey or Area SEC 26, T-24-S, R-37-E
18. Distance from proposed location* to nearest well, drilling, completed, applied for, on this lease, ft. 253'	19. Proposed Depth 4050'	12. County or Parish LEA
21. Elevations (Show whether DF, KDB, RT, GL, etc.) 3172' GL	22. Approximate date work will start* 7-15-02	13. State NM
24. Attachments Carbon Controlled Water Basin		17. Spacing Unit dedicated to this well 40
20. BLM/BIA Bond No. on file CO-0058		

The following, completed in accordance with the requirements of Onshore Oil and Gas Order No. 1, shall be attached to this form:

- | | |
|---|--|
| 1. Well plat certified by a registered surveyor. | 4. Bond to cover the operations unless covered by an existing bond on file (see Item 20 above). |
| 2. A Drilling Plan | 5. Operator certification. |
| 3. A Surface Use Plan (if the location is on National Forest System Lands, the SUPO shall be filed with the appropriate Forest Service Office). | 6. Such other site specific information and or plans as may be required by the authorized officer. |

25. Signature <i>J. Denise Leake</i>	Name (Printed/Typed) J. DENISE LEAKE	Date 6-05-02
Title REGULATORY & PERMIT SPECIALIST		
Approved by (Signature) /S/ JOE G. LARA	Name (Printed/Typed) /S/ JOE G. LARA	Date AUG 22 2002
Title ACTING FIELD MANAGER	Office CARLSBAD FIELD OFFICE	

Application approval does not warrant or certify that the applicant holds legal or equitable title to those rights in the subject lease which would entitle the applicant to conduct operations thereon.

Conditions of approval, if any, are attached.

APPROVAL FOR 1 YEAR

Title 18 U.S.C. Section 1001 and Title 43 U.S.C. Section 1212, make it a crime for any person knowingly and willfully to make to any department or agency of the United States any false, fictitious or fraudulent statements or representations as to any matter within its jurisdiction.

*(Instructions on Reverse)

**APPROVAL SUBJECT TO
GENERAL REQUIREMENTS AND
SPECIAL STIPULATIONS
ATTACHED**

4323
29917
37240
EFF. DATE 8-27-02
API NO. 30-025-35983

S
C
A

Key ml

DRILLING PROGRAM

Attachment to Form 3160-3
Texaco Exploration & Production Inc.
C. C. Fristoe "B" NCT-2 #28
760' FSL & 1880' FEL
Section 26, T-24S, R-37E
Lea County, New Mexico

Elevation of unprepared ground: 3172'

Type Drilling Tools: Rotary

Proposed Drilling Depth: 4050'

Estimated Top of Geologic Markers:

Rustler	926'	Anhydrite
Tansill	2294'	
Yates	2453'	Sandstone
Seven Rivers	2700'	
Queen	3186'	
Grayburg	3466'	Dolomite
San Andres	3647'	Dolomite
Total Depth	4050'	

Estimated Depths at which target Formations expected:

Langlie Mattix Seven Rivers Queen Grayburg 4050'

Casing Program and Setting Depths:

Hole Size	Casing Size	Weight	Grade	Setting Depth
11"	8 5/8"	24#	J-55	950'
7 7/8"	5 1/2"	15.5#	K-55	4050'

Duration of Operation: 10 Days to Drill

Casing Setting Depths and Cementing Program:

- A. Surface casing will be cemented to surface using 590 sacks Class "C" cement with 2% CaCl₂.
- B. Production casing will be cemented with 550 sacks Class "H" cement with 6% gel, 5% salt, & ¼# cell, tailed in with 300 sacks Class "H" 50/50 poz with 2% gel, 5% salt, & ¼# cell.

Mud Program:

Depth	Type	Weight	Remarks
0-950'	Fresh Water	8.4	Circulate pits 28 viscosity
950-4050'	Brine	10	Circulate reserves. 29 vis

Testing, Logging, and Coring Program:

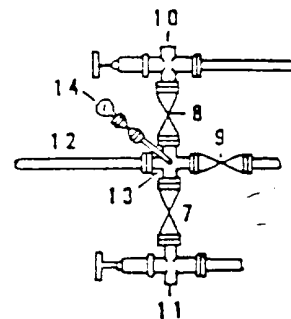
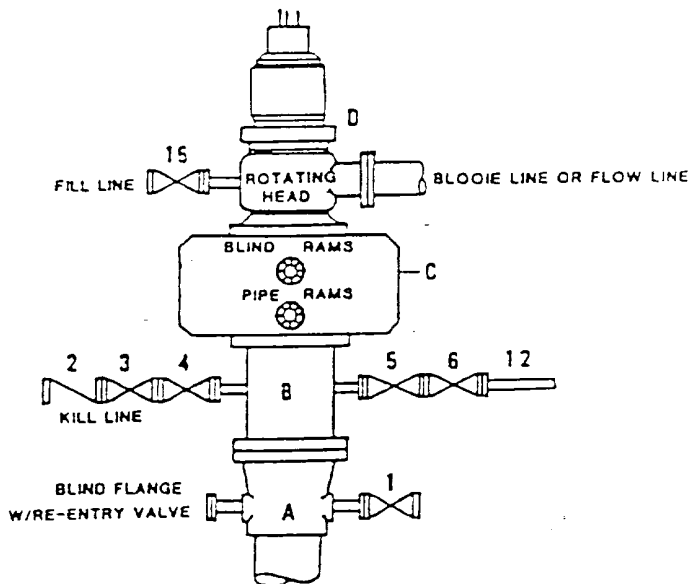
- A. Salt Muds below Surface for logging requirements
- B. Install H₂S equipment from 950' – TD
- C. Mudloggers from Surface to TD
- D. No coring is planned.

Anticipated Starting Date:

Drilling operations should begin upon approval of this permit and will take approximately 10 days. Completion operations will begin soon after drilling is completed and will take approximately two weeks.

**DRILLING CONTROL
CONDITION II-B 3000 WP
FOR AIR DRILLING OR
WHERE NITROGEN OR AIR BLOWS ARE EXPECTED**

H₂S TRIM REQUIRED
YES _____ NO X



DRILLING CONTROL

MATERIAL LIST - CONDITION II - B

- A Texaco Wellhead
- B 3000# W.P. drilling spool with a 2" minimum flanged outlet for kill line and 3" minimum flanged outlet for choke line.
- C 3000# W.P. Dual ram type preventer, hydraulic operated with 1" steel, 3000# W.P. control lines (where sub-structure height is adequate, 2 - 3000# W.P. single ram type preventers may be utilized).
- D Rotating Head with fill up outlet and extended Bloode Line.
- 1,3,4, 7,8, 2" minimum 3000# W.P. flanged full opening steel gate valve, or Halliburton Lo Torc Plug valve.
- 2 2" minimum 3000# W.P. back pressure valve.
- 5,6,9 3" minimum 3000# W.P. flanged full opening steel gate valve, or Halliburton Lo Torc Plug valve.
- 12 3" minimum schedule 80, Grade "B", seamless line pipe.
- 13 2" minimum x 3" minimum 3000# W.P. flanged cross.
- 10,11 2" minimum 3000# W.P. adjustable choke bodies.
- 14 Cameron Mud Gauge or equivalent (location optional in choke line).
- 15 2" minimum 3000# W.P. flanged or threaded full opening steel gate valve, or Halliburton Lo Torc Plug valve.



TEXACO, INC.
MIDLAND DIVISION
MIDLAND, TEXAS



SCALE	DATE	EST NO	DRG NO
DRAWN BY			
CHECKED BY			
APPROVED BY			

EXHIBIT C

SURFACE USE AND OPERATING PLAN

Attachment to Form 3160-3
Texaco Exploration and Production Inc.
C. C. Fristoe "B" Federal NCT-2 #28
760' FSL & 1880' FEL
Section 26, T-24S, R-37-E
Lea County, New Mexico

FEDERAL LEASE NUMBER: NM 14218

LEASE ISSUED: Lease is in a producing status

ACRES IN LEASE: 400

RECORD LESSEE: TEXACO EXPLORATION AND PRODUCTION INC.

SURFACE OWNERSHIP: Bill and Elena Grobe
P. O. Box G
Jal, New Mexico 88252
(505) 395-3189

POOL: Langlie Mattix Seven Rivers Queen Grayburg

POOL RULES: Field rules are for no wells to be located closer than 330' to any quarter-quarter section and to be 330' from the lease line.

EXHIBITS: A. Access Road and Facilities Map
B. Drilling Rig Layout
C. Well Location and Acreage Dedication Plat

Existing Roads:

The well site and elevation plat for the proposed C. C. Fristoe "B" Fed NCT-2 #28 are attached. It was staked by John S. Piper of Piper Surveying, on May 20, 2002.

Proposed access Road:

Existing road will be utilized.

Location of Existing and/or Proposed facilities:

The oil, gas, and/or water that this well produces will be transported by a 2 7/8" steel surface flowline, approximately 3440 feet in length to the C. C. Fristoe Consolidated

Tank Battery located in the Northeast quarter of the Northeast quarter of said Section 35, as shown on Exhibit "A".

Upon completion of drilling, a sundry notice will be sent to the BLM.

To protect livestock and wildlife, the reserve pit will be fenced.

Upon completion of drilling, the location and surrounding area will be cleared of all debris. All trash will be disposed of in the trash bin.

LOCATION AND TYPE OF WATER SUPPLY:

It is not contemplated that a water well would be drilled. Water necessary for drilling operations will be purchased and trucked to the well site or will be transported to the well site by a temporary pipeline laid on the ground alongside existing and proposed roads.

SOURCE OF CONSTRUCTION MATERIALS:

Caliche needed for the well pad will be taken from the proposed borrow pit located within the 400 x 400' archaeologically cleared tract at the proposed well site (See Exhibit "B" for location). If sufficient quality or quantity of caliche is not available, it will be transported to the proposed road and well site from the existing pit located in the SE/4 of the SE/4 of Section 35, T24S, R37E, Lea County, as shown on Exhibit "A" along the existing resource roads.

METHOD OF HANDLING WASTE DISPOSAL:

Drill cuttings will be disposed of in the drilling pits.

Drilling fluids will be allowed to evaporate in the drilling pits until the pits are dry.

Water produced during tests will be disposed of at commercial or company facilities.

Oil produced during tests will be stored in test tanks until sold.

Trash, waste paper, garbage and junk will be stored in a trash bin located on the drill site pad. It will be transported to an approved landfill for disposal within 30 days after completion of drilling and/or completion of operations. All waste material will be contained to prevent scattering by the wind.

ANCILLARY FACILITIES:

None required.

WELL SITE LAYOUT:

Exhibit "B" shows the relative location and dimensions of the well pad, mud pits, borrow pit, and the location of the major rig components.

Cut and Fill requirements will be minor, but clearing and leveling of the well site will be necessary.

PLANS FOR RECLAMATION OF THE SURFACE:

After completion of drilling and/or completion of operations, all equipment and other material not necessary for operations will be removed. Pits will be filled and the location will be cleaned of all trash and junk to leave the well site in an as aesthetically pleasing condition as possible.

Any unguarded pits containing fluids will be fenced until the pits are dry.

After abandonment, all equipment, trash and junk will be removed and the well site will be cleaned. Any special reclamation and/or special revegetation requirements of the Surface Management Agency will be complied with and will be accomplished as rapidly as possible.

Refer to archaeological report performed by Lone Mountain Archaeological Services, Inc. for a description of the topography, flora, fauna, soil characteristics, dwellings, historical and cultural sites.

LAND USE:

Grazing, oil and gas production, and wildlife habitat.

SURFACE OWNERSHIP:

Private fee.

OPERATOR'S REPRESENTATIVE

J. Denise Leake
Regulatory and Permit Specialist
ChevronTexaco
15 Smith Road
Midland, Texas 79705
Office Phone: (915) 687-7375

CERTIFICATION:

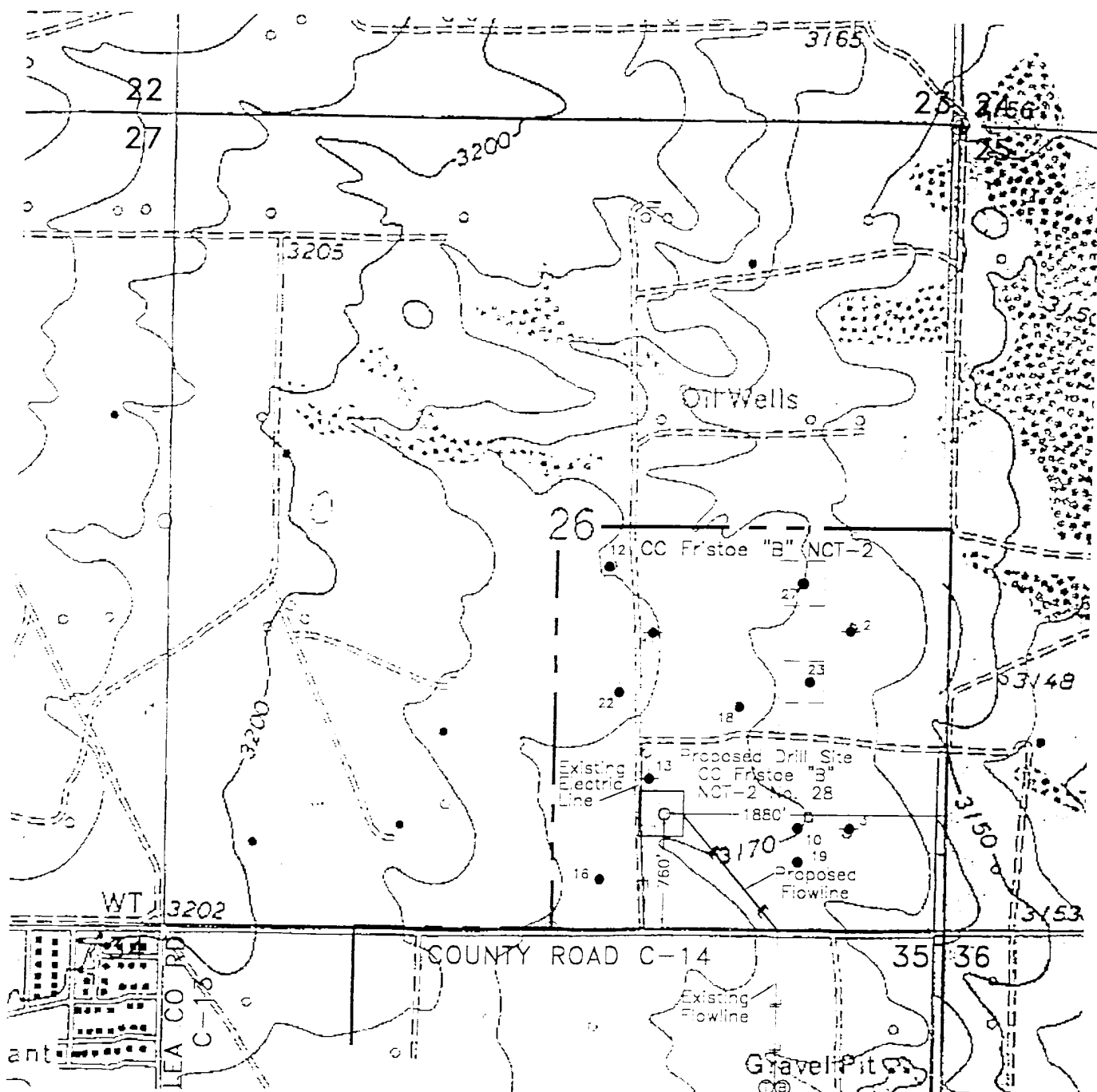
I hereby certify that I, or a ChevronTexaco representative, have inspected the proposed drill site and access road; that the statements made in this plan are, to the best of my knowledge, true and correct; and that the work associated with the operations proposed herein will be performed by ChevronTexaco and its contractors and subcontractors in conformity with this plan and the terms and conditions under which it is approved..

Date: 6-06-02

Signed: J. Denise Leake

J. Denise Leake
Regulatory & Permit Specialist

Attachments



LEGEND OF SYMBOLS

- = Access Road (Yellow)
- = Access Road on Lease (Purple)
- = Resource Road on State Land (Blue)
- = Resource Road on Private Land (Pink)
- = Resource Road on Federal Land (Brown)
- = Proposed Resource Road (Red)
- = Proposed Electric Line (Orange)
- = Proposed Production Flow Line (Green)
- o = Staked Well Location
- o = Producing Well Location
- o = Water Injection Well
- o = Found 1" Iron Pipe with Brass Cap
- o = Found 2" or 3" Iron Pipe with Brass Cap
- = Unit or Lease Boundary

EXHIBIT "A" ACCESS ROAD AND FACILITIES MAP

TEXACO EXPLORATION AND PRODUCTION INC.

C.C. FRISTOE "B" FEDERAL NCT-2 NO. 28
Located 760' FSL & 1880' FEL, Section 26,
T-24-S, R-37-E, NMPM, Lea County, NM

Drawn by: Gene Rodriguez

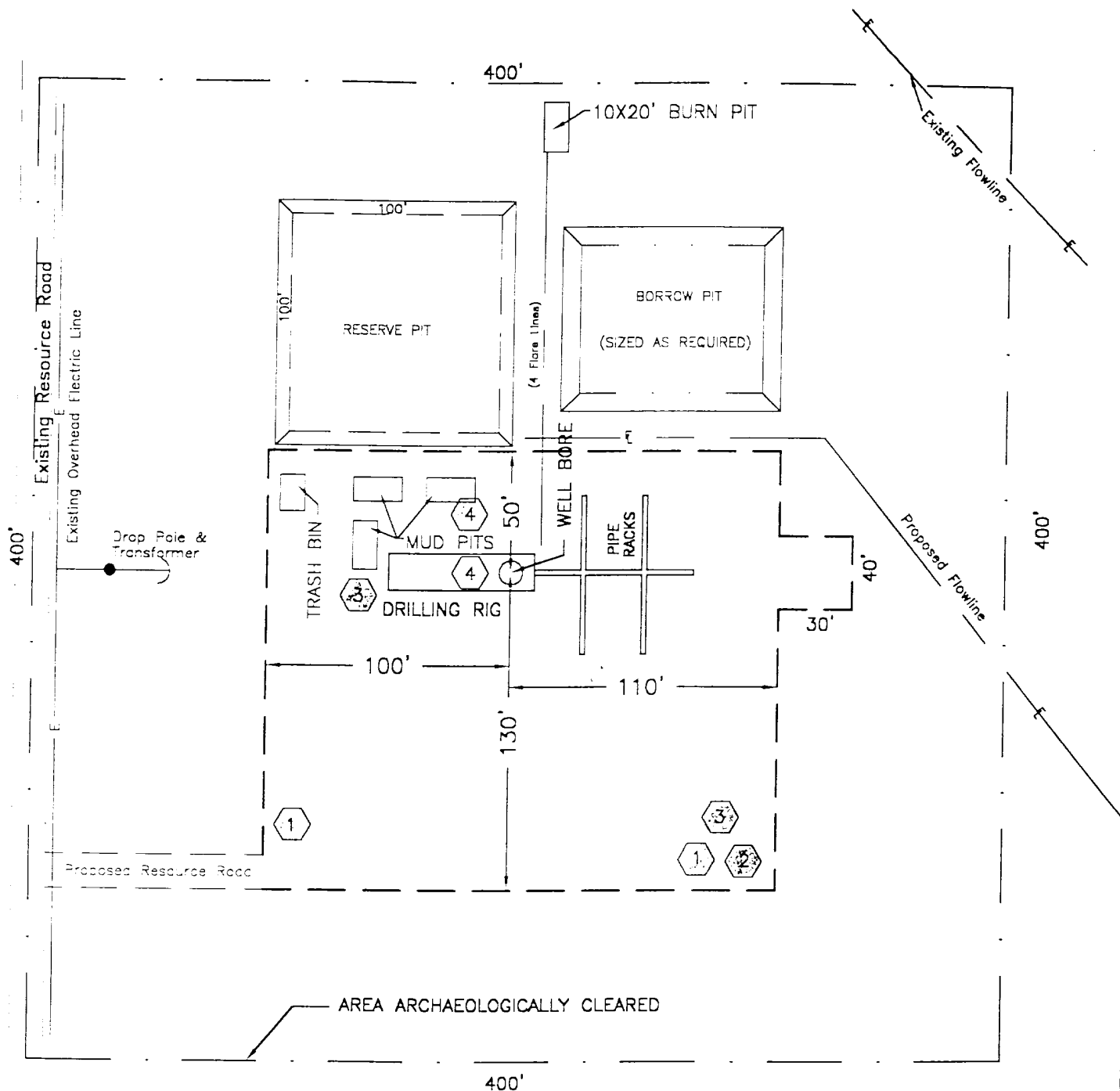
Scale: 1" = 1000'

Date: May 17, 2002

Randy Shannon

Checked by: J. S. Piper

Drawing File: Fris_b28A.Dwg



- H₂S DRILLING OPERATION PLAN**
- Briefing Station
- H₂S Safety Trailer
- Windssocks
- H₂S Detectors, Shale Shaker, Rotating Head, Rig Floor
- Prevailing Wind from the South

EXHIBIT "B"	
DRILLING RIG LAYOUT	
TEXACO EXPLORATION AND PRODUCTION INC.	
C.C. FRISTOE "B" FEDERAL NCT-2 NO. 28 Located 760' FSL & 1880' FEL, Section 26, T-24-S, R-37-E, NMPM, Lea County, NM	
Drawn by: Gene M. Rodriguez	Scale: 1" = 60'
Date: May 17, 2002	Randy Shannon
Checked by: J. S. Piper	Drawing File: Fris_B28B.Dwg

DISTR CT 1
P. O. Box 1980, Hobbs, NM 88240

DISTRICT II
P. O. Drawer DD, Artesia, NM 88210

DISTRICT III
1000 Rio Brazos Rd., Aztec, NM 87410

DISTRICT IV
P. O. Box 2088, Santa Fe, NM 87504-2088

State of New Mexico
Energy, Minerals and Natural Resources Department

OIL CONSERVATION DIVISION

PO Box 2088
Santa Fe, NM 87504-2088

Form C-102
Revised February 10, 1994

Instructions on back

Submit to Appropriate District Office

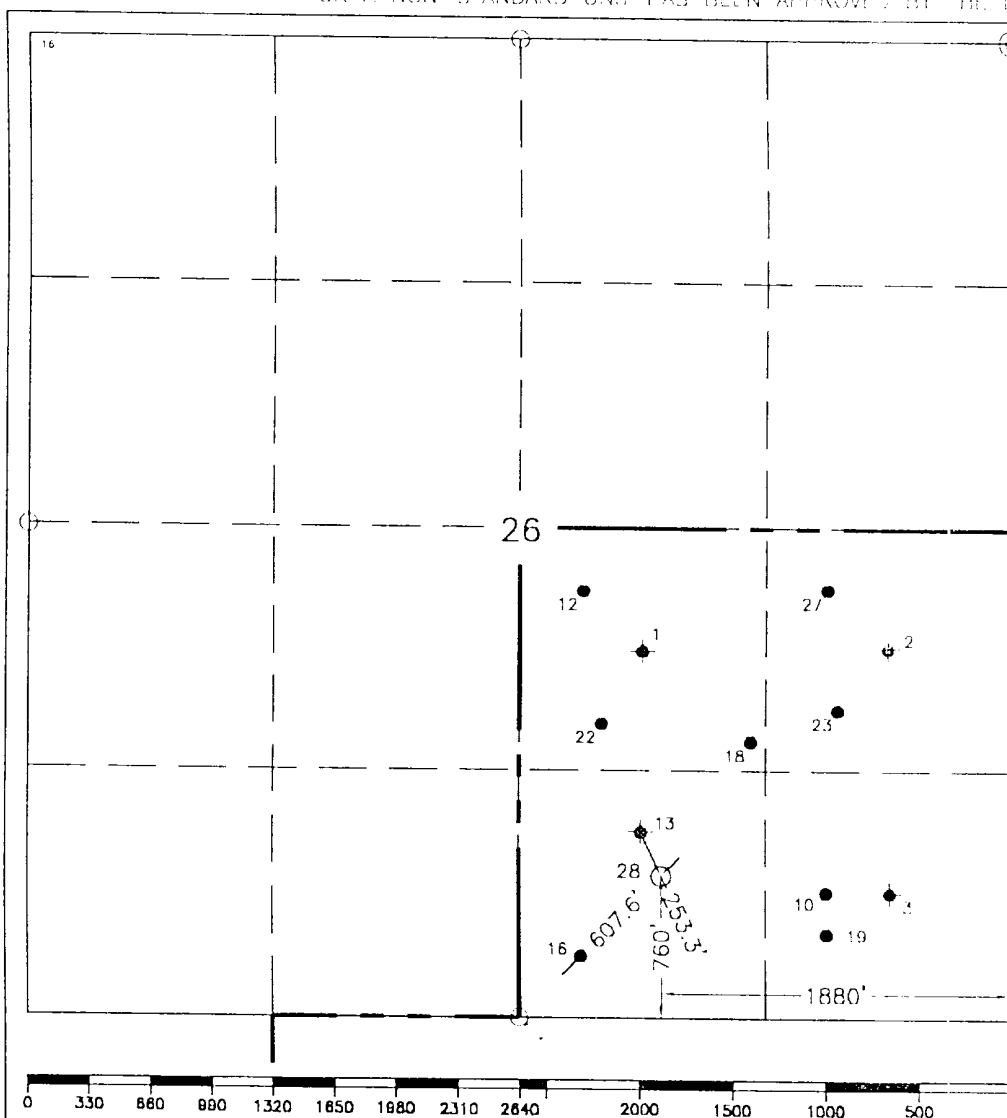
State Lease-4 copies
Fee Lease-3 copies

☐ AMENDED REPORT

WELL LOCATION AND ACREAGE DEDICATION PLAT

1. AP Number		2. Pool Code		3. Pool Name Grayburg, San Andres						
4. Property Code		5. Property Name C. C. Fristoe "B" Federal NCT--2							6. Well Number 28	
7. OGRID No. 22351		8. Operator Name TEXACO EXPLORATION & PRODUCTION, INC.							9. Elevation 3172'	
10. Surface Location										
11. U/I or lot no. 0	Section 26	Township 24--S	Range 37--E	12. Lot Idn	Feet from the 760'	North/South line South	Feet from the 1880'	East/West line East	13. County Lea	
14. Bottom Hole Location If Different From Surface										
15. U/I or lot no.	Section	Township	Range	16. Lot Idn	Feet from the	North/South line	Feet from the	East/West line	17. County	
18. Dedicated Acres 40		19. Joint or unit		20. Consolidation Code		21. Order No.				

NO ALLOWABLE WILL BE ASSIGNED TO THIS COMPLETION UNTIL ALL INTERESTS HAVE BEEN CONSOLIDATED OR A NON-STANDARD UNIT HAS BEEN APPROVED BY THE DIVISION.



OPERATOR CERTIFICATION	
I hereby certify that the information contained herein is true and complete to the best of my knowledge and belief.	
Signature	<i>J. Denise Leake</i>
Printed Name	J. DENISE LEAKE
Position	<i>Regulatory Specialist</i>
Company	Texaco Expl. & Prod., Inc.
Date	May 20, 2002
1 st SURVEYOR CERTIFICATION	
I hereby certify that the well location shown on this plat was plotted from field notes of actual surveys made by me or under my supervision, and that the same is true and correct to the best of my knowledge and belief.	
Date Surveyed	May 16, 2002
Signature & Seal of Professional Surveyor	<i>John S. Piper</i>
Certificate No.	7254 John S. Piper
Sheet	1 of 1

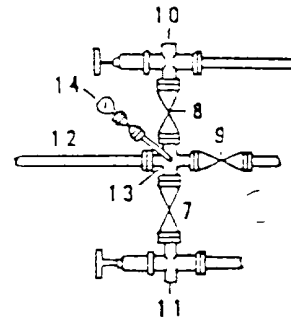
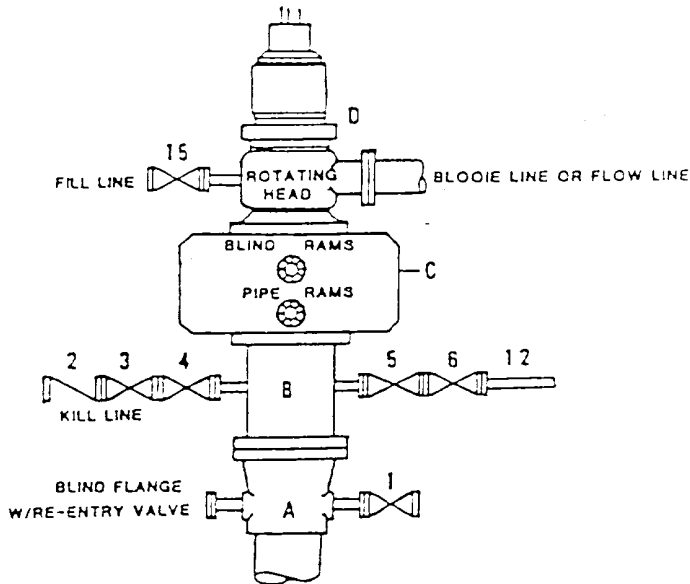
○ = Staked Location ● = Producing Well ↗ = Injection Well ♡ = Water Supply Well ⊛ = Plugged & Abandon Well
 ⊙ = Found Section Corner, 2 or 3" Iron Pipe & GLO B.C. ○ = Found 1/4 Section Corner, 1" Iron Pipe & GLO B.C.

ADDITIONAL INFORMATION ON THE LOCATION

State Plane Coordinates		Easting 913242.25 (1927=872054.74)	
Northing 432463.11 (1927=432405.85)		Longitude 103°07'52.451" (1927=103°07'50.804")	
Latitude 32°10'59.541" (1927=32°10'59.099")	Zone North American Datum	Combined Grid Factor	Coordinate File
East 1983		0.99991578	Erwin_83
Drawing File	Field Book		
Fris_B28.dwg	Leg Co. FB. 20. Pg. 76-78		

DRILLING CONTROL
CONDITION II-B 3000 WP
FOR AIR DRILLING OR
WHERE NITROGEN OR AIR BLOWS ARE EXPECTED

H₂S TRIM REQUIRED
 YES _____ NO X



DRILLING CONTROL

MATERIAL LIST - CONDITION II - B

- A Texaco Wellhead
- B 3000# W.P. drilling spool with a 2" minimum flanged outlet for kill line and 3" minimum flanged outlet for choke line.
- C 3000# W.P. Dual ram type preventer, hydraulic operated with 1" steel, 3000# W.P. control lines (where sub-structure height is adequate, 2 - 3000# W.P. single ram type preventers may be utilized).
- D Rotating Head with fill up outlet and extended Bloode Line.
- 1,3,4, 2" minimum 3000# W.P. flanged full opening steel gate valve, or Halliburton Lo Torc Plug Valve.
- 5 2" minimum 3000# W.P. back pressure valve.
- 6,8,9 3" minimum 3000# W.P. flanged full opening steel gate valve, or Halliburton Lo Torc Plug Valve.
- 10 2" minimum schedule 80, Grade "B", seamless line pipe.
- 13 2" minimum x 3" minimum 3000# W.P. flanged cross.
- 10,11 2" minimum 3000# W.P. adjustable choke bodies.
- 14 Cameron Mud Gauge or equivalent (location optional in choke line).
- 15 2" minimum 3000# W.P. flanged or threaded full opening steel gate valve, or Halliburton Lo Torc Plug Valve.



TEXACO, INC.
 MIDLAND DIVISION
 MIDLAND, TEXAS



SCALE	DATE	EST. NO.	DRG. NO.
DRAWN BY			
CHECKED BY			
APPROVED BY			

EXHIBIT C

HYDROGEN SULFIDE DRILLING OPERATIONS PLAN

C. C. FRISTOE "B" FEDERAL NCT-2 WELL NO. 28

TRAINING:

Every person involved in the wellsite operation will be informed of the characteristics of hydrogen sulfide, its danger, safe procedures to be used when it is encountered, use of detection equipment, use of protective breathing equipment, and first aid procedures for regular rig personnel.

On site training will be provided by ChevronTexaco prior to reaching Order 6 compliance depth. The ChevronTexaco drilling supervisor is responsible for insuring all persons working on location have been provided training.

EXHIBIT A

Topographic map of location and surrounding area.

EXHIBIT B

The wellsite layout contains the following information:

- Drill rig orientation
- Prevailing wind direction
- Location of all briefing areas
- Location of access road
- Location of flare line
- Location of windsocks
- Location of H2S Safety Trailer

PROTECTIVE EQUIPMENT:

4 – 30 minute SCBA's: 2 located at each Briefing Station. An additional SCBA will be located at the Tool Pusher's trailer, if used.

5 – 5 minute escape packs will be located in the Dog House.

Means of communication while using protective equipment will be hand signals.

H2S SENSORS:

H2S sensors will be located at (1) Shale Shaker (2) Rotating Head and (3) Rig floor.

A light will be located on the rig floor. It will be set to go off at 10 PPM. It will be visible from anywhere on the location.

A siren will be located on the rig floor. It will be set to go off at 15 PPM.

ChevronTexaco Drilling Supervisor will maintain a portable H2S monitor.

MUD PROGRAM:

A fresh water/Brine system will be used. Ph will be maintained at 10 or higher if H2S is encountered. Sufficient quantities of H2S scavenger will be on location for use as required.

Drilling will be through an on site gas separator to separate gas from the drilling fluid with gas vented down a flare line equipped with an igniter.

METALLURGY:

All wellheads, trees, BOP's, rotating heads, choke manifolds and piping will be constructed/trimmed with materials suitable for H2S service.

All casing and tubing will be no greater than 80000 psi yield strength and no greater than a Rockwell C-22 hardness.

OTHER REQUIREMENTS OF ORDER 6

The flare line will be equipped with a propane ignition.

The flare gun and flares will be located in the H2S Safety Trailer.

Communications for the location will be by Rig Telephone.

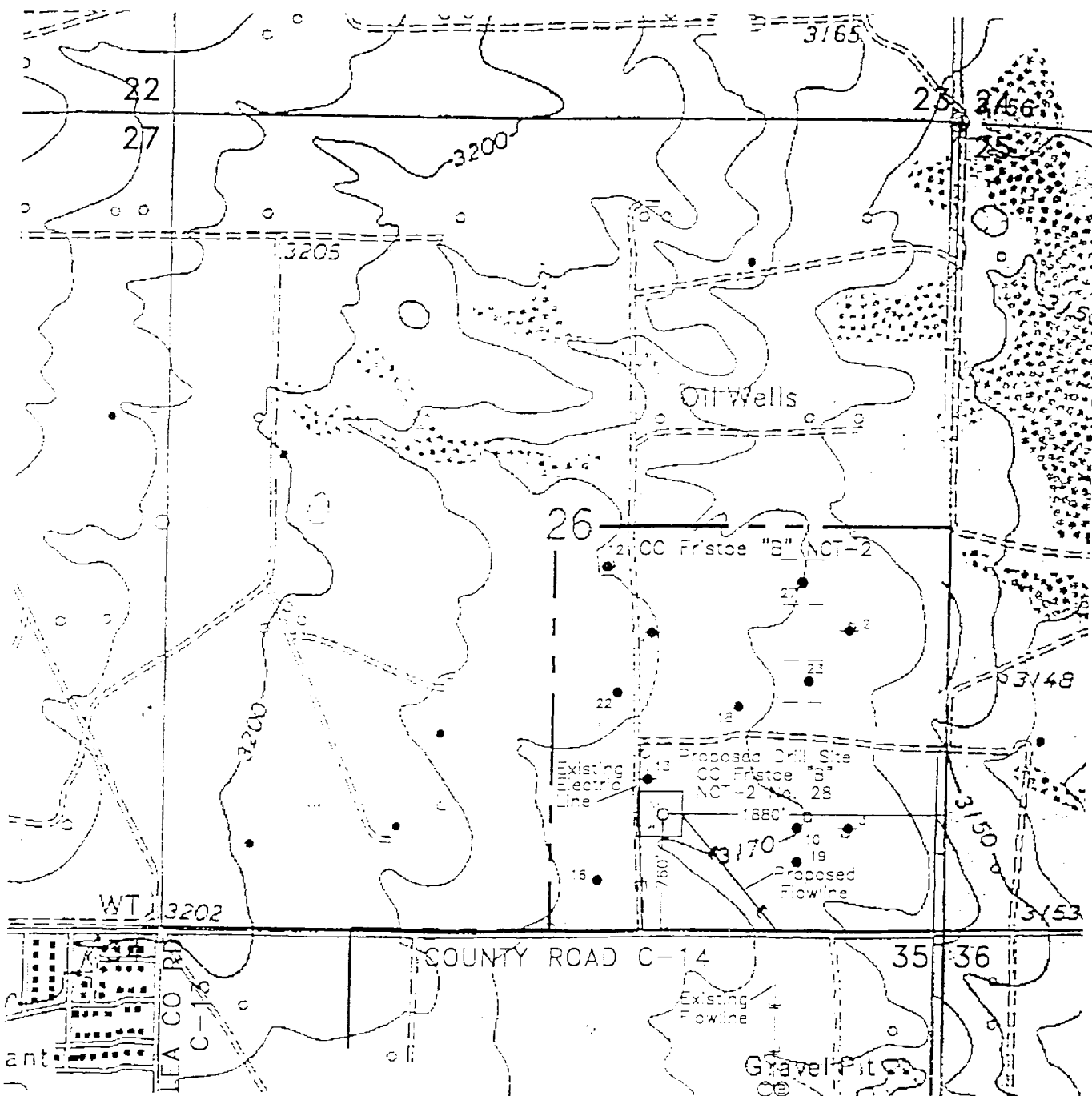
Wind direction indicators will be on the rig floor and at one briefing station with at least one visible from all points on the location.

Caution/danger signs and flags will be maintained at all entrances into the location.

An automatic remote-controlled choke will not be used. We will have installed and tested two manual, H2S trimmed, chokes.

WELL TESTING:

No DST's are planned.



LEGEND OF SYMBOLS

- = Access Road (Yellow)
- = Access Road on Lease (Purple)
- = Resource Road on State Land (Blue)
- = Resource Road on Private Land (Pink)
- = Resource Road on Federal Land (Brown)
- = Proposed Resource Road (Red)
- = Proposed Electric Line (Orange)
- = Proposed Production Flow Line (Green)
- o = Staked Well Location
- o = Producing Well Location
- o = Water Injection Well
- o = Found 1" Iron Pipe with Brass Cap
- o = Found 2" or 3" Iron Pipe with Brass Cap
- = Unit or Lease Boundary

EXHIBIT "A" ACCESS ROAD AND FACILITIES MAP

TEXACO EXPLORATION AND PRODUCTION INC.

C.C. FRISTOE "B" FEDERAL NCT-2 NO. 28
Located 760' FSL & 1880' FEL, Section 26,
T-24-S, R-37-E, NMPM, Lea County, NM

Drawn by: Gene Rodriguez

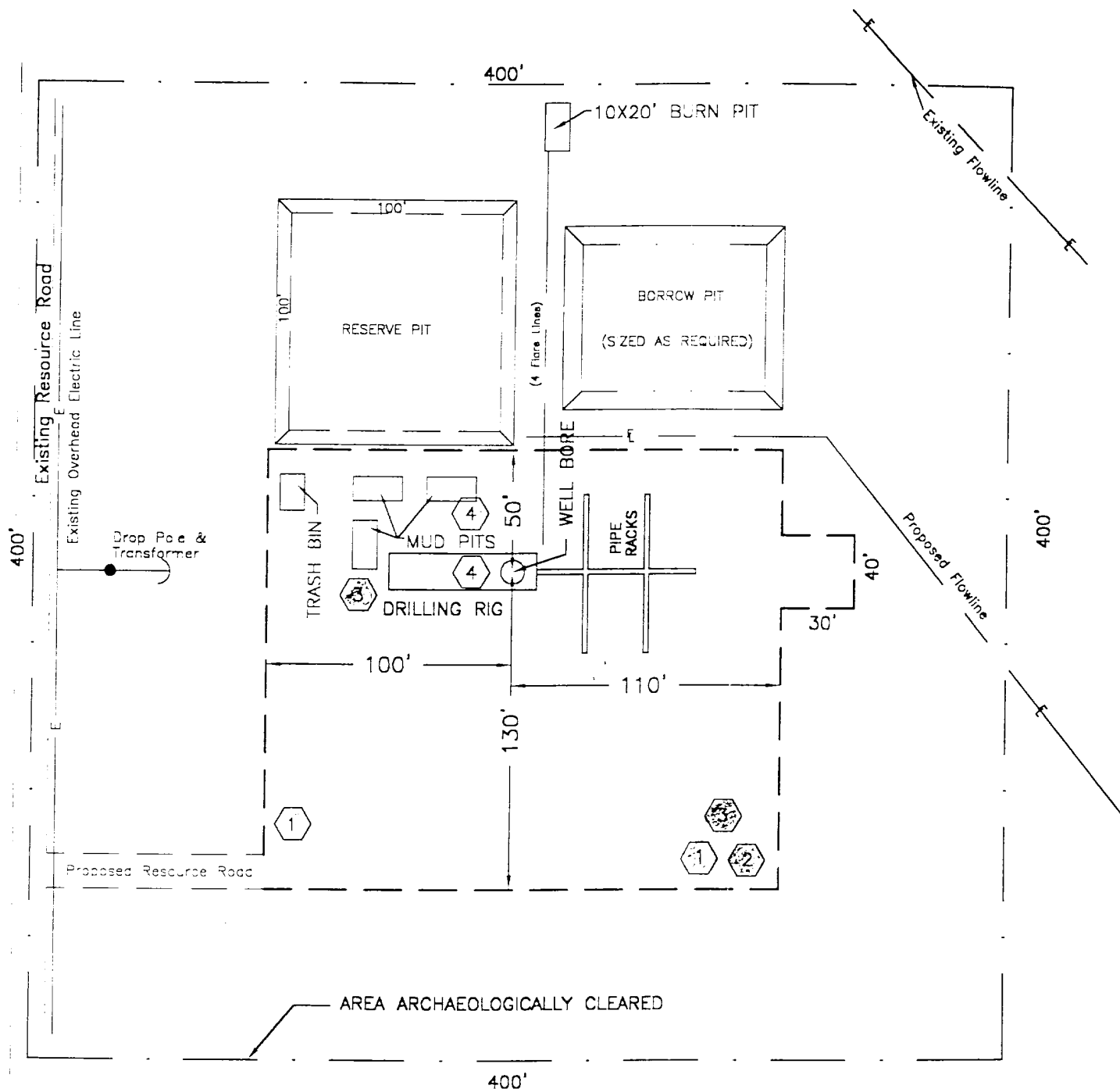
Scale: 1" = 1000'

Date: May 17, 2002

Randy Shannon

Checked by: J. S. Piper

Drawing File: Fris_b28A.Dwg



H₂S DRILLING OPERATION PLAN



Briefing Station



H₂S Safety Trailer



Windsocks



H₂S Detectors, Shale Shaker,
Rotating Head,
Rig Floor

Prevailing Wind from the South

EXHIBIT "B" DRILLING RIG LAYOUT

TEXACO EXPLORATION AND PRODUCTION INC.

C.C. FRISTOE "B" FEDERAL NCT-2 NO. 28
Located 760' FSL & 1880' FEL, Section 26,
T-24-S, R-37-E, NMPM, Lea County, NM

Drawn by: Gene M. Rodriguez

Scale: 1" = 60'

Date: May 17, 2002

Randy Shannon

Checked by: J. S. Pifer

Drawing File: Fris_B28B.Dwg

DISTRICT I
P.O. Box 1950, Hobbs, NM 88240

DISTRICT II
P.O. Drawer 102, Artesia, NM 88210

DISTRICT III
1000 Rio Brazos Rd., Aztec, NM 87410

DISTRICT IV
P.O. Box 2088, Santa Fe, NM 87504-2088

State of New Mexico
Energy, Minerals and Natural Resources Department

OIL CONSERVATION DIVISION

PO Box 2088
Santa Fe, NM 87504-2088

Form C-102
Revised February 10, 1994

Instructions on back

Submit to Appropriate District Office

State Lease-4 copies
Fee Lease-3 copies

WELL LOCATION AND ACREAGE DEDICATION PLAT

☐ AMENDED REPORT

1 API Number		2 Pool Code		3 Pool Name Grayburg, San Andres					
4 Property Code		5 Property Name C. C. Fristoe "B" Federal NCT-2						6 Well Number 28	
7 OGRD No. 22351		8 Operator Name TEXACO EXPLORATION & PRODUCTION, INC.						9 Elevation 3172'	
10 Surface Location									
11 Loc or lot no. 0	12 Section 26	13 Township 24-S	14 Range 37-E	15 Lat Idn	16 Feet from the 760'	17 North/South line South	18 Feet from the 1880'	19 East/West line East	20 County Lea
21 Bottom Hole Location If Different From Surface									
22 Loc or lot no.	23 Section	24 Township	25 Range	26 Lat Idn	27 Feet from the	28 North/South line	29 Feet from the	30 East/West line	31 County
32 Dedicated Acres 40		33 Unit or inf.		34 Consolidation Code		35 Order No.			

NO ALLOWABLE WELL BE ASSIGNED TO THIS COMPLETION UNTIL ALL INTERESTS HAVE BEEN CONSOLIDATED
OR A NON-STANDARD UNIT HAS BEEN APPROVED BY THE DIVISION.

	36 OPERATOR CERTIFICATION I hereby certify that the information contained herein is true and complete to the best of my knowledge and belief. Signature: <i>J. Denise Leake</i> Printed Name: J. DENISE LEAKE Position: <i>Registry Specialist</i> Company: Texaco Expl. & Prod., Inc. Date: May 20, 2002	
	37 SURVEYOR CERTIFICATION I hereby certify that the well location shown on this plat was plotted from field notes of actual surveys made by me or under my supervision, and that the same is true and correct to the best of my knowledge and belief. Date Surveyed: May 16, 2002 Signature & Seal of Professional Surveyor: <i>John S. Piper</i> Certificate No.: 7254 John S. Piper Sheet: 1 of 1	

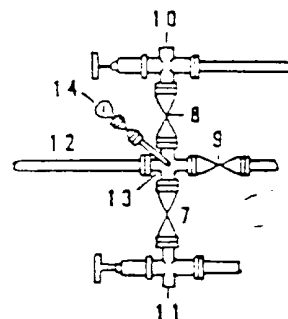
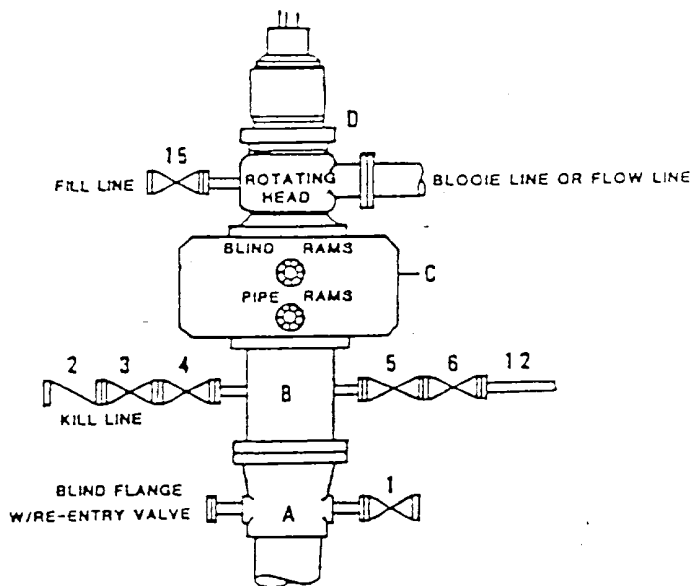
○ = Staked Location • = Producing Well ↗ = Injection Well ✕ = Water Supply Well ◆ = Plugged & Abandon Well
⊙ = Found Section Corner, 2 or 3" Iron Pipe & GLO B.C. ○ = Found 1/4 Section Corner, 1" Iron Pipe & GLO B.C.

ADDITIONAL INFORMATION ON THE LOCATION

State Plane Coordinates			
Northing 432463.11 (1927=432405.85)		Easting 913242.25 (1927=872054.74)	
Latitude 32°10'59.541" (1927=32°10'59.099")		Longitude 103°07'52.451" (1927=103°07'50.804")	
Zone North American Datum		Combined Grid Factor	Coordinate File
East 1983		0.99991578	Erwin_83
Drawing File		Field Book	
Fris B28.dwg		Log Co. FR 20 D = 70 70	

**DRILLING CONTROL
CONDITION II-B 3000 WP
FOR AIR DRILLING OR
WHERE NITROGEN OR AIR BLOWS ARE EXPECTED**

H₂S TRIM REQUIRED
YES _____ NO X



DRILLING CONTROL

MATERIAL LIST - CONDITION II - B

- | | |
|----------------|--|
| A | Texaco Wellhead |
| B | 3000# W.P. drilling spool with a 2" minimum flanged outlet for kill line and 3" minimum flanged outlet for choke line. |
| C | 3000# W.P. Dual ram type preventer, hydraulic operated with 1" steel, 3000# W.P. control lines (where substructure height is adequate, 2 - 3000# W.P. single ram type preventers may be utilized). |
| D | Rotating Head with fill up outlet and extended Blooie Line. |
| 1,3,4,
7,8, | 2" minimum 3000# W.P. flanged full opening steel gate valve, or Halliburton Lo Torc Plug valve. |
| 2 | 2" minimum 3000# W.P. back pressure valve. |
| 5,6,9 | 3" minimum 3000# W.P. flanged full opening steel gate valve, or Halliburton Lo Torc Plug valve. |
| 12 | 3" minimum schedule 80, Grade "B", seamless line pipe. |
| 13 | 2" minimum x 3" minimum 3000# W.P. flanged cross. |
| 10,11 | 2" minimum 3000# W.P. adjustable choke bodies. |
| 14 | Cameron Mud Gauge or equivalent (location optional in choke line). |
| 15 | 2" minimum 3000# W.P. flanged or threaded full opening steel gate valve, or Halliburton Lo Torc Plug valve. |



TEXACO, INC.
MIDLAND DIVISION
MIDLAND, TEXAS



SCALE	DATE	EST NO	DRG NO
DRAWN BY			
CHECKED BY			
APPROVED BY			

EXHIBIT C

**TITLE PAGE/ABSTRACT/
NEGATIVE SITE REPORT
BLM/ RDO 1/95
ROSWELL DISTRICT**

1. BLM Report No.	2. (ACCEPTED) (REJECTED)	3. NMCRIS No. 78978		
4. Title of Report (Project Title) A Class III Survey of C.C. Fristoe Unit B FED NCT-2 Nos. 28 and 29, Lea County, New Mexico		5. Project Date(s) May 16, 2002		
		6. Report Date May 18, 2002		
7. Consultant Name & Address Direct Charge: Deni Seymour Address: Lone Mountain 2625 Pennsylvania NE, Suite 2000 Albuquerque, NM 87110 Authors Name: Douglas H. M. Boggess Field Personnel Names: Douglas H. M. Boggess Phone: (505) 881-0011		8. Permit No. 122-2920-02-NN 9. Consultant Report No. LMAS #722		
10. Sponsor Name and Address Indiv. Responsible: Hollis Cox Name: Chevron Texaco Address: 15 Smith Road, Midland, TX 79705 Phone: 505-390-0000		11. For BLM Use only. 12. ACREAGE Total No. of Acres Surveyed: 14.14 ac Per Surface Federal: State: Private: 14.14 ac (subsurface mineral rights BLM)		
13. Location (Maps Attached if negative survey)				
<table border="0"> <tr> <td style="vertical-align: top;"> a. State: New Mexico b. County: Lea c. BLM FO: Carlsbad d. Nearest City or Town: Jal, New Mexico </td> <td style="vertical-align: top; padding-left: 20px;"> e. Location T 24S R 37E Sec 26 NW ¼, SW ¼, SE ¼; SW ¼, SW ¼, SE ¼ Sec 35 W ¼, NE ¼, NE ¼ Well Pad Footage: 400' x 400' (x2) f. 7.5' Map Name(s) and Code Number (s): Jal NW, New Mexico 32103-B2-TF-024-00 g. Area Block - Impact: 400' x 400' (x2) Surveyed: 400' x 400' (x2) Linear - Impact: 50' x 2960' Surveyed: 100' x 2960' </td> </tr> </table>			a. State: New Mexico b. County: Lea c. BLM FO: Carlsbad d. Nearest City or Town: Jal, New Mexico	e. Location T 24S R 37E Sec 26 NW ¼, SW ¼, SE ¼; SW ¼, SW ¼, SE ¼ Sec 35 W ¼, NE ¼, NE ¼ Well Pad Footage: 400' x 400' (x2) f. 7.5' Map Name(s) and Code Number (s): Jal NW, New Mexico 32103-B2-TF-024-00 g. Area Block - Impact: 400' x 400' (x2) Surveyed: 400' x 400' (x2) Linear - Impact: 50' x 2960' Surveyed: 100' x 2960'
a. State: New Mexico b. County: Lea c. BLM FO: Carlsbad d. Nearest City or Town: Jal, New Mexico	e. Location T 24S R 37E Sec 26 NW ¼, SW ¼, SE ¼; SW ¼, SW ¼, SE ¼ Sec 35 W ¼, NE ¼, NE ¼ Well Pad Footage: 400' x 400' (x2) f. 7.5' Map Name(s) and Code Number (s): Jal NW, New Mexico 32103-B2-TF-024-00 g. Area Block - Impact: 400' x 400' (x2) Surveyed: 400' x 400' (x2) Linear - Impact: 50' x 2960' Surveyed: 100' x 2960'			

14. a. Records Search

Location: ARMS and Carlsbad Field Office-BLM

Date: May 13, 2002 and May 16, 2002

List by LA# all sites within 0.25 miles of the project: No sites

(Those sites within 500' are to be shown on the project map)

Previous BLM projects: 01-539, 00-925, 00-136

b. Description of Undertaking: The undertaking involves the construction of two wellpads and two flowlines. Existing caliche-capped roads and powerlines will provide access and electrical power for the proposed sites

c. Environmental Setting (NRCS soil designation; vegetative community; etc.): The sites occupy a flat area bisected by shallow drainages. Vegetation is consistent with the Chihuahuan Desert Scrub Community and includes various grasses, mesquite, and prickly pear cactus. Predicted soils for the area are members of the Simona-Tonuco Association. Both proposed wellpads and substantial portions of the proposed flowlines have been disturbed by powerlines, aboveground and buried pipelines, shallow excavations involved with pipeline maintenance and construction activity, and previous wellpad construction episodes.

d. Field Methods

Transect Intervals: 15 m

Crew Size: 1

Time in Field: 4 hours

Collections: None

15. Cultural Resource Findings

Identification and description (Location shown on project map): The survey did not locate any prehistoric or historic cultural resources.

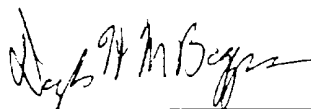
16. Management Summary (Recommendations):

The proposed wellpads and flowlines will have no affect on any cultural resources. Additional studies are not recommended.

I certify that the information provided above is correct and accurate and meets all appreciable BLM standards.

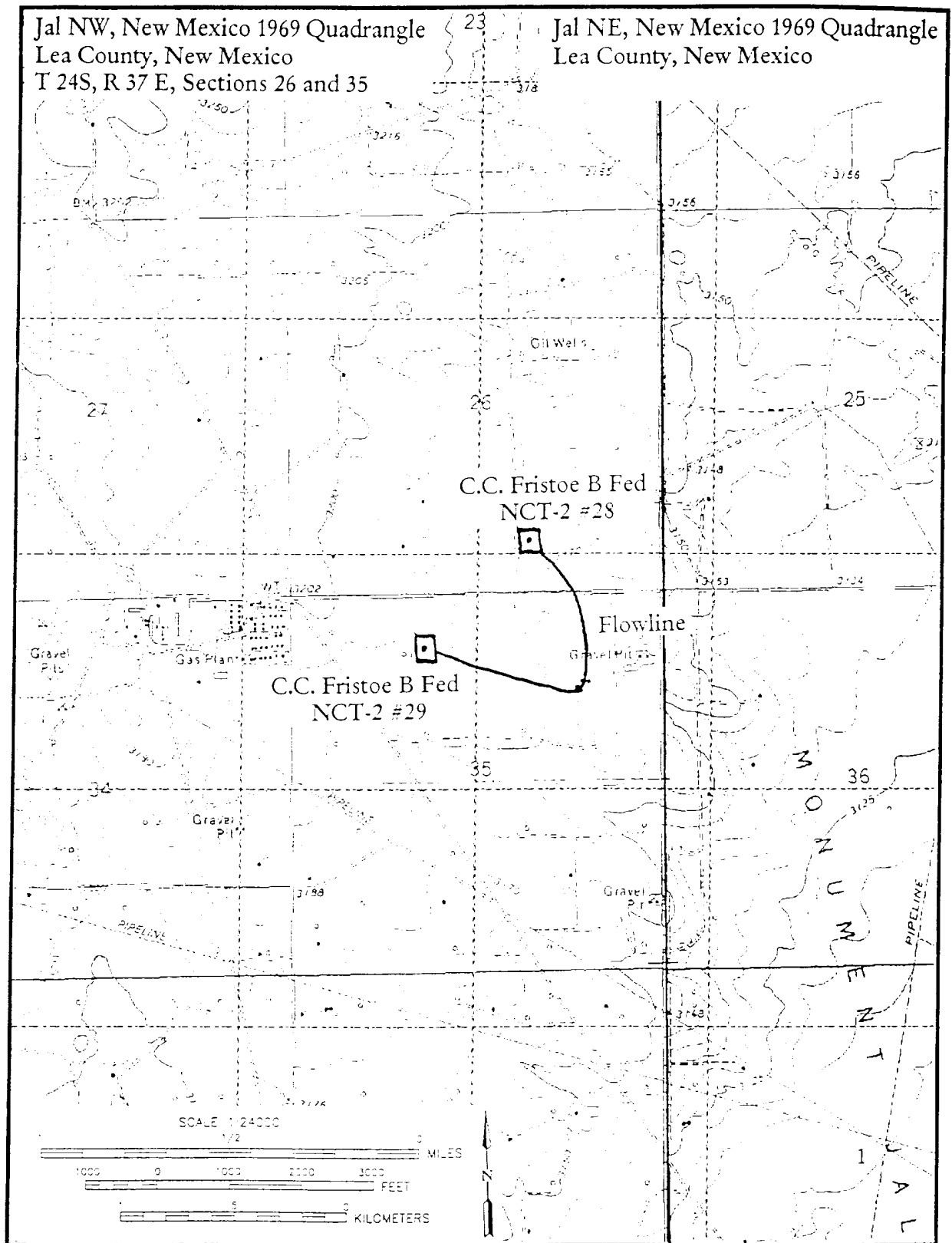
Responsible Archaeologist -

Signature:



Date:

5-20-02



OPERATOR – LANDOWNER AGREEMENT

COMPANY: TEXACO EXPLORATION AND PRODUCTION INC.

PROPOSED WELL: C.C. FRISTOE 'B' FEDERAL NCT-2 #28
FEDERAL LEASE NO. NM-14218

This is to advise that Texaco Exploration and Production Inc. has an agreement with:


Bill and Elena Grobe, P. O. Box G, Jal, New Mexico 88252

The surface owner, concerning entry and surface restoration after completion of drilling operations at the above described well.

After abandonment of the well, all pits will be filled and leveled, all equipment and trash will be removed from well site. No other requirements were made concerning restoration of the well site.

6-05-02

Date



J. Denise Leake
Regulatory and Permit Specialist
Midland, Texas

DISTRICT I
P. O. Box 1980, Hobbs, NM 88240

DISTRICT II
P. O. Drawer 90, Artesia, NM 88210

DISTRICT IF
1000 Rio Brazos Rd., Aztec, NM 87410

DISTRICT IV
P. O. Box 2088, Santa Fe, NM 87504-2088

State of New Mexico
Energy, Minerals and Natural Resources Department

OIL CONSERVATION DIVISION
PO Box 2088
Santa Fe, NM 87504-2088

Form C-102
Revised February 10, 1994
Instructions on back

Submit to Appropriate District Office

State Lease-4 copies
Fee Lease-3 copies

☐ AMENDED REPORT

WELL LOCATION AND ACREAGE DEDICATION PLAT

1 AP# Number 30-025-35983		2 Pool Code 37240		3 Well Name Langlie Mattix, 7P = Qh. Gradyburg, San Andres	
4 Property Code 29917		5 Property Name C. C. Fristoe "B" Federal NCT-2			
6 OGRID No. 2235+4323		7 Operator Name Chevron U.S.A. Inc. TEXACO EXPLORATION & PRODUCTION, INC.			
8 Well Number 28		9 Elevation 3172'			

10 Surface Location									
11 Well or lot no. 0	12 Section 26	13 Township 24-S	14 Range 37-E	15 Lot Idn	16 Feet from the 760'	17 North/South line South	18 Feet from the 1880'	19 East/West line East	20 County Lea

21 Bottom Hole Location if Different From Surface									
22 Well or lot no.	23 Section	24 Township	25 Range	26 Lot Idn	27 Feet from the	28 North/South line	29 Feet from the	30 East/West line	31 County
32 Dedicated Acres 40		33 Joint or Infill		34 Consolidation Code		35 Order No.			

NO ALLOWABLE WILL BE ASSIGNED TO THIS COMPLETION UNTIL ALL INTERESTS HAVE BEEN CONSOLIDATED
OR A NON-STANDARD UNIT HAS BEEN APPROVED BY THE DIVISION.

	36 OPERATOR CERTIFICATION I hereby certify that the information contained herein is true and complete to the best of my knowledge and belief. Signature: J. Denise Leake Printed Name: J. DENISE Leake Position: Regulatory Specialist Company: Texaco Expl. & Prod., Inc. Date: May 20, 2002	
	37 SURVEYOR CERTIFICATION I hereby certify that the well location shown on this plat was plotted from field notes of actual surveys made by me or under my supervision, and that the same is true and correct to the best of my knowledge and belief. Date Surveyed: May 16, 2002 Signature & Seal of Professional Surveyor: [Signature] Certificate No.: 7254 John S. Piper	
	Sheet 1 of 1	

○ = Staked Location • = Producing Well / = Injection Well ◇ = Water Supply Well ◆ = Plugged & Abandon Well
⊙ = Found Section Corner, 2 or 3" Iron Pipe & GLO B.C. ○ = Found 1/4 Section Corner, 1" Iron Pipe & GLO B.C.

ADDITIONAL INFORMATION ON THE LOCATION

State Plane Coordinates Northing 432463.11 (1927=432405.85) Latitude 32°10'59.541" (1927=32°10'59.099") Zone North American Datum East 1983 Drawing File		Easting 913242.25 (1927=872054.74) Longitude 103°07'52.451" (1927=103°07'50.804") Combined Grid Factor 0.99991578 Field Book		Coordinate File Erwin_83	
---	--	---	--	-----------------------------	--