

UNITED STATES
DEPARTMENT OF THE INTERIOR
GEOLOGICAL SURVEY

APPLICATION FOR PERMIT TO DRILL, DEEPEN, OR PLUG BACK

1a. TYPE OF WORK
DRILL ☒ DEEPEN ☐ PLUG BACK ☐

b. TYPE OF WELL
OIL WELL ☒ GAS WELL ☐ OTHER ☐
SINGLE ZONE ☒ MULTIPLE ZONE ☐

2. NAME OF OPERATOR
Humble Oil & Refining Company

3. ADDRESS OF OPERATOR
P. O. Box 1600, Midland, Texas 79701

4. LOCATION OF WELL (Report location clearly and in accordance with any State requirements.)
At surface 660' FSL & 1,980' FEL

At proposed prod. zone
Same

14. DISTANCE IN MILES AND DIRECTION FROM NEAREST TOWN OR POST OFFICE*
36 miles East Northeast of Roswell, New Mexico

15. DISTANCE FROM PROPOSED*
LOCATION TO NEAREST PROPERTY OR LEASE LINE, FT.
(Also to nearest drlg. unit line, if any) 1,000'
660'

18. DISTANCE FROM PROPOSED LOCATION*
TO NEAREST WELL, DRILLING, COMPLETED, OR APPLIED FOR, ON THIS LEASE, FT. 2,640'

21. ELEVATIONS (Show whether DF, RT, GR, etc.)
To be filed later

23. PROPOSED CASING AND CEMENTING PROGRAM

SIZE OF HOLE	SIZE OF CASING	WEIGHT PER FOOT	SETTING DEPTH	QUANTITY OF CEMENT
11"	8-5/8"	24, 32#	1,480'	600 sacks
7-7/8"	5-1/2"	14, 15.5 & 17#	7,450'	500 sacks

5. LEASE DESIGNATION AND SERIAL NO.
Federal NM 055564

6. IF INDIAN, ALLOTTEE OR TRIBE NAME

7. UNIT AGREEMENT NAME

8. FARM OR LEASE NAME
Isler-Federal

9. WELL NO.
4

10. FIELD AND POOL, OR WILDCAT
Many Gates-Abo

11. SEC., T., R., M., OR BLK. AND SURVEY OR AREA
Sec. 30, T-9-S, R-30-E

12. COUNTY OR PARISH
Chaves

13. STATE
New Mexico

17. NO. OF ACRES ASSIGNED TO THIS WELL
80

20. ROTARY OR CABLE TOOLS
Rotary

22. APPROX. DATE WORK WILL START*
10-25-72 (If approved)

* Circulate to surface using Class "C" Cement.

** Cement back to above San Andres zone at approximately 4,000'.

HOWCO method of cementing to be used.

See "Mud Program", "Development Plan For Surface Use", "Blowout Preventer Equipment" and "Rig Layout" attached.

IN ABOVE SPACE DESCRIBE PROPOSED PROGRAM: If proposal is to deepen or plug back, give data on present productive zone and proposed new productive zone. If proposal is to drill or deepen directionally, give pertinent data on subsurface locations and measured and true vertical depths. Give blowout preventer program, if any.

24. SIGNED A. L. Clemmer TITLE Proration Specialist DATE 10-12-72
D. L. Clemmer
(This space for Federal or State office use)

APPROVED BY 17 1972
CONDITIONS OF APPROVAL, IF ANY:
L. C. BEEKMAN
ACTING DISTRICT ENGINEER

THIS APPROVAL IS RESCINDED IF OPERATIONS ARE NOT COMMENCED WITHIN 3 MONTHS.
EXPIRES JAN 17 1973

*See Instructions On Reverse Side

Humble Lse.No. _____

NEW MEXICO OIL CONSERVATION COMMISSION

State Lse.No. _____

WELL LOCATION AND ACREAGE DEDICATION PLAT

RECEIVED

Form C-102
Revised C-128
Effective 1-1-65Federal Lse.No. NM 055564

All distances must be from the outer boundaries of the Section.

OCT 18 1972

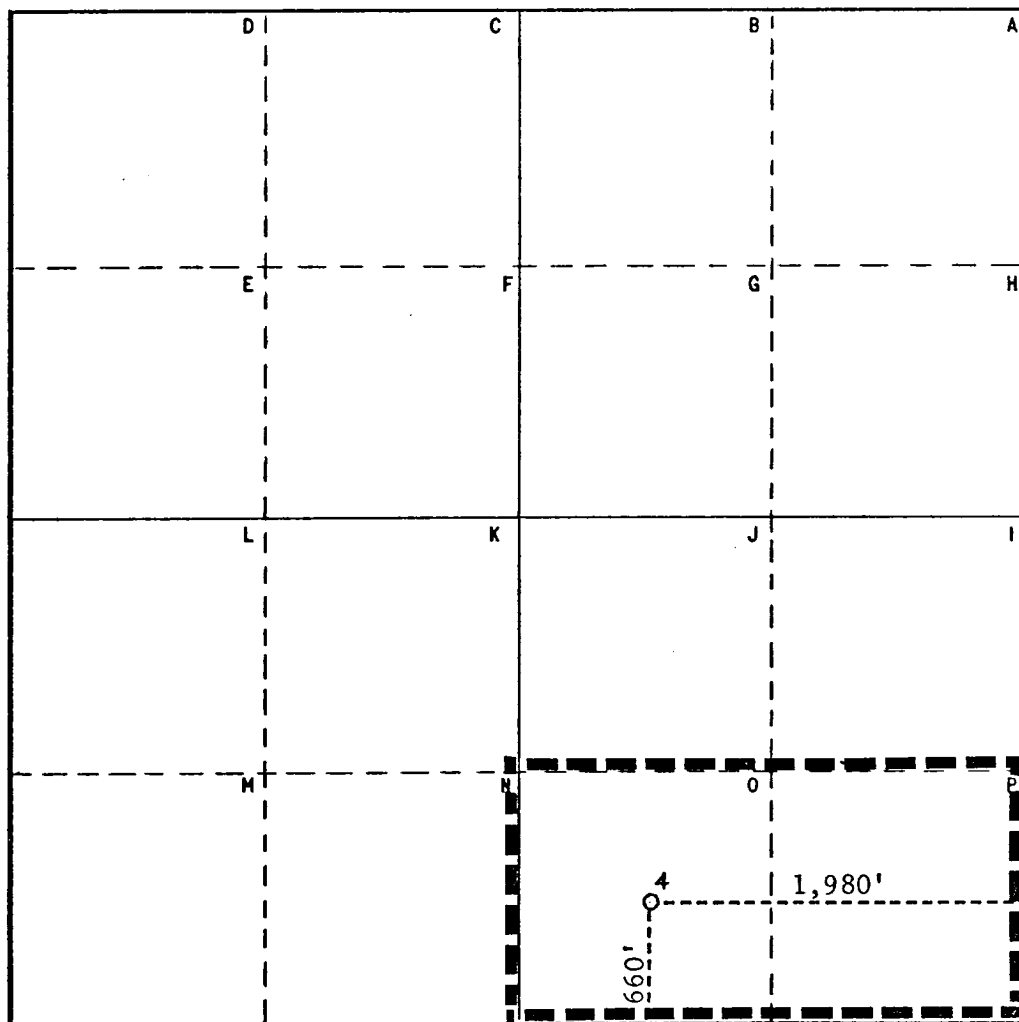
Operator Humble Oil & Refining Co.			Lease Isler - Federal			Well No. 4
Unit Letter "O"	Section 30	Township 9-S	Range 30-E	County O. C. C.		ARTESIA, OFFICE
Actual Footage Location of Well: 660 feet from the South line and 1,980 feet from the East line						
Ground Level Elev.	Producing Formation ABO		Pool Many Gates		Dedicated Acreage: 80 Acres	

1. Outline the acreage dedicated to the subject well by colored pencil or hachure marks on the plat below.
2. If more than one lease is dedicated to the well, outline each and identify the ownership thereof (both as to working interest and royalty).
3. If more than one lease of different ownership is dedicated to the well, have the interests of all owners been consolidated by communitization, unitization, force-pooling, etc?

☐ Yes ☐ No If answer is "yes," type of consolidation _____

If answer is "no," list the owners and tract descriptions which have actually been consolidated. (Use reverse side of this form if necessary.) _____

No allowable will be assigned to the well until all interests have been consolidated (by communitization, unitization, forced-pooling, or otherwise) or until a non-standard unit, eliminating such interests, has been approved by the Commission.



CERTIFICATION

I hereby certify that the information contained herein is true and complete to the best of my knowledge and belief.

Name A. L. Clemmer

Position
Proration Specialist

Company **Humble Oil & Refining Co.**
Box 1600 Midland, Texas

Date
October 11, 1972

I hereby certify that the well location shown on this plat was plotted from field notes of actual surveys made by me or under my supervision, and that the same is true and correct to the best of my knowledge and belief.

Date Surveyed
9-13-72

Registered Professional Engineer
and/or Land Surveyor

H. S. Westerfield

Certificate No.
1382

36 Miles **E-NE** of **Roswell**, New Mexico

C.E. Sec. File No. **A-6713-C**

RECEIVED

OCT 18 1972

O. C. C.
ARTESIA. OFFICE

D. MUD PROGRAM

D. MUD PROGRAM		FUNNEL	MEAS. AT 120°F		WL	SOLIDS	pH	Cl ⁻ (ppm)	MB (#/BBL)
DEPTH INTERVAL (FT.)	WEIGHT TYPE (ppg)	VISC. (Sec/Qt)	PV (cp)	YP (lb/100 Ft. ²)	(cc)	(%)			
0 - 1,480'	Fresh Water or Spud Mud -	gets salty beginning				at 900 feet.			
1,480 - 3,250'	Brine Water 10#	28	-	-	-	--	10.5	190,000	-
*3,250 - 3,500'	Brine Mud 10-10.2	30-45	5-20	4-20	-	10-20	11.0	185,000	5-15
3,500 - 6,100'	Brine Wtr. 10-10.2	28	-	-	-	--	11.0	190,000	-
6,100 - TD	Brine Mud 10-10.2	30-45	5-20	4-20	-	10-20	11.0	185,000	5-20
	w/5% No. 2 Diesel.								

*Mud-Up 3250-3500' for good samples between 3300 and 3500' in middle part of San Andres.
Discontinue use of bentonite between 3500' and 6100' unless "pills or slugs" needed for hole conditions.

NOTE: Do not treat for fluid loss control unless to obtain acceptable cake or upon approval from Drilling Section office.

OCT 18 1972

DEVELOPMENT PLAN FOR SURFACE USE ON ISLER-FEDERAL
AND UNDESIGNATED FEDERAL LEASES

B. C. C.
ARTIFICIAL OFFICE

Attached is a segment of a map in Chaves County, New Mexico showing the location of the proposed development wells which are in the Many Gates Abo Pool. Also attached are the following listed items as requested by the USGS.

1. Existing roads.
2. Planned access to the location.
3. Offsetting Pool wells.
4. Lateral roads to other wells.
5. Location of tank battery and flow line will be furnished at a later date.
6. Water will be hauled in from an off lease source.
7. The drilling contractor will be required to comply with OSHA requirements.
8. No camps are involved.
9. No airstrips are involved.
10. A sketch of the location layout is attached showing the position of the rig, pipe rack and reserve pit, as well as the size of the location.
11. The location will be restored to the satisfaction of the Bureau of Land Management.
12. This area consists of sand dunes with sparse vegetation and the drilling of this well will not adversely affect the environment.
13. API Series 900 Blowout Prevention Equipment will be used with 2000 psi working pressure, tested according to industry standards. (See Equip. Disc. Attached.)

BLA UT PREVENTER SPECIFICATION
EQUIPMENT DESCRIPTION

OCT 18 1972

TYPE II

O. C. C.
ARTESIA, OFFICE

All equipment should be at least 2000 psi WP or higher unless otherwise specified.

1. Bell nipple.
2. Hydril or equivalent bag type preventer.
3. Ram type pressure operated blowout preventer with pipe rams.
4. Flanged spool with one 4-inch and one 2-inch (minimum) outlet.
5. 2-inch (minimum) flanged plug or gate valve.
6. 2-inch by 2-inch by 2-inch (minimum) flanged tee.
7. 4-inch pressure operated gate valve.
8. 4-inch flanged gate or plug valve.
9. Ram type pressure operated blowout preventer with pipe rams.
10. Flanged type casing head with one side outlet (furnished by Humble).
11. 2-inch threaded (or flanged) plug or gate valve (furnished by Humble).
Flanged on 5000# WP, threaded on 3000# WP or less.
12. Needle valve (furnished by Humble).
13. 2-inch nipple (furnished by Humble).
14. Tapped bull plug (furnished by Humble).
15. 4-inch flanged spacer spool.
16. 4-inch by 2-inch by 2-inch by 2-inch flanged cross.
17. 2-inch flanged plug or gate valve.
18. 2-inch flanged adjustable choke.
19. 2-inch threaded flange.
20. 2-inch XXH nipple.
21. 2-inch forged steel 90° Ell.
22. Cameron (or equal.) threaded pressure gage.
23. Threaded flange.

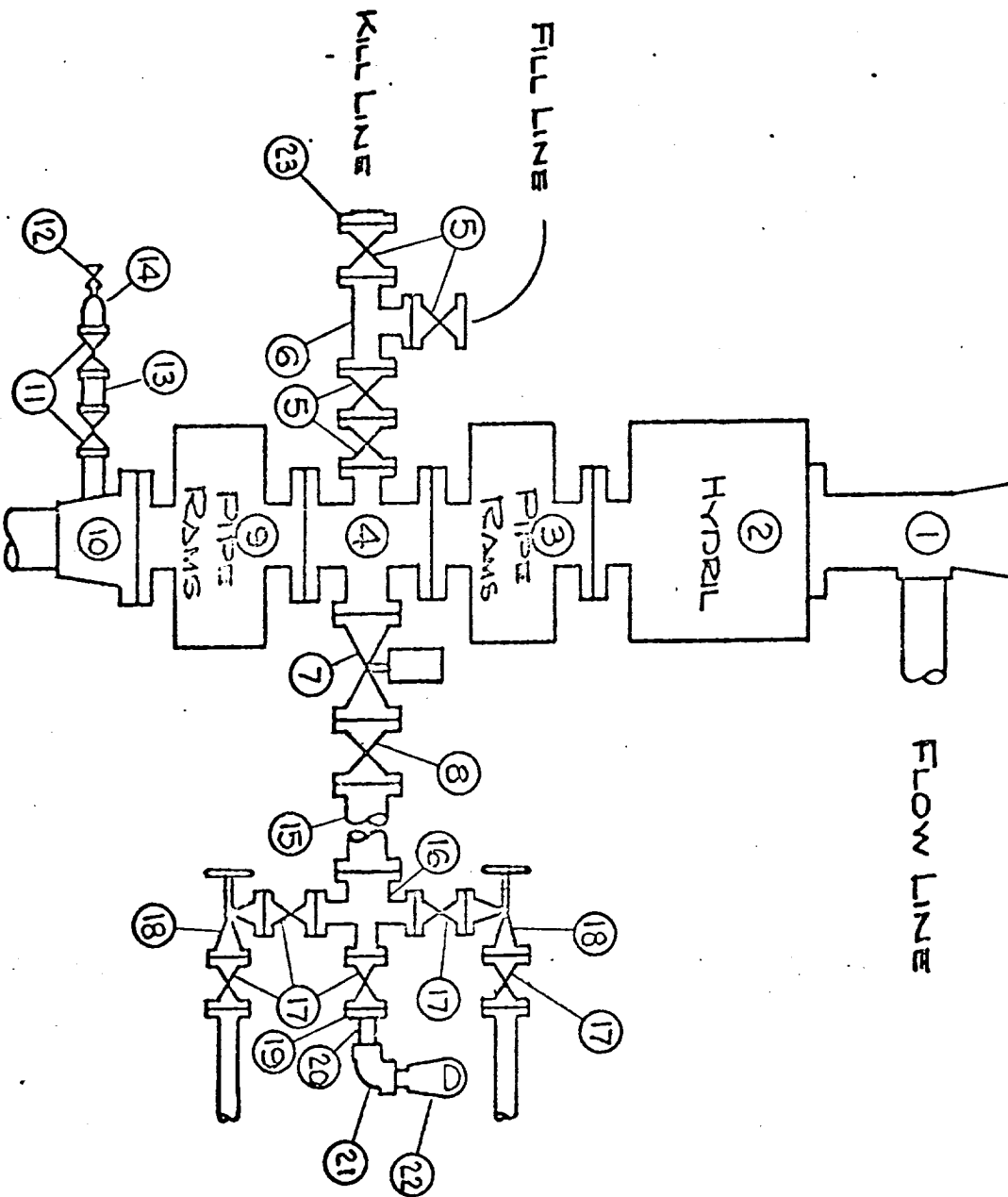
NOTES:

1. Items 3, 4, and 9 may be replaced with double ram type preventer with side outlets between the rams.
2. The two valves next to the stack on the fill and kill line to be closed unless drill string is being pulled.
3. Kill line is for emergency use only. This connection shall not be used for filling.
4. Replacement pipe rams and blind rams shall be on location at all times.
5. Only type U, LWS, and QRC ram type preventers acceptable.

10-1-71

D. C. C.
ARTESIA, OFFICE

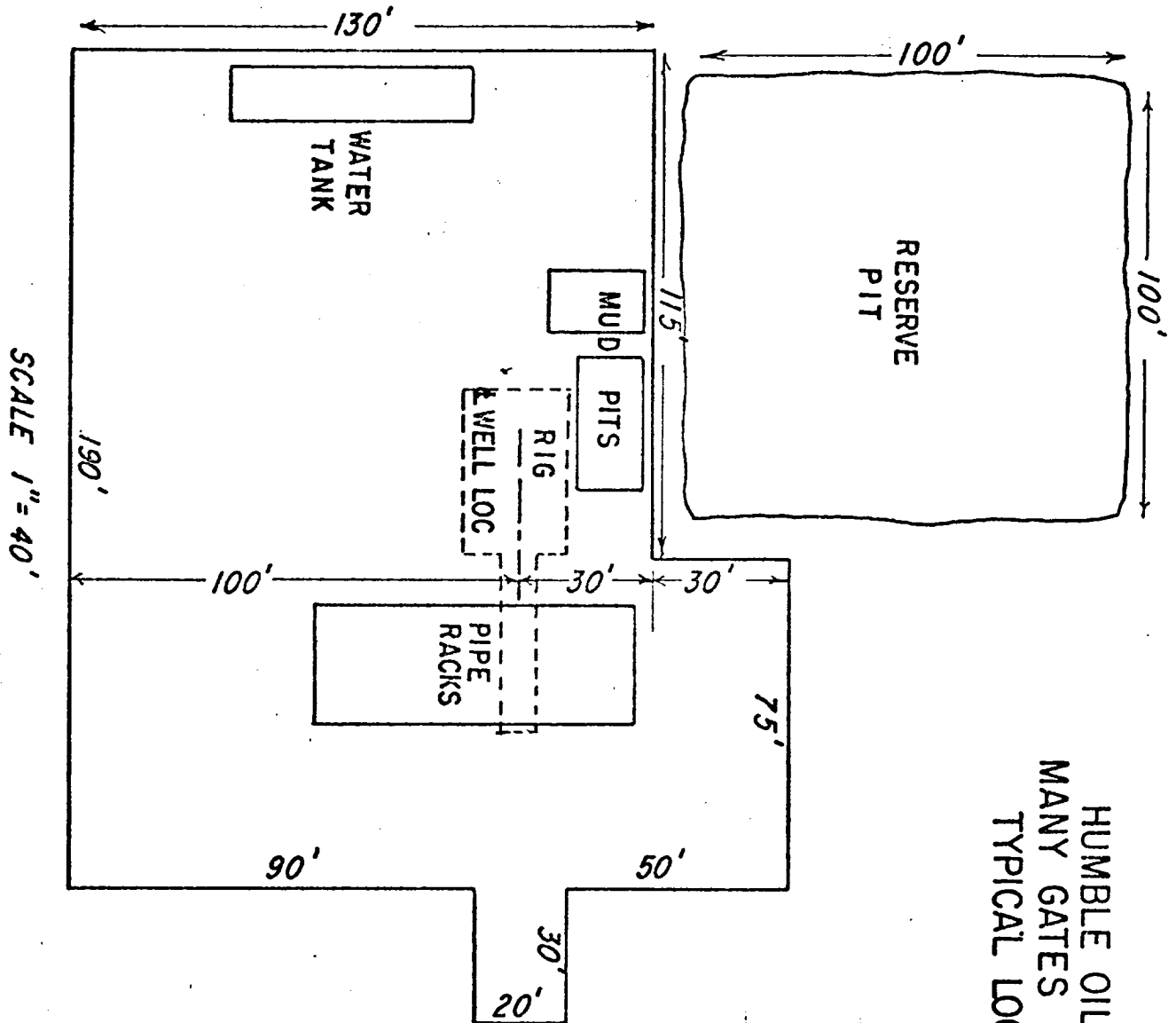
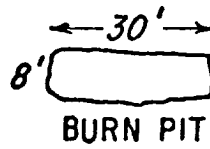
MIDCONTINENT DIVISION
BLOWOUT PREVENTER SPECIFICATION
TYPE II



RECEIVED

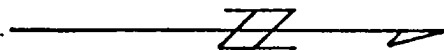
OCT 18 1972

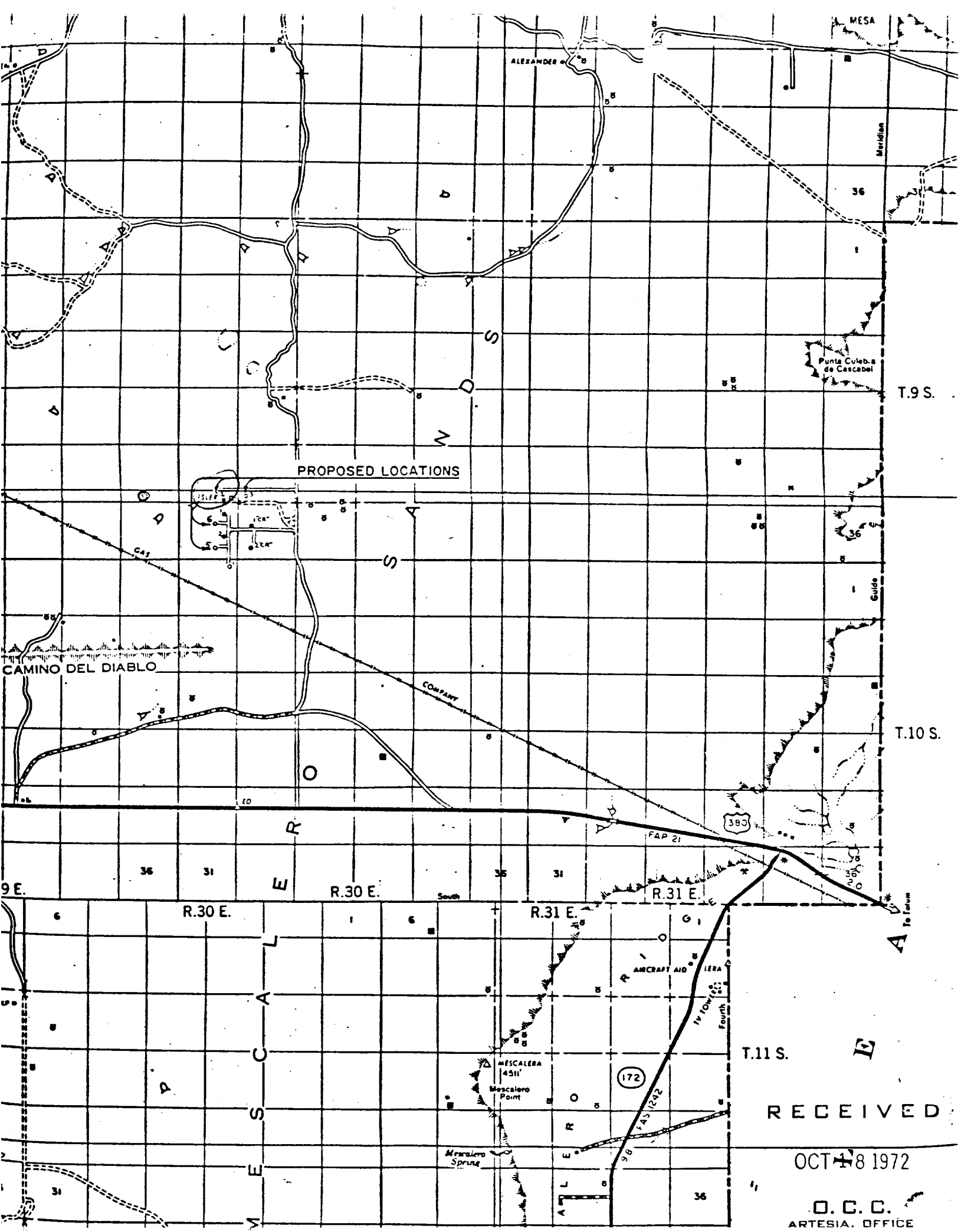
O. C. C.
ARTESIA, OFFICE



SCALE 1" = 40'

HUMBLE OIL & REFINING CO.
MANY GATES ABO POOL WELL
TYPICAL LOCATION LAYOUT





RECEIVED

OCT 18 1972

O.C.C.
ARTESIA OFFICE