

UNITED STATES
DEPARTMENT OF THE INTERIOR
GEOLOGICAL SURVEY(Other instructions on
reverse side)

APPLICATION FOR PERMIT TO DRILL, DEEPEN, OR PLUG BACK

1a. TYPE OF WORK

DRILL ☒DEEPEN ☐PLUG BACK ☐

b. TYPE OF WELL

OIL
WELL ☒GAS
WELL ☐OTHER ☐SINGLE
ZONE ☒MULTIPLE
ZONE ☐

2. NAME OF OPERATOR

Exxon Corporation

3. ADDRESS OF OPERATOR

Box 1600, Midland, Texas 79701

4. LOCATION OF WELL (Report location clearly and in accordance with any State requirements.)*

At surface

660' FSL & 660' FWL

At proposed prod. zone

Same

14. DISTANCE IN MILES AND DIRECTION FROM NEAREST TOWN OR POST OFFICE*

36 miles East Northeast of Roswell, New Mexico

10. DISTANCE FROM PROPOSED*

1,980'

LOCATION TO NEAREST
PROPERTY OR LEASE LINE, FT.
(Also to nearest drlg. unit line, if any)

660'

16. NO. OF ACRES IN LEASE

1,643.52

17. NO. OF ACRES ASSIGNED
TO THIS WELL

80

18. DISTANCE FROM PROPOSED LOCATION*

TO NEAREST WELL, DRILLING, COMPLETED,
OR APPLIED FOR, ON THIS LEASE, FT.

None

19. PROPOSED DEPTH

7,400'

20. ROTARY OR CABLE TOOLS

Rotary

21. ELEVATIONS (Show whether DF, RT, GR, etc.)

To be filed later.

23.

PROPOSED CASING AND CEMENTING PROGRAM

SIZE OF HOLE	SIZE OF CASING	WEIGHT PER FOOT	SETTING DEPTH	QUANTITY OF CEMENT
(1) 11"	8-5/8"	24, J-55	1,480'	600 sacks *
(2) 7-7/8"	4-1/2"	10.5 & 11.6 J-55	7,400'	550 sacks **

(1) New

(2) New & Used

* Circulate to surface using Class "C" Cement.

** Cement back to above San Andres zone at approximately 4,000'.
HOWCO method of cementing to be used.

MUD PROGRAM

0' - 1,480'
1,480' - 6,100'
6,100' - 7,400'Fresh water or spud mud
10# Brine Water
10-10.2 Brine Mud

See "Development Plan for Surface Use", "Blowout Preventer Equipment" and "Rig Layout" attached.

NOTE: Approval to drill this well was originally granted on October 17, 1972, styled as the Isler-Federal Well #3. The API Unique Well #30-005-20417 originally assigned to IN ABOVE SPACE DESCRIBE PROPOSED PROGRAM: If proposal is to deepen or plug back, give data on present productive zone and proposed new productive zone. If proposal is to drill or deepen directionally, give pertinent data on subsurface locations and measured and true vertical depths. Give blowout preventer program, if any. this location should be carried over to the new lease and well styling

24. of Isler-Federal "B" Well #1.

SIGNED

A. L. Clemmer
D. L. Clemmer

TITLE

Proration Specialist

DATE

8-7-74

(This space for Federal or State office use)

PERMIT NO.

APPROVAL DATE

APPROVED
AUG 21 1974
R. L. BEEKMANN
ACTING DISTRICT ENGINEERTHIS APPROVAL IS RESCINDED IF OPERATIONS
ARE NOT COMMENCED WITHIN 3 MONTHS.
EXPIRES NOV 21 1974
*See Instructions On Reverse Side

5. LEASE DESIGNATION AND SERIAL NO.

Federal NM 055564

6. IF INDIAN, ALLOTTEE OR TRIBE NAME

7. UNIT AGREEMENT NAME

8. FARM OR LEASE NAME

Isler-Federal

9. WELL NO.

3

10. FIELD AND POOL, OR WILDCAT

Many Gates - Abo

11. SEC., T., R., M., OR BLK.
AND SURVEY OR AREA

Sec. 29, T-9-S, R-30-E

12. COUNTY OR PARISH

Chaves

13. STATE

New Mexico

Exxon Lse. No. _____

NEW MEXICO OIL CONSERVATION COMMISSION

Form C-102
Supersedes C-128
Effective 1-1-65

WELL LOCATION AND ACREAGE DEDICATION PLAT

State Lse. No. _____

Federal Lse. No. NM 055564

All distances must be from the outer boundaries of the Section.

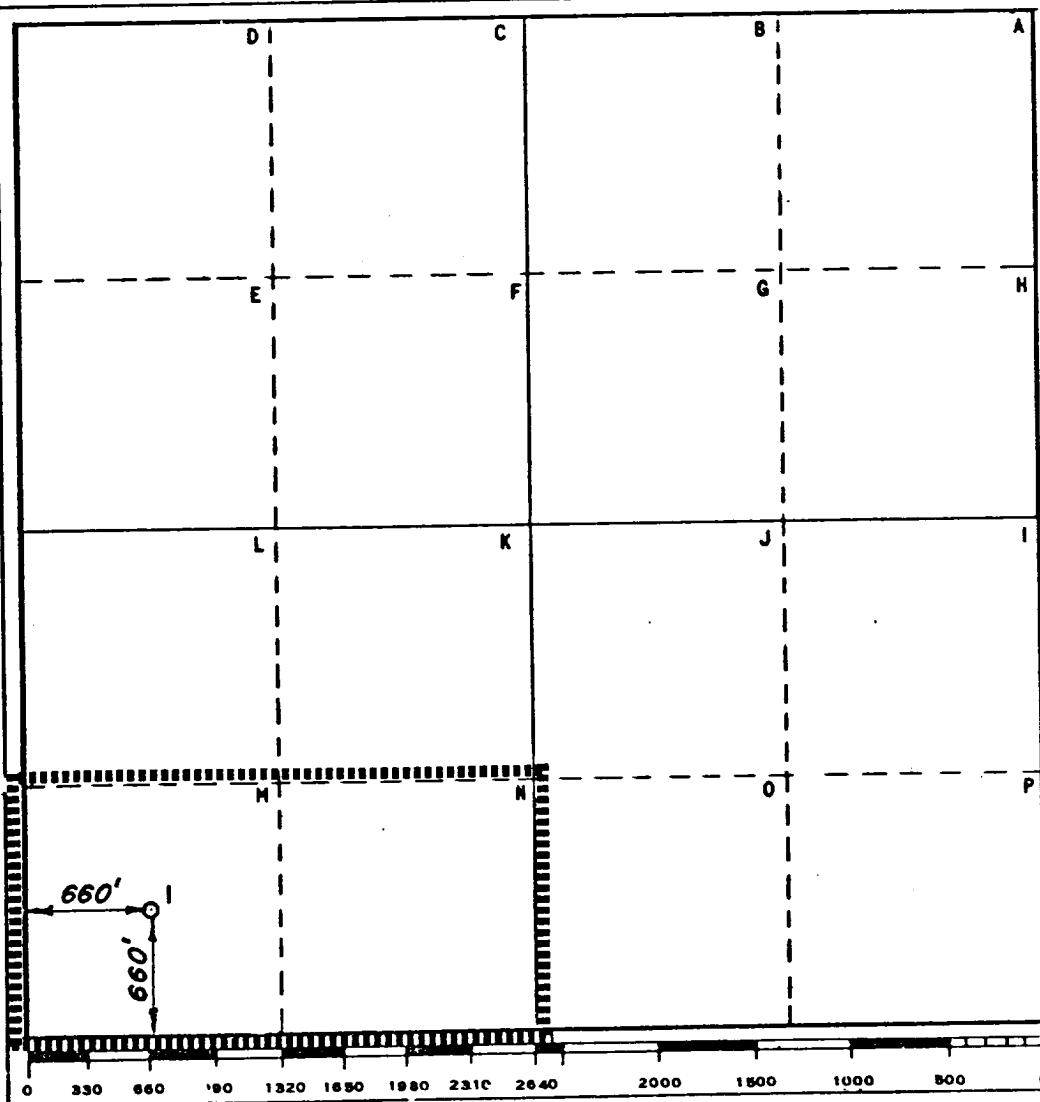
Operator Exxon Corporation		Lease ISLER - FEDERAL		Well No. 3
Unit Letter "H"	Section 29	Township 9 South	Range 30 East	County Chaves
Actual Footage Location of Well: 660 feet from the South line and 660 feet from the West line				
Ground Level Elev. _____	Producing Formation ABO	Pool Many Gates	Dedicated Acreage: 80 Acres	

1. Outline the acreage dedicated to the subject well by colored pencil or hachure marks on the plat below.
2. If more than one lease is dedicated to the well, outline each and identify the ownership thereof (both as to working interest and royalty).
3. If more than one lease of different ownership is dedicated to the well, have the interests of all owners been consolidated by communitization, unitization, force-pooling, etc?

☐ Yes ☐ No If answer is "yes," type of consolidation _____

If answer is "no," list the owners and tract descriptions which have actually been consolidated. (Use reverse side of this form if necessary.) _____

No allowable will be assigned to the well until all interests have been consolidated (by communitization, unitization, forced-pooling, or otherwise) or until a non-standard unit, eliminating such interests, has been approved by the Commission.



CERTIFICATION

I hereby certify that the information contained herein is true and complete to the best of my knowledge and belief.

Name D. L. ClemmerPosition Proration SpecialistCompany Exxon Corporation
Box 1600 Midland, TexasDate 8-9-74

RECEIVED
AUG 13 1974
U.S. GEOLOGICAL SURVEY
ARTESIA, NEW MEXICO
I hereby certify that the well location shown on this plat was plotted from field notes of actual surveys made by me or under my supervision, and that the same is true and correct to the best of my knowledge and belief.

Date Surveyed 9-13-72Registered Professional Engineer
and/or Land SurveyorH. S. WestfieldCertificate No. 1382

DEVELOPMENT PLAN FOR SURFACE USE ON ISLER-FEDERAL
WELL NO. 3

Attached is a segment of a map in Chaves County, New Mexico showing the location of the proposed well. Also attached are the following listed items as requested by the U.S.G.S.

1. Existing roads. (See area map.)
2. Planned access to the location. (See area map.)
3. Offsetting Pool wells. (See area map)
4. Lateral roads to other wells. (See area map.)
5. Location of tank battery and flow line will be furnished at a later date.
6. Water will be hauled in from an off lease source.
7. The drilling contractor will be required to comply with OSHA requirements. Trash and junk to be buried in a separate trash pit or hauled to an operating sanitary land fill.
8. No camps are involved.
9. No airstrips are involved.
10. A sketch of a typical location layout is attached showing the position of the rig, pipe rack and reserve pit, as well as the size of the location.
11. The location will be restored to the satisfaction of the Bureau of Land Management.
12. The drilling site area consists of sand dunes with sparse vegetation and the drilling of this well will not adversely affect the environment.
13. Blowout Prevention Equipment will be 2000 psi working pressure, tested according to industry standards. (See Equip, Disc. Attached.)

BLOWOUT PREVENTER SPECIFICATION
EQUIPMENT DESCRIPTION

TYPE II-C

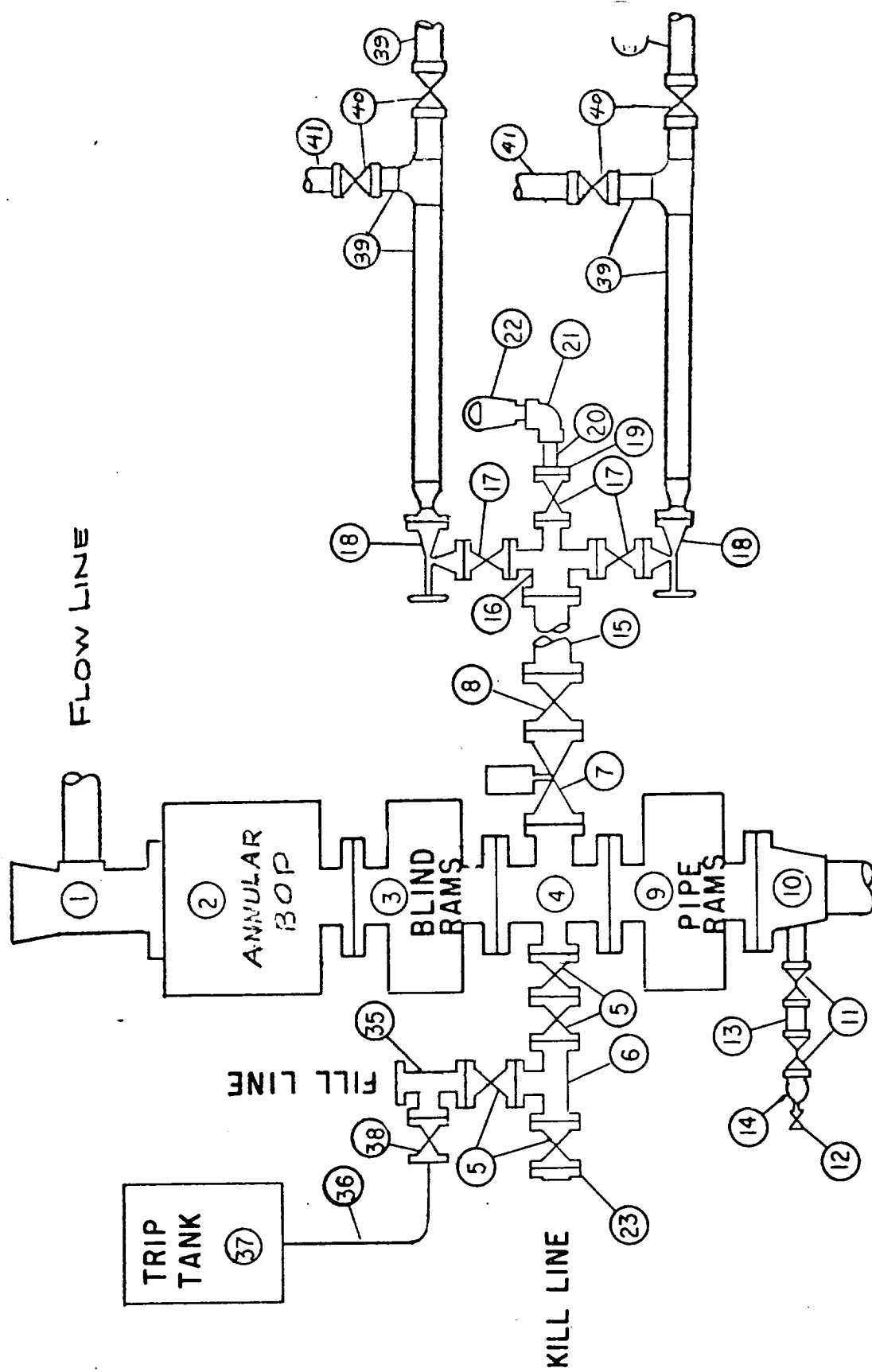
All equipment should be at least 2,000 psi WP or higher unless otherwise specified.

1. Bell nipple.
2. Hydril or Shaffer bag type preventer.
3. Ram type pressure operated blowout preventer with blind rams.
4. Flanged spool with one 4-inch and one 2-inch (minimum) outlet.
5. 2-inch (minimum) flanged plug or gate valve.
6. 2-inch by 2-inch by 2-inch (minimum) flanged tee.
7. 4-inch pressure operated gate valve.
8. 4-inch flanged gate or plug valve.
9. Ram type pressure operated blowout preventer with pipe rams.
10. Flanged type casing head with one side outlet (furnished by Exxon).
11. 2-inch threaded (or flanged) plug or gate valve (furnished by Exxon).
Flanged on 5000# WP, threaded on 3000# WP or less.
12. Needle valve (furnished by Exxon).
13. 2-inch nipple (furnished by Exxon).
14. Tapped bull plug (furnished by Exxon).
15. 4-inch flanged spacer spool.
16. 4-inch by 2-inch by 2-inch by 2-inch flanged cross.
17. 2-inch flanged plug or gate valve.
18. 2-inch flanged adjustable choke.
19. 2-inch threaded flange.
20. 2-inch XXH nipple.
21. 2-inch forged steel 90° Ell.
22. Cameron (or equal.) threaded pressure gage.
23. Threaded flange.
35. 2-inch flanged tee.
36. 3-inch (minimum) hose. (Furnished by Exxon).
37. Trip tank. (Furnished by Exxon).
38. 2-inch flanged plug or gate valve.
39. 2-1/2-inch pipe, 300' to pit, anchored.
40. 2-1/2-inch SE valve.
41. 2-1/2-inch line to steel pit or separator.

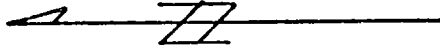
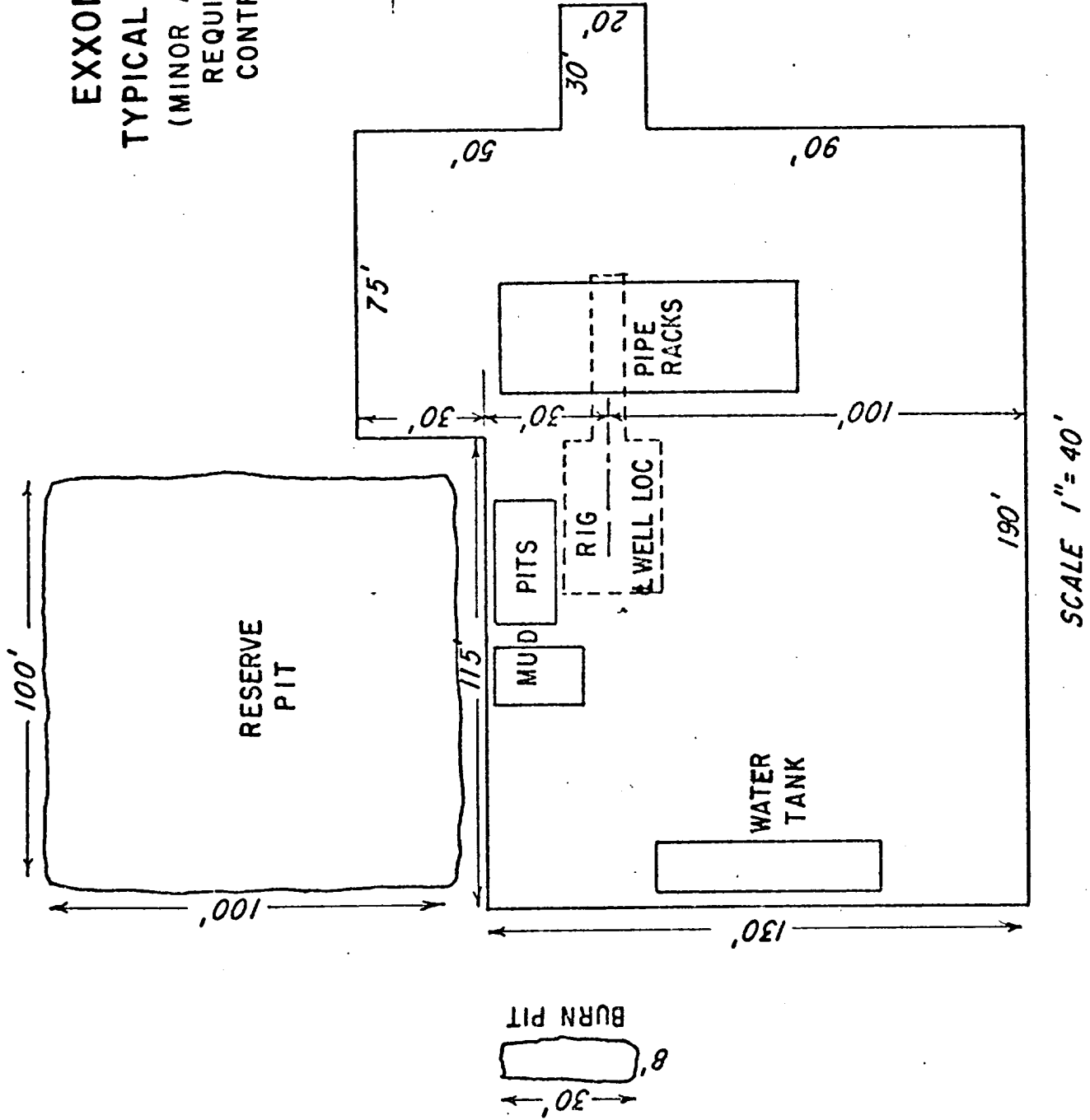
NOTES:

1. Items 3, 4 and 9 may be replaced with double ram type preventer with side outlets between the rams.
2. The two valves next to the stack on the fill and kill line to be closed unless drill string is being pulled.
3. Kill line is for emergency use only. This connection shall not be used for filling.
4. Replacement pipe rams and blind rams shall be on location at all times.
5. Only type U, LWS and QRC ram type preventers with secondary seals are acceptable for 5000 psi WP and higher BOP stacks.
6. Type E ram-type BOP's with factory modified side outlets may be used on 3000 psi or lower WP BOP stacks.

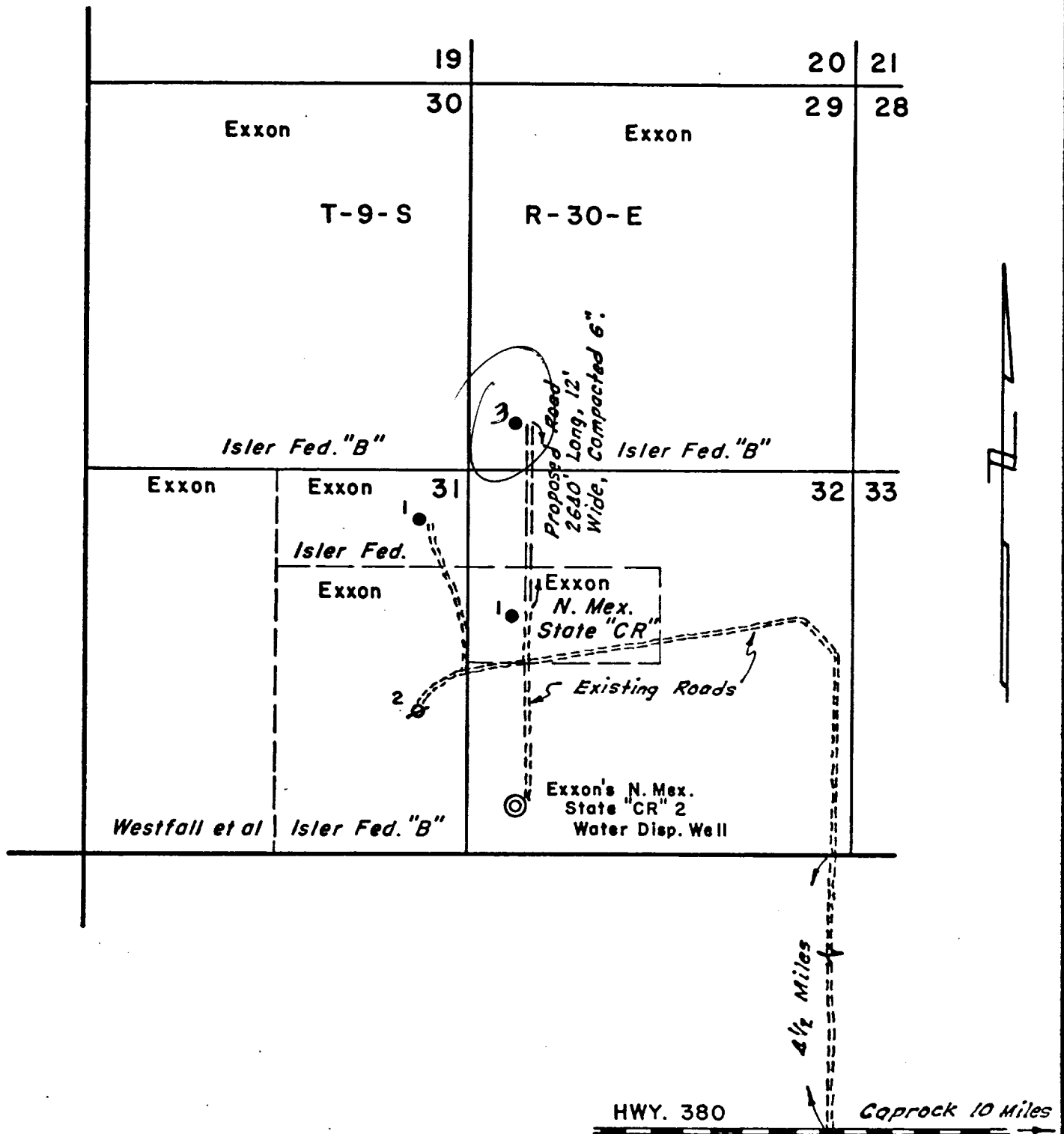
MIDLAND DRILLING ORGANIZATION
 BLOWOUT PREVENTER SPECIFICATION
 TYPE II - C



EXXON CORPORATION
 TYPICAL LOCATION LAYOUT
 (MINOR ADJUSTMENTS MAY BE
 REQUIRED BY TERRAIN OR
 CONTRACTORS RIG SIZE)



SCALE 1" = 40'



PLAT SHOWING ROADS IN VICINITY OF
EXXON'S ISLER-FEDERAL WELL NO. 3
T-9-S, R-30-E, CHAVES CO., N.M.

EXXON COMPANY, U.S.A.
A DIVISION OF EXXON CORPORATION
PRODUCTION DEPARTMENT

DRAWN *Burns*

ENGR. SECTION _____ REVISED _____

SCALE 1" = 2000' JOB NO. _____

FILE NO. _____

CHECKED _____

APPROVED _____

DATE 8-9-'74

A-6841

