

UNITED STATES
DEPARTMENT OF THE INTERIOR
GEOLOGICAL SURVEY

APPLICATION FOR PERMIT TO DRILL, DEEPEN, OR PLUG BACK

1a. TYPE OF WORK

DRILL ☒DEEPEN ☐PLUG BACK ☐

b. TYPE OF WELL

OIL
WELL ☒GAS
WELL ☐OTHER ☐SINGLE
ZONE ☐MULTIPLE
ZONE ☐

2. NAME OF OPERATOR

McClellan Oil Corporation

SEP 13 1976

3. ADDRESS OF OPERATOR

P. O. Box 848, Roswell, New Mexico 88201

O. C. C.

4. LOCATION OF WELL (Report location clearly and in accordance with any State requirements.)

At surface

2310' FNL & 330' FNL

At proposed prod. zone

14. DISTANCE IN MILES AND DIRECTION FROM NEAREST TOWN OR POST OFFICE*

20 miles North of Loco Hills

15. DISTANCE FROM PROPOSED*
LOCATION TO NEAREST
PROPERTY OR LEASE LINE, FT.
(Also to nearest drlg. unit line, if any)

330'

18. DISTANCE FROM PROPOSED LOCATION*
TO NEAREST WELL, DRILLING, COMPLETED,
OR APPLIED FOR, ON THIS LEASE, FT.

1320'

16. NO. OF ACRES IN LEASE

400

19. PROPOSED DEPTH

2250'

17. NO. OF ACRES ASSIGNED
TO THIS WELL

40

20. ROTARY OR CABLE TOOLS

Cable Tools

21. ELEVATIONS (Show whether DF, RT, GR, etc.)

22. APPROX. DATE WORK WILL START*

August 25, 1976

23.

PROPOSED CASING AND CEMENTING PROGRAM

SIZE OF HOLE	SIZE OF CASING	WEIGHT PER FOOT	SETTING DEPTH	QUANTITY OF CEMENT
10 1/4"	8-5/8"	20 lb.	600'	150 sx. circ.
8"	5 1/2"	15 1/2 lb.	2250'	100 sx.

Will drill to approx. 2250' to test the Queen sand. If production is indicated, will set casing and attempt completion.

Cortez Drilling Company, Inc., Box 848, Roswell, New Mexico will be the contractor.

RECEIVED

AUG 30 1976

U. S. GEOLOGICAL SURVEY
ARTESIA, NEW MEXICO

IN ABOVE SPACE DESCRIBE PROPOSED PROGRAM: If proposal is to deepen or plug back, give data on present productive zone and proposed new productive zone. If proposal is to drill or deepen directionally, give pertinent data on subsurface locations and measured and true vertical depths. Give blowout prevention program, if any.

24.

SIGNED

J. J. McClellan

TITLE

Operator

DATE

August 9, 1976

(This space for Federal or State office use)

PERMIT NO.

APPROVAL DATE

DATE

APPROVED BY
SEP 1976
R. L. BEEKMAN
ACTING DISTRICT ENGINEERTHIS APPROVAL IS RESCINDED IF OPERATIONS
ARE NOT COMMENCED WITHIN 3 MONTHS.
DEC 10 1976

*See Instructions On Reverse Side

RECEIVED

SEP 15 1976

OIL CONSERVATION COMM.
HOBBS, N. M.

NEW MEXICO OIL CONSERVATION COMMISSION
WELL LOCATION AND ACREAGE DEDICATION PLAT

Form C-102
Supersedes C-128
Effective 1-1-65

All distances must be from the outer boundaries of the Section

Operator McCLELLAN OIL CORP.			Lease Federal 17		Well No. 2
Unit Letter H	Section 17	Township 15 South	Range 30 East	County Chaves	
Actual Footage Location of Well: 2310 feet from the North line and 330 feet from the East line					
Ground Level Elev.	Producing Formation Queen sand	Pool Undesignated	Dedicated Acreage: 40 Acres		

RECEIVED
AUG 30 1976

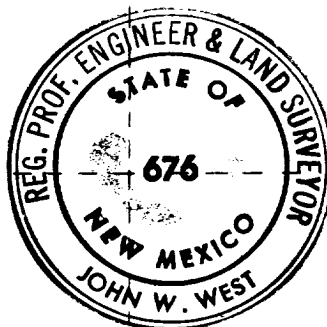
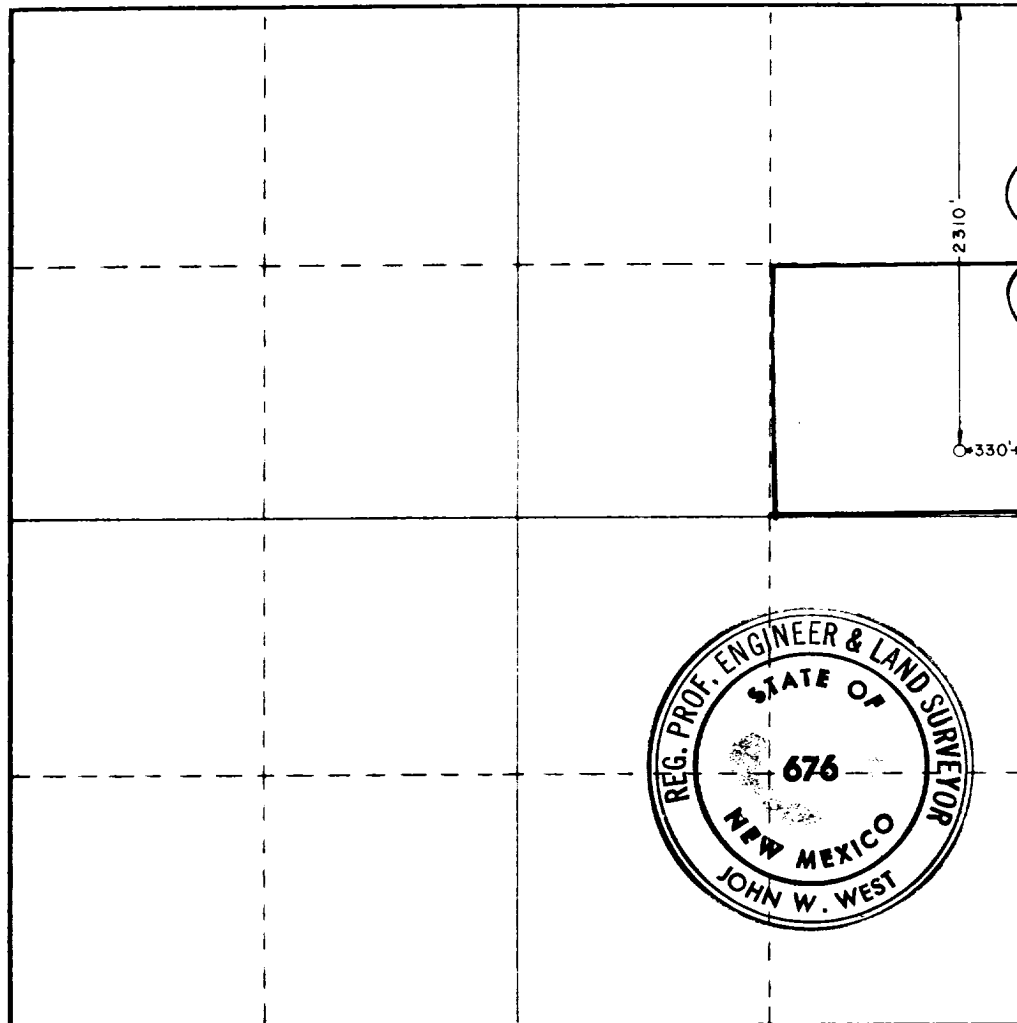
U.S. GEOLOGICAL SURVEY
ARTESIA, NEW MEXICO

1. Outline the acreage dedicated to the subject well by colored pencil or hachure marks on the plat below.
2. If more than one lease is dedicated to the well, outline each and identify the ownership thereof (both as to working interest and royalty).
3. If more than one lease of different ownership is dedicated to the well, have the interests of all owners been consolidated by communitization, unitization, force-pooling, etc?

☐ Yes ☐ No If answer is "yes," type of consolidation _____

If answer is "no," list the owners and tract descriptions which have actually been consolidated (Use reverse side of this form if necessary.) _____

No allowable will be assigned to the well until all interests have been consolidated (by communitization, unitization, forced-pooling, or otherwise) or until a non-standard unit, eliminating such interests, has been approved by the Commission.



CERTIFICATION

I hereby certify that the information contained herein is true and complete to the best of my knowledge and belief.

Jack L. McClellan
Name
Jack L. McClellan
Position
Operator

Company
McClellan Oil Corporation

Date
August 12, 1976

I hereby certify that the well location shown on this plat was plotted from field notes of actual surveys made by me or under my supervision, and that the same is true and correct to the best of my knowledge and belief.

Date Surveyed
August 10, 1976

Registered Professional Engineer and/or Land Surveyor

John W. West
Certificate No. **676**

SEP 25 1976
OIL CONSERVATION COMM.
HOBBS, N. M.