

Exxon Lse. No. \_\_\_\_\_ NEW MEXICO OIL CONSERVATION COMMISSION  
State Lse. No. \_\_\_\_\_ WELL LOCATION AND ACREAGE DEDICATION PLAT

Form C-102  
Supersedes C-128  
Effective 1-1-65

Federal Lse. No. \_\_\_\_\_ All distances must be from the outer boundaries of the Section.

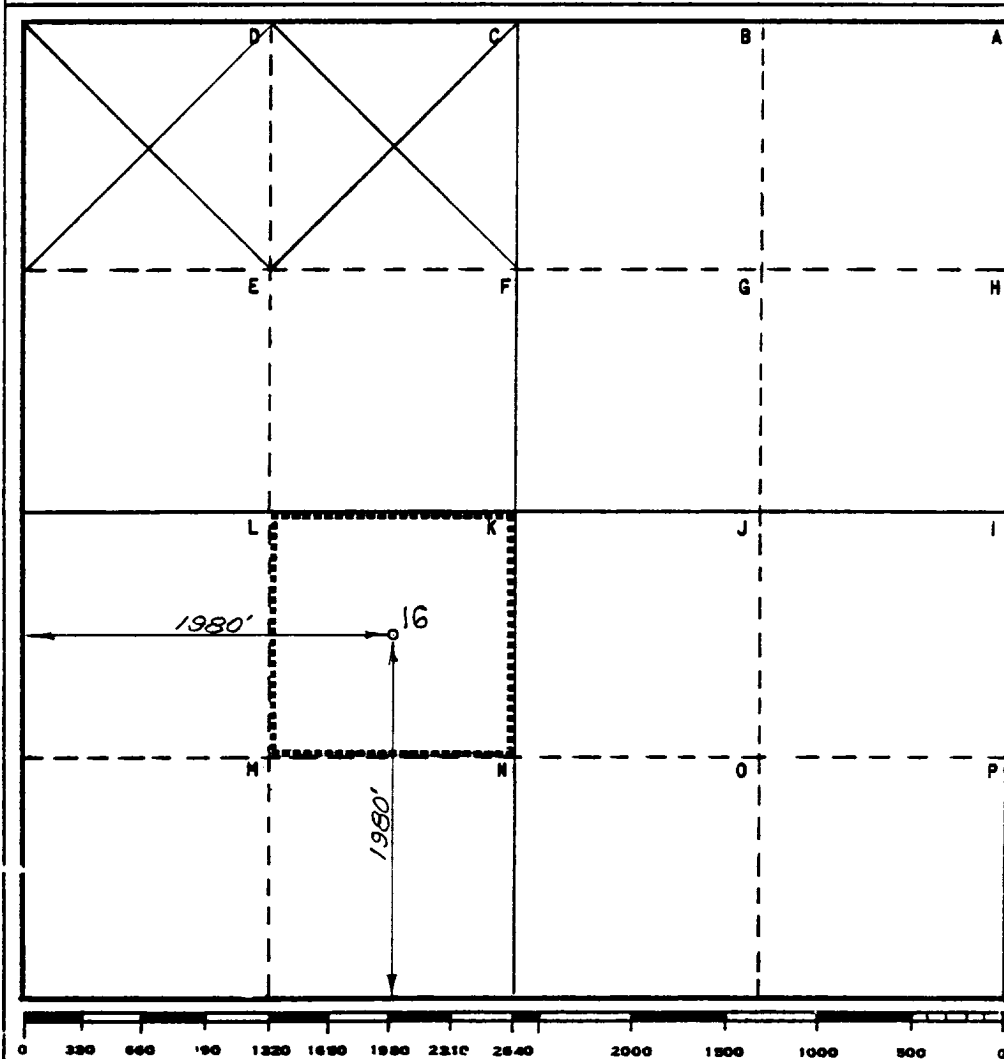
Operator Exxon Corporation		Lease Vattam Federal		Well No. 16	
Unit Letter K	Section 7	Township 8 S	Range 31 E	County Chaves	
Actual Footage Location of Well: 1980 feet from the South line and 1980 feet from the West line					
Ground Level Elev: 4203'	Producing Formation San Andres		Pool Gom. Gom. Sal Undesig. Gato Sal	Dedicated Acreage: 40 Acres	

1. Outline the acreage dedicated to the subject well by colored pencil or hachure marks on the plat below.
2. If more than one lease is dedicated to the well, outline each and identify the ownership thereof (both as to working interest and royalty).
3. If more than one lease of different ownership is dedicated to the well, have the interests of all owners been consolidated by communitization, unitization, force-pooling, etc?

☐ Yes ☐ No If answer is "yes," type of consolidation \_\_\_\_\_

If answer is "no," list the owners and tract descriptions which have actually been consolidated. (Use reverse side of this form if necessary.) \_\_\_\_\_

No allowable will be assigned to the well until all interests have been consolidated (by communitization, unitization, forced-pooling, or otherwise) or until a non-standard unit, eliminating such interests, has been approved by the Commission.



#### CERTIFICATION

I hereby certify that the information contained herein is true and complete to the best of my knowledge and belief.

Name

Melba Knippling

Position

UNIT HEAD

Company Exxon Corporation

Box 1600 Midland, Texas

Date

1-27-82

I hereby certify that the well location shown on this plat was plotted from field notes of actual surveys made by me or under my supervision, and that the same is true and correct to the best of my knowledge and belief.

Date Surveyed

1-18-82

Registered Professional Engineer  
and/or Land Surveyor

W. E. Shetterfield

Certificate No.

1382

23 Miles SW of Elida, New Mexico

C.E. Sec. File No. W-A-7566-F

RECEIVED

JUN 21 1982

C.C.D.  
HOBBS OFFICE