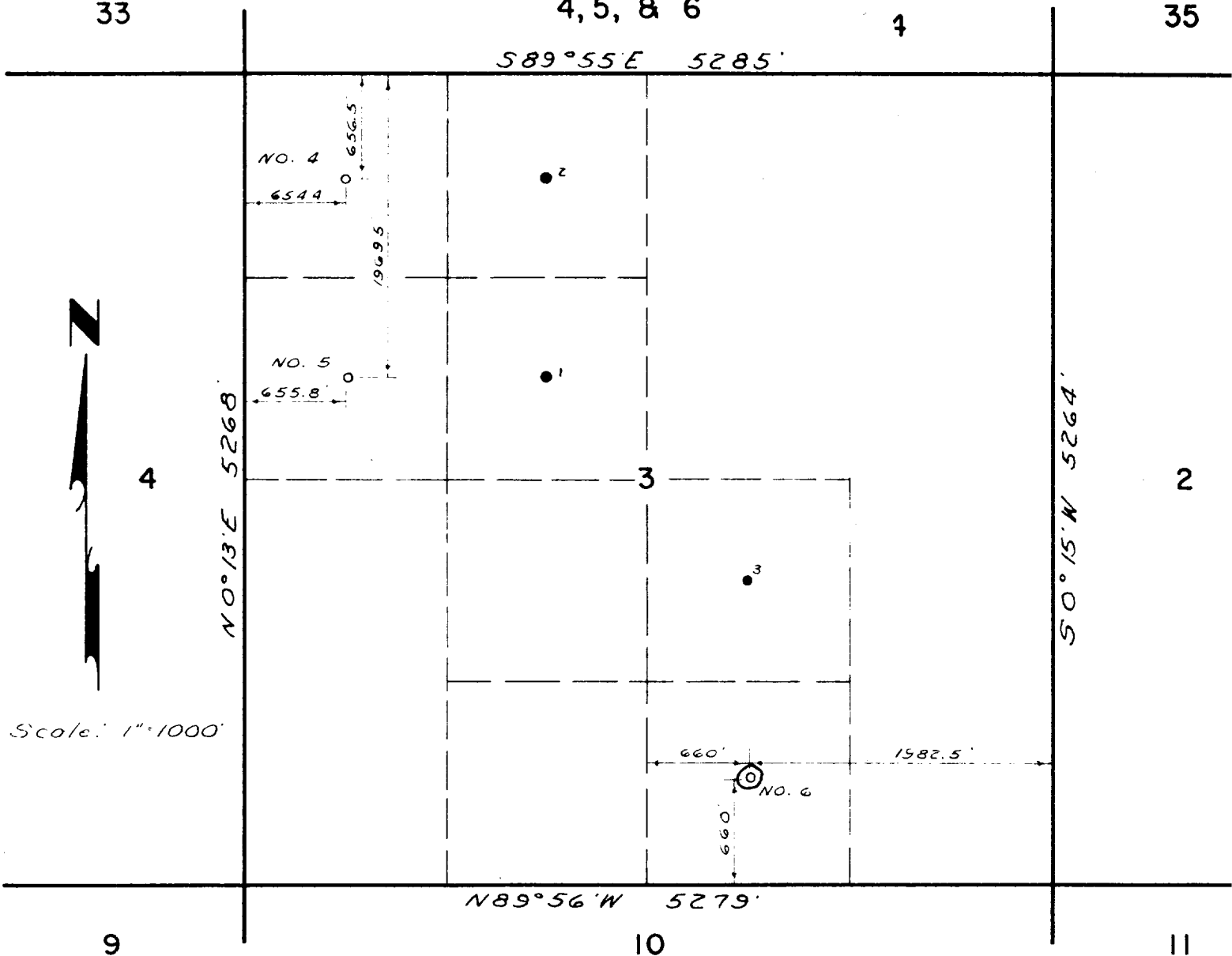


33

4, 5, &amp; 6

4

35



THE STATE OF NEW MEXICO  
COUNTY OF LEA

I, S. W. Howell, a Registered Land Surveyor, of the State of New Mex. do hereby certify that the above plat for "Carter Foundation Production Co. Mattix No. 4", in the center of the NW¼ of the NW¼ of Section 3, T-24-S, Range 37E, NMPM Lea County, New Mexico; "Carter Foundation Production Co. Mattix No. 5", in the center of the SW¼ of the NW¼ of Section 3, T-24-S, Range 37E, NMPM Lea County, New Mexico, and "Carter Foundation Production Co. Mattix No. 6", in the center of the SW¼ of the SE¼ of Section 3, T-24-S, Range 37E, NMPM Lea County, New Mexico, represents a survey actually made by me on the ground.

Dated September 21, 1961

KENNETH E. ESMOND & ASSOCIATES  
CONSULTING ENGINEERS

By: S. W. Howell #1587  
S. W. Howell  
Registered Land Surveyor