

UNITED STATES
DEPARTMENT OF THE INTERIOR
BUREAU OF LAND MANAGEMENT

SUNDRY NOTICES AND REPORTS ON WELLS

Do not use this form for proposals to drill or to deepen or reentry to a different reservoir.
Use "APPLICATION FOR PERMIT—" for such proposals

SUBMIT IN TRIPLICATE

1. Type of Well
☐ Oil Well ☐ Gas Well ☒ Other Injection Well

2. Name of Operator
Texaco Exploration & Production Inc.

3. Address and Telephone No.
P.O. Box 730, Hobbs, NM 88241-0730 (505) 393-7191

4. Location of Well (Footage, Sec., T., R., M., or Survey Description)
Unit A, 660 FNL, 660 FEL
Sec 6, T-24-s, R-37-E

FORM APPROVED
Budget Bureau No. 1004-0135
Expires: September 30, 1990

5. Lease Designation and Serial No.

NM- 037667 7488

6. If Indian, Allottee or Tribe Name

7. If Unit or CA, Agreement Designation

#134

8. Well Name and No. Myers

Langlie Mattix Unit #134

9. API Well No.

30-025-11026

10. Field and Pool, or Exploratory Area

Langlie Mattix 7R Queen GB

11. County or Parish, State

Lea County, NM

12. CHECK APPROPRIATE BOX(s) TO INDICATE NATURE OF NOTICE, REPORT, OR OTHER DATA

TYPE OF SUBMISSION

- ☒ Notice of Intent
☐ Subsequent Report
☐ Final Abandonment Notice

TYPE OF ACTION

- ☒ Abandonment
☐ Recompletion
☐ Plugging Back
☐ Casing Repair
☐ Altering Casing
☐ Other
☐ Change of Plans
☐ New Construction
☐ Non-Routine Fracturing
☐ Water Shut-Off
☐ Conversion to Injection

(Note: Report results of multiple completion on Well Completion or Recompletion Report and Log form.)

13. Describe Proposed or Completed Operations (Clearly state all pertinent details, and give pertinent dates, including estimated date of starting any proposed work. If well is directionally drilled, give subsurface locations and measured and true vertical depths for all markers and zones pertinent to this work.)

- 1) Inform BLM and OCD 24 hours prior to commencement of plugging.
- 2) Run CIBL and find TOC. Find base and top of cement from squeeze.
- 3) TIH with open-ended work string. Tag CIBP at 3420' (15' cement on top).
- 4) Load hole with salt gel mud; 10# brine and 25# gel/ Bbl. POH.
- 5) Pump 20', 2 sx, cement on top of the CIBP, for a 35'+ total.
Move up hole and pump 100' plug, 10 sx, from approximately 2650'-2750' or across the top of the primary cement. WOC. Tag plug.
- 6) Move up hole. Assuming cement from squeeze has filled the annulus past 1250', pump 100' plug, 10 sx, from 1150'-1250' across the top of the salt section. WOC. Tag plug.
- 7) Move up hole and spot 35 sx from 451' to the surface. Lay down work string and ND BOP. Squeeze annulus from surface if necessary.
- 8) Cut off wellhead and install dry hole marker. Clean location.
- 9) Restore surface as per Federal regulations.

14. I hereby certify that the foregoing is true and correct

Signed [Signature] Title Production Engineer

Date 4-30-92

(This space for Federal or State office use)

Approved by [Signature] Title

Date 5-6-92

Conditions of approval, if any:

Title 18 U.S.C. Section 1001, makes it a crime for any person knowingly and willfully to make to any department or agency of the United States any false, fictitious or fraudulent statements or representations as to any matter within its jurisdiction.

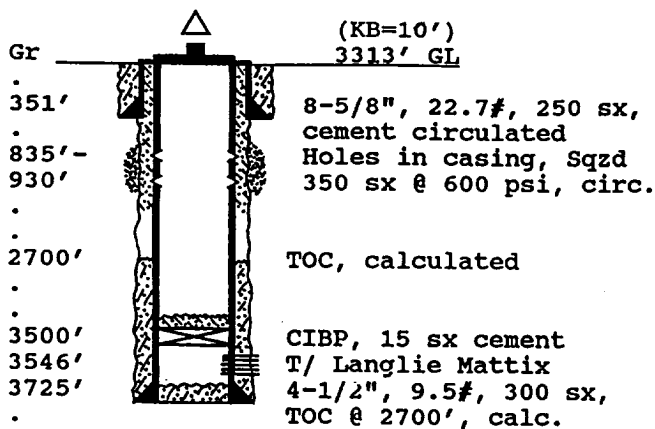
*See Instruction on Reverse Side

WELL DATA SHEET

PO-113
(3/92)

OPERATOR: Texaco E&P Inc. Lease: Myers Langlie Mattix Unit #134
 FOOTAGE LOCATION: 660 FNL X 660 FEL Sec./Twn/Rng: Unit A, Sec 6, T-24-S, R-37-E
Former American Petroleum Corp. Courtland Myers 'E' #15 Lea County, New Mexico

SCHEMATIC



Tops:
 Salt 1200'-2820'
 Yates 3001'
 7 Rivers 3227'
 Queen 3504'

TABULAR DATA

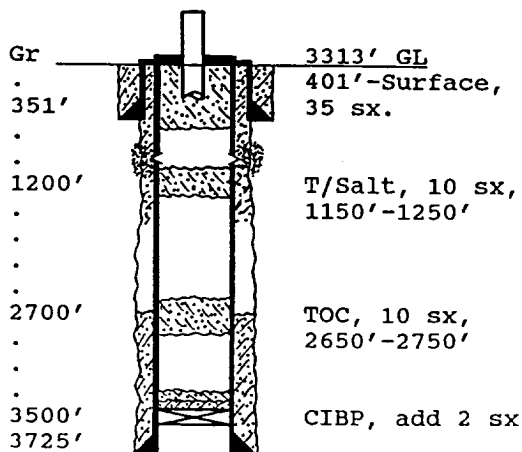
Surface Casing: Set at 351'
 Size 8-5/8, 22.7# Cemented with 250 sx.
 TOC surface ' determined by circulation
 Hole Size 12-1/4" Comp. Date 1-22-62.
 Intermediate casing: Set at _____
 Size NONE Cemented with _____ sx.
 TOC _____ ' determined by _____
 Hole Size _____
 Production Casing: Set at 3725'
 Size 4 1/2", 9.5# Cemented with 300 sx.
 TOC 2700 ' determined by calculated
 Hole Size 7 7/8"
 Present Completion: (Injection Interval)
3546' to 3655' 2 spf, 48 perfs

PLUG AND ABANDON DATA

PO-113
(3/92)

OPERATOR: Texaco E&P Inc. LEASE: Myers Langlie Mattix Unit #134
 FOOTAGE LOCATION: 660 FNL X 660 FEL Sec./Twn/Rng: Unit A, Sec 6, T-24-S, R-37-E
Holes in casing squeezed with 350 sx @ 600 psi, 3-27-92 Lea County, New Mexico

SCHEMATIC



PLUGGING DATA

Surface Plug:
 Size 401'-surf. Cemented with 35 sx.
 Includes 10% extra cement volume.
 Class 'C' Cement, 1.32 cu ft/ sx.
 Intermediate Plug(s):
 Size 1150'-1250' Cemented with 10 sx.
2650'-2750' 10 sx
 Class 'C' cement, 1.32 cu ft/ sx.
 Producing Zone Plugs:
 Size CIBP, 15' Cemented with 15 sx.
 Add 20' cement, 2 sx on top of CIBP.