

UNITED STATES  
DEPARTMENT OF THE INTERIOR  
BUREAU OF LAND MANAGEMENT

SUNDRY NOTICES AND REPORTS ON WELLS

Do not use this form for proposals to drill or to deepen or reentry to a different reservoir.  
Use "APPLICATION FOR PERMIT—" for such proposals

SUBMIT IN TRIPLICATE

1. Type of Well  
☐ Oil Well ☐ Gas Well ☒ Other Water Injection Well

2. Name of Operator

Texaco Exploration & Production Inc.

3. Address and Telephone No.

P.O. Box 730, Hobbs, NM 88241-0730 (505) 393-7191

4. Location of Well (Footage, Sec., T., R., M., or Survey Description)

Unit G, 1968 FNL, 1980 FEL  
Section 6, T-24-S, R-37-E

FORM APPROVED  
Budget Bureau No. 1004-0135  
Expires: September 30, 1990

5. Lease Designation and Serial No.

NM -037667 7888

6. If Indian, Allottee or Tribe Name

7. If Unit or CA, Agreement Designation

8. Well Name and No. Myers

Langlie Mattix Unit #140

9. API Well No.

30-025-11028

10. Field and Pool, or Exploratory Area

11. County or Parish, State

Lea County, NM

12. CHECK APPROPRIATE BOX(s) TO INDICATE NATURE OF NOTICE, REPORT, OR OTHER DATA

TYPE OF SUBMISSION

- ☒ Notice of Intent  
☐ Subsequent Report  
☐ Final Abandonment Notice

TYPE OF ACTION

- ☒ Abandonment  
☐ Recompletion  
☐ Plugging Back  
☐ Casing Repair  
☐ Altering Casing  
☐ Other

- ☐ Change of Plans  
☐ New Construction  
☐ Non-Routine Fracturing  
☐ Water Shut-Off  
☐ Conversion to Injection

(Note: Report results of multiple completion on Well Completion or  
Recompletion Report and Log form.)

13. Describe Proposed or Completed Operations (Clearly state all pertinent details, and give pertinent dates, including estimated date of starting any proposed work. If well is directionally drilled, give subsurface locations and measured and true vertical depths for all markers and zones pertinent to this work.)

- 1) Inform BLM and OCD 24 hours prior to commencement of plugging.
- 2) TIH with open-ended work string. Tag CIBP at 3400' (35' cement on top).
- 3) Load hole with salt gel mud; 10# brine and 25# gel/ Bbl. POH.
- 4) By wireline, perf two squeeze holes at 1246'.
- 5) Move up hole and pump 100' plug, 10 sx, from approximately 2805'-2905' across the base of the salt section. WOC. Tag plug.
- 6) Move up hole. Establish circulation through squeeze holes. Pump 100' plug, 30 sx, from 1146'-1246' across the top of the salt. WOC. Tag plug.
- 7) Move up hole. Circulate 110 sx cement from 407' to the surface through the annulus and fill the casing. Lay down work string and ND BOP.
- 8) Cut off wellhead and install dry hole marker. Clean location.
- 9) Restore surface as per Federal regulations.

14. I hereby certify that the foregoing is true and correct

Signed [Signature] Title Production Engineer

Date 4-30-92

(This space for Federal or State office use)

Approved by [Signature] Title PETROLEUM ENGINEER

Date 5-6-92

Conditions of approval, if any:

Title 18 U.S.C. Section 1001, makes it a crime for any person knowingly and willfully to make to any department or agency of the United States any false, fictitious or fraudulent statements or representations as to any matter within its jurisdiction.

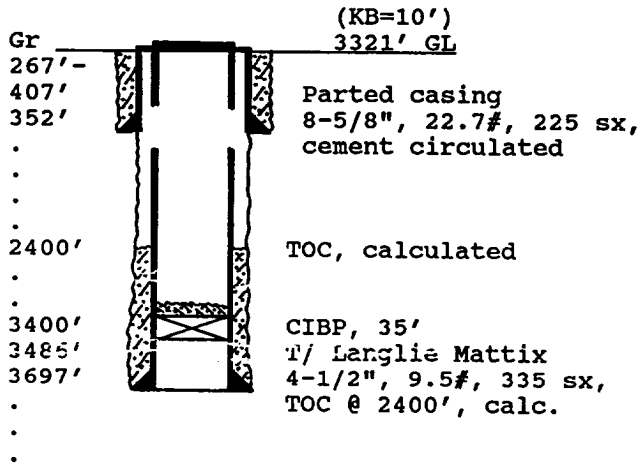
\*See Instruction on Reverse Side

## WELL DATA SHEET

PO-113  
(3/92)

OPERATOR: Texaco E&P Inc. Lease: Myers Langlie Mattix Unit #140  
 FOOTAGE LOCATION: 1968 FNL X 1980 FEL Sec./Twn/Rng: Unit G, Sec 6, T-24-S, R-37-E  
Former American Petroleum Corp. Courtland Myers 'B' #19 Lea County, New Mexico

## SCHEMATIC



Tops:  
Salt 1196'-2855'  
Yates 2935'  
7 Rivers 3251'  
Queen 3519'

## TABULAR DATA

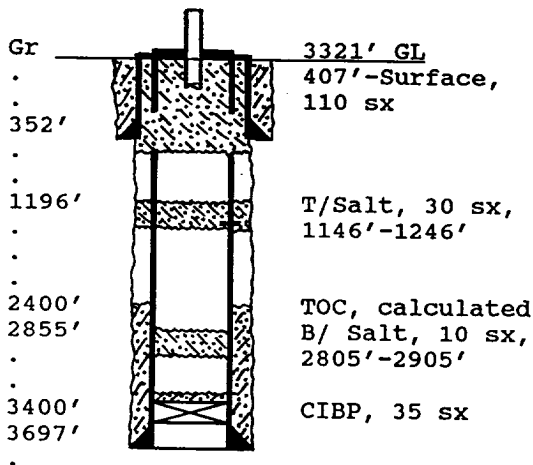
Surface Casing: Set at 352'  
 Size 8-5/8, 22.7# Cemented with 225 sx.  
 TOC surface ' determined by circulation  
 Hole Size 12-1/4" Comp. Date 4-12-62.  
 Intermediate casing: Set at \_\_\_\_\_  
 Size NONE Cemented with \_\_\_\_\_ sx.  
 TOC \_\_\_\_\_ ' determined by \_\_\_\_\_  
 Hole Size \_\_\_\_\_  
 Production Casing: Set at 3696'  
 Size 4 1/2", 9.5# Cemented with 375 sx.  
 TOC 2400 ' determined by calculated  
 Hole Size 7 7/8"  
 Present Completion: (Injection Interval)  
3486' to 3644' 2 spf, 68 perfs

## PLUG AND ABANDON DATA

PO-113  
(3/92)

OPERATOR: Texaco E&P Inc. LEASE: Myers Langlie Mattix Unit #140  
 FOOTAGE LOCATION: 1968 FNL X 1980 FEL Sec./Twn/Rng: Unit G, Sec 6, T-24-S, R-37-E  
Casing parted from 267'-407', 4-7-92. Lea County, New Mexico

## SCHEMATIC



## PLUGGING DATA

Surface Plug:  
 Size 407'-surf. Cemented with 110 sx.  
 Includes 10% extra cement volume.  
 Class 'C' Cement, 1.32 cu ft/ sx.  
 Intermediate Plug(s):  
 Size 1146'-1246' Cemented with 30 sx.  
2805'-2905' 10 sx  
 Class 'C' cement, 1.32 cu ft/ sx.  
 Producing Zone Plugs:  
 Size CIBP Cemented with 35'

\*\*\* Shoot squeeze holes at 1246' \*\*\*