

Submit 3 Copies
to Appropriate
District Office

State of New Mexico
Energy, Minerals and Natural Resources Department

Form C-103
Revised 1-1-89

DISTRICT I
P.O. Box 1980, Hobbs, NM 88240

DISTRICT II
P.O. Drawer DD, Artesia, NM 88210

DISTRICT III
1000 Rio Brazos Rd., Aztec, NM 87410

OIL CONSERVATION DIVISION

P.O. Box 2088
Santa Fe, New Mexico 87504-2088

WELL API NO. 30 - 025 - 11081
5. Indicate Type of Lease STATE <input type="checkbox"/> FEE <input checked="" type="checkbox"/>
6. State Oil & Gas Lease No.
7. Lease Name or Unit Agreement Name MYERS LANGLIE MATTIX UNIT
8. Well No. 222
9. Pool name or Wildcat Langlie Mattix 7R QN GB
10. Elevation (Show whether DF, RKB, RT, GR, etc.) 3272' DF

SUNDRY NOTICES AND REPORTS ON WELLS
(DO NOT USE THIS FORM FOR PROPOSALS TO DRILL OR TO DEEPEN OR PLUG BACK TO A
DIFFERENT RESERVOIR. USE "APPLICATION FOR PERMIT"
(FORM C-101) FOR SUCH PROPOSALS.)

1. Type of Well: OIL WELL <input type="checkbox"/> GAS WELL <input type="checkbox"/> OTHER Water Injection Well
2. Name of Operator Texaco Exploration and Production Inc.
3. Address of Operator P. O. Box 786 Hobbs, NM 88240
4. Well Location Unit Letter E : 1960 Feet From The NORTH Line and 660 Feet From The WEST Line Section 10 Township 24-S Range 37-E NMPM Lea County

11. Check Appropriate Box to Indicate Nature of Notice, Report, or Other Data
NOTICE OF INTENTION TO:
PERFORM REMEDIAL WORK <input type="checkbox"/> PLUG AND ABANDON <input checked="" type="checkbox"/>
TEMPORARILY ABANDON <input type="checkbox"/> CHANGE PLANS <input type="checkbox"/>
PULL OR ALTER CASING <input type="checkbox"/>
OTHER: <input type="checkbox"/>
SUBSEQUENT REPORT OF:
REMEDIAL WORK <input type="checkbox"/> ALTERING CASING <input type="checkbox"/>
COMMENCE DRILLING OPNS. <input type="checkbox"/> PLUG AND ABANDONMENT <input type="checkbox"/>
CASING TEST AND CEMENT JOB <input type="checkbox"/>
OTHER: <input type="checkbox"/>

12. Describe Proposed or Completed Operations (Clearly state all pertinent details, and give pertinent dates, including estimated date of starting any proposed work) SEE RULE 1103.

- 1) Inform NMOCD 24 hours prior to commencement of plugging.
- 2) MIRU. Install BOP. Bleed pressure. Unseat packer and pull out w/ tubing.
- 3) TIH with open-ended work string. Run gauge ring and casing scraper to TD.
- 4) Load hole with salt gel mud; 10# brine and 25# gel/ Bbl. POH.
- 5) By wireline, Set CIBP at approximately 3320'. Cap with 6 sx, 40' cement. Perf two squeeze holes at top of salt section at 1250'.
- 6) Go in hole and pump 100' plug, 2 sx, from approximately 2440'-2340' across the base of the salt section. WOC. Tag plug.
- 7) Set retainer at 1200'. Establish pump in rate through squeeze holes. Squeeze 24 sx through retainer. Sting out and spot 6 sx on top.
- 8) Move up hole. Establish circulation to surface and squeeze annulus through casing holes to surface (100 sx/ 500' depth). Pump 55 sx cement from 305' to the surface and fill the casing. Lay down work string.
- 9) Cut off wellhead and install dry hole marker. Clean and restore location.

I hereby certify that the information above is true and complete to the best of my knowledge and belief.

SIGNATURE Robert McNaughton TITLE Production Engineer DATE 6/22/92
TYPE OR PRINT NAME Robert McNaughton TELEPHONE NO. 397-0428

(This space for State Use)

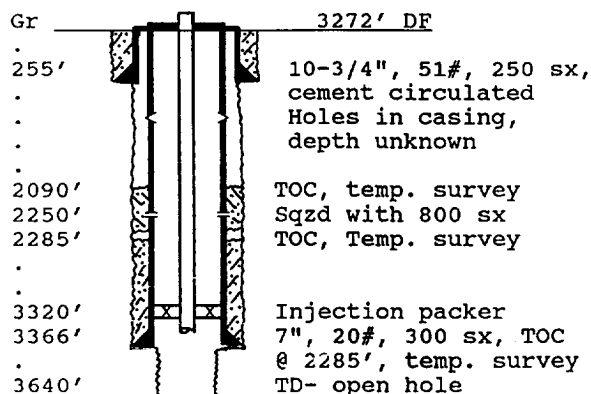
APPROVED BY _____ TITLE _____ DATE _____

CONDITIONS OF APPROVAL, IF ANY:

WELL DATA SHEET

PO-113
(3/92)OPERATOR: Texaco E&P Inc. Lease: Myers Langlie Mattix Unit #222FOOTAGE LOCATION: 1980 FNL X 660 FWL Sec./Twn/Rng: Unit E, Sec 10, T-24-S, R-37-EFormer Gulf Oil Co., S.J. Carr #2 Lea County, New Mexico

SCHEMATIC



Tops:

Salt 1200'-2390'

Yates 2600'

7 Rivers 3355'

Queen 3504'

TABULAR DATA

Surface Casing: Set at 255'

Size 10-3/4", 51# Cemented with 250 sx.

TOC surface ' determined by circulation

Hole Size 13-3/4" Spud Date 6-26-39.

Intermediate casing: Set at

Size NONE Cemented with sx.

TOC ' determined by

Hole Size

Production Casing: Set at 3366'

Size 7", 20# Cemented with 300 sx.

TOC 2285/2090 ' determined by temp. srvy.

Hole Size 8-5/8", 6" open hole (cable tool)

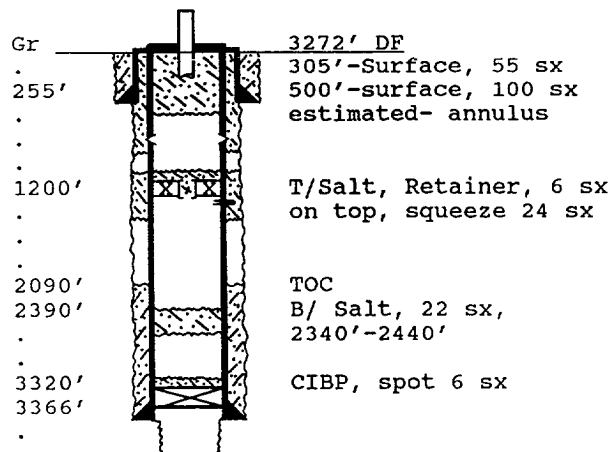
Present Completion: (Injection Interval)

3366' to 3640' open hole

PLUG AND ABANDON DATA

PO-113
(3/92)OPERATOR: Texaco E&P Inc. LEASE: Myers Langlie Mattix Unit #222FOOTAGE LOCATION: 1980 FNL X 660 FWL Sec./Twn/Rng: Unit E, Sec 10, T-24-S, R-37-EAnnulus squeezed @ 2250', 800 sx, TOC @ 2090'. 2-07-77 Lea County, New Mexico

SCHEMATIC



PLUGGING DATA

Surface Plug:

Size 305'-surf. Cemented with 55 sx.

Circulate cement through holes to surface. Annular volume approximately 20 sx/100'. Class 'C' Cement, 1.32 cu ft/ sx.

Intermediate Plug(s):

Size Retainer Cemented with 25 sx.

2340'-2440' 22 sx

Class 'C' cement, 1.32 cu ft/ sx.

Producing Zone Plugs:

Size CIBP Cemented with 6 sx.

Note: If redbeds start sloughing in, leave packer in place and spot 15 sx on top. Pump remaining plugs through injection tubing.