

NEW MEXICO OIL CONSERVATION COMMISSION
WELL LOCATION AND ACREAGE DEDICATION PLAT

Form C-102
Supersedes C-128
Effective 1-1-65

All distances must be from the outer boundaries of the Section

PAN AMERICAN PETROLEUM CORP.			SOUTH MATTIX UNIT FEDERAL			21
Unit Letter K	Section 15	Township 24 SOUTH	Range 37 EAST	County LEA		
Actual Well Location of Well:						
1873.3		feet from the SOUTH line and		2086.7		feet from the WEST line
Ground Level Elev.		Producing Formation ELLENBURGER FOWLER ELLENBURGER		Dedicated Acreage 80		Acres

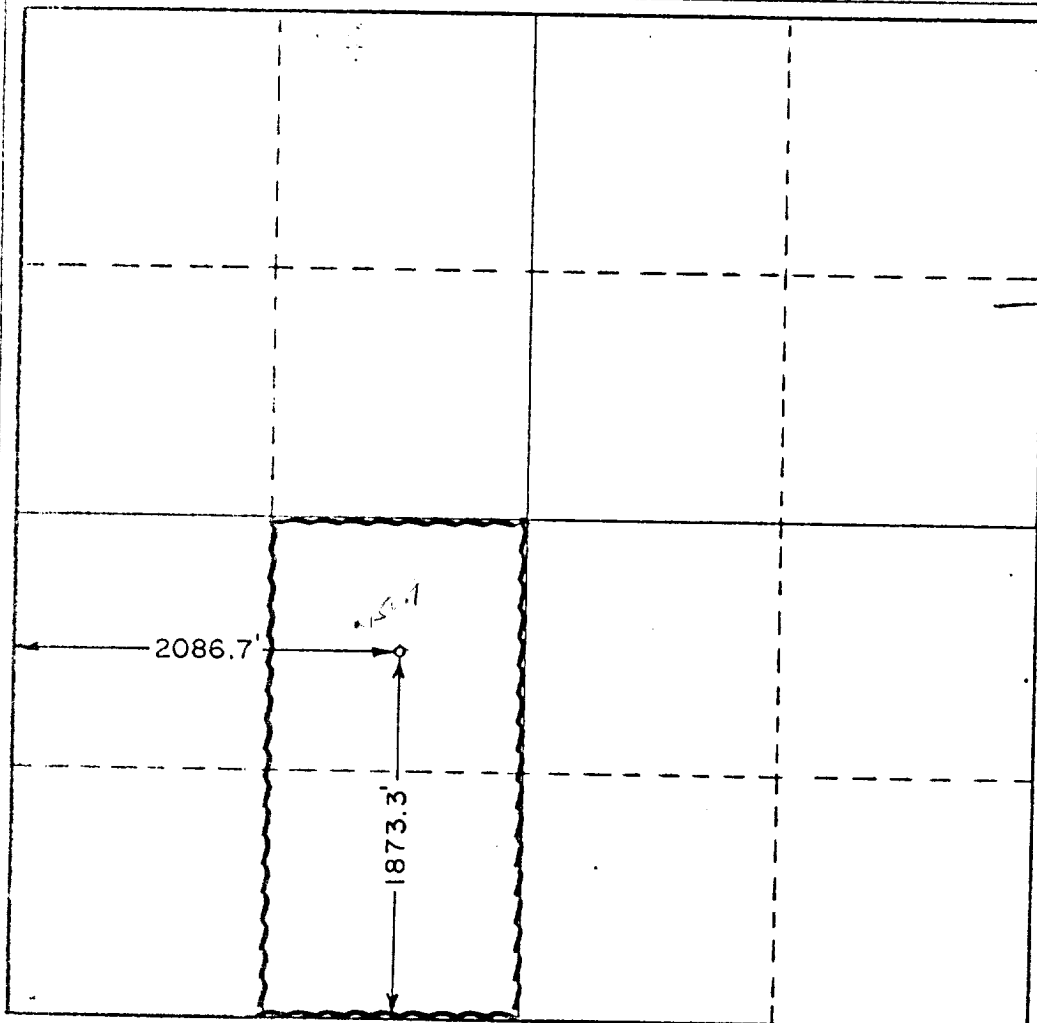
- Outline the acreage dedicated to the subject well by colored pencil or hachure marks on the plat below.
- If more than one lease is dedicated to the well, outline each and identify the ownership thereof (both as to working interest and royalty).
- If more than one lease of different ownership is dedicated to the well, have the interests of all owners been consolidated by communitization, unitization, force-pooling, etc?

☒ Yes ☐ No If answer is "yes," type of consolidation _____

If answer is "no," list the owners and tract descriptions which have actually been consolidated. (Use reverse side of this form if necessary.) _____

No allowable will be assigned to the well until all interests have been consolidated (by communitization, unitization, forced-pooling, or otherwise) or until a non-standard unit, eliminating such interests, has been approved by the Commission.

79.96 ac



CERTIFICATION

I hereby certify that the information contained herein is true and complete to the best of my knowledge and belief.

Name _____

Position _____

AREA SUPT

Company _____

PAN AMERICAN PETROLEUM CORPORATION

Date _____

9-14-66

I hereby certify that the well location shown on this plat was plotted from field notes of actual surveys made by me or under my supervision, and that the same is true and correct to the best of my knowledge and belief.

Date Surveyed _____

JUNE 21, 1966

Registered Professional Engineer and/or Land Surveyor

John W. West

Certificate No. _____

NM PE & LS No. 676