

NEW MEXICO OIL CONSERVATION COMMISSION
WELL LOCATION AND ACREAGE DEDICATION PLAT

Form No. 1
Supersedes No. 1
Effective 1-1-65

All distances must be from the outer boundaries of the Section

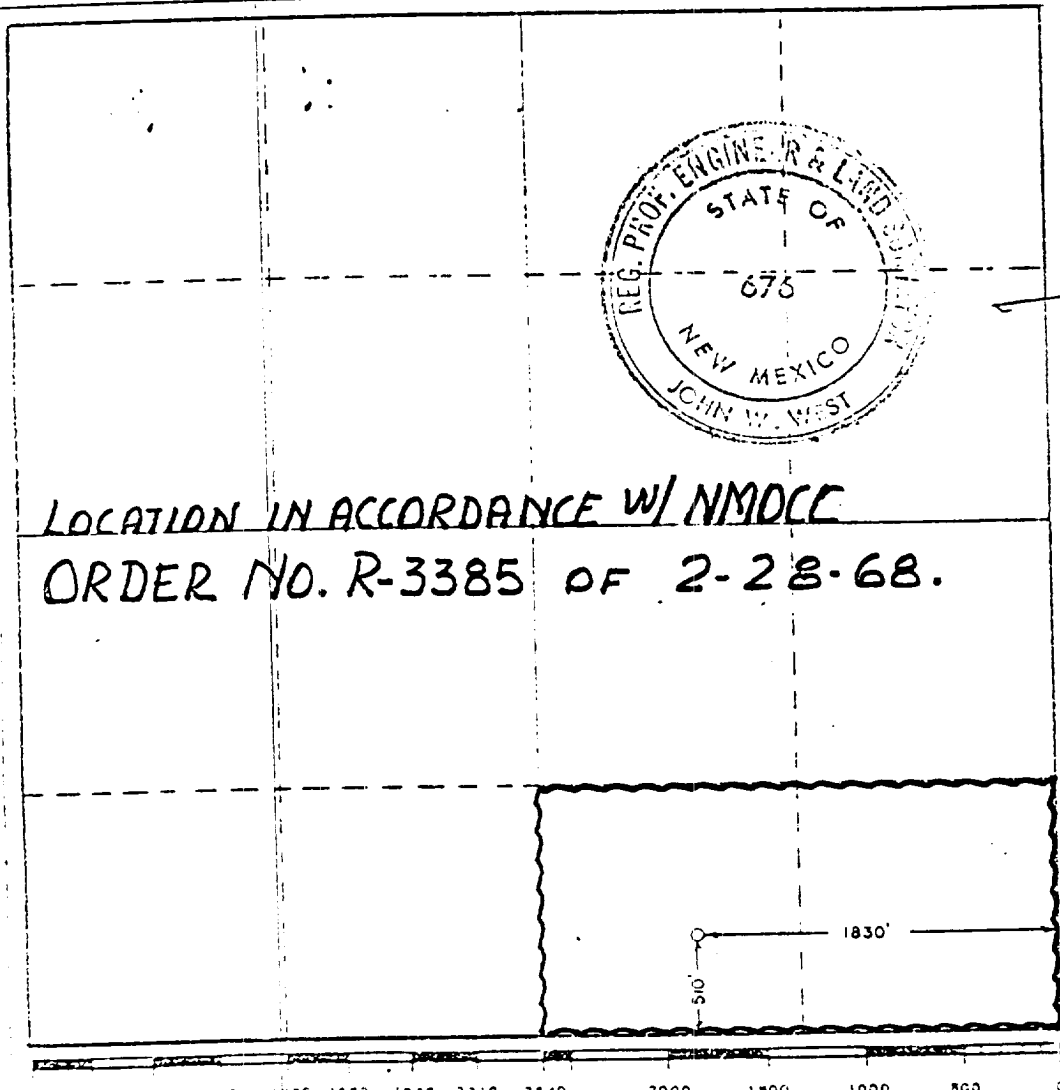
PAN AMERICAN PETROLEUM CORP.			Lease SOUTH MATIX UNIT FEDERAL		24
Section	15	Township	24 SOUTH	Range	37 EAST
County	LEA				
Approximate Location of Well:					
510	feet from the	SOUTH	line and	1830	feet from the
					EAST
Ground Level Elev.	Predominant Formation		Foot		Location of Acreage
3260	Fusselman		FOWLER Fusselman		80 40

1. Outline the acreage dedicated to the subject well by colored pencil or hatchure marks on the plat below.
2. If more than one lease is dedicated to the well, outline each and identify the ownership thereof (both as to working interest and royalty).
3. If more than one lease of different ownership is dedicated to the well, have the interests of all owners been consolidated by communitization, unitization, force-pooling, etc?

☐ Yes ☐ No If answer is "yes," type of consolidation _____

If answer is "no," list the owners and tract descriptions which have actually been consolidated. (Use reverse side of this form if necessary.) _____

No allowable will be assigned to the well until all interests have been consolidated (by communitization, unitization, forced-pooling, or otherwise) or until a non-standard unit, eliminating such interests, has been approved by the Commission.



CERTIFICATION

I hereby certify that the information contained herein is true and complete to the best of my knowledge and belief.

Tom G. Tullos

Name Tom G. Tullos

Title Sr. Business Analyst

Company Amoco Production Company

Date April 25, 1996

I hereby certify that the well location shown on this plat was plotted from field notes of actual surveys made by me or under my supervision, and that the same is true and correct to the best of my knowledge and belief.

MARCH 7, 1968

Date Surveyed
Registered Professional Engineer and/or Land Surveyor

John W. West
676