

NO. OF COPIES RECEIVED	
DISTRIBUTION	
SANTA FE	
FILE	
U.S.G.S.	
LAND OFFICE	
OPERATOR	

NEW MEXICO OIL CONSERVATION COMMISSION

Form C-101
Revised 1-1-65

5A. Indicate Type of Lease

STATE ☒ FEE ☐

5. State Oil & Gas Lease No.

APPLICATION FOR PERMIT TO DRILL, DEEPEN, OR PLUG BACK

1a. Type of Work		7. Unit Agreement Name	
b. Type of Well OIL WELL <input checked="" type="checkbox"/> GAS WELL <input type="checkbox"/> OTHER <input type="checkbox"/>		8. Farm or Lease Name # State 7	
2. Name of Operator Apexco, Inc. Apache Exploration Corporation		9. Well No. #2	
3. Address of Operator P. O. Box 2299, Tulsa, Oklahoma 74101		10. Field and Pool, or Wildcat Flying M	
4. Location of Well UNIT LETTER N LOCATED 660 FEET FROM THE South LINE AND 1980 FEET FROM THE West LINE OF SEC. 7 TWP. 9S RGE. 33E NMPM		12. County Lea	
19. Proposed Depth 4300		19A. Formation San Andreas	
20. Rotary or C.T. Rotary		21. Elevations (Show whether DF, RT, etc.) Gr 4395 Approx.	
21A. Kind & Status Plug, Bond Statewide Active		21B. Drilling Contractor Sitton & Norton	
22. Approx. Date Work will start June 20, 1973			

PROPOSED CASING AND CEMENT PROGRAM

SIZE OF HOLE	SIZE OF CASING	WEIGHT PER FOOT	SETTING DEPTH	SACKS OF CEMENT	EST. TOP
12 1/4"	8 5/8"	24#	200	To Circulate	Surface
7 7/8"	4 1/2"	9.5#	4,300	200	3,600

Operator will install double-ram blowout preventers rated at 3,000# wp, 6,000# test to assure proper well control at all times.

APPROVAL VALID
FOR 90 DAYS UNLESS
DRILLING COMMENCED,
EXPIRES 9-25-73

IN ABOVE SPACE DESCRIBE PROPOSED PROGRAM: IF PROPOSAL IS TO DEEPEN OR PLUG BACK, GIVE DATA ON PRESENT PRODUCTIVE ZONE AND PROPOSED NEW PRODUCTIVE ZONE. GIVE BLOWOUT PREVENTER PROGRAM, IF ANY.

I hereby certify that the information above is true and complete to the best of my knowledge and belief.

Signed Lloyd C. Somers Title Regional Production Manager Date June 4, 1973

(This space for State Use)

APPROVED BY [Signature] TITLE [Signature] DATE [Signature]

CONDITIONS OF APPROVAL, IF ANY:

RECEIVED

JUN 18 1979

OIL CONSERVATION COMM.
HOBBES, N. H.

NEW MEXICO OIL CONSERVATION COMMISSION
WELL LOCATION AND ACREAGE DEDICATION PLAT

Form C-102
Supersedes C-128
Effective 1-1-65

All distances must be from the outer boundaries of the Section

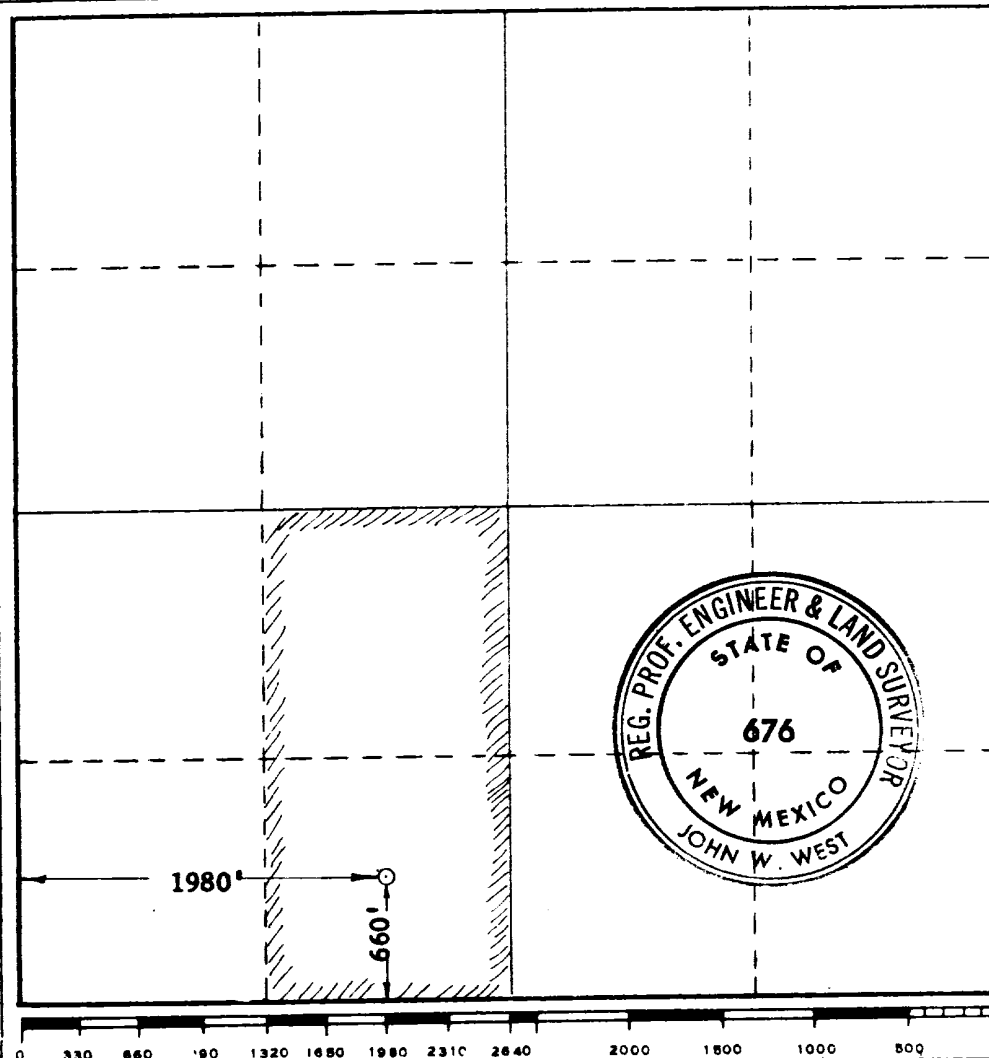
Operator Apache Exploration Corporation APACHE CORPORATION			Lease NEW MEXICO STATE 7		Well No. 2
Unit Letter N	Section 7	Township 9 SOUTH	Range 33 EAST	County LEA	
Actual Footage Location of Well: 660 feet from the SOUTH line and 1980 feet from the WEST line					
Ground Level Elev. 4406'	Producing Formation SAN ANDRES		Pool FLYING "M"		Dedicated Acreage: E 1/2 SW 1/4 80 Acres

1. Outline the acreage dedicated to the subject well by colored pencil or hachure marks on the plat below.
2. If more than one lease is dedicated to the well, outline each and identify the ownership thereof (both as to working interest and royalty).
3. If more than one lease of different ownership is dedicated to the well, have the interests of all owners been consolidated by communitization, unitization, force-pooling, etc?

☐ Yes ☐ No If answer is "yes," type of consolidation _____

If answer is "no," list the owners and tract descriptions which have actually been consolidated. (Use reverse side of this form if necessary.) _____

No allowable will be assigned to the well until all interests have been consolidated (by communitization, unitization, forced-pooling, or otherwise) or until a non-standard unit, eliminating such interests, has been approved by the Commission.



CERTIFICATION

I hereby certify that the information contained herein is true and complete to the best of my knowledge and belief.

Name *John W. West*
Position **AGENT**
Company **Apache Exploration Corp.**
APACHE CORPORATION

Date **JUNE 2, 1973**

I hereby certify that the well location shown on this plat was plotted from field notes of actual surveys made by me or under my supervision, and that the same is true and correct to the best of my knowledge and belief.

Date Surveyed **JUNE 2, 1973**

Registered Professional Engineer and/or Land Surveyor

John W. West
Certificate No. **676**