

ILLEGIBLE

NEW MEXICO OIL CONSERVATION COMMISSION WELL LOCATION AND ACREAGE DEDICATION PLAT

Form C-102
Supersedes C-128
Effective 1-1-65

All distances must be from the outer boundaries of the Section

| | | | | | |
|---|--|-----------------------------|--|---------------------------------------|----------------------|
| Operator STALLWORTH OIL AND GAS | | | Lease TURNER STATE OF NEW MEXICO | | Well No. 1 |
| Map Letter E | Section 24 | Township 17 South | Range 36 East | County LEA | |
| Actual Footage Location of Well: 2810 feet from the North line and 330 feet from the West line | | | | | |
| Ground Level Elev. 3820 3617 | Producing Formation San Andres | | Pool Spencer (San Andres) | Dedicated Acreage: 40 Acres | |

- Outline the acreage dedicated to the subject well by colored pencil or hatchure marks on the plat below.
- If more than one lease is dedicated to the well, outline each and identify the ownership thereof (both as to working interest and royalty).
- If more than one lease of different ownership is dedicated to the well, have the interests of all owners been consolidated by communitization, unitization, force-pooling, etc?

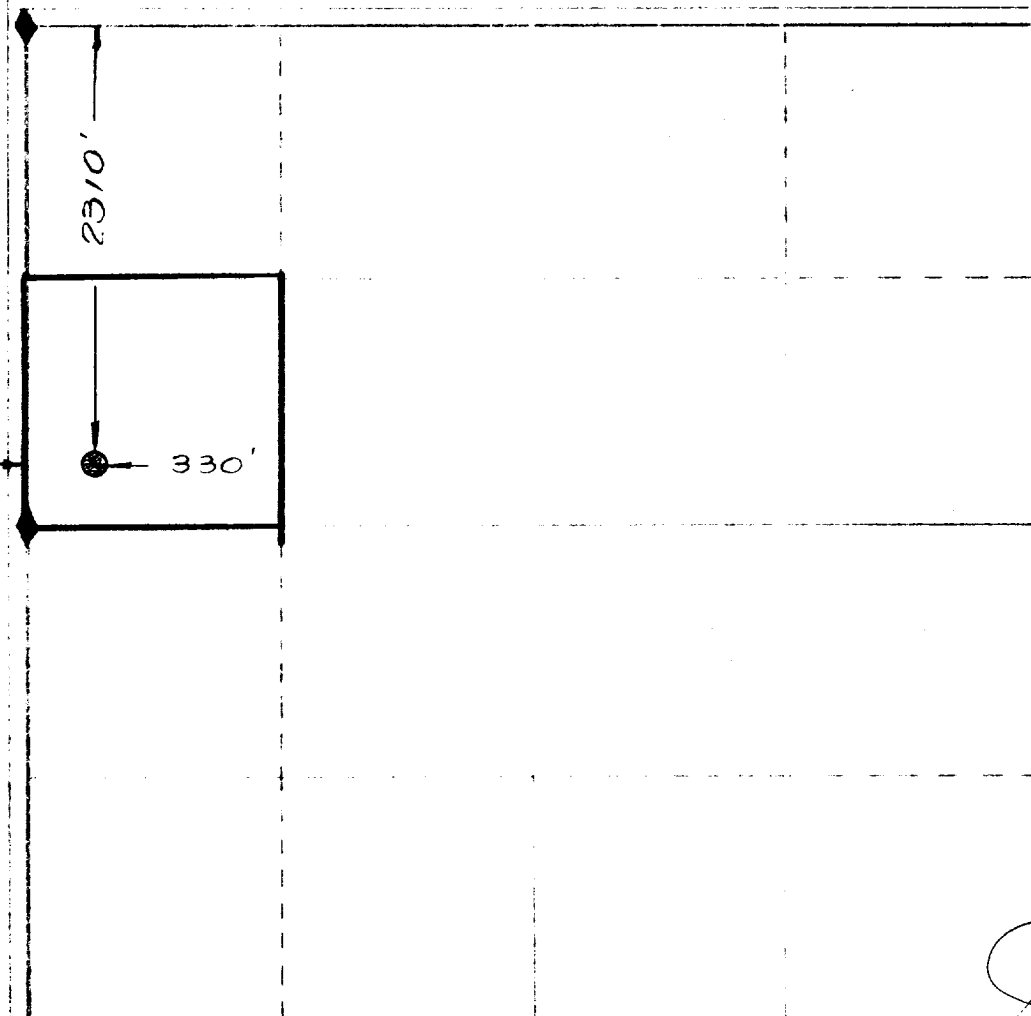
☐ Yes ☒ No

If answer is "yes," type of consolidation

SW/4NE/4 Section 24 is a common lease; no communitization is required.

If answer is "no," list the owners and tract descriptions which have actually been consolidated. (Use reverse side of this form if necessary.)

No allowable will be assigned to the well until all interests have been consolidated (by communitization, unitization, forced-pooling, or otherwise) or until a non-standard unit, eliminating such interests, has been approved by the Commission.



CERTIFICATION

I hereby certify that the information contained herein is true and complete to the best of my knowledge and belief.

Name

James L. Young

Position

Land Manager

Company

Stallworth Oil & Gas

Date

March 11, 1974

I hereby certify that the well location shown on this plat was plotted from field notes of actual surveys made by me or under my supervision, and that the same is true and correct to the best of my knowledge and belief.

Date Surveyed

March 9, 1974

Registered Professional Engineer and/or Land Surveyor

Certificate No.

1559

140 660 90 1320 1650 1980 2310 2640 2970 3300 3630 3960 4290 4620 4950 5280 5610 5940 6270 6600

RECEIVED

MAR 11 1955
OIL CONSERVATION COMM.
HOBBS, N. M.