

NO. OF COPIES RECEIVED

DISTRIBUTION

SANTA FE

FILE

U.S.G.S.

LAND OFFICE

OPERATOR

NEW MEXICO OIL CONSERVATION COMMISSION

Form C-101
Revised 1-1-65

5A. Indicate Type of Lease
STATE ☒ FEE ☐

5. State Oil & Gas Lease No.
B 2657

APPLICATION FOR PERMIT TO DRILL, DEEPEN, OR PLUG BACK

1a. Type of Work
b. Type of Well DRILL ☒ DEEPEN ☐ PLUG BACK ☐
OIL WELL ☒ GAS WELL ☐ OTHER ☐ SINGLE ZONE ☒ MULTIPLE ZONE ☐

2. Name of Operator
CONTINENTAL OIL COMPANY

3. Address of Operator
Box 460, HOBBS, N. M. 88240

4. Location of Well
UNIT LETTER **M** LOCATED **330** FEET FROM THE **South** LINE
AND **660'** FEET FROM THE **West** LINE OF SEC. **16** TWP. **24S** RGE. **37E** NMPM

7. Unit Agreement Name

8. Farm or Lease Name
STATE A-16

9. Well No.
1

10. Field and Pool, or Wildcat
LANGLE MATTIX

12. County
LEA

19. Proposed Depth
3650'

19A. Formation
Seven Rivers - Queen

20. Rotary or C.T.
Rotary

21. Elevations (Show whether DF, RT, etc.)

21A. Kind & Status Plug. Bond
Blanket Bond on file

21B. Drilling Contractor

22. Approx. Date Work will start
8-1-74

PROPOSED CASING AND CEMENT PROGRAM

SIZE OF HOLE	SIZE OF CASING	WEIGHT PER FOOT	SETTING DEPTH	SACKS OF CEMENT	EST. TOP
12 1/4"	8 5/8"	20#	400'	260	Circ. to 52'
7 7/8"	5 1/2"	14#	3650'	300	2300'

It is proposed to drill a straight hole to a TD of 3650' and complete as a Seven Rivers - Queen oil well.

APPROVAL VALID
FOR 90 DAYS UNLESS
DRILLING COMMENCED,

EXPIRES **10-18-74**

IN ABOVE SPACE DESCRIBE PROPOSED PROGRAM: IF PROPOSAL IS TO DEEPEN OR PLUG BACK, GIVE DATA ON PRESENT PRODUCTIVE ZONE AND PROPOSED NEW PRODUCTIVE ZONE. GIVE BLOWOUT PREVENTER PROGRAM, IF ANY.

I hereby certify that the information above is true and complete to the best of my knowledge and belief.

Signed **[Signature]** Title **SR. ANALYST** Date **7-17-74**

(This space for State Use)

APPROVED BY **[Signature]** TITLE DATE

CONDITIONS OF APPROVAL, IF ANY:

DMOCC-5, File

NEW MEXICO OIL CONSERVATION COMMISSION
WELL LOCATION AND ACREAGE DEDICATION F

Form C-102
Supersedes C-128
Effective 1-4-65

All distances must be from the outer boundaries of the Section.

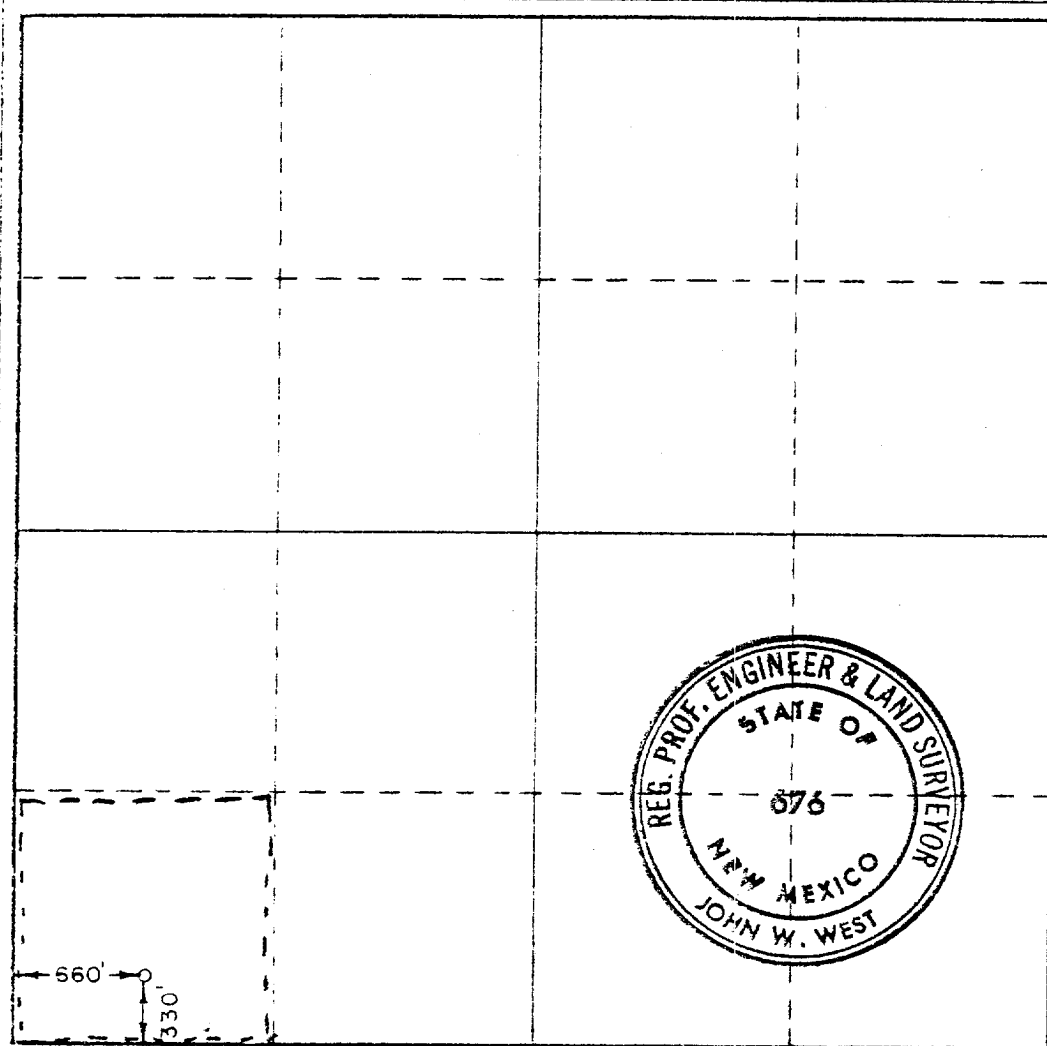
Operator Continental Oil Company			Lease State A-16		Well No. 1
Grid Letter M	Section 16	Township 24 South	Range 37 East	County Lea	
Actual Well Location of Well: 330 feet from the South line and 660 feet from the West line					
Ground Level Elev. 3241.0	Producing Formation SAN RIVER QUEEN		Pool Langlie Martin San River		Dedicated Acreage: 40 Acres

1. Outline the acreage dedicated to the subject well by colored pencil or hatchure marks on the plat below.
2. If more than one lease is dedicated to the well, outline each and identify the ownership thereof (both as to working interest and royalty).
3. If more than one lease of different ownership is dedicated to the well, have the interests of all owners been consolidated by communitization, unitization, force-pooling, etc?

☐ Yes ☐ No If answer is "yes," type of consolidation _____

If answer is "no," list the owners and tract descriptions which have actually been consolidated. (Use reverse side of this form if necessary.) _____

No allowable will be assigned to the well until all interests have been consolidated (by communitization, unitization, forced-pooling, or otherwise) or until a non-standard unit, eliminating such interests, has been approved by the Commission.



CERTIFICATION

I hereby certify that the information contained herein is true and complete to the best of my knowledge and belief.

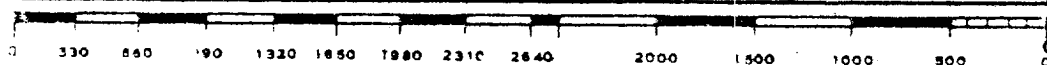
Name *John West*
Position *Sr. Analyst*
Company *CONTINENTAL OIL CO.*
Date *7-17-74*

I hereby certify that the well location shown on this plat was plotted from field notes of actual surveys made by me or under my supervision, and that the same is true and correct to the best of my knowledge and belief.

Date Surveyed
July 5, 1974

Registered Professional Engineer and/or Land Surveyor

John W. West
Certificate No. **676**



173

173

173