

UNITED STATES
DEPARTMENT OF THE INTERIOR
GEOLOGICAL SURVEY

APPLICATION FOR PERMIT TO DRILL, DEEPEN, OR PLUG BACK

1a. TYPE OF WORK

DRILL ☒DEEPEN ☐PLUG BACK ☐

b. TYPE OF WELL

OIL
WELL ☐GAS
WELL ☒

OTHER

SINGLE
ZONE ☒MULTIPLE
ZONE ☐

2. NAME OF OPERATOR

CONTINENTAL OIL COMPANY

3. ADDRESS OF OPERATOR

Box 460, Hobbs, N.M. 88240

4. LOCATION OF WELL (Report location clearly and in accordance with any State requirements.)

At surface

2310' FNL & 1980' FEL of SEC. 14

At proposed prod. zone

SAME

14. DISTANCE IN MILES AND DIRECTION FROM NEAREST TOWN OR POST OFFICE*

10. DISTANCE FROM PROPOSED*

LOCATION TO NEAREST
PROPERTY OR LEASE LINE, FT.
(Also to nearest drlg. unit line, if any)

16. NO. OF ACRES IN LEASE

160

17. NO. OF ACRES ASSIGNED
TO THIS WELL

160

18. DISTANCE FROM PROPOSED LOCATION*
TO NEAREST WELL, DRILLING, COMPLETED,
OR APPLIED FOR, ON THIS LEASE, FT.

19. PROPOSED DEPTH

3810'

20. ROTARY OR CABLE TOOLS

ROTARY

21. ELEVATIONS (Show whether DF, RT, GR, etc.)

3552' GR. (EST.)

22. APPROX. DATE WORK WILL START*

5-1-76

23.

PROPOSED CASING AND CEMENTING PROGRAM

SIZE OF HOLE	SIZE OF CASING	WEIGHT PER FOOT	SETTING DEPTH	QUANTITY OF CEMENT
12 1/4"	8 5/8"	24#	400'	700 SK. - CIRC. TO SURF.
7 7/8"	5 1/2"	14#	3810'	325 SK.

IT IS PROPOSED TO DRILL A STRAIGHT HOLE
TO A T.D. OF 3810' & COMPLETE AS A
EUMONT GAS WELL.

MUD PROGRAM: 0-400', SPUD MUD; 400'-3810',
9.0# - 10.0# SALT GEL.

SEE ATTACHED FOR BLOWOUT PREVENTER PROGRAM.

IN ABOVE SPACE DESCRIBE PROPOSED PROGRAM: If proposal is to deepen or plug back, give data on present productive zone and proposed new productive zone. If proposal is to drill or deepen directionally, give pertinent data on subsurface locations and measured and true vertical depths. Give blowout preventer program, if any.

24. SIGNED Wm. A. Butterfield TITLE SR. ANALYST DATE 3-29-76
(This space for Federal or State office use)

PERMIT NO. _____

APPROVAL DATE _____

APPROVED BY _____

TITLE _____

CONDITIONS OF APPROVAL, IF ANY:

APPROVED
AMENDED
MAY 17 1976
ARTHUR R. BROWN
DISTRICT ENGINEER

*See Instructions On Reverse Side

U.S.G.S (G) - PARTNER (R) - I, -

U. S. GEOLOGICAL SURVEY
P. O. Box 1157
Hobbs, New Mexico 88240

HOBBS DISTRICT

Continental Oil Co.
No. 97 SEMU Eumont
Sec. 14-20S-37E
Lea County, N. M.

Above Data Required on Well Sign

CONDITIONS OF APPROVAL

1. Drilling operations authorized are subject to the attached sheet for general requirements for drilling and producing operations.
2. Notify this office (telephone (505) 393-3612) when the well is spudded and in sufficient time for a representative to witness cementing operations.
3. Immediate notice is required of all blowouts, fires, spills, and accidents involving life-threatening injuries or loss of life.
4. Secure prior approval before changing the approved drilling program or commencing plugging operations, plug-back work, casing repair work, or corrective cementing operations.
5. Blowout prevention equipment is to be installed, tested, and in working order before drilling below the surface casing and shall be maintained ready for use until drilling operations are completed.
6. A kill-line is to be properly installed and is not to be used as a fill-up line.
7. Blowout preventers are to have proper casing rams when running casing.
8. Drill string safety valve(s) to fit all pipe in the drill string to be maintained on the rig floor while drilling operations are in progress.
9. Blowout prevention drills are to be conducted as necessary to assure that equipment is operational and that each crew is properly trained to carry out emergency duties. All BOP tests and drills are to be recorded on the driller's log.
10. 8-5/8" surface casing should be set in the Rustler anhydrite formation and cement circulated to the surface. If surface casing is set at a lesser depth, the 5½" casing must be cemented from the casing shoe to the surface or cemented to the surface through a stage tool set at least 50 feet below the top of the Rustler.
11. Operations must be in compliance with the provisions of the landowner agreement concerning surface disturbance and surface restoration.

NEW MEXICO OIL CONSERVATION COMMISSION
WELL LOCATION AND ACREAGE DEDICATION PLAT

Form 1-1-72
Supersedes 1-1-28
Effective 1-1-75

All distances must be from the outer boundaries of the Section

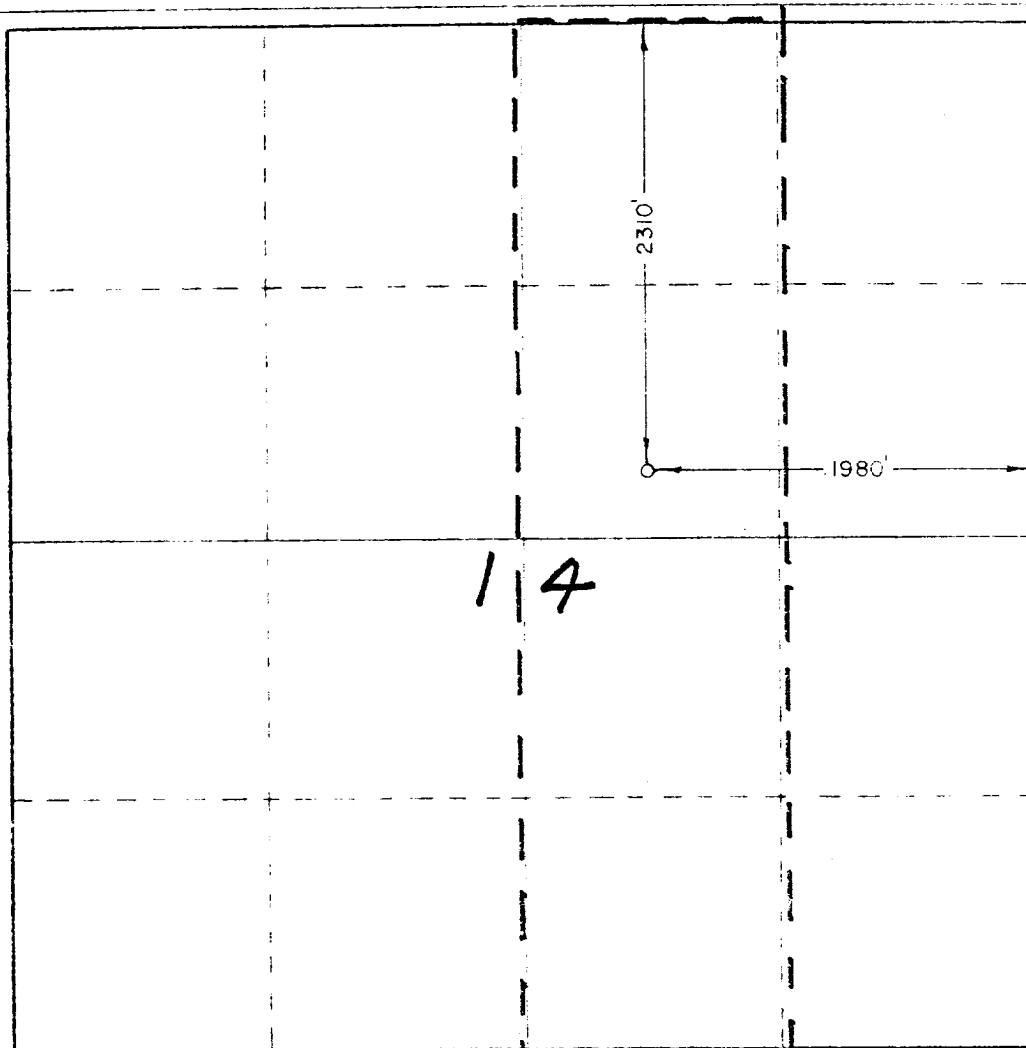
Operator Continental Oil Company			Lease SEMU Eumont		Acres 97
Section G	Section 14	Township 20 South	Range 37 East	County Lea	
Actual Plot Location of Well: 2310 feet from the North line and 1980 feet from the East line					
Ground Elev. (ft.) 3551.8		Produced by GRAYBURG		Produced by EUMONT GAS	
		Port 160			

1. Outline the acreage dedicated to the subject well by colored pencil or hatchure marks on the plat below.
2. If more than one lease is dedicated to the well, outline each and identify the ownership thereof (both as to working interest and royalty).
3. If more than one lease of different ownership is dedicated to the well, have the interests of all owners been consolidated by communitization, unitization, force-pooling, etc?

☐ Yes ☐ No If answer is "yes," type of consolidation _____

If answer is "no," list the owners and tract descriptions which have actually been consolidated (Use reverse side of this form if necessary) _____

No allowable will be assigned to the well until all interests have been consolidated (by communitization, unitization, forced-pooling, or otherwise) or until a non-standard unit, eliminating such interests, has been approved by the Commission.



CERTIFICATION

I hereby certify that the information contained herein is true and complete to the best of my knowledge and belief

Wm. A. Butterfield
SR. ANALYST
CONTINENTAL OIL CO.
3-29-76

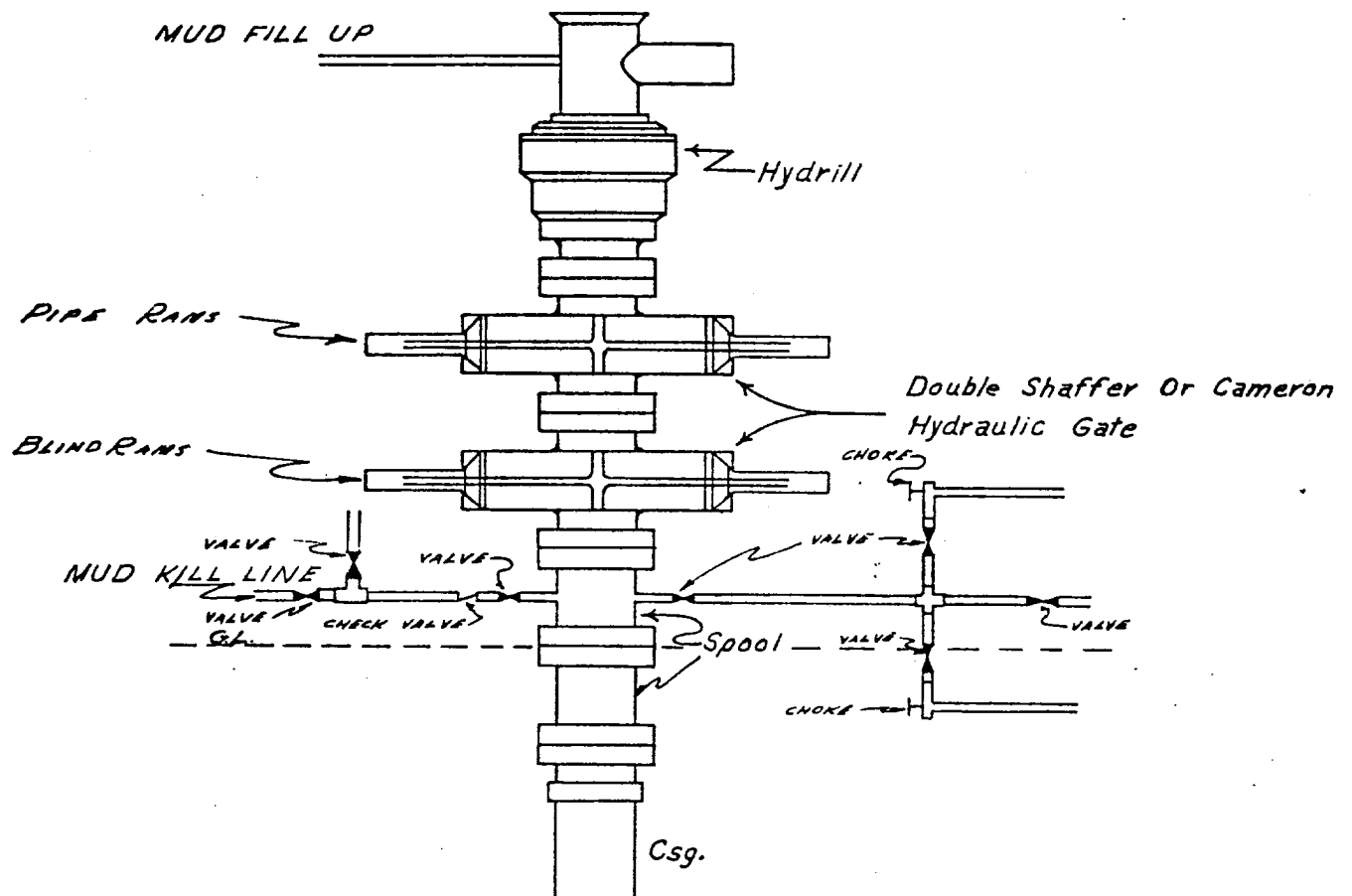
I hereby certify that the well location shown on this plat was plotted from field notes of actual surveys made by me or under my supervision and that the same is true and correct to the best of my knowledge and belief

March 25, 1976
Professional Engineer
No. 673
John W. Clark
JOHN W. CLARK

0 330 660 990 1320 1650 1980 2310 2640 2970 3300 3630

CONTINENTAL OIL COMPANY
Blow-out Preventer Specifications

SEMU EUMONT No. 97



NOTE:

Manual and Hydraulic controls with closing unit no less than 75' from well head.
Remote controls on rig floor.

*DUE TO SUBSTRUCTURE CLEARANCE,
HYDRILL MAY OR MAY NOT BE USED.*

SL 14 EUMONT No. 97

Development Plan For Surface Use

1. Existing roads including location of the exit from the main highway

See Attached Map

2. Planned access roads

See Below and Attached Map

(a) Length and width of new road (b) Roads will be compacted

12' X 1200'

3. Location of existing wells

See Attached Map

4. Lateral roads to well location

See Attached Map

5. Location of tank batteries and flowlines

See Attached Map

6. Location and type of water supply

(✓) Water will be hauled to location () See attached map for location of proposed water lines

7. Methods for handling waste disposal

All litter and scrap material will be disposed of by burying in a trash pit with a minimum cover of 24 inches of dirt.

8. and 9. Location of camps and airstrips

There are no camps or airstrips contemplated to serve this lease.

10. Location of layout to include position of the rig, mud tanks, reserve pits, burn pits, pipe racks, etc.

See Below and Attached plat

(a) Size of drilling pad (b) Drilling pad ✓ compacted

200' X 250'

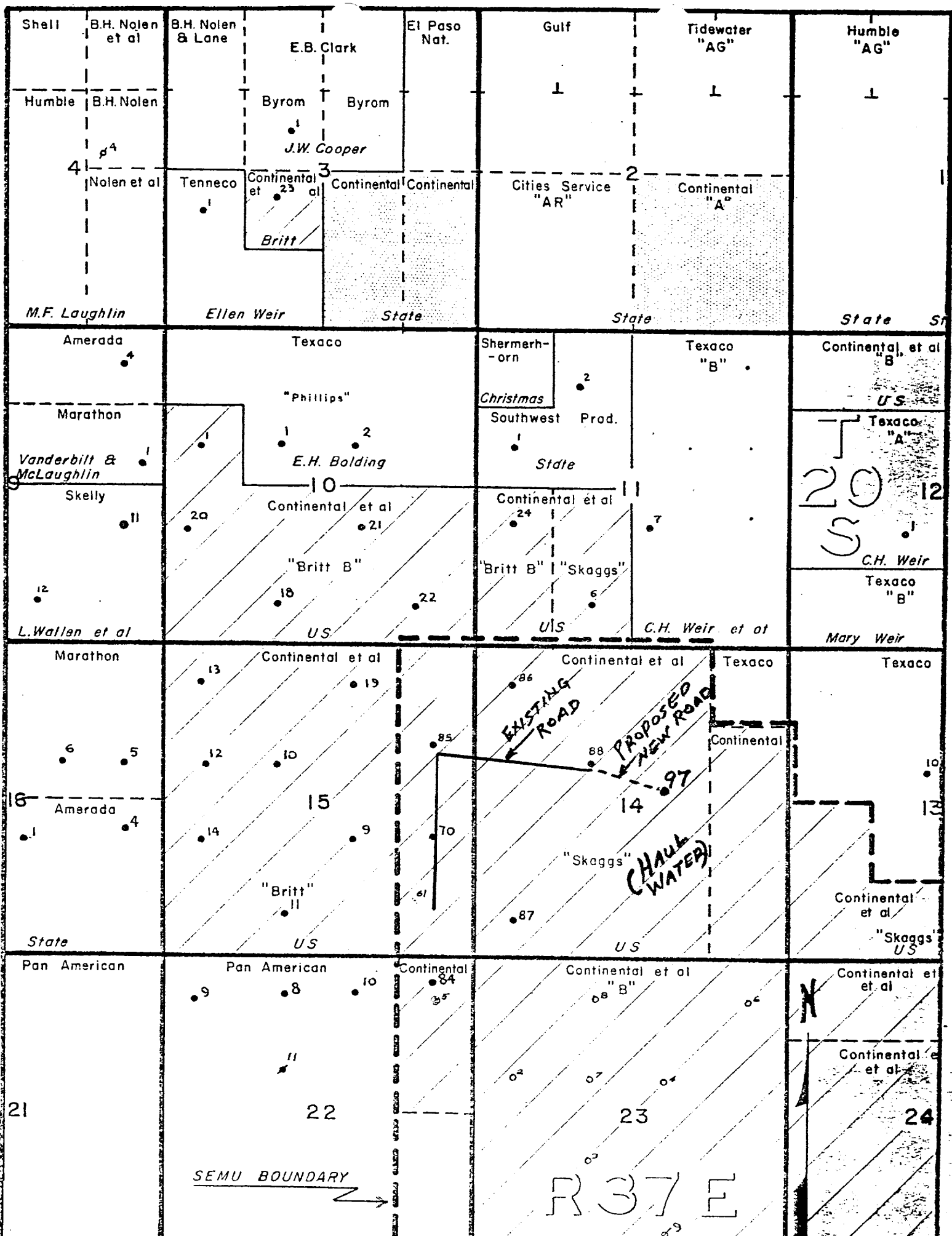
11. Plans for restoration of the surface

Surface will be levelled and properly conditioned.

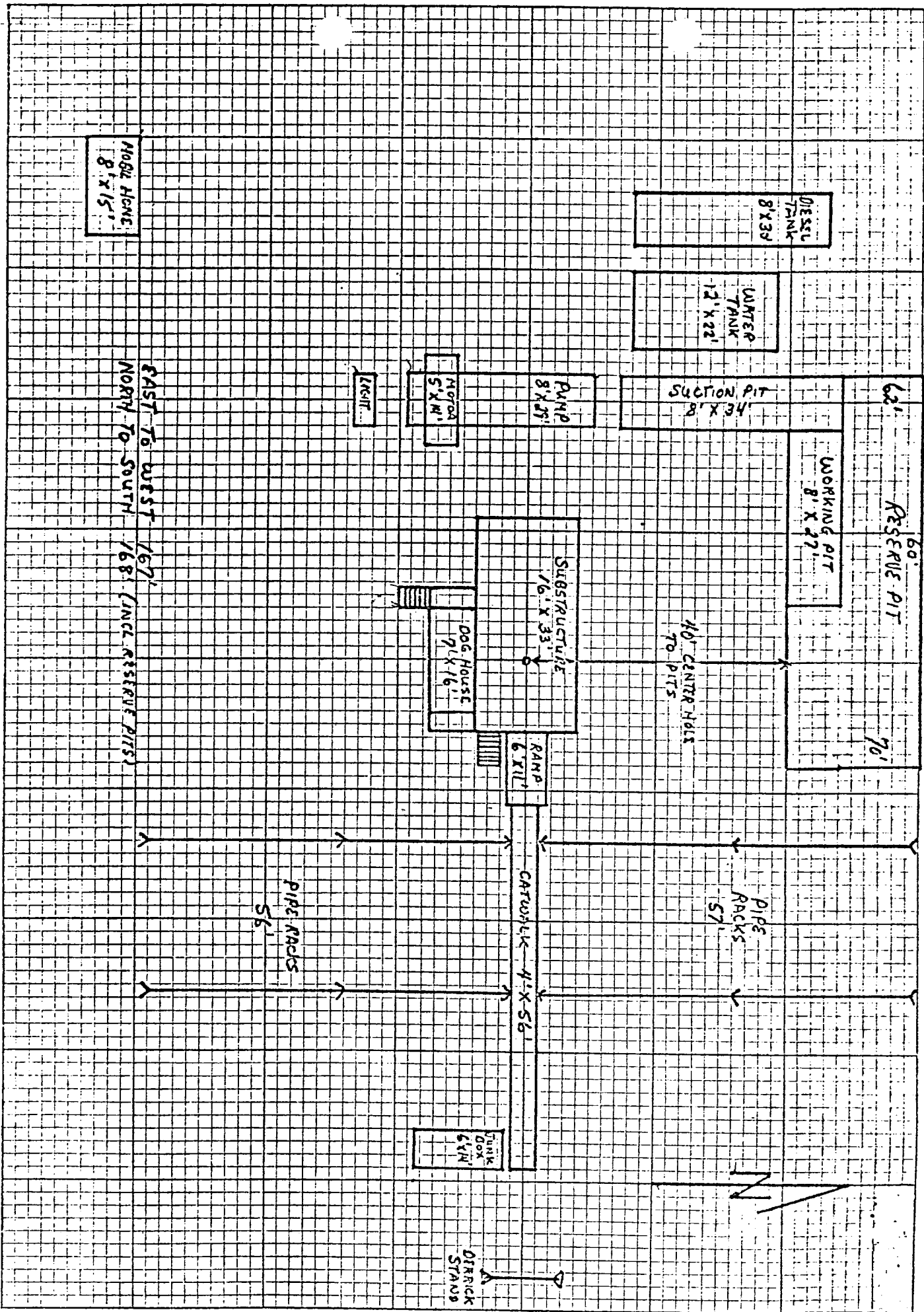
12. Other information that may be used in evaluating the impact on environment

The terrain in this area is generally flat with very little vegetation. No streams or other major water sheds are located in this area.

SEMU BOUNDARY



SENA EMMONT No. 97



RECEIVED

(A) 10000

THE CONSERVATION COMM.
HOBBS, N. M.