

UNITED STATES
DEPARTMENT OF THE INTERIOR
GEOLOGICAL SURVEY

APPLICATION FOR PERMIT TO DRILL, DEEPEN, OR PLUG BACK

1a. TYPE OF WORK

DRILL ☒DEEPEN ☐PLUG BACK ☐

b. TYPE OF WELL

OIL
WELL ☐GAS
WELL ☐

OTHER

SINGLE
ZONE ☒MULTIPLE
ZONE ☐

2. NAME OF OPERATOR

Aztec Oil & Gas Company

3. ADDRESS OF OPERATOR

P.O. Box 837, Hobbs, New Mexico 88240

4. LOCATION OF WELL (Report location clearly and in accordance with any State requirements.)*

At surface

1980' FSL & 660' FEL, Sec 18-18s-33e

At proposed prod. zone

Cherry Canyon

14. DISTANCE IN MILES AND DIRECTION FROM NEAREST TOWN OR POST OFFICE*

10 miles southeast Maljamar, New Mexico

15. DISTANCE FROM PROPOSED*

LOCATION TO NEAREST
PROPERTY OR LEASE LINE, FT.
(Also to nearest drlg. unit line, if any)

660' FEL

18. DISTANCE FROM PROPOSED LOCATION*

TO NEAREST WELL, DRILLING, COMPLETED,
OR APPLIED FOR, ON THIS LEASE, FT.

3120'

16. NO. OF ACRES IN LEASE

640

19. PROPOSED DEPTH

5100

17. NO. OF ACRES ASSIGNED
TO THIS WELL

40

20. ROTARY OR CABLE TOOLS

Rotary

21. ELEVATIONS (Show whether DF, RT, GR, etc.)

3854 GA

22. APPROX. DATE WORK WILL START*

3/1/77

23.

PROPOSED CASING AND CEMENTING PROGRAM

| SIZE OF HOLE | SIZE OF CASING | WEIGHT PER FOOT | SETTING DEPTH | QUANTITY OF CEMENT |
|--------------|----------------|-----------------|---------------|---|
| 11 1/4" | 8 5/8" | 24# K-55 | 320' used | Sufficient to circulate |
| 7 7/8" | 5 1/2" | 14# J-55 | 5100' new | Sufficient to fill to base salt. Use D/V tool at 1450' to circu- late to surface. |

1. Condition hole & mud at 4600'. Drill with brine water to protect hole in salt section.
2. Run electric logs at total depth.
3. No abnormal pressures, temperatures, or hydrogen sulfide gas are anticipated.
4. Anticipated starting date - 3/1/77. Operations should require 3 to 4 weeks.
5. See attachment for pressure rating & hook-up for blow-out preventor to be used.
6. Surface formation - Quaternary.
7. Expect to enter oil producing zone at 5000' (Delaware Sand).

IN ABOVE SPACE DESCRIBE PROPOSED PROGRAM: If proposal is to deepen or plug back, give data on present productive zone and proposed new productive zone. If proposal is to drill or deepen directionally, give pertinent data on subsurface locations and measured and true vertical depths. Give blowout preventer program, if any.

24.

SIGNED Harry L. W. AllenTITLE District ClerkDATE 1/25/77

(This space for Federal or State office use)

PERMIT NO. _____

APPROVAL DATE _____

APPROVED BY _____

TITLE _____

CONDITIONS OF APPROVAL, IF ANY:

APPROVED
AS AMENDED

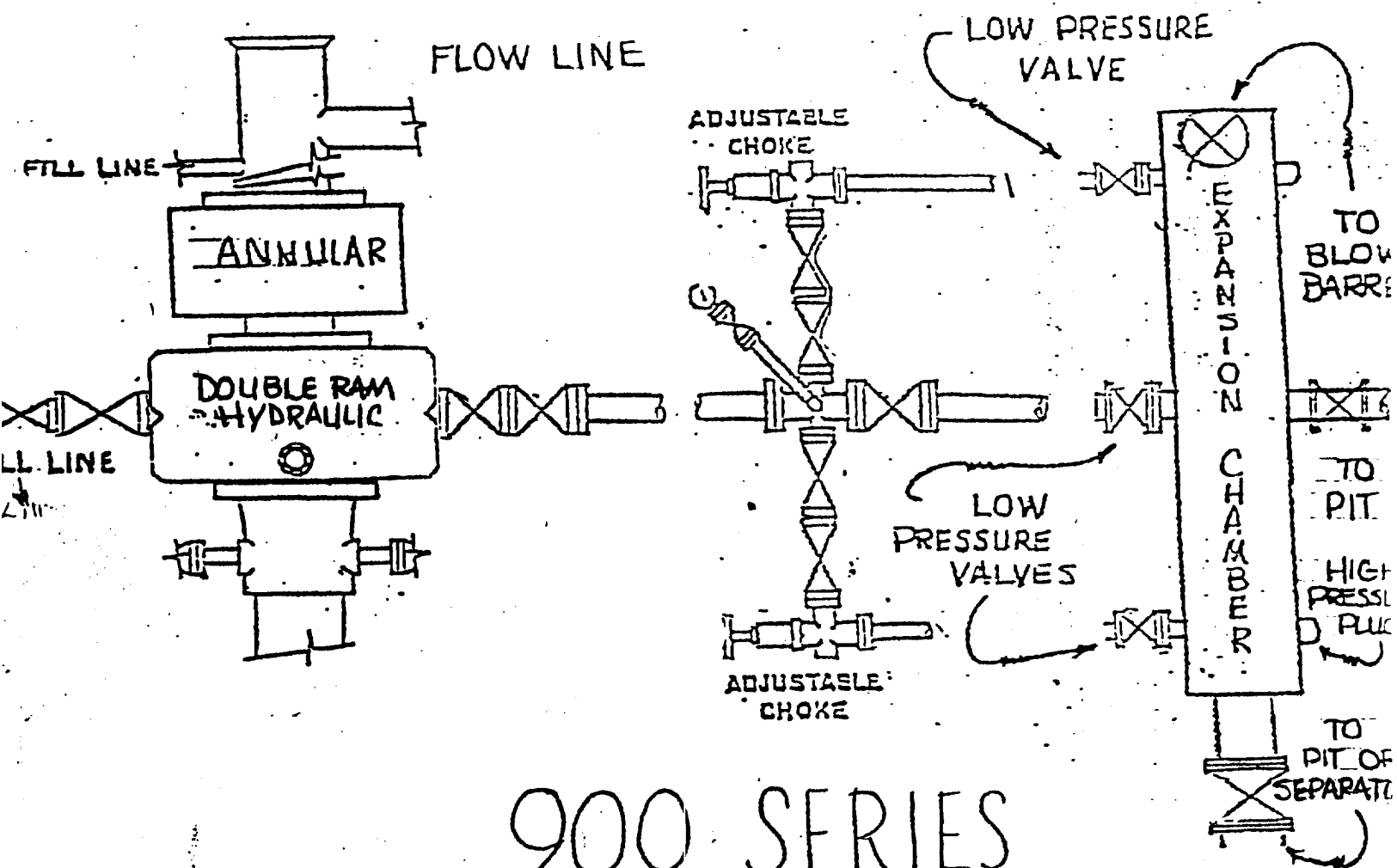
FEB 11 1977

BERNARD MOROZ
ACTING DISTRICT ENGINEER

*See Instructions On Reverse Side

RECEIVED

FEB 2 1977



900 SERIES

3000# PRESSURE RATING

MORANCO RIGS 5-6-9

RECEIVED

FEB 2 1977

NEW MEXICO OIL CONSERVATION COMMISSION
WELL LOCATION AND ACREAGE DEDICATION PLAT

Form O-102
 Supersedes O-128
 Effective 1-1-65

All distances must be from the outer boundaries of the Section

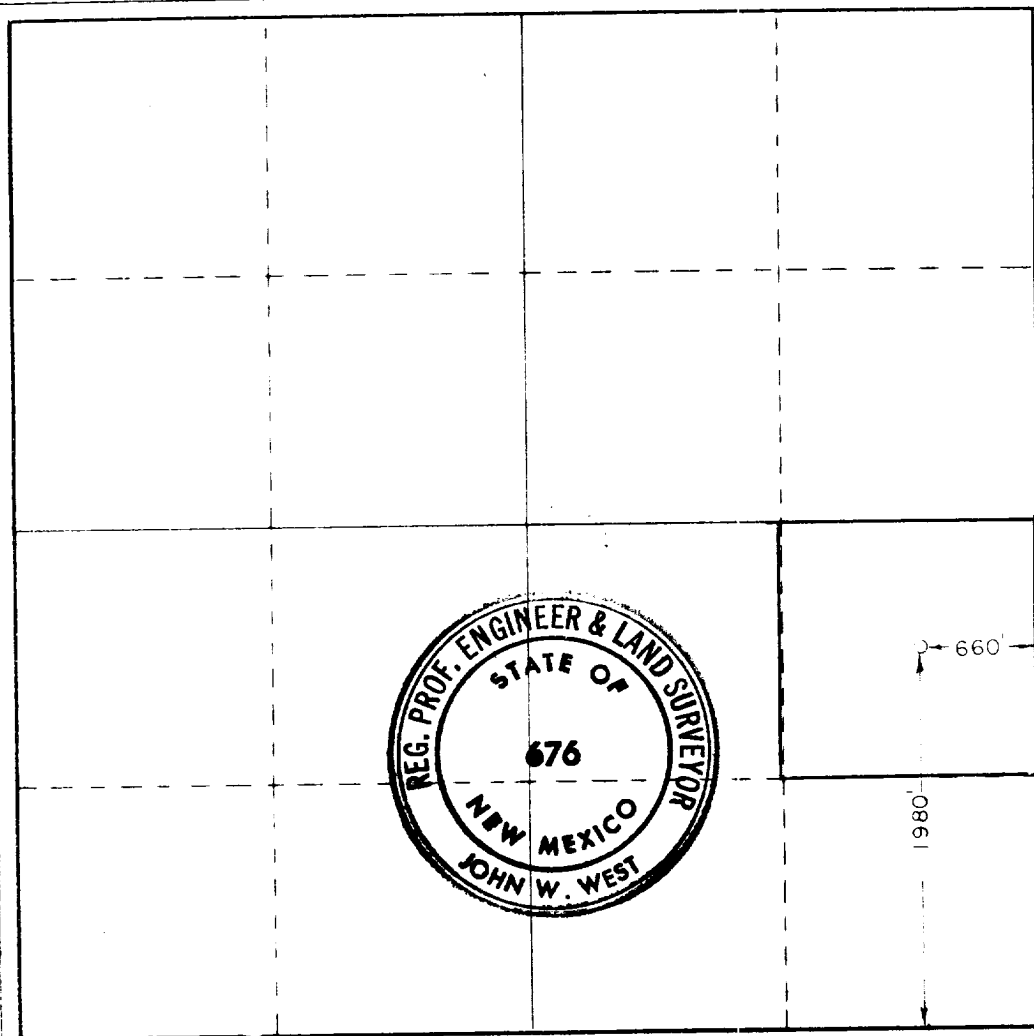
| | | | | | |
|---|---|-------------------------------------|-----------------------------|--------------------------------|----------------------|
| Operator AZTEC OIL & GAS COMPANY | | | Lease West Corbin | | Well No. 5 |
| Section I | Section 18 | Township 18 South | Range 33 East | County Lea | |
| Actual Well Location of Wells: 1980 feet from the south line and 660 feet from the east line | | | | | |
| Ground Level Elev. 3854.2 | Producing Formation Delaware Sand | Pool West Corbin Delaware | | Dedicated Acreage 40 | |

1. Outline the acreage dedicated to the subject well by colored pencil or hachure marks on the plat below.
2. If more than one lease is dedicated to the well, outline each and identify the ownership thereof (both as to working interest and royalty).
3. If more than one lease of different ownership is dedicated to the well, have the interests of all owners been consolidated by communitization, unitization, force-pooling, etc?

☐ Yes ☐ No If answer is "yes," type of consolidation _____

If answer is "no," list the owners and tract descriptions which have actually been consolidated. (Use reverse side of this form if necessary.) _____

No allowable will be assigned to the well until all interests have been consolidated (by communitization, unitization, forced-pooling, or otherwise) or until a non-standard unit, eliminating such interests, has been approved by the Commission.



CERTIFICATION

I hereby certify that the information contained herein is true and complete to the best of my knowledge and belief.

Name *Sam D. Wilson*
 Position **District Clerk**
 Company **Aztec Oil & Gas Co.**
 Date **December 28, 1976**

I hereby certify that the well location shown on this plat was plotted from field notes of actual surveys made by me or under my supervision, and that the same is true and correct to the best of my knowledge and belief.

Date Surveyed **Dec. 4, 1976**
 Registered Professional Engineer and/or Land Surveyor
John W. West
 Certificate No. **676**

330 660 990 1320 1650 1980 2310 2640 2970 3300 3630 3960 4290 4620 4950 5280 5610 5940 6270 6600

RECEIVED

FEB 14 1977

U.S. CONSTITUTION COMMISSION
WASHINGTON, D.C.