

NO. OF COPIES RECEIVED	
DISTRIBUTION	
SANTA FE	
FILE	
U.S.G.S.	
LAND OFFICE	
OPERATOR	

# NEW MEXICO OIL CONSERVATION COMMISSION

Form C-101  
Revised 1-1-65

5A. Indicate Type of Lease	
STATE <input type="checkbox"/>	FEE <input checked="" type="checkbox"/>
5. State Oil & Gas Lease No.	

## APPLICATION FOR PERMIT TO DRILL, DEEPEN, OR PLUG BACK

1a. Type of Work		7. Unit Agreement Name	
b. Type of Well OIL WELL <input checked="" type="checkbox"/> GAS WELL <input type="checkbox"/> OTHER <input type="checkbox"/>		3. Farm or Lease Name	
DEEPEN <input type="checkbox"/> PLUG BACK <input type="checkbox"/>		North Shore Woolworth	
2. Name of Operator		9. Well No.	
Husky Oil Company of Delaware		1	
3. Address of Operator		10. Field and Pool, or Wildcat	
600 S. Cherry Street, Denver, Colorado 80222		Wildcat	
4. Location of Well		12. County	
UNIT LETTER <u>L</u> LOCATED <u>660</u> FEET FROM THE <u>north</u> LINE		Lea	
AND <u>1980</u> FEET FROM THE <u>west</u> LINE OF SEC. <u>33</u> TWP. <u>24S</u> RGE. <u>37E</u> NMPM			
19. Proposed Depth		19A. Formation	
3600'+		50' into top of Queens	
20. Rotary or C.T.		Rotary	
21. Elevations (Show whether DE, RT, etc.)		22. Approx. Date Work will start	
3257' (Ground)		July 20, 1977	
21A. Kind & Status Plug. Bond		21B. Drilling Contractor	
State wide; current		W. E. K. Drilling	

### PROPOSED CASING AND CEMENT PROGRAM

SIZE OF HOLE	SIZE OF CASING	WEIGHT PER FOOT	SETTING DEPTH	SACKS OF CEMENT	EST. TOP
12 1/4"	8-5/8"	24.0	500'	250	surface
7-7/8"	4-1/2"	11.6	3600'	200	2722

Drill 12 1/4" hole to +500'. Run and cement +500' of 8-5/8" casing. Nipple up and test BOP's. Drill 7-7/8" hole to +3600'. Run logs and evaluate well. Run and cement +3600' of 4-1/2" casing if warranted by log evaluation. If the well is non-productive based on the log evaluation, it will be plugged in accordance with the New Mexico Oil Conservation Commission regulations. Unitized formations will be protected with casing if producer or cement if well is non-producer and plugged.

IN ABOVE SPACE DESCRIBE PROPOSED PROGRAM: IF PROPOSAL IS TO DEEPEN OR PLUG BACK, GIVE DATA ON PRESENT PRODUCTIVE ZONE AND PROPOSED NEW PRODUCTIVE ZONE. GIVE BLOWOUT PREVENTER PROGRAM, IF ANY.

I hereby certify that the information above is true and complete to the best of my knowledge and belief.

Signed C. H. Walter Title Drilling Engineer Date 6/27/77

(This space for State Use)

APPROVED BY [Signature] TITLE SECRETARY DATE JUL 26 1977

CONDITIONS OF APPROVAL, IF ANY:

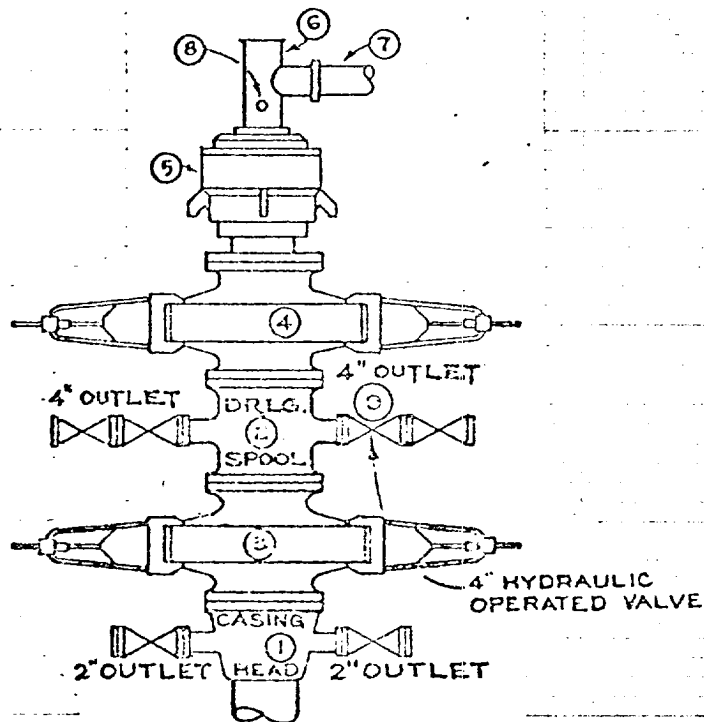
RECEIVED

JUL 1 1977

OIL CONSERVATION COMM.  
HOBBS, N. M.

# BIOWOUT PREVENTL. REQUIRMENTS FOR 3000 LB SERVICE

## MINIMUM BOP FOR 3M



3M OR 5M-RSRA

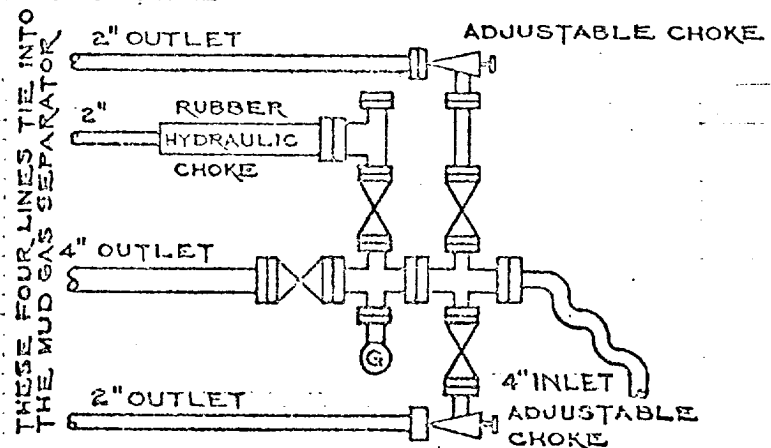
## TEST:

AFTER NIPPLING UP ON  
SURFACE PIPE BUT BEFORE  
DRILLING OUT THE CEMENT  
PLUG THE B.O.P.'S SHAL  
BE TESTED TO THE RATED  
WORKING PRESSURE

## FREQUENCY:

THE BOP'S SHAL BE CYCLED  
CLOSED AND OPEN EVERY  
TIME A TRIP IS MADE.

## MINIMUM CHOKE MANIFOLD FOR 3M



## LEGEND

- (G) PRESSURE GAUGE
- (1) CASING HEAD W/2-2" OUTLETS
- (2) DRILLING SPOOL W/2 FLGD. OUTLETS
- (3) RAM TYPE BOP W/PIPE RAMS
- (4) RAM TYPE BOP W/BLIND RAMS
- (5) HYDRIL BOP (ANNULAR TYPE)
- (6) BELL NIPPLE
- (7) FLOWLINE MINIMUM SIZE 8" L.P.
- (8) 2" FILL UP LINE AT RIGHT ANGLE TO FLOW LINE (7)
- (9) HYDRAULICALLY OPERATED VALVE

RECEIVED

JUL 14 1977

OIL CONSERVATION COMM.  
HOBBS, N. M.

RECEIVED

JUL 14 1977

O. C. C.  
ARTESIA, OFFICE

NEW MEXICO OIL CONSERVATION COMMISSION  
WELL LOCATION AND ACREAGE DEDICATION PLAT

Form C-101  
Supersedes C-128  
Effective 1-1-65

All distances must be from the outer boundaries of the Section

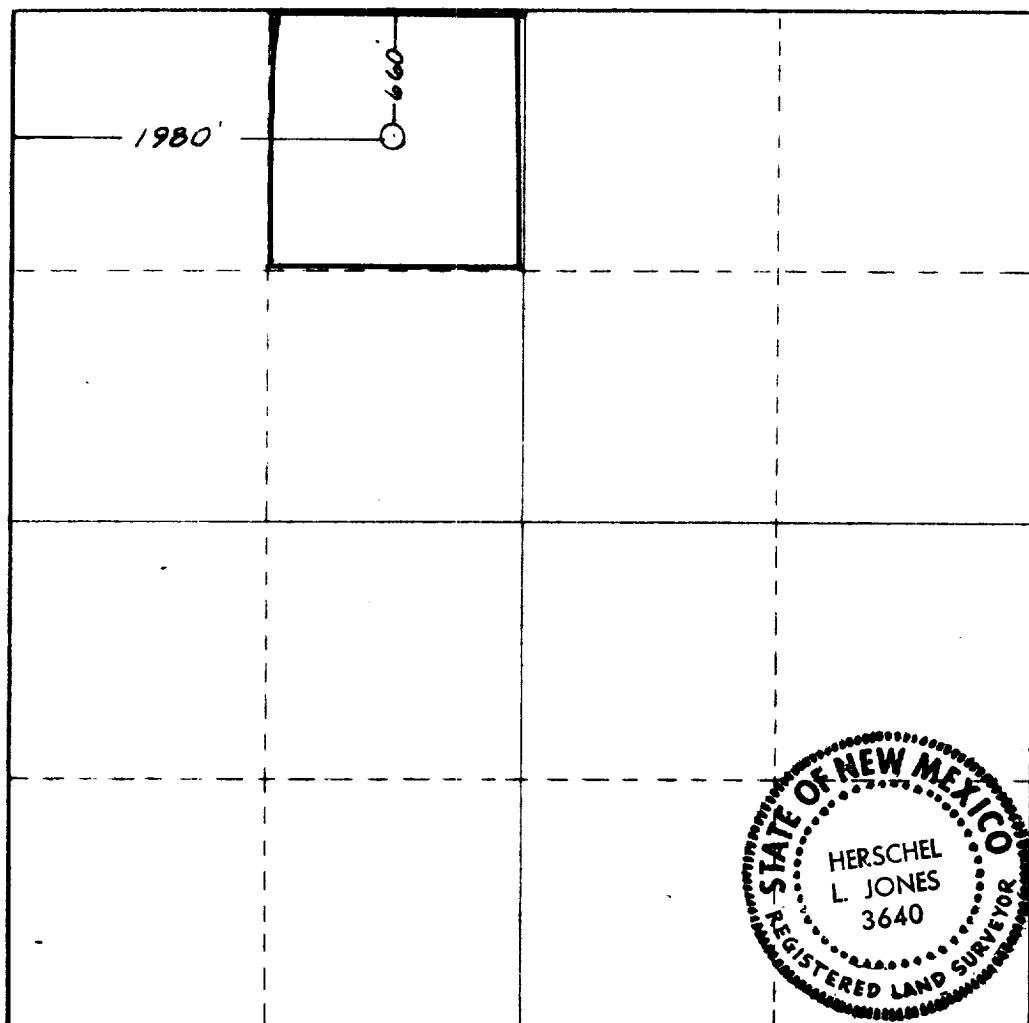
Operator <b>HUSKY OIL COMPANY</b>		of <b>Delaware</b>		Lease <b>North Shore-Woolworth</b>		Well No. <b>1</b> <del>3-33</del>
Section <b>C</b>	Section <b>33</b>	Township <b>24 S</b>	Range <b>37 E.</b>	County <b>Lea</b>		
Actual Well Location of Well: <b>660</b> feet from the <b>North</b> line and <b>1980</b> feet from the <b>West</b> line						
Ground Level Elev. <b>3257</b>	Producing Formation <b>Yates</b>		Pool <b>Wildcat</b>	Dedicated Acreage: <b>40</b> Acres		

1. Outline the acreage dedicated to the subject well by colored pencil or hachure marks on the plat below.
2. If more than one lease is dedicated to the well, outline each and identify the ownership thereof (both as to working interest and royalty).
3. If more than one lease of different ownership is dedicated to the well, have the interests of all owners been consolidated by communitization, unitization, force-pooling, etc?

☐ Yes ☐ No If answer is "yes," type of consolidation All the same lease

If answer is "no," list the owners and tract descriptions which have actually been consolidated. (Use reverse side of this form if necessary.)

No allowable will be assigned to the well until all interests have been consolidated (by communitization, unitization, forced-pooling, or otherwise) or until a non-standard unit, eliminating such interests, has been approved by the Commission.



CERTIFICATION

I hereby certify that the information contained herein is true and complete to the best of my knowledge and belief.

*H. L. Walter*

Name

**Drilling Engineer**

Position

**Husky Oil Company**

Company

**June 28, 1977**

Date

I hereby certify that the well location shown on this plat was plotted from field notes of actual surveys made by me or under my supervision, and that the same is true and correct to the best of my knowledge and belief.

Date Surveyed

**May 17, 1977**

Registered Professional Engineer and/or Land Surveyor

*Herschel L. Jones*

Certificate No.

**3640**



RECEIVED

JUL 14 1977

O. C. C.  
ARTERIA, OFFICE

RECEIVED  
JUL 1 1977  
OIL CONSERVATION COMM.  
HOBBS, N. M.