

NEW MEXICO OIL CONSERVATION COMMISSION
WELL LOCATION AND ACREAGE DEDICATION PLAT

Form O-11
Supersedes O-10
Effective 1-1-76

All distances must be from the outer boundaries of the Section

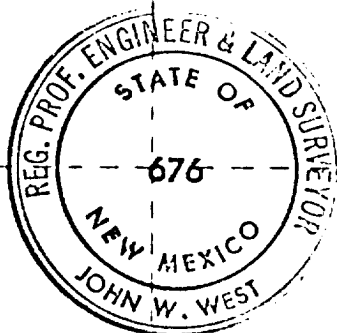
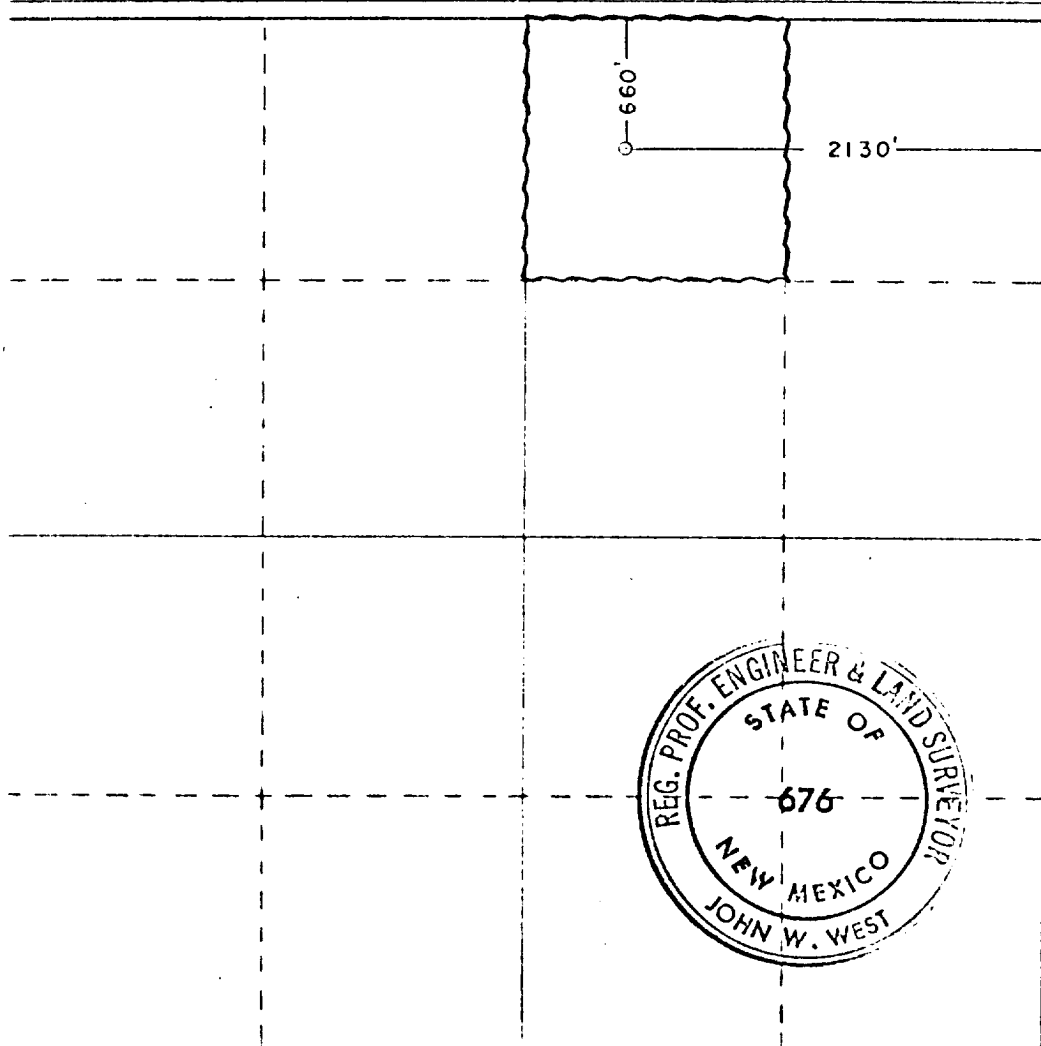
Lessee AMOCO PRODUCTION COMPANY		Lease MYERS "B"		Acreage 2 3	
Section B	Section 26	Township 24 South	Range 36 East	County Lea	
Locality and Location of Well:					
660 feet from the north line and		2130 feet from the east line			
Producing Formation 3316.2	Producing Formation SEVEN RIVERS		Producing Formation JALMAT SEVEN RIVERS	Producing Formation 40	

1. Outline the acreage dedicated to the subject well by colored pencil or hachure marks on the plat below.
2. If more than one lease is dedicated to the well, outline each and identify the ownership thereof (both as to working interest and royalty).
3. If more than one lease of different ownership is dedicated to the well, have the interests of all owners been consolidated by communitization, unitization, force-pooling, etc?

☐ Yes ☐ No If answer is "yes," type of consolidation _____

If answer is "no," list the owners and tract descriptions which have actually been consolidated. (Use reverse side of this form if necessary.) _____

No allowable will be assigned to the well until all interests have been consolidated (by communitization, unitization, forced-pooling, or otherwise) or until a non-standard unit, eliminating such interests, has been approved by the Commission.



CERTIFICATION

I hereby certify that the information contained herein is true and complete to the best of my knowledge and belief.

Name Ray W. Cox
Position Administrative Assistant

Company AMOCO PRODUCTION COMPANY

Date 9-1-77

I hereby certify that the well location shown on this plat was plotted from field notes of actual surveys made by me or under my supervision, and that the same is true and correct to the best of my knowledge and belief.

Date Surveyed August 22, 1977

Registered Professional Engineer and/or Land Surveyor

John W. West
Certificate No. 676

330 660 990 1320 1650 1980 2310 2640 2970 3300 3630 3960 4290 4620 4950 5280 5610 5940 6270 6600

RECEIVED
OCT 11 1977
CIVIL RIGHTS DIVISION
U.S. DEPT. OF JUSTICE