

UNITED STATES
DEPARTMENT OF THE INTERIOR
GEOLOGICAL SURVEY

APPLICATION FOR PERMIT TO DRILL, DEEPEN, OR PLUG BACK

1a. TYPE OF WORK

DRILL ☒DEEPEN ☐PLUG BACK ☐

b. TYPE OF WELL

OIL
WELL ☐GAS
WELL ☐

OTHER

SINGLE
ZONE ☐MULTIPLE
ZONE ☐

2. NAME OF OPERATOR

3. ADDRESS OF OPERATOR

4. LOCATION OF WELL (Report location clearly and in accordance with any State requirements.)
At surface

At proposed prod. zone

14. DISTANCE IN MILES AND DIRECTION FROM NEAREST TOWN OR POST OFFICE*

By access road 21 miles N. of Jal, New Mexico

15. DISTANCE FROM PROPOSED*

LOCATION TO NEAREST

PROPERTY OR LEASE LINE, FT.

(Also to nearest drlg. unit line, if any)

18. DISTANCE FROM PROPOSED LOCATION*
TO NEAREST WELL, DRILLING, COMPLETED,
OR APPLIED FOR, ON THIS LEASE, FT.

21. ELEVATIONS (Show whether DF, RT, GE, etc.)

23.

PROPOSED CASING AND CEMENTING PROGRAM

SIZE OF HOLE	SIZE OF CASING	WEIGHT PER FOOT	SETTING DEPTH	QUANTITY OF CEMENT
20	1 1/2" new	54#	400'	400 lb
14 3/4	1 1/2" new	50.5 1-1/2" 51	100'	1700 lb
14 1/2	1 1/2" new	50.7 1-1/2" 51	1000'	500 lb
14 1/2	1 1/2" new	50.7 1-1/2" 51	1000'	500 lb

W.P. 100' - 1000'

W.P. 100' - 1000'

W.P. 100' - 1000'

W.P. 100' - 1000'

W.P. 100' - 1000'

W.P. 100' - 1000'

W.P. 100' - 1000'

Pipe rams & blinds will be
pressure-checked when BOP
installed. BOP will be
pressure-checked when casing
strings are set & operated
daily for checks.

GAS IS DEDICATED TO EL PASO

3-7-78

IN ABOVE SPACE DESCRIBE PROPOSED PROGRAM: If proposal is to deepen or plug back, give data on present productive zone and proposed new productive zone. If proposal is to drill or deepen directionally, give pertinent data on subsurface locations and measured and true vertical depths. Give blowout preventer program, if any.

24.

SIGNED

TITLE

DATE

(This space for Federal or State office use)

PERMIT NO.

APPROVAL DATE

APPROVED BY

TITLE

CONDITIONS OF APPROVAL, IF ANY:

*See Instructions On Reverse Side

APPROVED
AS AMENDED
DEC 7 1977
ARTHUR R. BROWN
DISTRICT ENGINEER

Instructions

General: This form is designed for submitting proposals to perform certain well operations, as indicated, on all types of lands and leases for appropriate action by either a Federal or a State agency, or both, pursuant to applicable Federal and/or State laws and regulations. Any necessary special instructions concerning the use of this form and the number of copies to be submitted, particularly with regard to local, area, or regional procedures and practices, either are shown below or will be issued by, or may be obtained from, the local Federal and/or State office.

Item 1: If the proposal is to redrill to the same reservoir at a different subsurface location or to a new reservoir, use this form with appropriate notations. Consult applicable State or Federal regulations concerning subsequent work proposals or reports on the well.

Item 4: If there are no applicable State requirements, locations on Federal or Indian land should be described in accordance with Federal requirements. Consult local State or Federal office for specific instructions.

Item 14: Needed only when location of well cannot readily be found by road from the land or lease description. A plat, or plats, separate or on this reverse side, showing the roads to, and the surveyed location of, the well, and any other required information, should be furnished when required by Federal or State agency offices.

Items 15 and 18: If well is to be, or has been directionally drilled, give distances for subsurface location of hole in any present or objective production zone.

Item 22: Consult applicable Federal or State regulations, or appropriate officials, concerning approval of the proposal before operations are started.

★ U.S. GOVERNMENT PRINTING OFFICE: 1974 - 781 - 025 / VIII-239

RECEIVED

18 1977

OIL CONSERVATION COMM.
HOBBS, N. M.

NEW MEXICO OIL CONSERVATION COMMISSION
WELL LOCATION AND ACREAGE DEDICATION PLAT

Form C-105
Superseded C-128
Effective 1-1-65

All distances must be from the outer boundaries of the Section

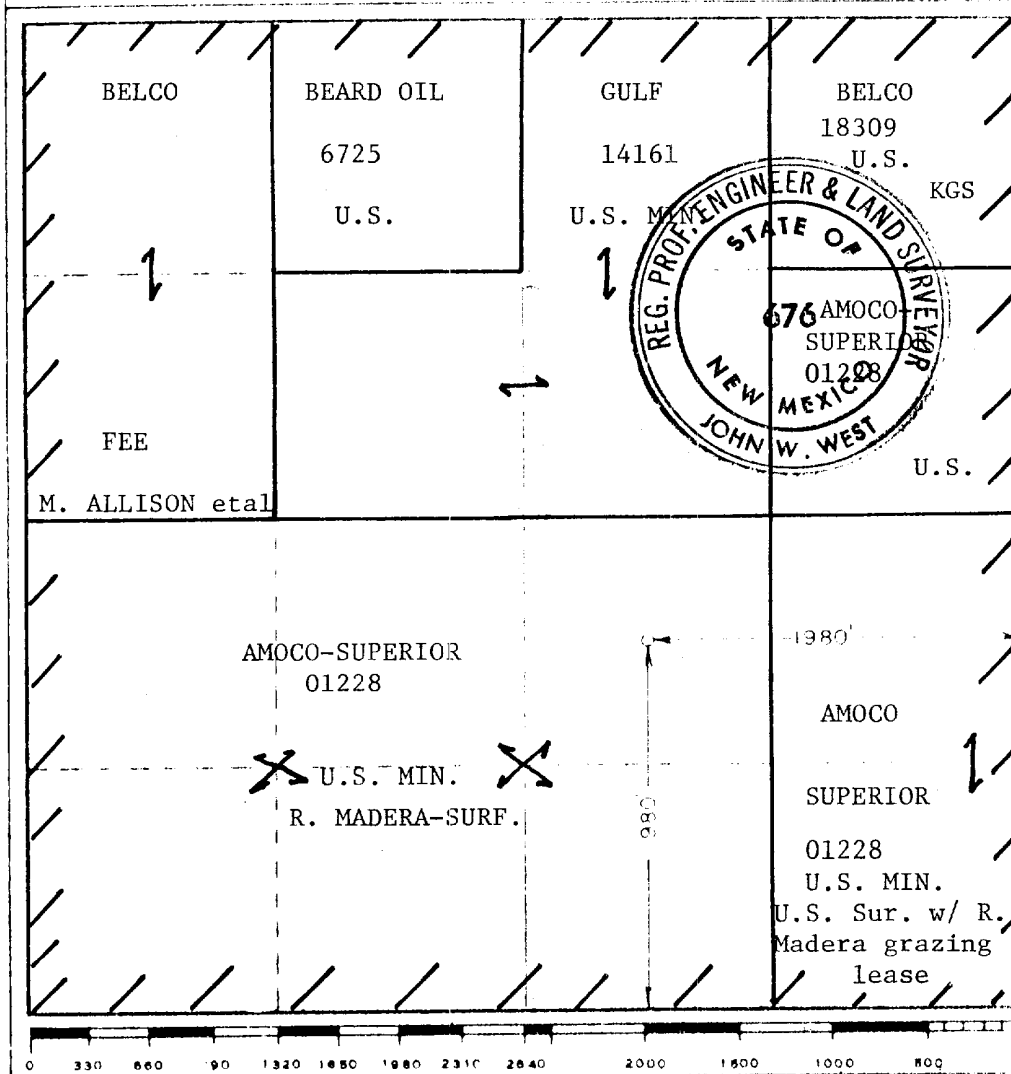
Operator BELCO PETROLEUM CORP.		Lease FEDERAL C.R. 8		Well No. 1
Unit Letter J	Section 8	Township 24 South	Range 35 East	County Lea
Actual Surface Location of Well:				
1980	feet from the	South	1980	feet from the
				East
Ground Level Elev. 3400.0	Producing Interval MORROW	Undesignated Cinta Roja Morrow		Productive Acreage 640

1. Outline the acreage dedicated to the subject well by colored pencil or hatchure marks on the plat below.
2. If more than one lease is dedicated to the well, outline each and identify the ownership thereof (both as to working interest and royalty).
3. If more than one lease of different ownership is dedicated to the well, have the interests of all owners been consolidated by communitization, unitization, force-pooling, etc?

☒ Yes ☐ No If answer is "yes," type of consolidation communitization

If answer is "no," list the owners and tract descriptions which have actually been consolidated (Use reverse side of this form if necessary.)

No allowable will be assigned to the well until all interests have been consolidated (by communitization, unitization, forced-pooling, or otherwise) or until a non-standard unit, eliminating such interests, has been approved by the Commission.



CERTIFICATION

I hereby certify that the information contained herein is true and complete to the best of my knowledge and belief.

Lee G. Nering
Lee G. Nering

Administrative Geologist

BELCO PETROLEUM CORPORATION

November 8, 1977

I hereby certify that the well location shown on this plat was plotted from field notes of actual surveys made by me or under my supervision and that the same is true and correct to the best of my knowledge and belief.

Re-Surveyed Nov. 4, 1977

April 28, 1977

Registered Professional Engineer
and Land Surveyor

John W. West
John W. West

676

RECEIVED

18 1977

OIL CONSERVATION COMM.
HOBBS, N. M.

GEOLOGICAL INFORMATION

BELCO CR 8-1

1980' FSL, 1980' FEL

Sec. 8, T24S-R35E

Lea Co., New Mexico

- ① The surface at the location is covered by Quaternary Alluvium.

The following formation depths are anticipated:

②	Alluvium-Ogallala	0 - 400'	③ Fresh water
	Dewey Lake	400'	
	Rustler	800'	
	Delaware Mtn. Group	5,200'	Possible oil
	Bone Springs	8,700'	Possible oil
	Wolfcamp	10,450'	Possible gas
	Penn Strawn-Atoka	11,900'	Possible gas
	Morrow	13,700'	Objective gas

- ⑧ It is anticipated that logging will consist of Dual Laterolog or Forxo-Guard and Densilog-Neutron.

" Open-hole drillstem testing will be considered during the drilling of the formations considered to have possible oil or gas potential, but only at the discretion of the wellsite geologist.

" No coring is anticipated.

- ⑨ It is anticipated that high pressure may be encountered in the Wolfcamp and the Penn Strawn-Atoka.

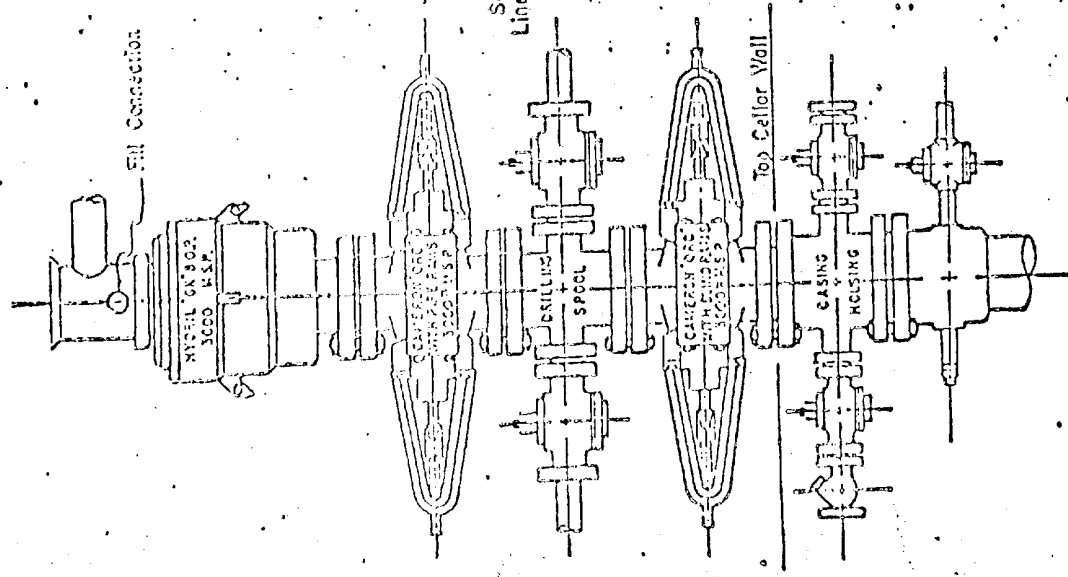
RECEIVED

10 1977

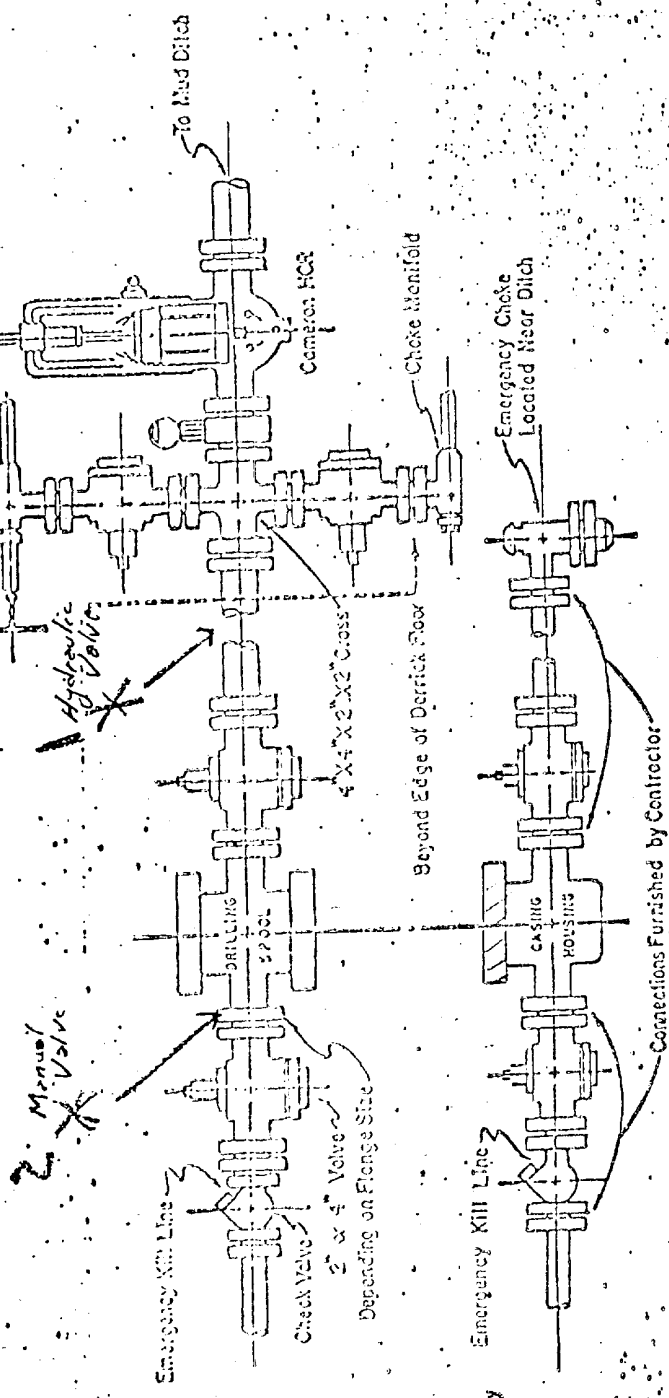
CL CONSTITUTION COMM.
ROBBS, N. M.

Blow-out-preventers hydril and choke manifold all 1500 Series.

5



5,000 ~~XXXX~~ PSI WORKING PRESSURE
BLOWOUT PREVENTER HOOK-UP
1500
Series 900 Flanges, or Better



5,000 ~~XXXX~~ PSI WORKING PRESSURE
KILL, CHOKES, AND FILL CONNECTIONS
1500
API Series 900 Flanges or Better

DETAIL OF 4" FLOW LINE CHOKES ASSEMBLY
Minimum assembly for 5000 PSI working pressure will consist of three preventers. The bottom and middle preventers may be Cameron

- 1. Rotating Stripper Head below intermediate csg.
- 2. Lower Kelly-cock valve

7

See Detail of 4" Flow Line and Choke Assembly

RECEIVED

15 1977

OIL CONSERVATION COMM.
HOBBS, N. M.

SURFACE USE PLAN
BELCO PETROLEUM CORPORATION
FEDERAL CR 8-1
1980' FEL, 1980' FSL, Sec. 8, T-24-S, R-35-E
Lea County, New Mexico
Lease: New Mexico 01228

The proposed wellsite is approximately 21 miles by access road, northwest of Jal, New Mexico, and can be reached by exiting from State Highway 18 approximately 6.8 miles north of Jal, and traveling 13 - 14 miles west to the location, as shown on Exhibit "A".

1. EXISTING ROADS: Access and existing roads are shown on Exhibit "A". In addition, Exhibit "B" also illustrates proximity access. Exhibit "B" is a composite of USGS topographic quadrangles, at a scale of 1: 24,000.

2. PROPOSED ROAD: Belco plans to construct a caliche entry road approximately 4000' long, 12' wide connecting to existing roads to the Amoco Custer Mountain #1 well, 1980' FSL, 1980' FWL, Section 9, T-24-S, R-35-E, as shown on Exhibits "A" and "B".

Cut and Fill: None anticipated excepting some compacted caliche to level the pad.

Culverts: None required.

Cattleguards, Gates, etc.: Belco plans to install a cattle guard on the fenceline at the section line between Sections 8 and 9, as shown on Exhibit "B".

3. EXISTING WELLS: This proposed gas well is located 4000' west of the existing one well, Cinta Roja Morrow gas pool, as shown on Exhibits "A" and "B".

4. PRODUCTION, GATHERING, TREATING AND STORAGE FACILITIES:

Tank Battery: Tank battery site, as shown on Exhibit "D", in the event of a successful well.

Flow Lines: Proposed flow lines are shown on Exhibit "D".

5. WATER SUPPLY: Belco plans to acquire water from commercial services available in the area.

6. SOURCE OF CONSTRUCTION MATERIALS: Caliche for construction of the new entry road and for surfacing the proposed wellsite pad will be obtained from commercial services who will utilize existing open supplies in the area.

7. METHODS OF HANDLING WASTE DISPOSAL:

Drill cuttings will be disposed of in the drilling pits.

Drilling fluids will be allowed to evaporate in the drilling pits until pits are dry.

Any produced water will be collected in tanks until hauled away. Any oil produced during tests will be stored in test tanks until sold.

Trash containers will be provided around the drilling rig during drilling and completion procedures. Trash, waste paper, garbage, and junk will be buried in a separate trash pit, as shown on Exhibit "D", and covered with a minimum of 24 inches of dirt.

8. ANCILLARY FACILITIES: No camps, airstrips, etc. will be constructed.

9. WELLSITE LAYOUT: Exhibit "D" shows the dimensions and the relative locations of the well pad, mud pits, reserve pit, and trash pit with respect to the well.

Mat Size: 350' x 230'

Cut and Fill: The proposed drillsite pad will be leveled.

Surfaced: The base will be surfaced by six inches of compact caliche.

RECEIVED

1977

OIL CO. REGISTRATION COMM.
HOBBS, N. M.

SURFACE USE PLAN

WELLSITE LAYOUT continued

Reserve Pit: 155' x 125' pit lined with plastic

Cleared Buffer Area: No buffer area is to be cleared; however, area around well mat may be used for turn-around and/or storage.

10. PLANS FOR RESTORATION OF THE SURFACE: After completion of drilling and/or completion operations, all equipment and other material not needed for operations will be removed. Pits will be filled and location cleaned of all trash and junk as soon as practical or buried with at least 24' of cover. Any unguarded pits containing fluids will be fenced until they are filled. After abandonment of the well, the well pad and all un-needed access roads will be ripped to promote revegetation.

11. OTHER INFORMATION:

Topography: Land surface consists of low relief, grassy topography.

Soil: Thin, sands, calcerous soil underlain with some caliche.

Vegetation: Native grasses, some sage, and yucca.

Wildlife: None observed.

Ponds and Streams: None in vicinity of the location.

Residences and Other Structures: There are no occupied dwellings within 1/2 mile.

Water Wells: A few water wells are located in the general area.

Land Use: Grazing

Surface Ownership: The drillsite surface, W/2 SE/4 Section 8, is owned by R. Madera, Jal, New Mexico, with whom Belco has completed restoration agreements; the E/2 SE/4 Section 8, is owned by the United States, and has a BLM grazing lease issued to R. Madera; the SW/4 Section 8, across which Belco plans to construct the access road, is owned by the Jal Library Trust, with whom Belco will arrange a restoration agreement.

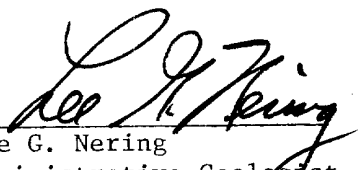
Well Sign: Sign identifying and locating well will be maintained at drillsite commencing with the spudding of the well.

12. OPERATOR'S REPRESENTATIVE: Field personnel who can be contacted concerning compliance of this Surface Use Plan consists of:

Ray Belden, 411 Petroleum Building, Midland, Texas 79701 - Phone (915) 683-6366.

13. CERTIFICATION:

I hereby certify that I, or persons under my direct supervision, have inspected the proposed drillsite and access route; that I am familiar with the conditions which presently exist; that the statements made in this plat are, to the best of my knowledge, true and correct; and that the work associated with the operations proposed herein will be performed by BELCO PETROLEUM CORPORATION and its contractors and sub-contractors in conformity with this Plan and the terms and conditions under which it is approved. A copy of this Plan will be posted at the wellsite during the drilling of the well for reference by all contractors and sub-contractors.


Lee G. Nering
Administrative Geologist
BELCO PETROLEUM CORPORATION
Houston, Texas

RECEIVED

1977

OIL CONSERVATION COMM.
MORRIS M. M.

100-100000-100000

10 1977

OIL CONSERVATION COM.
HOBBS, N. M.

WOODLEY FLAT QUADRANGLE UNITED STATES
NEW MEXICO-LEA CO. DEPARTMENT OF THE INTERIOR
7.5 MINUTE SERIES (TOPOGRAPHIC) GEOLOGICAL SURVEY

651 1790 000 FEET

103°22'30"

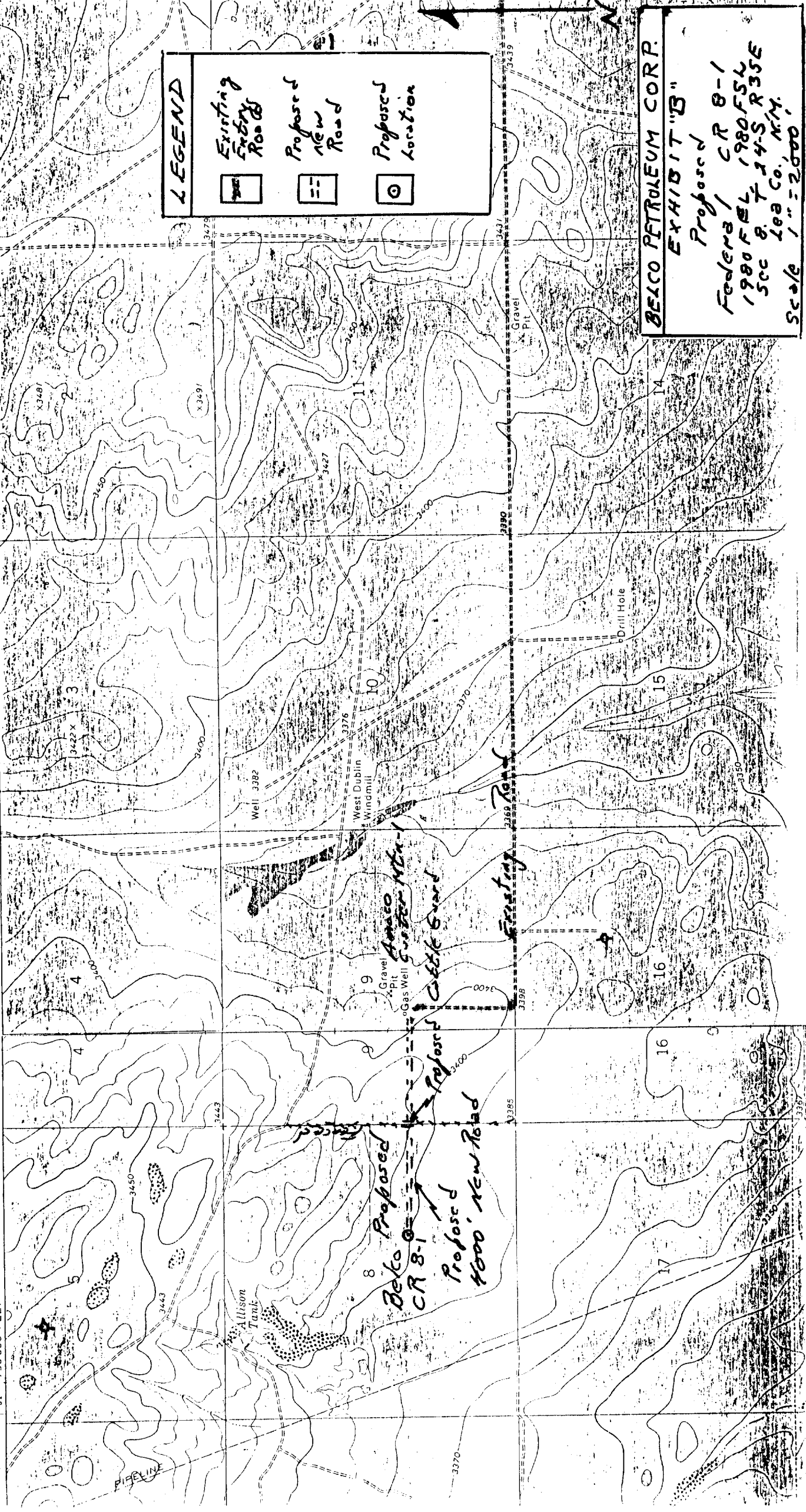
654 000 m.E.

559

20

100


100



LEGEND

Existing
Entry
Road

Proposed
New
Road

Proposed location	Proposed location
	

BEICO PETROLEUM CORP.

EXHIBIT "B"

Proposed
Feeders / CR 8-1
1980 FSL 1980 FSL
Sec 8. T 24-S R35E
Lea Co., N.Y.
Sec 8 1" = 2000'

RECEIVED

12/15/77

OIL CONSERVATION COMM.
HOBBS, N. M.

R.35E.

8

T.
24
S.

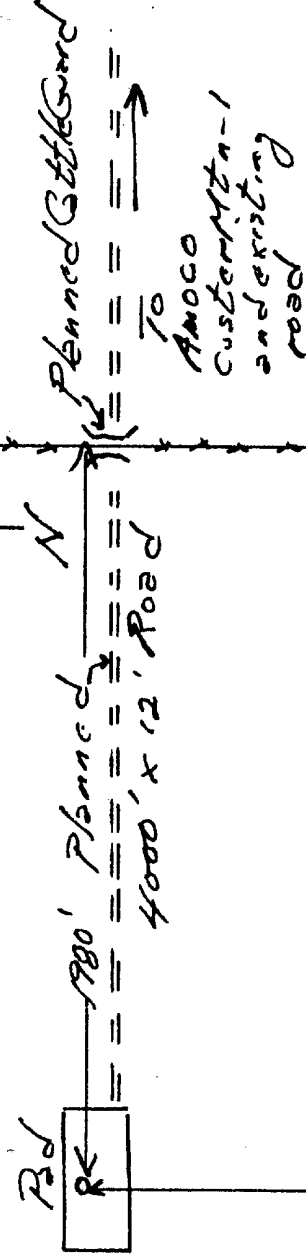


EXHIBIT "C"
Beiko Petroleum Corp.
Federal CR 8-1
1980' FSL 1980' FEL
SEC 8, T24S R35E
Lee Co. N.M.
Scale 1" = 500'

8 9
17 16

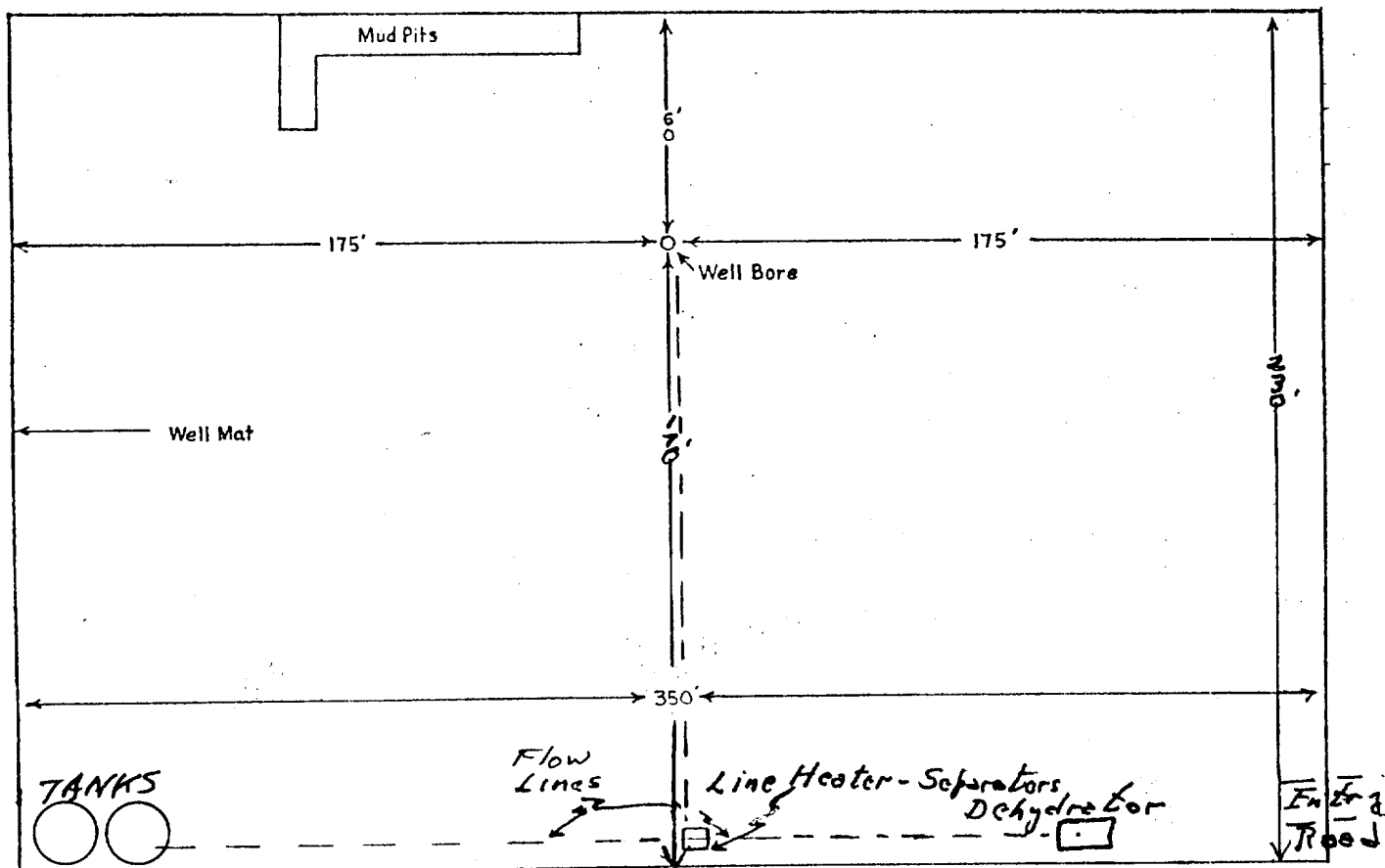
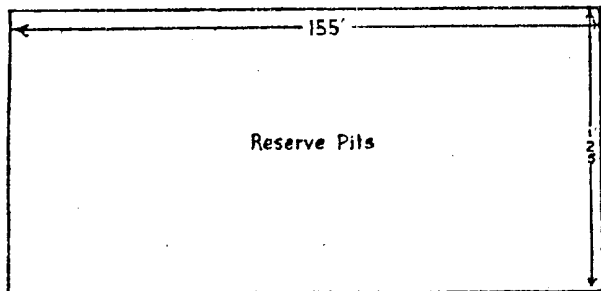
7 8
18 17

RECEIVED

1977

OIL CONSERVATION COMM.
HOBBS, N. M.

Trash
Pits



Scale: 1" = 50'

EXHIBIT "D"
Proposed
Beko Petrochem Corp.
Federal CR 8-1
1980' FSL, 1980' FEL
Sec 8, T. 24S, R35E
Lee Co., N.M.

RECEIVED

10 1977

OIL CONSERVATION COMM.
HOBBS, N. M.

HOBBS DISTRICT

Belco Petroleum Corp.

No. 1 Federal CR-8

NW $\frac{1}{4}$ SE $\frac{1}{4}$ sec. 8-24S-35E

Lea County, N. M.

Above Data Required on Well Sign

CONDITIONS OF APPROVAL

1. Drilling operations authorized are subject to compliance with the attached General Requirements for Drilling Operations on Federal Oil and Gas Leases, dated January 1, 1977.
2. Notify this office (telephone (505) 393-3612) when the well is to be spudded and in sufficient time for a representative to witness all cementing operations. Attached are names and telephone numbers of Geological Survey and Bureau of Land Management personnel who are available for consultation during construction, drilling, completion, and rehabilitation activities.
3. Immediate notice is required of all blowouts, fires, spills, and accidents involving life-threatening injuries or loss of life.
4. Secure prior approval of the District Engineer for variance from the approved drilling program and before commencing plugging operations, plug-back work, casing repair work, corrective cementing operations, or suspending drilling operations indefinitely.
5. Blowout prevention equipment is to be installed, tested, and in working order before drilling below the surface casing and shall be maintained ready for use until drilling operations are completed.
6. Operations must be in compliance with the provisions of the landowner agreement concerning surface disturbance and surface restoration.
7. 16" surface casing should be set in the Rustler Anhydrite formation and cement circulated to the surface. If surface casing is set at a lesser depth, the 10-3/4" casing must be cemented from the casing shoe to the surface or cemented to the surface through a stage tool set at least 50 feet below the top of the Rustler, after cementing around the shoe with sufficient cement to fill to the base of the salt section.
8. After setting the 7-5/8" casing string and before drilling into the Pennsylvanian formation, the blowout preventers and related control equipment shall be pressure tested to rated working pressures by an independent service company. Any equipment failing to test satisfactorily shall be repaired or replaced. This office should be notified in sufficient time for a representative to witness the tests and shall be furnished a copy of the pressure test report.
9. Mud system monitoring equipment, with derrick flow indicators and visual and audio alarms, shall be installed and operating before drilling into the Pennsylvanian formation and used until production casing is run and cemented. Monitoring equipment shall consist of the following:
 - (1) A recording pit level indicator to determine pit volume gains and losses.
 - (2) A mud volume measuring device for accurately determining mud volume necessary to fill the hole on trips.
 - (3) A flow sensor on the flow-line to warn of any abnormal mud returns from the well.

RECEIVED

10 10 1977

OIL CONSERVATION COMM.
HOBBS, N. M.