

NO. OF COPIES RECEIVED	
DISTRIBUTION	
SANTA FE	
FILE	
U.S.G.S.	
LAND OFFICE	
OPERATOR	

NEW MEXICO OIL CONSERVATION COMMISSION

Form C-101
Revised 1-1-65

5A. Indicate Type of Lease	
STATE <input checked="" type="checkbox"/>	FEE <input type="checkbox"/>
5. State Oil & Gas Lease No.	
NA	

APPLICATION FOR PERMIT TO DRILL, DEEPEN, OR PLUG BACK

1a. Type of Work		7. Unit Agreement Name	
b. Type of Well OIL WELL <input checked="" type="checkbox"/> GAS WELL <input type="checkbox"/> OTHER <input type="checkbox"/>		8. Farm or Lease Name	
DEEPEN <input type="checkbox"/> PLUG BACK <input type="checkbox"/>		Clayton State 22	
2. Name of Operator		9. Well No.	
Gas Producing Enterprises, Inc.		1	
3. Address of Operator		10. Field and Pool, or Wildcat	
P.O. Box 235, Midland, Texas 79702		Townsend Wolfcamp	
4. Location of Well		12. County	
UNIT LETTER 0 LOCATED 660 FEET FROM THE South LINE		Lea	
AND 1980 FEET FROM THE East LINE OF SEC. 22 TWP. 15-S RGE. 35-E NMPM			
19. Proposed Depth		19A. Formation	
10,700		Lower Wolfcamp	
20. Rotary or C.T.		Rotary	
21. Elevations (Show whether DF, RT, etc.)		22. Approx. Date Work will start	
3978.4' GR		5-15-78	
21A. Kind & Status Plug. Bond		21B. Drilling Contractor	
Blanket on File		Unknown (Will advise)	

23. PROPOSED CASING AND CEMENT PROGRAM

SIZE OF HOLE	SIZE OF CASING	WEIGHT PER FOOT	SETTING DEPTH	SACKS OF CEMENT	EST. TOP
17-1/2"	13-3/8"	48#	400	450 sx	Surface
11"	8-5/8"	24# & 32#	4700	1100 sx	1800'
7-7/8"	5-1/2"	15.5# & 17#	10,700	450 sx	7500'

1. Mud Weight will be 8.4 to 10.2# per gallon.

2. Blowout preventers: 10" 1500 series Shaffer Double Hydraulic Hydril G.K. w/80 gal. Hydril Closing Unit

APPROVAL VALID
FOR 90 DAYS UNLESS
DRILLING COMMENCED,

EXPIRES 7-17-78

***Cement on the intermediate casing must be brought from the top of the salt or anhydrite to the surface casing. You can do this by either circulating the intermediate casing with cement, or a DV tool at the top of the salt.

IN ABOVE SPACE DESCRIBE PROPOSED PROGRAM: IF PROPOSAL IS TO DEEPEN OR PLUG BACK, GIVE DATA ON PRESENT PRODUCTIVE ZONE AND PROPOSED NEW PRODUCTIVE ZONE. GIVE BLOWOUT PREVENTER PROGRAM, IF ANY.

I hereby certify that the information above is true and complete to the best of my knowledge and belief.

Signed Gregory A. Davis Title Production Analyst Date April 14, 1978

(This space for State Use)

APPROVED BY [Signature] TITLE SUPERVISOR DISTRICT I DATE APR 17 1978

CONDITIONS OF APPROVAL, IF ANY:

***SEE ABOVE

**NEW MEXICO OIL CONSERVATION COMMISSION
WELL LOCATION AND ACREAGE DEDICATION PLAT**

Form C-102
Supersedes C-128
Effective 1-1-65

All distances must be from the outer boundaries of the Section

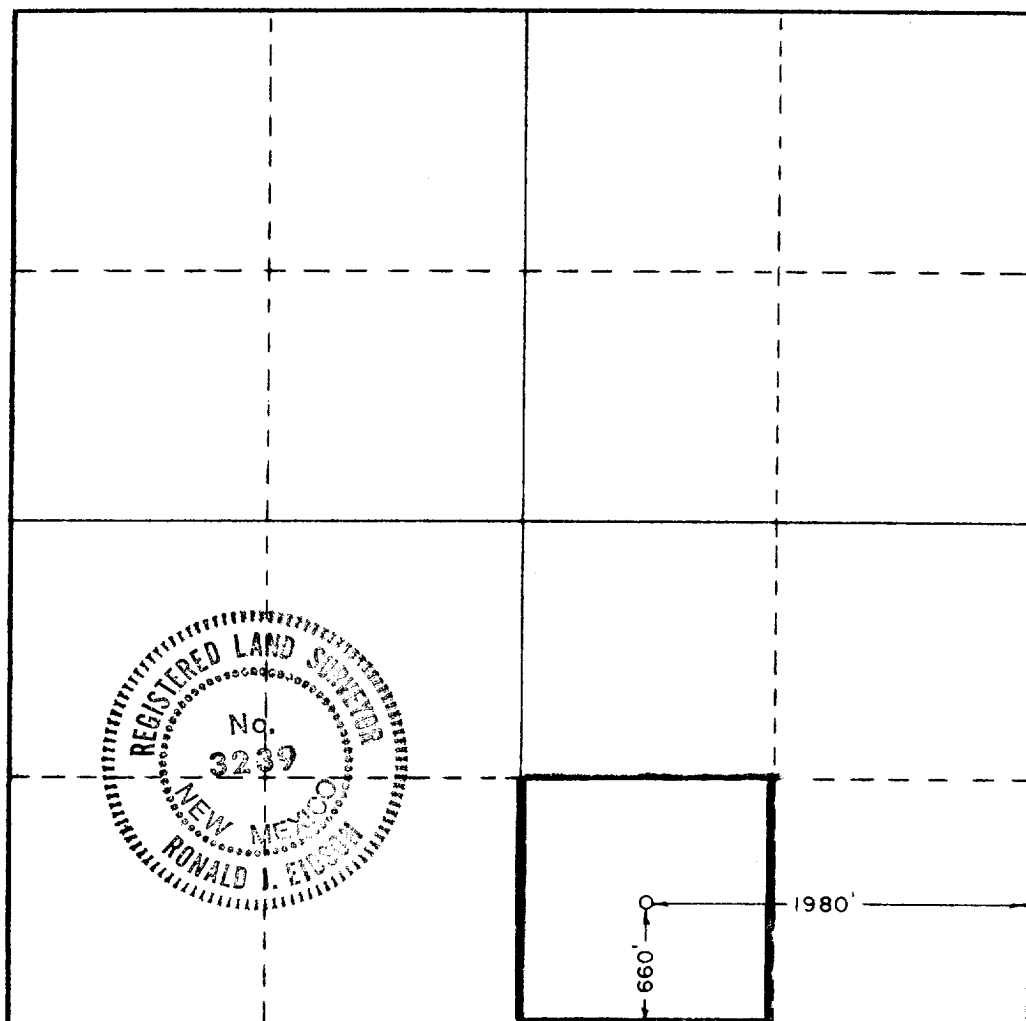
Operator Gas Producing Enterprises, Inc.			Lease Clayton State 22 State 1		Well No. 1
Unit Letter O	Section 22	Township 15 South	Range 35 East	County Lea	
Actual Footage Location of Well: 660 feet from the South line and 1980 feet from the East line					
Ground Level Elev. 3978.4	Producing Formation Lower Wolfcamp		Pool Townsend Wolfcamp		Dedicated Acreage: 40 Acres

1. Outline the acreage dedicated to the subject well by colored pencil or hachure marks on the plat below.
2. If more than one lease is dedicated to the well, outline each and identify the ownership thereof (both as to working interest and royalty).
3. If more than one lease of different ownership is dedicated to the well, have the interests of all owners been consolidated by communitization, unitization, force-pooling, etc?

☐ Yes ☐ No If answer is "yes," type of consolidation _____

If answer is "no," list the owners and tract descriptions which have actually been consolidated. (Use reverse side of this form if necessary.) _____

No allowable will be assigned to the well until all interests have been consolidated (by communitization, unitization, forced-pooling, or otherwise) or until a non-standard unit, eliminating such interests, has been approved by the Commission.



CERTIFICATION

I hereby certify that the information contained herein is true and complete to the best of my knowledge and belief.

Name
H. E. E. Clarke
Position
Dist. Production Supt.
Company
Gas Producing Ent., Inc.
Date
April 14, 1978

I hereby certify that the well location shown on this plat was plotted from field notes of actual surveys made by me or under my supervision, and that the same is true and correct to the best of my knowledge and belief.

4/12/78

Date Surveyed

Registered Professional Engineer and/or Land Surveyor

Ronald J. Eidson
Certificate No. **John W. West 676**
Ronald J. Eidson 3239

0 330 660 990 1320 1650 1980 2310 2640 2970 3300 3630 3960 4290 4620 4950 5280 5610 5940 6270 6600