

NO. COPIES RECEIVED	
DISTRIBUTION	
SANTA FE	
FILE	
U.S.G.S.	
LAND OFFICE	
OPERATOR	

NEW MEXICO OIL CONSERVATION COMMISSION

Form C-101
Revised 1-1-65

5A. Indicate Type of Lease
STATE <input checked="" type="checkbox"/> FEE <input type="checkbox"/>
5. State Oil & Gas Lease No.
LG 4042

APPLICATION FOR PERMIT TO DRILL, DEEPEN, OR PLUG BACK

1a. Type of Work		7. Unit Agreement Name	
b. Type of Well OIL WELL <input type="checkbox"/> GAS WELL <input checked="" type="checkbox"/> OTHER <input type="checkbox"/>		8. Farm or Lease Name State GE	
2. Name of Operator Amoco Production Company		9. Well No. 1	
3. Address of Operator P.O. Drawer A, Levelland, Tx 79336		10. Field and Pool, or Well tract Bell Lake Morrow	
4. Location of Well UNIT LETTER 0 LOCATED 660 FEET FROM THE south LINE AND 1980 FEET FROM THE east LINE OF SEC. 27 TWP. 23-S RGE. 33-E NMPM		11. County Lea	
18. Proposed Depth 15,000'		19A. Formation Morrow	
21A. Kind & Status Plug. Bond Blanket-On File		20. Rotary or C.T. Rotary	
21. Elevations (show whether DF, RT, etc.) 3668.6 GR		22. Approx. Date Work will start 8-28-78	

PROPOSED CASING AND CEMENT PROGRAM

SIZE OF HOLE	SIZE OF CASING	WEIGHT PER FOOT	SETTING DEPTH	SACKS OF CEMENT	EST. TOP
20"	16"	84#	800'	Circ to surf	Surface
14 3/4"	10 3/4"	45.5#	5200'	Circ to surf	Surface
9 1/2"	7 3/8"	26.4#	12800'	Tie back to 10 3/4" Btm of 10 3/4" csg	
6 1/2"	5"	13#	15000'	Tie back to 7 5/8" Btm of 7 5/8" csg	

After drilling well, logs will be run and evaluation made. Perforating and/or stimulating as necessary in attempting commercial production.

Mud Program: 0 - 800' - Native mud and water.
800' - 5200' - Native mud and brine.
5200' - 15000' - Brine and commercial mud with additives to maintain 36-40 viscosity.

BOP Program attached.
Gas is not dedicated.

IN ABOVE SPACE DESCRIBE PROPOSED PROGRAM: IF PROPOSAL IS TO DEEPEN OR PLUG BACK, GIVE DATA ON PRESENT PRODUCTIVE ZONE AND PROPOSED NEW PRODUCTIVE ZONE. GIVE BLOWOUT PREVENTER PROGRAM, IF ANY.

I hereby certify that the information above is true and complete to the best of my knowledge and belief.

Signed Randy Atkins Title Administrative Analyst Date 8-2-78

(This space for State Use)

APPROVED BY [Signature] TITLE SUPERVISOR DISTRICT 1 DATE AUG 4 1978

CONDITIONS OF APPROVAL, IF ANY:
1-NMOCC, H
1-Div
1-RWA
1-Susp

RECEIVED

AUG 4 1978

U.S. CONSERVATION COMM.
WASH. D. C.

NEW MEXICO OIL CONSERVATION COMMISSION
WELL LOCATION AND ACREAGE DEDICATION PLAT

Form C-102
Supersedes C-128
Effective 1-1-65

All distances must be from the outer boundaries of the Section

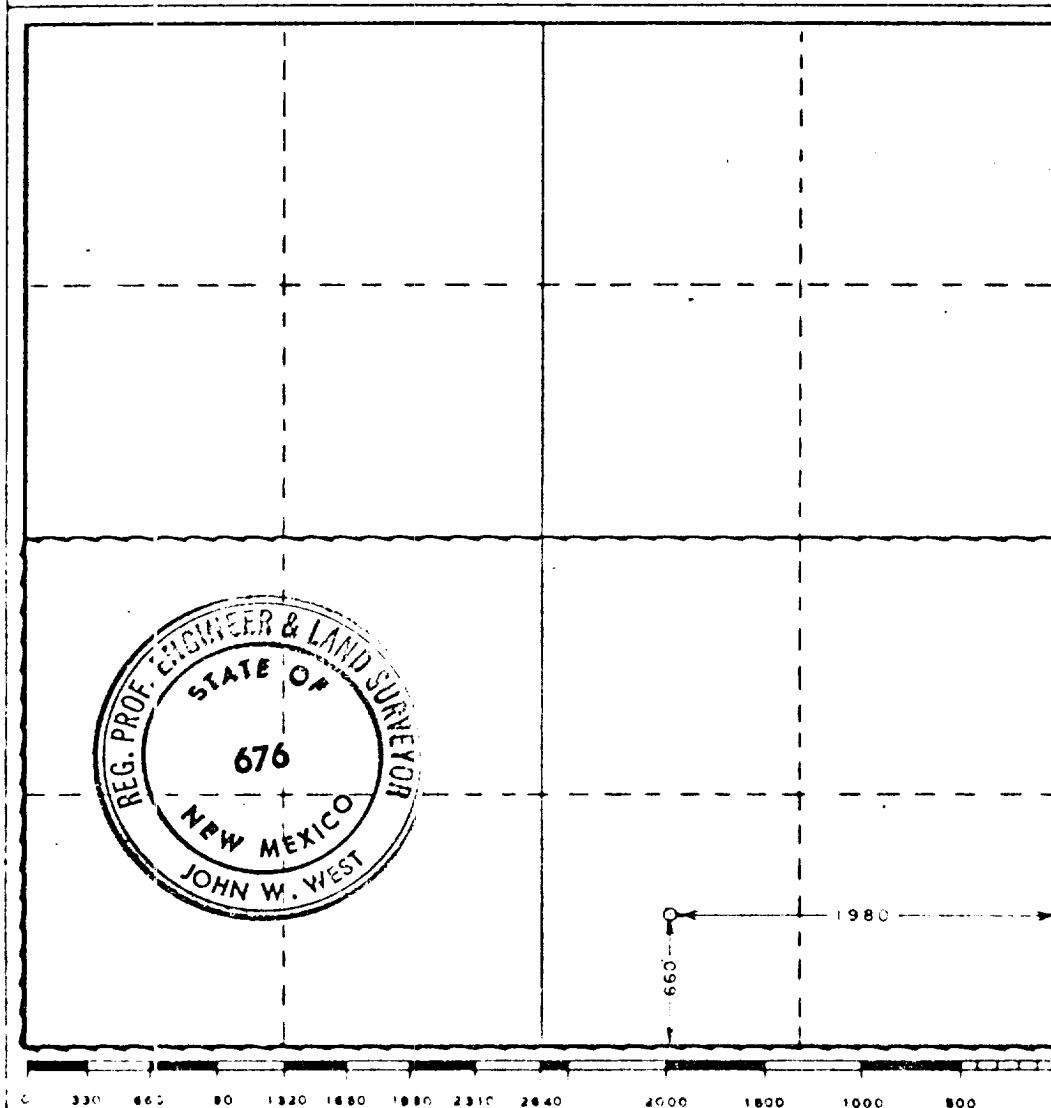
Operator Amoco Production Co.		Lease State G. E.		Well No. 1	
Tract Letter O	Section 27	Township 23 South	Range 33 East	County Lea	
Actual Footnote Location of Well: 660 feet from the South line and 1980 feet from the East line					
Ground Level Elev. 3668.6	Producing Formation MORROW	Pool BELL LAKE MORROW		Dedicated Acreage 320	

1. Outline the acreage dedicated to the subject well by colored pencil or hachure marks on the plat below.
2. If more than one lease is dedicated to the well, outline each and identify the ownership thereof (both as to working interest and royalty).
3. If more than one lease of different ownership is dedicated to the well, have the interests of all owners been consolidated by communitization, unitization, force-pooling, etc?

☐ Yes ☐ No If answer is "yes," type of consolidation _____

If answer is "no," list the owners and tract descriptions which have actually been consolidated. (Use reverse side of this form if necessary.) _____

No allowable will be assigned to the well until all interests have been consolidated (by communitization, unitization, forced-pooling, or otherwise) or until a non-standard unit, eliminating such interests, has been approved by the Commission.



CERTIFICATION

I hereby certify that the information contained herein is true and complete to the best of my knowledge and belief.

Name
Randy Atkins
Position
ADMINISTRATIVE ANALYST
Company
Amoco Production Co.
Date
7-28-78

I hereby certify that the well location shown on this plat was plotted from field notes of actual surveys made by me or under my supervision, and that the same is true and correct to the best of my knowledge and belief.

Date Surveyed
July 17, 1978
Registered Professional Engineer and/or Land Surveyor
John W. West
Certificate No. **John W. West 676**
Ronald J. Eidson 3239

RECEIVED

AUG 4 1978

U.S. CONSERVATION COMMISSION
WASHINGTON, D.C.

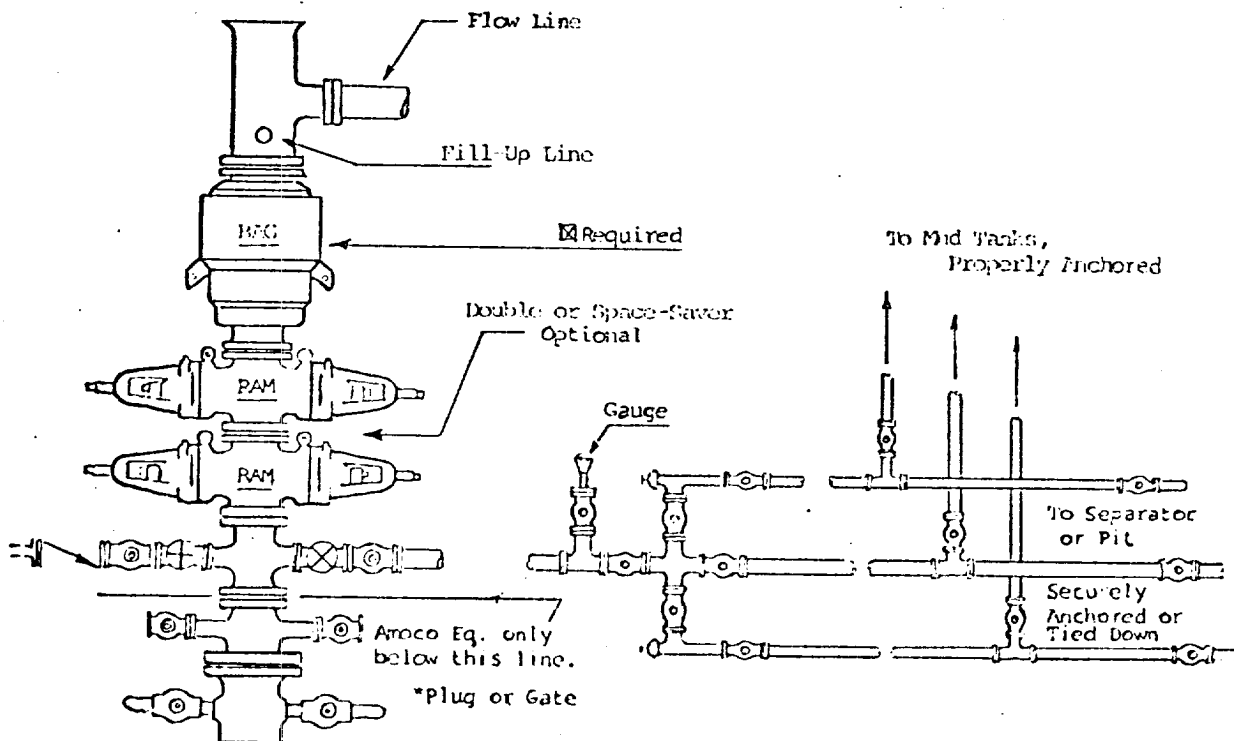
1. BOP'S TO BE FLUID RATED.
2. BOP'S AND ALL FITTINGS MUST BE IN GOOD CONDITION AND RATED AT 3000 PSI W.P. MINIMUM.
3. EQUIPMENT THROUGH WHICH BIT MUST PASS SHALL BE AT LEAST AS LARGE AS CASING SIZE BEING DRILLED THROUGH.
4. NIPPLE ABOVE BOP'S SHALL BE SAME SIZE AS LAST CASING SET.
5. UPPER KELLY COCK IS REQUIRED AND SHALL BE 3000# W.P. MINIMUM.
6. T. I. W. OR COMPARABLE SAFETY VALVE SHALL BE AVAILABLE ON RIG FLOOR WITH CONNECTION OR SUBS TO FIT ANY TOOL JOINT IN THE STRING. VALVE TO BE FULL BORE 5000# MIN.
7. VALVE NEXT TO SPOOL SHALL BE 4". OTHER EQUIPMENT MAY BE 3" OR 4". ALL CHOKE MANIFOLD EQUIPMENT SHALL BE FLANGED. FLOW LINE FROM MANIFOLD TO BE MINIMUM OF 3" AND STRAIGHT AS POSSIBLE WITH MINIMUM BENDS.
8. FLUID LINES FROM ACCUMULATOR TO BOP'S AND ALL REMOTE CONTROL FLUID LINES SHALL BE STEEL, AND RATED AT OR ABOVE MAXIMUM ACCUMULATOR PRESSURE. LINES SHALL BE ROUTED IN BUNDLES AND ADEQUATELY PROTECTED FROM DAMAGE.
9. USE RAMS IN FOLLOWING POSITIONS:*

	<u>DRILLING</u>	<u>RUNNING CASING</u>
UPPER RAM	DRILL PIPE	CASING
LOWER RAM	BLIND	BLIND

*AMOCO AREA SUPT. MAY REVERSE LOCATION OF RAMS.

10. CHOKE MANIFOLD, BEYOND SECOND VALVE FROM CROSS MAY BE OPTIONALLY POSITIONED OUTSIDE OF SUBSTRUCTURE.
11. EXTENSIONS AND HAND WHEELS TO BE INSTALLED AND BRACED AT ALL TIMES.
12. TWO INCH (2") LINES AND VALVES ARE PERMITTED ON THE KILL LINE.

NOTE: ALL UNMARKED VALVES MAY BE PLUG OR GATE VALVE, METAL TO METAL SEAL.



3000# W.P.

RECEIVED

AUG 4 1978

CU CONSERVATION COMM.
DURHAM, N. C.