

NEW MEXICO OIL CONSERVATION COMMISSION
WELL LOCATION AND ACREAGE DEDICATION PLAT

Form C-102
Supersedes C-128
Effective 1-1-65

All distances must be from the outer boundaries of the Section

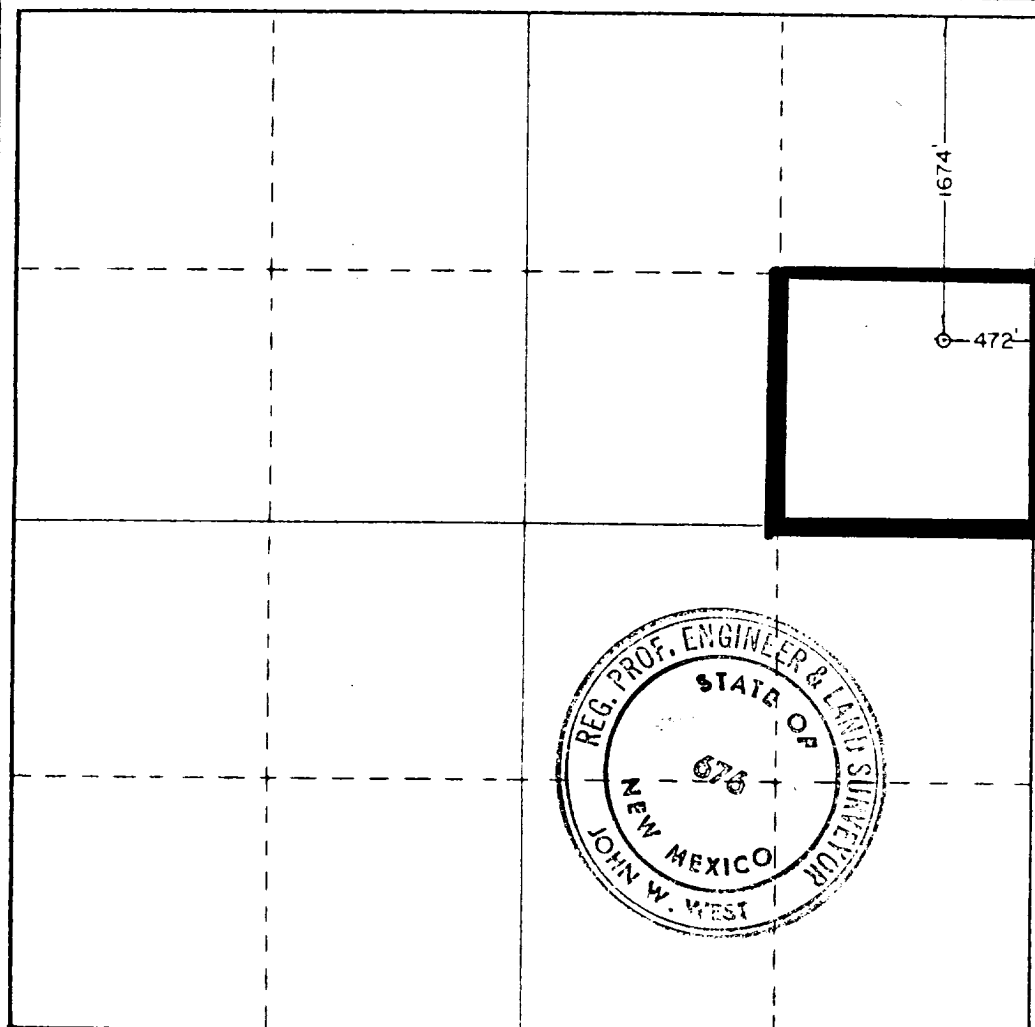
| | | | | | | | | |
|--|-------------------------------------|-----------------------------|-----------------------------------|----------------------|--|---------------------------------|--|--|
| Operator DOYLE HARTMAN | | | Lease PHILLIPS GOLDSTON | | | Well No. 2 | | |
| Unit Letter H | Section 26 | Township 24 SOUTH | Range 36 EAST | County LEA | | | | |
| Actual Well Location of Well: 1674 feet from the NORTH line and 472 feet from the EAST line | | | | | | | | |
| Ground Level Elev. 3309.1 | Producing Formation Yates | | Permit Jalmit (Oil) | | | Dedicated Acreage: 40 | | |

1. Outline the acreage dedicated to the subject well by colored pencil or hachure marks on the plat below.
2. If more than one lease is dedicated to the well, outline each and identify the ownership thereof (both as to working interest and royalty).
3. If more than one lease of different ownership is dedicated to the well, have the interests of all owners been consolidated by communitization, unitization, force-pooling, etc?

☐ Yes ☐ No If answer is "yes," type of consolidation _____

If answer is "no," list the owners and tract descriptions which have actually been consolidated. (Use reverse side of this form if necessary.) _____

No allowable will be assigned to the well until all interests have been consolidated (by communitization, unitization, forced-pooling, or otherwise) or until a non-standard unit, eliminating such interests, has been approved by the Commission.



CERTIFICATION

I hereby certify that the information contained herein is true and complete to the best of my knowledge and belief.

Doyle Hartman

Name
Doyle Hartman

Position
Operator

Company
Individual

Date
August 6, 1979

I hereby certify that the well location shown on this plat was plotted from field notes of actual surveys made by me or under my supervision, and that the same is true and correct to the best of my knowledge and belief.

Date Surveyed
JULY 26TH, 1979

Registered Professional Engineer and/or Land Surveyor

John W. West

Certificate No. **John W. West 676**
Ronald J. Eidson 3239

113

RECEIVED
AUG 7 1973
O.C.D. HOBBS, OFFICE