

## NEW MEXICO OIL CONSERVATION COMMISSION

3-NMOCD-Hobbs (Lea Co.)  
1-R.J. Starrak-Tulsa  
1-A.B. Cary-Midland  
1-Engr. JM  
1-File

Form C-101  
Revised 1-1-65

5A. Indicate Type of Lease	
STATE <input type="checkbox"/>	FEE <input checked="" type="checkbox"/>
5. State Oil & Gas Lease No.	
--	

## APPLICATION FOR PERMIT TO DRILL, DEEPEN, OR PLUG BACK

[illegible]

### PROPOSED CASING AND CEMENT PROGRAM

SIZE OF HOLE	SIZE OF CASING	WEIGHT PER FOOT	SETTING DEPTH	SACKS OF CEMENT	EST. TOP
11	8 5/8	24	500'	300	Surface
7 7/8	5 1/2	15.5	3750'	1200	Surface

The proposed well will be drilled from the surface to a total depth of 3750' with rotary tools. The pump and plug process will be used in cementing all strings of casing and cement will be circulated to the surface on the 8 5/8" and 5 1/2" casing. The 5 1/2" casing will be perforated as indicated by electric logs opposite the Queen formation.

The drilling fluid will be brine water and mud of sufficient weight to condition the hole for logging and running casing. Blowout preventers will be installed and tested to 5000 psi. See attached BOP schematic.

APPROVAL VALID  
FOR 90 DAYS UNLESS  
DRILLING COMMENCEMENT  
EXPIRES 10-7-80

IN ABOVE SPACE DESCRIBE PROPOSED PROGRAM; IF PROPOSAL IS TO DEEPEN OR PLUG BACK, GIVE DATA ON PRESENT PRODUCTIVE ZONE AND PROPOSED NEW PRODUCTIVE ZONE. GIVE BLOWOUT PREVENTER PROGRAM, IF ANY.

I hereby certify that the information above is true and complete to the best of my knowledge and belief.

Signed D. H. Park Title Area Superintendent Date June 30, 1980

Dale R. Crockett  
(This space for State Use)

APPROVED BY [Signature] TITLE \_\_\_\_\_

**SUPERVISOR DISTRICT**

DATE \_\_\_\_\_

~~CONDITIONS OF APPROVAL, IF ANY:~~

NEW MEXICO OIL CONSERVATION COMMISSION  
WELL LOCATION AND ACREAGE DEDICATION AT

Form O-128  
Supersedes O-128  
Effective 1-1-65

All distances must be from the outer boundaries of the Section.

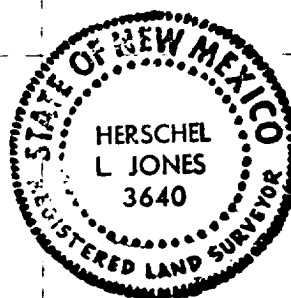
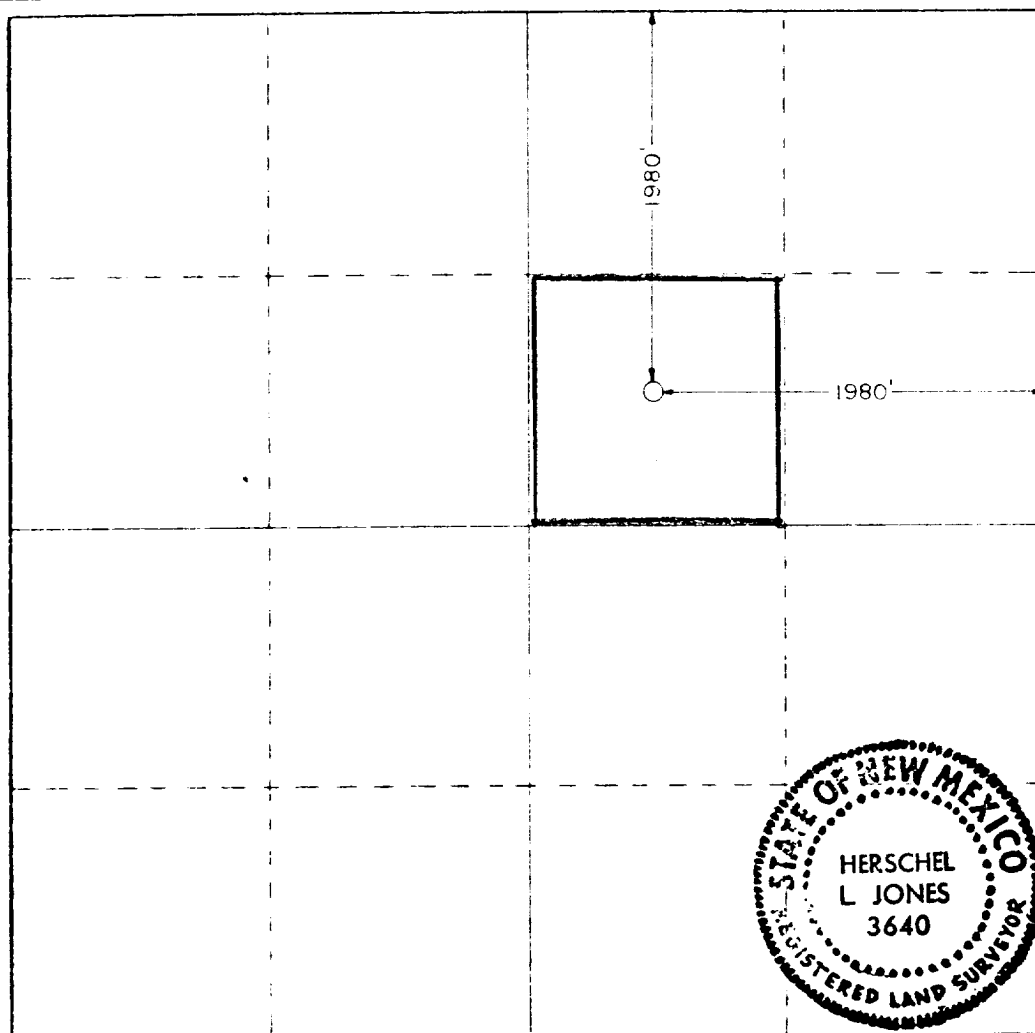
GETTY OIL COMPANY			Myers Langlie Mattix Unit		Section 148
Section	Quarter	Township	Range	County	
G	4	24 South	37 East	Lea	
Actual location of well:					
1980	feet from the	North	line and	1980	feet from the East line
Ground Level Elev.	Producing Formation		Pool	Dedicated Acreage:	
3273	Queen		Langlie Mattix	40 Acres	

- Outline the acreage dedicated to the subject well by colored pencil or hatchure marks on the plat below.
- If more than one lease is dedicated to the well, outline each and identify the ownership thereof (both as to working interest and royalty).
- If more than one lease of different ownership is dedicated to the well, have the interests of all owners been consolidated by communitization, unitization, or e-pooling, etc?

☒ Yes ☐ No If answer is "yes," type of consolidation \_\_\_\_\_

If answer is "no," list the owners and tract descriptions which have actually been consolidated. (Use reverse side of this form if necessary.) \_\_\_\_\_

No allowable will be assigned to the well until all interests have been consolidated (by communitization, unitization, forced-pooling, or otherwise) or until a non-standard unit, eliminating such interests, has been approved by the Commission.



CERTIFICATION

I hereby certify that the information contained herein is true and complete to the best of my knowledge and belief.

*Dale R. Crockett*

DALE R. CROCKETT

AREA SUPERINTENDENT

GETTY OIL COMPANY

June 30, 1980

I hereby certify that the well location shown on this plat was plotted from field notes of actual surveys made by me or under my supervision, and that the same is true and correct to the best of my knowledge and belief.

Date: 6-17-80

Registered Professional Engineer  
and Land Surveyor

*Herschel L. Jones*  
3640