

NEW MEXICO OIL CONSERVATION COMMISSION
WELL LOCATION AND ACREAGE DEDICATION PLAT

Form C-102
Supersedes C-128
Effective 1-1-65

All distances must be from the outer boundaries of the Section

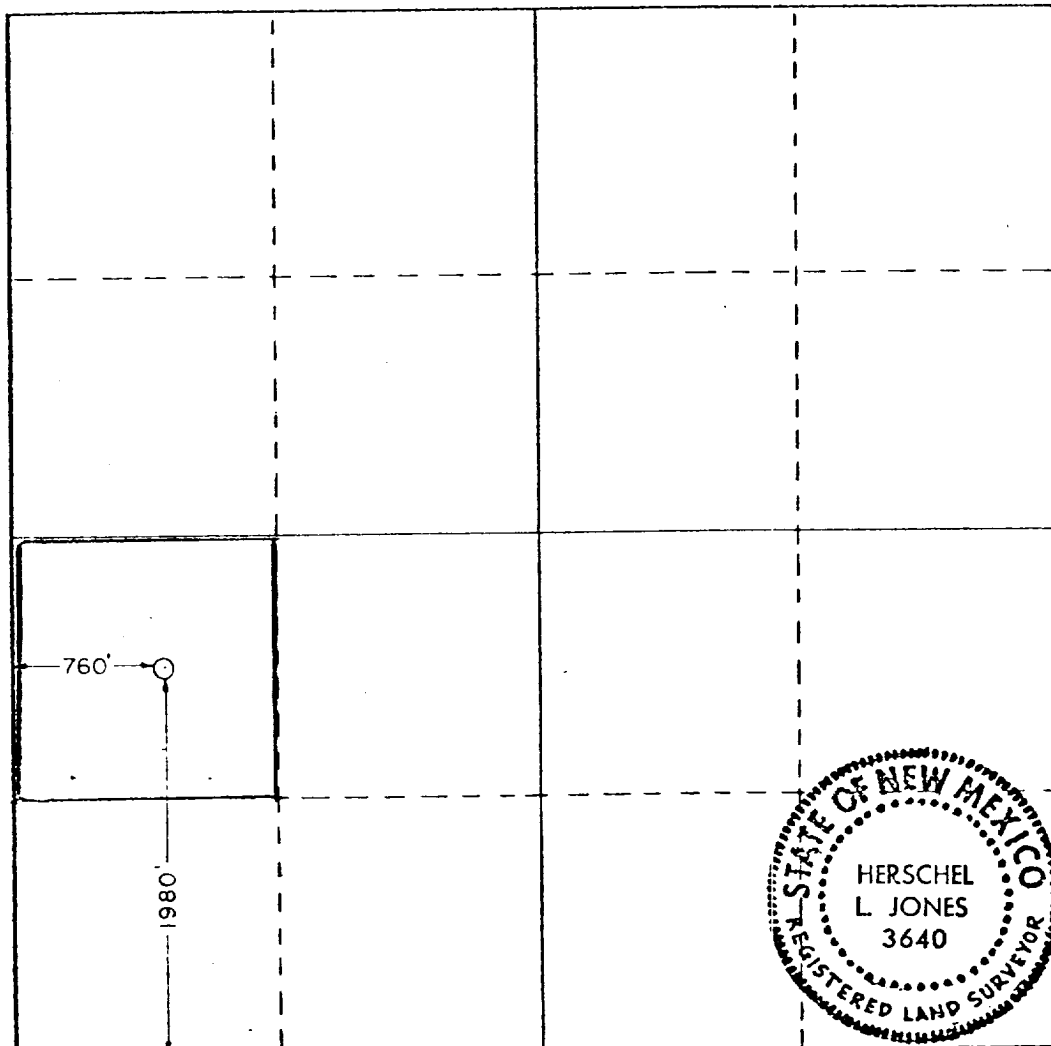
Operator GETTY OIL COMPANY		Lease Myers Langlie Mattix Unit		Well No. 234
Unit Letter L	Section 8	Township 24 South	Range 37 East	County Lea
Actual Footage Location of Well: 1980 feet from the South line and 760 feet from the West line				
Ground Level Elev. 3303	Producing Formation Queen	Pool Langlie Mattix	Dedicated Acreage: 40 Acres	

1. Outline the acreage dedicated to the subject well by colored pencil or hachure marks on the plat below.
2. If more than one lease is dedicated to the well, outline each and identify the ownership thereof (both as to working interest and royalty).
3. If more than one lease of different ownership is dedicated to the well, have the interests of all owners been consolidated by communitization, unitization, force-pooling, etc?

☐ Yes ☐ No If answer is "yes," type of consolidation _____

If answer is "no," list the owners and tract descriptions which have actually been consolidated. (Use reverse side of this form if necessary.) _____

No allowable will be assigned to the well until all interests have been consolidated (by communitization, unitization, forced-pooling, or otherwise) or until a non-standard unit, eliminating such interests, has been approved by the Commission.



CERTIFICATION

I hereby certify that the information contained herein is true and complete to the best of my knowledge and belief.

Name
DALE R. CROCKETT

Position
AREA SUPERINTENDENT

Company
GETTY OIL COMPANY

Date
JUNE 30, 1980

I hereby certify that the well location shown on this plat was plotted from field notes of actual surveys made by me or under my supervision, and that the same is true and correct to the best of my knowledge and belief.

Date Surveyed

6-18-80

Registered Professional Engineer and/or Land Surveyor

Certificate No.

3640

RECEIVED
JUL 2 1980
OR CONSERVATION DIV.

RECEIVED
JUL 3 1980
U.S. DEPT. OF AGRICULTURE