

NEW MEXICO OIL CONSERVATION COMMISSION  
WELL LOCATION AND ACREAGE DEDICATION PLAT

Form C-102  
Supersedes C-128  
Effective 1-1-65

All distances must be from the outer boundaries of the Section.

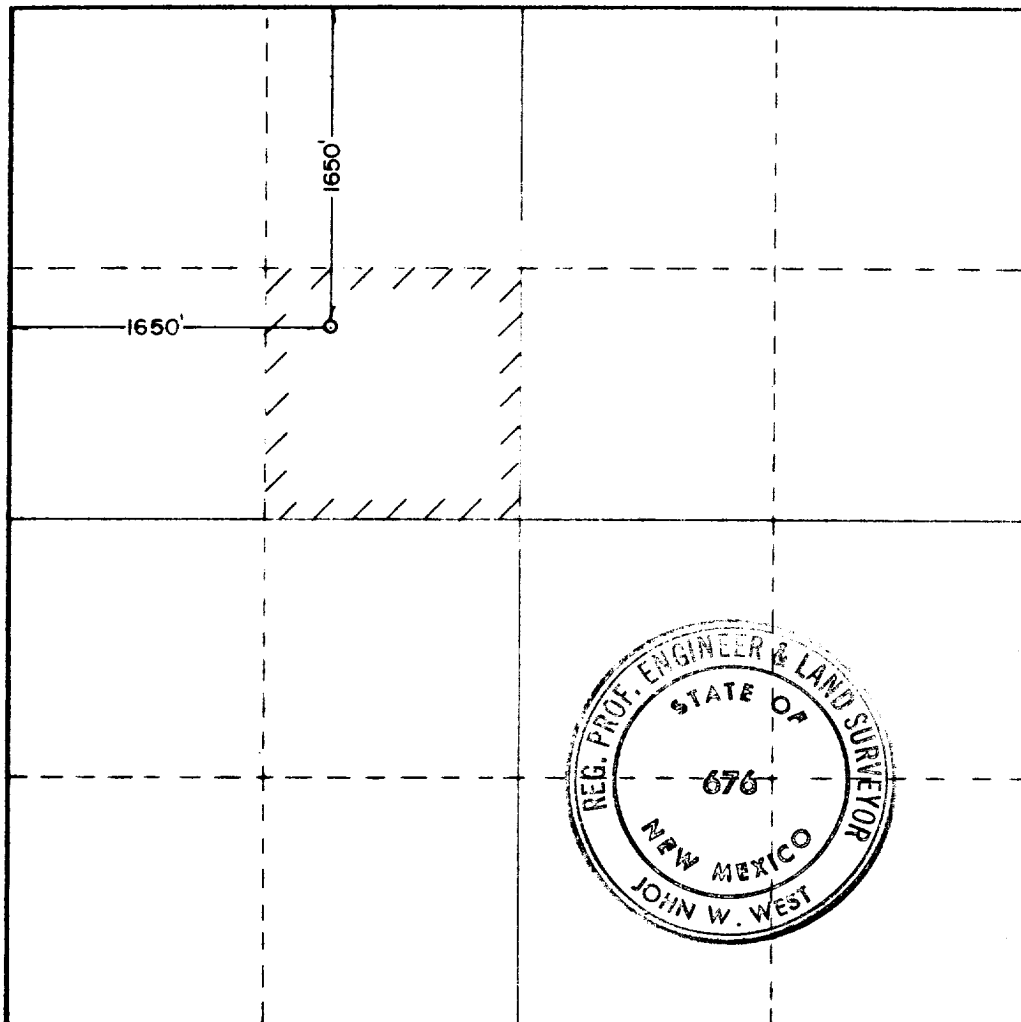
Operator <b>Millard Deck</b>			Lease <b>Possh</b>		Well No. <b>2</b>
Unit Letter <b>F</b>	Section <b>36</b>	Township <b>24 South</b>	Range <b>36 East</b>	County <b>Lea</b>	
Actual Footage Location of Well: <b>1650</b> feet from the <b>North</b> line and <b>1650</b> feet from the <b>West</b> line					
Ground Level Elev. <b>3268.3</b>	Producing Formation <b>Queen</b>		Pool <b>Langlie Mattix</b>	Dedicated Acreage: <b>40</b> Acres	

1. Outline the acreage dedicated to the subject well by colored pencil or hatchure marks on the plat below.
2. If more than one lease is dedicated to the well, outline each and identify the ownership thereof (both as to working interest and royalty).
3. If more than one lease of different ownership is dedicated to the well, have the interests of all owners been consolidated by communitization, unitization, force-pooling, etc?

☐ Yes ☒ No If answer is "yes," type of consolidation \_\_\_\_\_

If answer is "no," list the owners and tract descriptions which have actually been consolidated. (Use reverse side of this form if necessary.) \_\_\_\_\_

No allowable will be assigned to the well until all interests have been consolidated (by communitization, unitization, forced-pooling, or otherwise) or until a non-standard unit, eliminating such interests, has been approved by the Commission.



CERTIFICATION

I hereby certify that the information contained herein is true and complete to the best of my knowledge and belief.

Name  
**Mr. Nelson**

Position  
**Engineer**

Company  
**Millard Deck**

Date  
**7-30-1980**

I hereby certify that the well location shown on this plat was plotted from field notes of actual surveys made by me or under my supervision, and that the same is true and correct to the best of my knowledge and belief.

Date Surveyed  
**July 30, 1980**

Registered Professional Engineer and Land Surveyor

*John W. West*

Certificate No. **JOHN W. WEST 676**  
**PATRICK A. ROMERO 6883**  
**Ronald J. Eldson 3239**

0 330 660 990 1320 1650 1980 2310 2640 2000 1500 1000 500

RECEIVED

AUG 4 1980

OIL CONSERVATION DIV

12/30/96 by: Rofite  
EIT



## RE-ISSUED COMPLETION

COUNTY **LEA** FIELD **Langlie-Mattix** STATE **NM**  
OPR **DECK, MILLARD** API **30-025- 2965**  
NO **2** LEASE **Possh** MAP  
Sec **36, T24S, R36E** CO-ORD  
1650 FNL, 1650 FWL of Sec 12-3-33 NM  
7 mi NW/Jal SPD 8-25-80 CMP 10-21-80

CSC

8 5/8-371-300 sx  
5 1/2-3750-1100 sx  
2 3/8-3641

WELL CLASS: INIT D FIN DO LSE. CODE

FORMATION	DATUM	FORMATION	DATUM
TD 3750 (QUEN)		PBD 3693	

IP (Queen) Perfs 3553-3627 P 3 BOPD + 20 B W. Pot  
based on 24 hr test. GOR 16,667; gty 34.3

CONTR **Cactus** OPRSELEV **3268 GL** PD **3700 RT**

F.R. 8-11-80  
(Queen)

12-15-80 TD 3750; PBD 3693; Complete  
Perf (Queen) 3553-3627 (overall)  
Acid (3553-3627) 900 gals  
LOG TOPS: Rustler Anhydrite 1170, Salt 1300,  
Base Salt 2600, Yates 2767, Seven Rivers  
2995, Queen 3394  
12-20-80 COMPLETION ISSUED  
2-14-81 RE-ISSUE TO AMEND SECTION: Formerly  
reported as Sec 32

12-3-33 NM  
IC 30-025-70385-80