

COPY TO O. C. C.

SUBMIT IN DUPLICATE\*

Form approved.  
Budget Bureau No. 42-R1425.UNITED STATES  
DEPARTMENT OF THE INTERIOR  
GEOLOGICAL SURVEY(Other instructions on  
reverse side)

30 025-27053

## APPLICATION FOR PERMIT TO DRILL, DEEPEN, OR PLUG BACK

## 1a. TYPE OF WORK

DRILL ☒DEEPEN ☐PLUG BACK ☐

## b. TYPE OF WELL

OIL  
WELL ☒GAS  
WELL ☐

OTHER

SINGLE  
ZONE ☐MULTIPLE  
ZONE ☐

## 2. NAME OF OPERATOR

HNG Oil Company

## 3. ADDRESS OF OPERATOR

P.O. Box 2267 Midland, Texas 79702

## 4. LOCATION OF WELL (Report location clearly and in accordance with any State requirements.\*)

At surface

740' FSL &amp; 750' FWL

At proposed prod. zone

430' FSL &amp; 730' FWL

## 14. DISTANCE IN MILES AND DIRECTION FROM NEAREST TOWN OR POST OFFICE\*

6 miles South from Jal

## 15. DISTANCE FROM PROPOSED\*

660'

LOCATION TO NEAREST

PROPERTY OR LEASE LINE, FT.

(Also to nearest drig. unit line, if any)

660'

## 18. DISTANCE FROM PROPOSED LOCATION\*

TO NEAREST WELL, DRILLING, COMPLETED,  
OR APPLIED FOR, ON THIS LEASE, FT.

1320'

## 16. NO. OF ACRES IN LEASE

480

17. NO. OF ACRES ASSIGNED  
TO THIS WELL

40

## 19. PROPOSED DEPTH

3900'

## 20. ROTARY OR CABLE TOOLS

Rotary

## 21. ELEVATIONS (Show whether DF, RT, GR, etc.)

2947' GR

## 22. APPROX. DATE WORK WILL START\*

10-30-80

## 23.

## PROPOSED CASING AND CEMENTING PROGRAM

SIZE OF HOLE	SIZE OF CASING	WEIGHT PER FOOT	SETTING DEPTH	QUANTITY OF CEMENT
11"	8-5/8"	24#	1400'	850 sx circulated
7-7/8"	5-1/2"	14#	3900'	650 sx.

## Pressure Control Program

A double blow-out preventer and rotating head with a choke manifold will be installed at the 8-5/8 inch casing setting point. The drill string will be equipped with a safety valve. All equipment will be tested to 3000 pounds after installation.

Acreage is dedicated.

RECEIVED

JUL 7 1980

U. S. GEOLOGICAL SURVEY  
HOBBS, NEW MEXICO

IN ABOVE SPACE DESCRIBE PROPOSED PROGRAM: If proposal is to deepen or plug back, give data on present productive zone and proposed new productive zone. If proposal is to drill or deepen directionally, give pertinent data on subsurface locations and measured and true vertical depths. Give blowout preventer program, if any.

## 24.

SIGNED

Betty A. Gildon

TITLE Regulatory Clerk

DATE June 24, 1980

(This space for Federal or State office use)

PERMIT NO.

APPROVAL DATE

(Orig. Sgd.) GEORGE H. STEWART

ACTING DISTRICT ENGINEER

APPROVED BY

TITLE

DATE SEP 10 1980

CONDITIONS OF APPROVAL, IF ANY:

AMENDED PLAT SHOWING  
LOCATION MOVED 200 FEET TO THE SOUTH

NEW MEXICO OIL CONSERVATION COMMISSION  
WELL LOCATION AND ACREAGE DEDICATION PLAT

Form C-102  
Supersedes C-128  
Effective 1-1-65

All distances must be from the outer boundaries of the Section

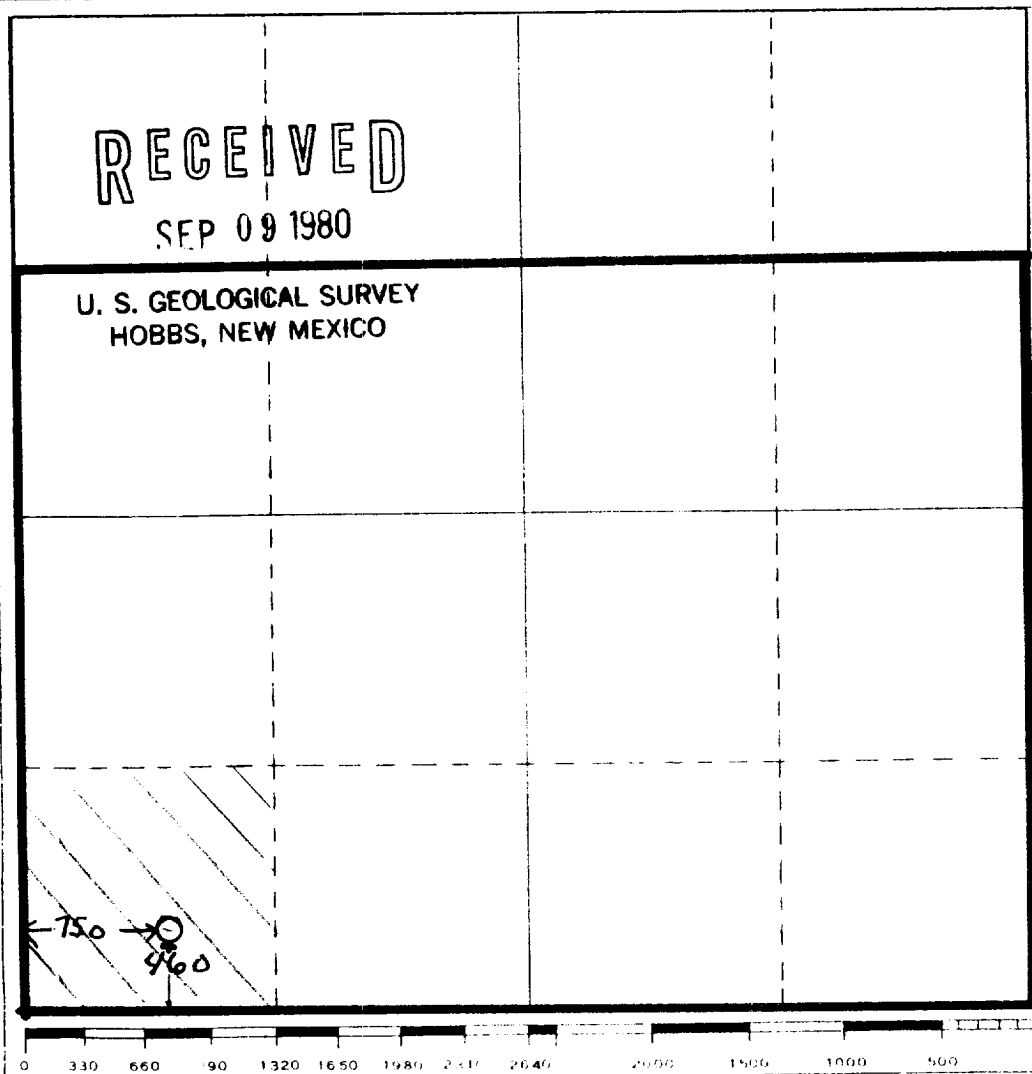
Operator <b>H.N.G. OIL COMPANY</b>			Location <b>Wilson 17 Federal</b>		Well No. <b>12</b>
Grid Letter <b>M</b>	Section <b>17</b>	Township <b>26-S</b>	Range <b>36-E</b>	County <b>Lea</b>	
Actual Well Location of Well:					
<b>460</b> feet from the <b>South</b>		<b>750'</b> feet from the <b>West</b>		Line	
Actual Elevation <b>2947'</b>	Permitting Party <b>Yates</b>	County <b>Sioux</b>		Dedicated Acreage <b>40</b>	Acres

1. Outline the acreage dedicated to the subject well by colored pencil or hatchure marks on the plat below.
2. If more than one lease is dedicated to the well, outline each and identify the ownership thereof (both as to working interest and royalty).
3. If more than one lease of different ownership is dedicated to the well, have the interests of all owners been consolidated by communitization, unitization, force-pooling, etc?

☐ Yes ☐ No If answer is "yes," type of consolidation \_\_\_\_\_

If answer is "no," list the owners and tract descriptions which have actually been consolidated. (Use reverse side of this form if necessary.) \_\_\_\_\_

No allowable will be assigned to the well until all interests have been consolidated (by communitization, unitization, forced-pooling, or otherwise) or until a non-standard unit, eliminating such interests, has been approved by the Commission.



CERTIFICATION

I hereby certify that the information contained herein is true and complete to the best of my knowledge and belief.

*Betty A. Gildon*

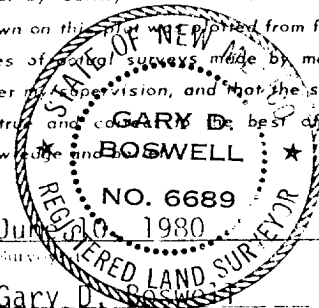
Name  
Betty A. Gildon

Position  
Regulatory Clerk

Company  
HNG Oil Company

Date  
September 8, 1980

I hereby certify that the well location shown on this plat was derived from field notes of actual surveys made by me or under my supervision, and that the same is true and correct to the best of my knowledge and belief.



Date Surveyed  
Gary D. Boswell

Registered Professional Engineer and Land Surveyor

*Gary D. Boswell*

Certification No. 6689

APPLICATION FOR PERMIT TO DRILL

1. The geologic surface formation is Quaternary.

2. The estimated tops of important geologic markers are:

- |                                          |           |
|------------------------------------------|-----------|
| 1. <u>Tansill - 3200 feet</u>            | 6. _____  |
| 2. <u>Yates - 3400 feet</u>              | 7. _____  |
| 3. <u>Seven Rivers (Pay) - 3600 feet</u> | 8. _____  |
| 4. _____                                 | 9. _____  |
| 5. _____                                 | 10. _____ |

3. Depths at which oil, water, or gas bearing formations are expected to be encountered.

Tansill - 3200 - 3400  
Yates - 3400 - 3600  
Seven Rivers (Pay) - 3600 to TD

4. Brief description of testing, logging, and coring programs.

Will probably run open hole logs, gamma ray sonic w/ caliper, dual lateral logs (DLL), compensated neutron log (CNL) at TD, pulling the gamma ray to surface thru pipe which will be set at about 1400 feet.

5. Any anticipated abnormal pressures or temperatures expected? Any potential hazards - E2S?

None expected.

1. (A) Pressure control equipment to be used.

900 series double Cameron type "U" BOP/blind rams and pipe rams. BOP can be activated from closing unit. Drill string safety valve can be installed at surface casing point.

- (B) Pressure ratings (or API series).

900 series 3000 psi

- (C) Testing procedures and frequency.

BOP's will be tested at installation point

- (D) Schematic Diagram.

Attached

2. Mud Program

Type and Characteristics

0-1000 Native  
1000- TD 10.0 ppg brine water

Quantities and types of weighting material to be maintained

200 sx Barite on location