

COPY TO O. O. C.

SUBMIT IN TRIPLICATE

(Other instruction:  
reverse side)Form approved.  
Budget Bureau No. 42-R1425.UNITED STATES  
DEPARTMENT OF THE INTERIOR  
GEOLOGICAL SURVEY

30-025-27134

5. LEASE DESIGNATION AND SERIAL NO.

NM-079540

6. IF INDIAN, ALLOTTEE OR TRIBE NAME

7. UNIT AGREEMENT NAME

8. FARM OR LEASE NAME

CONOCO 31 FEDERAL

9. WELL NO.

1

10. FIELD AND POOL, OR WILDCAT

UNDESIGNATED D-K ABO

11. SEC., T., R., M., OR BLK.  
AND SURVEY OR AREA

SEC. 31, T. 20 S., R. 39 E.

12. COUNTY OR PARISH

LEA

13. STATE

NEW MEXICO

## APPLICATION FOR PERMIT TO DRILL, DEEPEN, OR PLUG BACK

a. TYPE OF WORK

DRILL ☒DEEPEN ☐PLUG BACK ☐

b. TYPE OF WELL

OIL  
WELL ☒GAS  
WELL ☐

OTHER

SINGLE  
ZONE ☒MULTIPLE  
ZONE ☐

c. NAME OF OPERATOR

POST PETROLEUM COMPANY, INC.

d. ADDRESS OF OPERATOR

WESTERN UNITED LIFE BLDG., SUITE 730

MIDLAND, TEXAS 79701

e. LOCATION OF WELL (Report location clearly and in accordance with any State requirements.)\*

At surface

2173' FSL AND 660' FWL OF SECTION 31

At proposed prod. zone

f. DISTANCE IN MILES AND DIRECTION FROM NEAREST TOWN OR POST OFFICE\*

12 MILES SOUTH OF HOBBS, NEW MEXICO

g. DISTANCE FROM PROPOSED\*

LOCATION TO NEAREST  
PROPERTY OR LEASE LINE, FT.  
(Also to nearest drig. unit line, if any)

467'

h. NO. OF ACRES IN LEASE

640

i. NO. OF ACRES ASSIGNED

TO THIS WELL

40

j. DISTANCE FROM PROPOSED LOCATION\*

TO NEAREST WELL, DRILLING, COMPLETED,  
OR APPLIED FOR, ON THIS LEASE, FT.

--

k. PROPOSED DEPTH

7600'

l. ROTARY OR CABLE TOOLS

ROTARY

m. ELEVATIONS (Show whether DF, RT, GR, etc.)

3567.2 GR

n. APPROX. DATE WORK WILL START\*

UPON APPROVAL

## 3. PROPOSED CASING AND CEMENTING PROGRAM

SIZE OF HOLE	SIZE OF CASING	WEIGHT PER FOOT	SETTING DEPTH	QUANTITY OF CEMENT
17-1/2"	13-3/8"	48# H-40	30	10 YARDS REDI-MIX
12-1/4"	8-5/8"	24# K-55	1650	990 SACKS - CIRCULATE
7-7/8"	5-1/2"	14,15.5,17#K-55	7600	730 SACKS

AFTER SETTING 5-1/2" CASING, PAY ZONE WILL BE PERFORATED AND STIMULATED  
AS REQUIRED.SEE ATTACHED FOR: SUPPLEMENTAL DRILLING DATA  
BOP SKETCH  
SURFACE USE AND OPERATIONS PLAN  
SURFACE RESTORATION REQUIREMENTS.

RECEIVED

OCT 17 1980

4. ABOVE SPACE DESCRIBE PROPOSED PROGRAM: If proposal is to deepen or plug back, give data on present productive zone and proposed new productive zone. If proposal is to drill or deepen directionally, give pertinent data on subsurface locations and measured depths, vertical depth, and give blowout preventer program, if any.

SIGNED

Arthur R. Brown

Agent for

TITLE POST PETROLEUM COMPANY, INC. DATE OCTOBER 16, 1980

(This space for Federal or State office use)

PERMIT NO.

APPROVAL DATE

(Sigs. Seal) GEORGE H. STEWART

APPROVED BY

TITLE

DATE

OCT 31 1980

CONDITIONS OF APPROVAL, IF ANY:

\*See Instructions On Reverse Side

NEW MEXICO OIL CONSERVATION COMMISSION  
WELL LOCATION AND ACREAGE DEDICATION PLAT

Form C-102  
Supersedes C-128  
Effective 1-1-83

All distances must be from the outer boundaries of the Section.

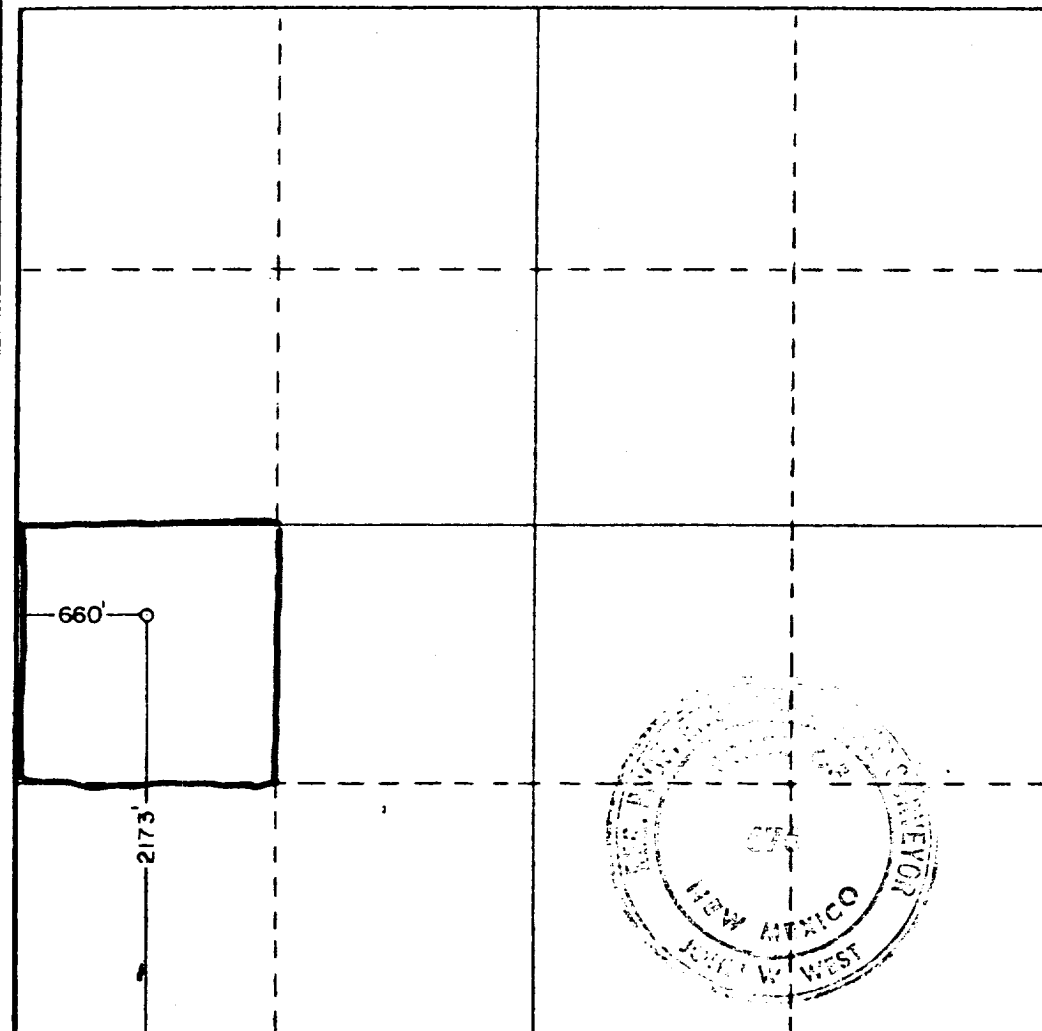
Operator <b>POST PETROLEUM COMPANY, INC.</b>		Lease <b>CONOCO 31 FEDERAL</b>		Well No. <b>1</b>
Tract Letter <b>L 215</b>	Section <b>31</b>	Township <b>20 South</b>	Range <b>39 East</b>	County <b>Lea</b>
Actual Footage Location of Well: <b>2173</b> feet from the <b>South</b> line and <b>660</b> feet from the <b>West</b> line				
Ground Level Elev. <b>3567.2</b>	Producing Formation <b>ABO</b>	Pool <b>UNDESIGNATED D-K ABO</b>	Dedicated Acreage: <b>40</b> Acres	

1. Outline the acreage dedicated to the subject well by colored pencil or hatchure marks on the plat below.
2. If more than one lease is dedicated to the well, outline each and identify the ownership thereof (both as to working interest and royalty).
3. If more than one lease of different ownership is dedicated to the well, have the interests of all owners been consolidated by communitization, unitization, force-pooling, etc?

☐ Yes ☐ No If answer is "yes," type of consolidation \_\_\_\_\_

If answer is "no," list the owners and tract descriptions which have actually been consolidated. (Use reverse side of this form if necessary.) \_\_\_\_\_

No allowable will be assigned to the well until all interests have been consolidated (by communitization, unitization, forced-pooling, or otherwise) or until a non-standard unit, eliminating such interests, has been approved by the Commission.



CERTIFICATION

I hereby certify that the information contained herein is true and complete to the best of my knowledge and belief.

Name *Arthur R. Brown*  
**Arthur R. Brown**

Position  
**Agent for**

Company  
**POST PETROLEUM COMPANY, INC.**

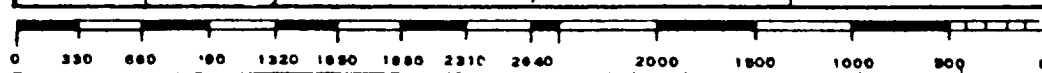
Date  
**OCTOBER 15, 1980**

I hereby certify that the well location shown on this plat was plotted from field notes of actual surveys made by me or under my supervision, and that the same is true and correct to the best of my knowledge and belief.

Date Surveyed  
**8-22-80**

Registered Professional Engineer and/or Land Surveyor

*John W. West*  
Certificate No. **JOHN W. WEST 676**  
**PATRICK A. ROMERO 6663**  
**Ronald J. Eldson 3239**



## SUPPLEMENTAL DRILLING DATA

POST PETROLEUM COMPANY, INC.  
WELL NO.1 CONOCO 31 FEDERAL

1. SURFACE FORMATION: Tertiary.
2. ESTIMATED TOPS OF GEOLOGIC MARKERS:

Rustler	1600
Yates	3470
Seven Rivers	3050
San Andres	4300
Glorieta	5600
Blinebry	6000
Tubb	6600
Drinkard	6850
Abo	7300

3. ANTICIPATED POSSIBLE WATER AND HYDROCARBON BEARING ZONES:

Fresh Water	Above 300 feet
Oil	Blinebry
Oil	Tubb
Oil	Drinkard
Oil	Abo

4. PROPOSED CASING AND CEMENTING PROGRAM:

CASING SIZE	SETTING DEPTH		WEIGHT	GRADE	JOINT
	FROM	TO			
13-3/8"	0	30	48#	H-40	STC
8-5/8"	0	1650	24#	K-55	STC
5-1/2"	0	800	15.5#	K-55	STC
"	800	5100	14#	K-55	STC
"	5100	6700	15.5#	K-55	STC
"	6700	7600	17#	K-55	STC

13-3/8" conductor casing will be cemented to the bottom of the cellar with 10 yards of redi-mix.

8-5/8" casing will be cemented with 740 sacks of Class "C" with 4 percent gel plus 250 sacks of Class "C". Cement to circulate.

5-1/2" casing will be cemented with 150 sacks of "Light" with 10 percent salt plus 580 sacks of Class "H".

Cement quantities and additives may be varied to best suit hole conditions at the time casing is run.

5. PRESSURE CONTROL EQUIPMENT:

Blowout preventer equipment will consist of a double ram, 3000 psi working pressure preventer.

A sketch of the BOP stack is attached.

6. CIRCULATING MEDIUM:

Surface to 1650 feet; Fresh water with gel or lime as needed for viscosity control.

1650 feet to 7000 feet; Brine water treated as necessary for viscosity control.

7000 feet to Total Depth: Salt gel with 8 to 10 percent oil, conditioned as necessary for control of viscosity and water-loss.

7. AUXILIARY EQUIPMENT:

Drill string safety valves will be maintained on the rig floor in the open position while drilling operations are in progress.

A mud logger will be in use while drilling below 3000 feet.

8. TESTING, LOGGING AND CORING PROGRAMS:

Drill stem tests will be made if samples, drilling rate and mud logging data are sufficient to indicate a test is warranted.

It is planned that electric logs will include a CNL-FDC with caliper and Gamma Ray and dual induction logs.

No coring is planned.

9. ABNORMAL PRESSURES, TEMPERATURES OR HYDROGEN SULFIDE GAS:

None anticipated.

10. ANTICIPATED STARTING DATE:

It is planned that drilling operations may commence on or about November 1, 1980, with drilling and completion operations lasting about 45 days.