

UNITED STATES
DEPARTMENT OF THE INTERIOR
GEOLOGICAL SURVEY

APPLICATION FOR PERMIT TO DRILL, DEEPEN, OR PLUG BACK

1a. TYPE OF WORK

DRILL ☒DEEPEN ☐PLUG BACK ☐

b. TYPE OF WELL

OIL
WELL ☒GAS
WELL ☐

OTHER

SINGLE
ZONE ☒MULTIPLE
ZONE ☐

2. NAME OF OPERATOR

ADAMS EXPLORATION COMPANY

3. ADDRESS OF OPERATOR

P. O. BOX 10585, MIDLAND, TEXAS 79702

4. LOCATION OF WELL (Report location clearly and in accordance with any State requirements.)*

At surface

2080' FNL & 1980' FWL OF SECTION 1

At proposed prod. zone

14. DISTANCE IN MILES AND DIRECTION FROM NEAREST TOWN OR POST OFFICE*

6 MILES NORTHWEST OF CROSSROADS, NEW MEXICO

15. DISTANCE FROM PROPOSED*

LOCATION TO NEAREST

PROPERTY OR LEASE LINE, FT.

(Also to nearest drig. unit line, if any)

1880'

18. DISTANCE FROM PROPOSED LOCATION*
TO NEAREST WELL, DRILLING, COMPLETED,
OR APPLIED FOR, ON THIS LEASE, FT.

1220'

16. NO. OF ACRES IN LEASE

640.15

19. PROPOSED DEPTH

10,000'

17. NO. OF ACRES ASSIGNED
TO THIS WELL

160

20. ROTARY OR CABLE TOOLS

ROTARY

21. ELEVATIONS (Show whether DF, RT, GR, etc.)

4235.1 GR

22. APPROX. DATE WORK WILL START*

DECEMBER 10, 1980

23.

PROPOSED CASING AND CEMENTING PROGRAM

SIZE OF HOLE	SIZE OF CASING	WEIGHT PER FOOT	SETTING DEPTH	QUANTITY OF CEMENT
17-1/2"	12-3/4"	38#	400	SUFFICIENT TO CIRCULATE
11"	8-5/8"	24# & 32#	4000	SUFFICIENT TO CIRCULATE
7-7/8"	5-1/2" OR 4-1/2"	17# OR 11.6#	10,000	350 SACKS

AFTER SETTING PRODUCTION CASING, PAY ZONE WILL BE PERFORATED AND
STIMULATED AS REQUIRED.

RECEIVED

DEC 5 1980

U. S. GEOLOGICAL SURVEY
ALBUQUERQUE, NEW MEXICOSEE ATTACHED FOR: SUPPLEMENTAL DRILLING DATA
SURFACE USE AND OPERATIONS PLAN
SURFACE RESTORATION REQUIREMENTS

IN ABOVE SPACE DESCRIBE PROPOSED PROGRAM: If proposal is to deepen or plug back, give data on present productive zone and proposed new productive zone. If proposal is to drill or deepen directionally, give pertinent data on subsurface locations and measured and true vertical depths. Give blowout preventer program, if any.

24.

SIGNER

Arthur R. Brown

TITLE

Agent for

ADAMS EXPLORATION COMPANY

DATE

DECEMBER 5, 1980

(This space for Federal or State office use)

PERMIT NO.

APPROVAL DATE

APPROVED BY

George H. Stewart

TITLE

Actg District Supervisor

DATE

12-09-80

CONDITIONS OF APPROVAL, IF ANY:

N M EXICO OIL CONSERVATION COMMISS
WELL LOCATION AND ACREAGE DEDICATION PLAT

Form C-102
 Supersedes C-128
 Effective 1-4-65

All distances must be from the outer boundaries of the Section

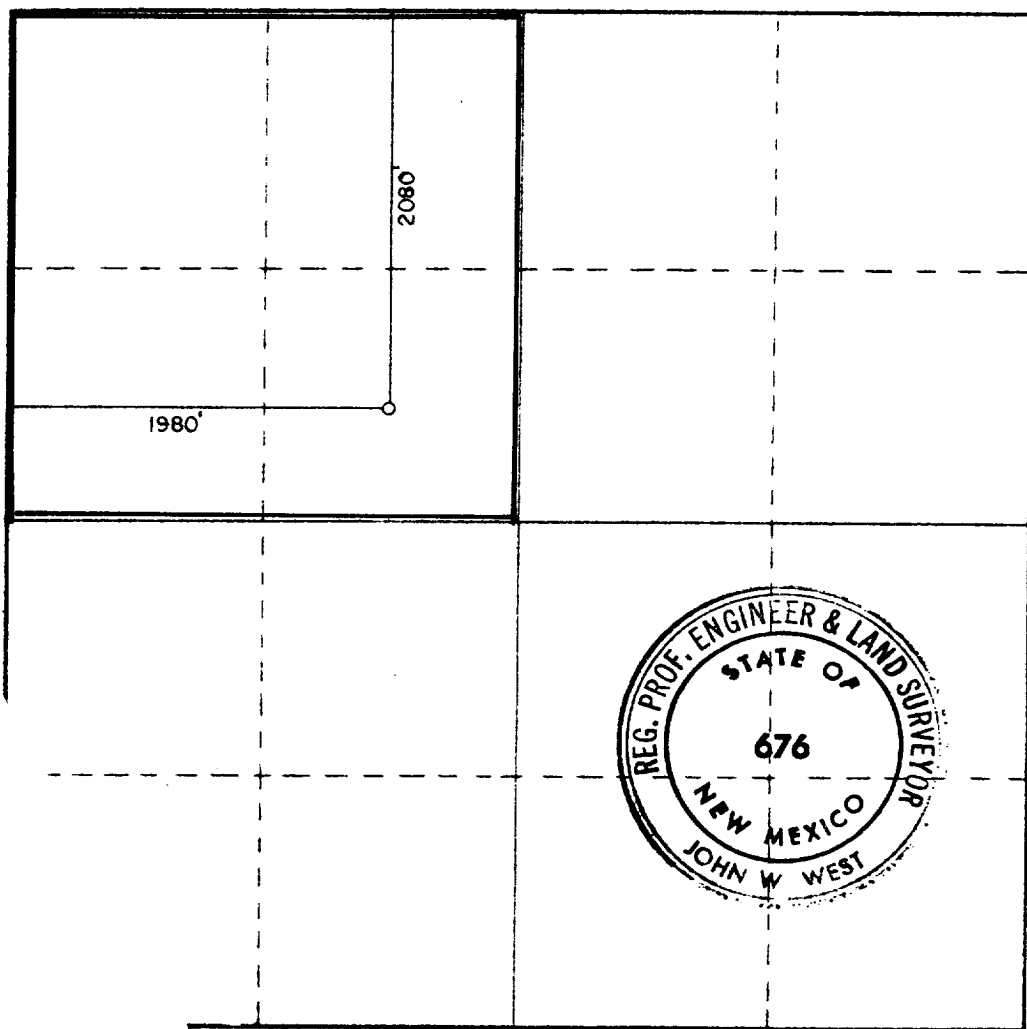
Operator Adams Exploration Co.		Lease Osborne Fed.		Well No. 1
Unit Letter F	Section 1	Township 9 South	Range 34 East	County Lea Co.
Actual Footage Location of Well: 2080 feet from the North line and 1980 feet from the West line				
Ground Level Elev. 4235.1	Producing Formation PENNSYLVANIAN	Pool VADA PENNSYLVANIAN	Dedicated Acreage: 160 Acres	

1. Outline the acreage dedicated to the subject well by colored pencil or hatchure marks on the plat below.
2. If more than one lease is dedicated to the well, outline each and identify the ownership thereof (both as to working interest and royalty).
3. If more than one lease of different ownership is dedicated to the well, have the interests of all owners been consolidated by communitization, unitization, force-pooling, etc?

☐ Yes ☐ No If answer is "yes," type of consolidation _____

If answer is "no," list the owners and tract descriptions which have actually been consolidated. (Use reverse side of this form if necessary.) _____

No allowable will be assigned to the well until all interests have been consolidated (by communitization, unitization, forced-pooling, or otherwise) or until a non-standard unit, eliminating such interests, has been approved by the Commission.



CERTIFICATION

I hereby certify that the information contained herein is true and complete to the best of my knowledge and belief.

Arthur R. Brown
 Arthur R. Brown

Position

Agent for

Company

ADAMS EXPLORATION COMPANY

Date

DECEMBER 5, 1980

I hereby certify that the well location shown on this plat was plotted from field notes of actual surveys made by me or under my supervision, and that the same is true and correct to the best of my knowledge and belief.

Date Surveyed

12-3-80

Registered Professional Engineer and/or Land Surveyor

John W. West

Certificate No. **JOHN W. WEST 676**
PATRICK A. ROMERO 6665
 Donald L. Eideen 3230

1320 1680 1980 2310 2640 2000 1500 1000 500 0