

NO. OF COPIES RECEIVED		
DISTRIBUTION		
SANTA FE		
FILE		
U.S.G.S.		
LAND OFFICE		
OPERATOR		

Form C-101  
Revised 1-1-65

5A. Indicate Type of Lease

STATE	<input type="checkbox"/>	FEE	<input checked="" type="checkbox"/>
-------	--------------------------	-----	-------------------------------------

5. State Oil & Gas Lease No.

2135 9A

**1a. Type of Work**

b. Type of Well

OIL WELL <input checked="" type="checkbox"/>	GAS WELL <input type="checkbox"/>	OTHER	DRILL <input checked="" type="checkbox"/>	DEEPEN <input type="checkbox"/>	PLUG BACK <input type="checkbox"/>

2. Name of Operator  
BASS ENTERPRISES PRODUCTION CO.

3. Address of Operator  
P.O. BOX 2760, MIDLAND, TEXAS 79702

4. Location of Well UNIT LETTER B LOCATED 660 FEET FROM THE North LINE  
AND 1830 FEET FROM THE East LINE OF SEC. 13 TWP. 16S RGE. 36E NMPM

7. Unit Agreement Name	-----
------------------------	-------

8. Farm or Lease Name  
Montieth

9. Well No.	4
-------------	---

10. **UNDESIGNATED**  
N.E. Lovington Penn

12. County	
lea	

		19. Proposed Depth	19A. Formation	20. Rotary or C.T.
		11,900'	Strawn	Rotary
21. Elevations (Show whether DF, RT, etc.)	21A. Kind & Status Plug Bond	21B. Drilling Contractor	22. Approx. Date Work will start	
3859.9 GL	Blanket Single Well	Unknown	Upon Approval	

### PROPOSED CASING AND CEMENT PROGRAM

SIZE OF HOLE	SIZE OF CASING	WEIGHT PER FOOT	SETTING DEPTH	SACKS OF CEMENT	EST. TOP
15"	11 3/4"	42#	360'	500 sx	surface
11"	8 5/8"	24#	4925'	1200 sx	surface
7 7/8"	5 1/2"	17#	TD	1000 sx	7000'

BOP Diagrams attached BEPCO II and BEPCO IV

APPROVAL VALID  
FOR 90 DAYS UNLESS  
DRILLING COMMENCED.

EXPIRES 4/12/81

IN ABOVE SPACE DESCRIBE PROPOSED PROGRAM: IF PROPOSAL IS TO DEEPEN OR PLUG BACK, GIVE DATA ON PRESENT PRODUCTIVE ZONE AND PROPOSED NEW PRODUCTIVE ZONE. GIVE BLOWOUT PREVENTER PROGRAM, IF ANY.

hereby certify that the information above is true and complete to the best of my knowledge and belief.

Signed Stephen Smith Title Engineering Assistant Date 1-5-81

(This space for State Use)

APPROVED BY [Signature] TITLE SUPERVISOR DISTRICT I DATE JAN 12 1981  
 CONDITIONS OF APPROVAL, IF ANY: \_\_\_\_\_

**MEXICO OIL CONSERVATION COMMISSION**  
**WELL LOCATION AND ACREAGE DEDICATION PLAT**

Form C-102  
 Supersedes C-128  
 Effective 1-1-65

All distances must be from the outer boundaries of the Section

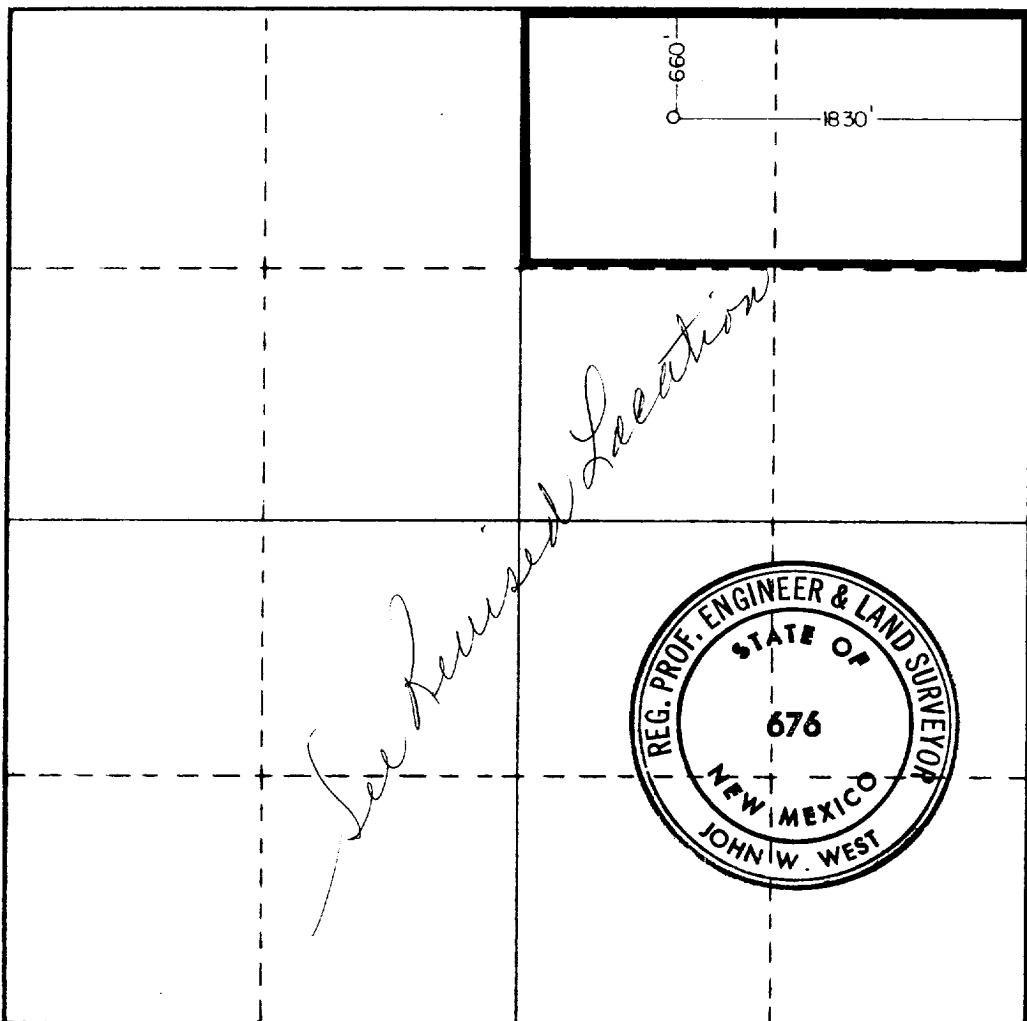
Operator <b>Bass Enterprises Production Co.</b>			Lease <b>Montieth</b>		Well No. <b>4</b>
Tract Letter <b>B</b>	Section <b>13</b>	Township <b>16 South</b>	Range <b>36 East</b>	County <b>Lea</b>	
Actual Footage Location of Well: <b>660</b> feet from the <b>North</b> line and <b>1830</b> feet from the <b>East</b> line					
Ground Level Elev. <b>3845.8</b>	Producing Formation <b>Strawn</b>	Pool <b>N. E. Lovington Penn</b>		Dedicated Acreage: <b>80</b> Acres	

1. Outline the acreage dedicated to the subject well by colored pencil or hatchure marks on the plat below.
2. If more than one lease is dedicated to the well, outline each and identify the ownership thereof (both as to working interest and royalty).
3. If more than one lease of different ownership is dedicated to the well, have the interests of all owners been consolidated by communitization, unitization, force-pooling, etc?

☐ Yes    ☐ No    If answer is "yes," type of consolidation \_\_\_\_\_

If answer is "no," list the owners and tract descriptions which have actually been consolidated. (Use reverse side of this form if necessary.) \_\_\_\_\_

No allowable will be assigned to the well until all interests have been consolidated (by communitization, unitization, forced-pooling, or otherwise) or until a non-standard unit, eliminating such interests, has been approved by the Commission.



**CERTIFICATION**

I hereby certify that the information contained herein is true and complete to the best of my knowledge and belief.

*Stephen Smith*

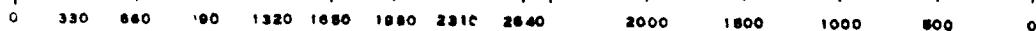
Name  
 Stephen Smith  
 Position  
 Engineering Assistant  
 Company  
 Bass Enterprises Prod. Co.  
 Date  
 December 31, 1980

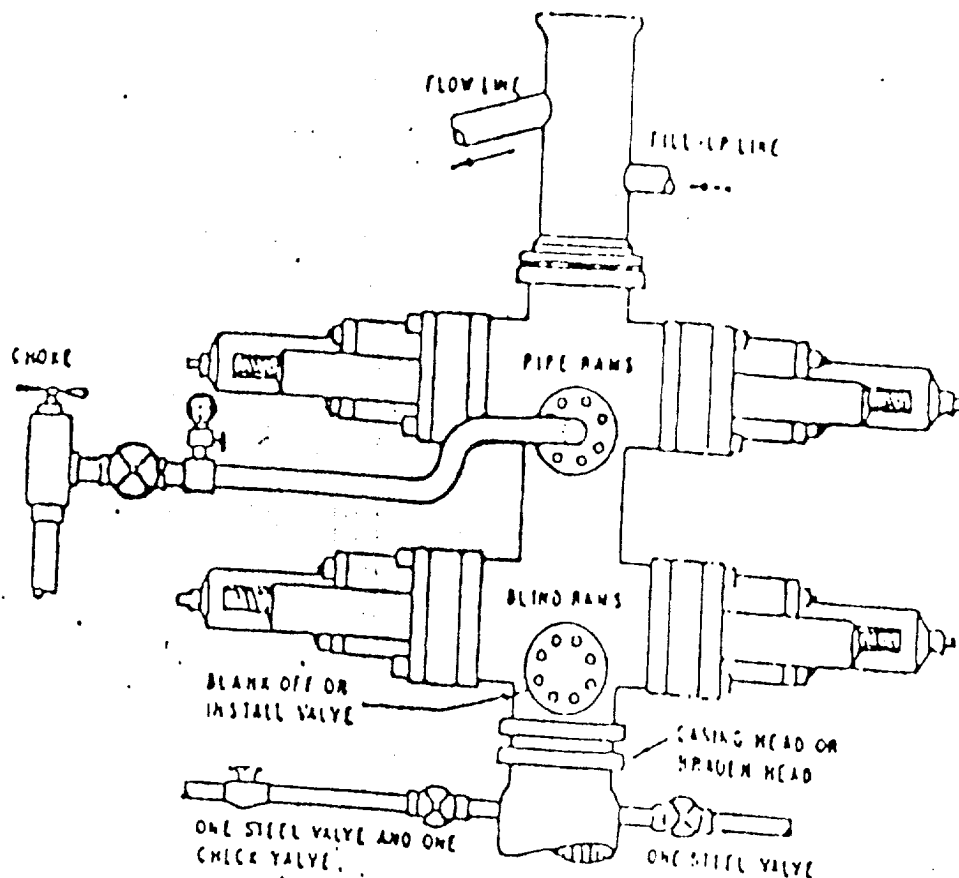
I hereby certify that the well location shown on this plat was plotted from field notes of actual surveys made by me or under my supervision, and that the same is true and correct to the best of my knowledge and belief.

Date Surveyed  
 12-24-80  
 Registered Professional Engineer and/or Land Surveyor

*John W. West*

Certificate No. **JOHN W. WEST 676**  
**PATRICK A. ROMERO 6803**  
**Ronald J. Eidson 3239**

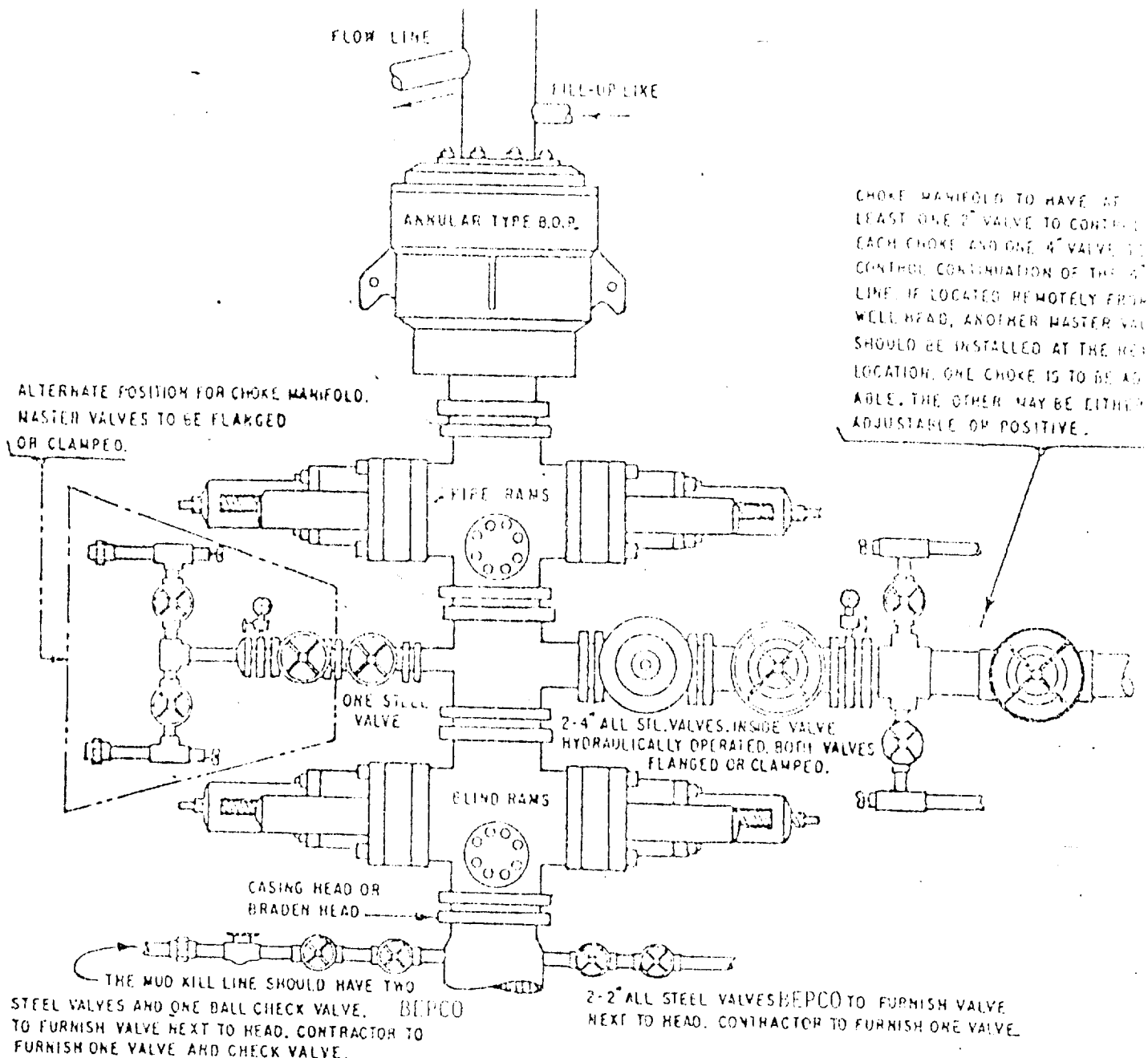




# THE FOLLOWING CONSTITUTE MINIMUM BLOWOUT PREVENTER REQUIREMENTS

- A. ONE DOUBLE GATE BLOWOUT PREVENTER WITH LOWER RAMS BLIND AND UPPER RAMS FOR PIPE, ALL HYDRAULICALLY CONTROLLED, OPENING OR PREVENTERS BETWEEN RAMS.
- B. OPENING TO BE FLANGED, STUDDED OR CLAMPED AND AT LEAST TWO INCHES DIAMETER.
- C. ALL CONNECTIONS FROM OPERATING MANIFOLD TO PREVENTERS TO BE ALL STEEL HOSE OR TUBE A MINIMUM OF ONE INCH IN DIAMETER.
- D. THE AVAILABLE CLOSING PRESSURE SHALL BE AT LEAST 15% IN EXCESS OF THAT REQUIRED WITH SUFFICIENT VOLUME TO OPERATE THE PREVENTERS.
- E. ALL CONNECTIONS TO AND FROM PREVENTERS TO HAVE A PRESSURE RATING EQUIVALENT TO THAT OF THE B.O.P.
- F. MANUAL CONTROLS TO BE INSTALLED BEFORE DRILLING CEMENT PLUG.
- G. VALVE TO CONTROL FLOW THROUGH DRILL PIPE TO BE LOCATED AT RIG FLOOR.
- H. CHOKE MAY BE EITHER POSITIVE OR ADJUSTABLE. choke spool may be used between rams.

REPCO II  
 ONE HYDRAULIC DUAL BLOWOUT PREVENTER  
 1000# WP  
 1000# TEST PRESSURE



### THE FOLLOWING CONSTITUTE MINIMUM BLOWOUT PREVENTER REQUIREMENTS

- CONDITIONS MAY BE MET BY AN ANNULAR TYPE BLOWOUT PREVENTER ON TOP AND A CHOKER SPOOL BELOW AND EITHER
  - TWO RAM TYPE BLOWOUT PREVENTERS BELOW THE SPOOL, THE LOWER UNIT CONTAINING BLIND RAMS AND THE UPPER UNIT CONTAINING PIPE RAMS, OR
  - A DUAL BLOWOUT PREVENTER BELOW THE SPOOL WITH BLIND RAMS ON BOTTOM AND PIPE RAMS ON TOP.
- OPENING ON CHOKER SPOOL TO BE FLANGED, STUDDED OR CLAMPED.
- ALL CONNECTIONS FROM OPERATING MANIFOLDS TO PREVENTERS TO BE ALL STEEL HOSE OR TUBE A MINIMUM OF ONE INCH IN DIAMETER.
- THE AVAILABLE CLOSING PRESSURE SHALL BE AT LEAST 15% IN EXCESS OF THAT REQUIRED WITH SUFFICIENT VOLUME TO OPERATE THE PREVENTER.
- ALL CONNECTIONS TO AND FROM PREVENTER TO HAVE A PRESSURE RATING EQUIVALENT TO THAT OF THE B.O.P.'S.
- MANUAL CONTROLS TO BE INSTALLED BEFORE DRILLING CEMENT PLUG.
- KELLY COCK TO BE INSTALLED ON KELLY.
- INSIDE BLOWOUT PREVENTER TO BE AVAILABLE ON RIG FLOOR.
- DUAL OPERATING CONTROLS ONE LOCATED BY DRILLERS POSITION AND THE OTHER LOCATED A SAFE DISTANCE FROM THE RIG FLOOR.

BEPCO IV  
 THREE CLOSURE HYDRAULIC BLOWOUT PREVENTERS  
 3000# WP  
 3000# TEST PRESSURE