

NO. OF COPIES RECEIVED		
DISTRIBUTION		
SANTA FE		
FILE		
U.S.G.S.		
LAND OFFICE		
OPERATOR		

NEW MEXICO OIL CONSERVATION COMMISSION

Form C-101
Revised 1-1-65

5A. Indicate Type of Lease	
STATE <input type="checkbox"/>	FEE <input checked="" type="checkbox"/>
5. State Oil & Gas Lease No.	
2135 9A	

APPLICATION FOR PERMIT TO DRILL, DEEPEN, OR PLUG BACK

1a. Type of Work		7. Unit Agreement Name	
b. Type of Well		8. Farm or Lease Name	
DRILL <input checked="" type="checkbox"/> DEEPEN <input type="checkbox"/> PLUG BACK <input type="checkbox"/>		Montieth	
OIL WELL <input checked="" type="checkbox"/> GAS WELL <input type="checkbox"/> OTHER <input type="checkbox"/>		9. Well No.	
2. Name of Operator		10. Field and Section of Lease	
Bass Enterprises Production Co.		UNDESIGNATED	
3. Address of Operator		N. E. Lovington Penn	
P.O. Box 2760, Midland, Texas 79702			
4. Location of Well		12. County	
UNIT LETTER F LOCATED 1980 FEET FROM THE North LINE		Lea	
AND 2130 FEET FROM THE West LINE OF SEC. 13 TWP. 16S RGE. 36E NMPM			
		19. Proposed Depth	
		11,900'	
		19A. Formation	
		Strawn	
		20. Rotary or C.T.	
		Rotary	
21. Elevations (Show whether DF, RT, etc.)		21B. Drilling Contractor	
3859.9 GL		Unknown	
21A. Kind & Status Plug. Bond		22. Approx. Date Work will start	
Blanket Single Well		Upon Approval	

23. PROPOSED CASING AND CEMENT PROGRAM

SIZE OF HOLE	SIZE OF CASING	WEIGHT PER FOOT	SETTING DEPTH	SACKS OF CEMENT	EST. TOP
15"	11 3/4"	42#	360'	500 sx	surface
11"	8 5/8"	24#	4925'	1200 sx	surface
7 7/8"	5 1/2"	17#	TD	1000 sx	7000'

BOP diagrams attached BEPCO II and BEPCO IV

APPROVAL VALID
FOR 90 DAYS UNLESS
DRILLING COMMENCED,

EXPIRES 4/12/81

IN ABOVE SPACE DESCRIBE PROPOSED PROGRAM: IF PROPOSAL IS TO DEEPEN OR PLUG BACK, GIVE DATA ON PRESENT PRODUCTIVE ZONE AND PROPOSED NEW PRODUCTIVE ZONE. GIVE BLOWOUT PREVENTER PROGRAM, IF ANY.

I hereby certify that the information above is true and complete to the best of my knowledge and belief.

Signed Stephen Smith Title Engineering Assistant Date December 31, 1980

(This space for State Use)

APPROVED BY [Signature] TITLE SUPERVISOR DISTRICT I DATE JAN 12 1981

CONDITIONS OF APPROVAL, IF ANY:

N MEXICO OIL CONSERVATION COMMISS
WELL LOCATION AND ACREAGE DEDICATION PLAT

Form C-102
 Supersedes C-128
 Effective 1-1-65

All distances must be from the outer boundaries of the Section.

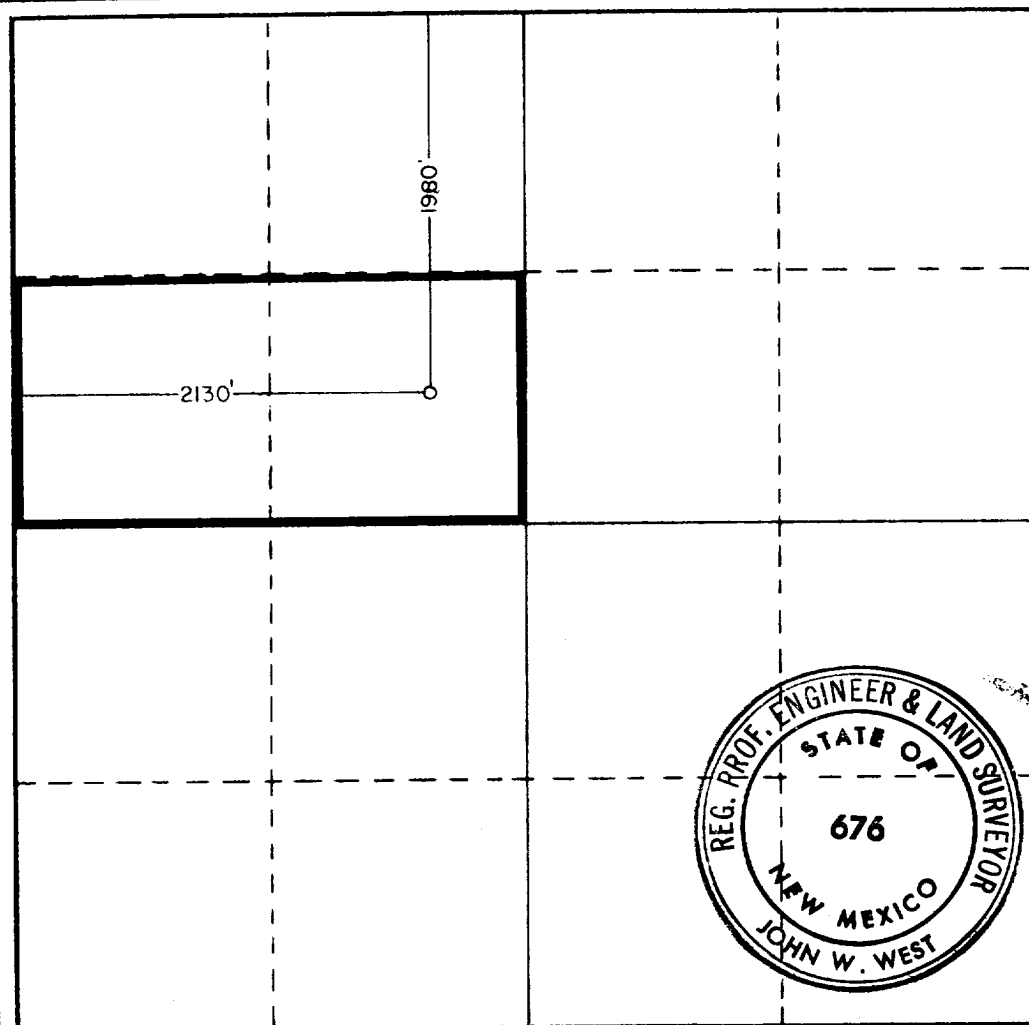
Operator Bass Enterprise Production Co. Montieth				Lease 5	
Unit Letter F	Section 13	Township 16 South	Range 36 East	County Lea	
Actual Footage Location of Well: 1980 feet from the North line and 2130 feet from the West line					
Ground Level Elev. 3855.9	Producing Formation Strawn	Pool N. E. Lovington Penn		Dedicated Acreage: 80 Acres	

1. Outline the acreage dedicated to the subject well by colored pencil or hachure marks on the plat below.
2. If more than one lease is dedicated to the well, outline each and identify the ownership thereof (both as to working interest and royalty).
3. If more than one lease of different ownership is dedicated to the well, have the interests of all owners been consolidated by communitization, unitization, force-pooling, etc?

☐ Yes ☐ No If answer is "yes," type of consolidation _____

If answer is "no," list the owners and tract descriptions which have actually been consolidated. (Use reverse side of this form if necessary.) _____

No allowable will be assigned to the well until all interests have been consolidated (by communitization, unitization, forced-pooling, or otherwise) or until a non-standard unit, eliminating such interests, has been approved by the Commission.



CERTIFICATION

I hereby certify that the information contained herein is true and complete to the best of my knowledge and belief.

Stephen Smith

Name
Stephen Smith
 Position
Engineering Assistant

Company
Bass Enterprises Prod. Co.

Date
December 31, 1980

I hereby certify that the well location shown on this plat was plotted from field notes of actual surveys made by me or under my supervision, and that the same is true and correct to the best of my knowledge and belief

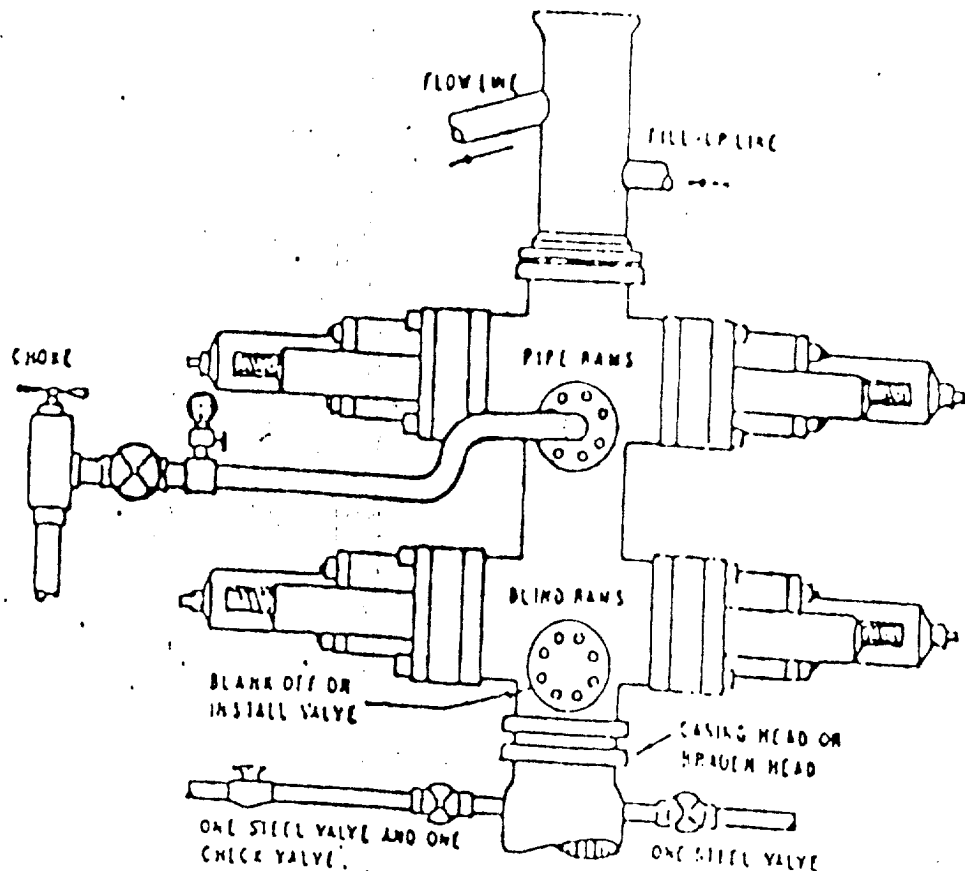
Date Surveyed
12-24-80

Registered Professional Engineer and/or Land Surveyor

John W. West

Certificate No **JOHN W. WEST 676**
PATRICK A. ROMERO 6663
Ronald J. Eidson 3239

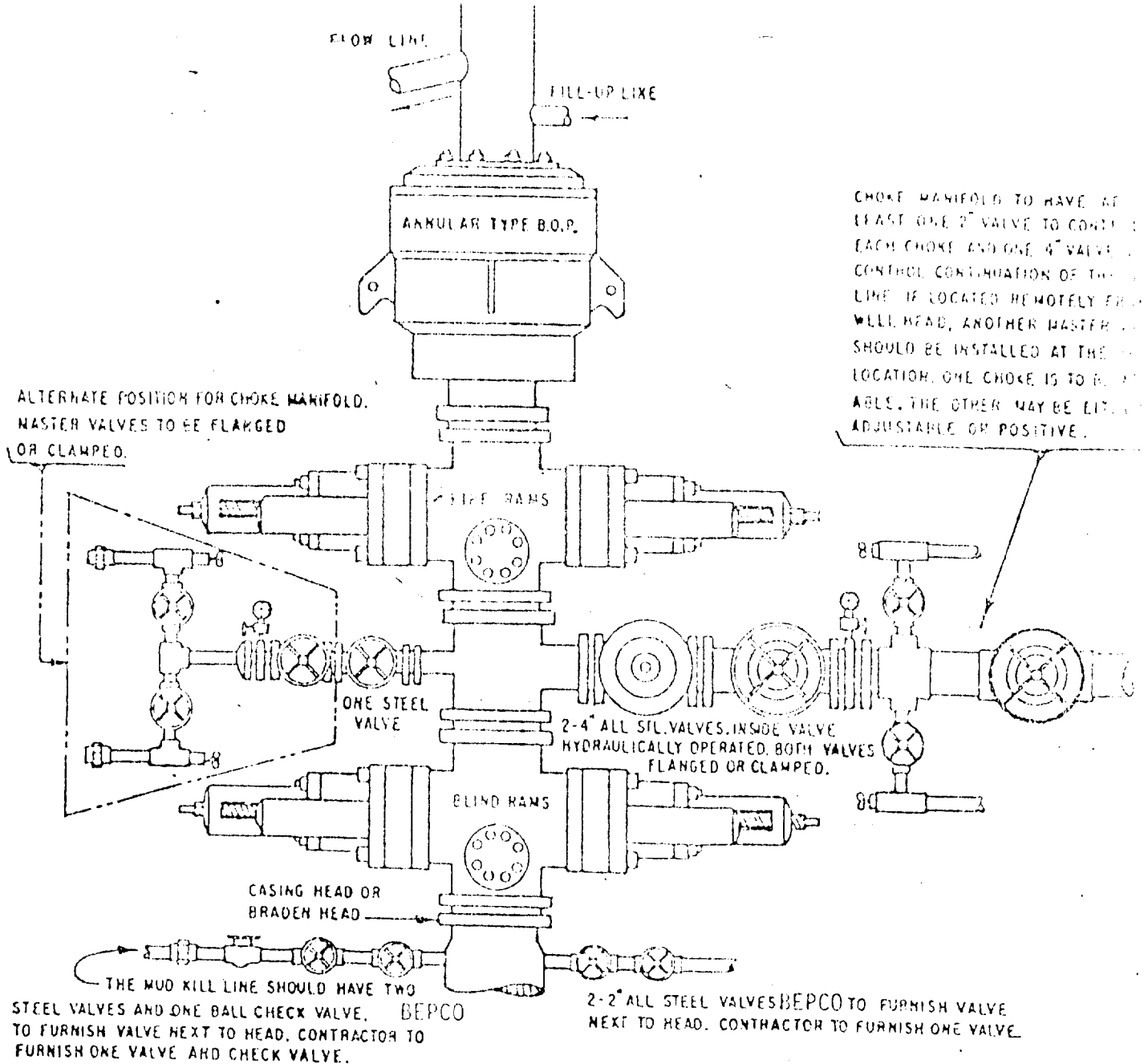
0 330 660 990 1320 1650 1980 2310 2640 2970 3300 3630 3960 4290 4620 4950 5280 5610 5940 6270 6600 6930 7260 7590 7920 8250 8580 8910 9240 9570 9900



THE FOLLOWING CONSTITUTE MINIMUM BLOWOUT PREVENTER REQUIREMENTS

- A. ONE DOUBLE GATE BLOWOUT PREVENTER WITH LOWER RAMS BLIND AND UPPER RAMS FOR PIPE, ALL HYDRAULICALLY CONTROLLED, OPENING OR PREVENTERS BETWEEN RAMS.
- B. OPENING TO BE FLANGED, STUDDED OR CLAMPED AND AT LEAST TWO INCHES DIAMETER.
- C. ALL CONNECTIONS FROM OPERATING MANIFOLD TO PREVENTERS TO BE ALL STEEL HOSE OR TUBE A MINIMUM OF ONE INCH IN DIAMETER.
- D. THE AVAILABLE CLOSING PRESSURE SHALL BE AT LEAST 15% IN EXCESS OF THAT REQUIRED WITH SUFFICIENT VOLUME TO OPERATE THE PREVENTERS.
- E. ALL CONNECTIONS TO AND FROM PREVENTERS TO HAVE A PRESSURE RATING EQUIVALENT TO THAT OF THE B.O.P.
- F. MANUAL CONTROLS TO BE INSTALLED BEFORE DRILLING CEMENT PLUG.
- G. VALVE TO CONTROL FLOW THROUGH DRILL PIPE TO BE LOCATED AT RIG FLOOR.
- H. CHOKE MAY BE EITHER POSITIVE OR ADJUSTABLE. choke spool may be used between rams.

REPCO II
 ONE HYDRAULIC DUAL BLOWOUT PREVENTER
 1000# WP
 1000# TEST PRESSURE



THE FOLLOWING CONSTITUTE MINIMUM BLOWOUT PREVENTER REQUIREMENTS

- A. CONDITIONS MAY BE MET BY AN ANNULAR TYPE BLOWOUT PREVENTER ON TOP AND A CHOKE SPOOL BELOW AND EITHER
 - (1) TWO RAM TYPE BLOWOUT PREVENTERS BELOW THE SPOOL, THE LOWER UNIT CONTAINING BLIND RAMS AND THE UPPER UNIT CONTAINING PIPE RAMS, OR
 - (2) A DUAL BLOWOUT PREVENTER BELOW THE SPOOL WITH BLIND RAMS ON BOTTOM AND PIPE RAMS ON TOP.
- B. OPENING ON CHOKE SPOOL TO BE FLANGED, STUDDED OR CLAMPED.
- C. ALL CONNECTIONS FROM OPERATING MANIFOLDS TO PREVENTERS TO BE ALL STEEL HOSE OR TUBE A MINIMUM OF ONE INCH IN DIAMETER.
- D. THE AVAILABLE CLOSING PRESSURE SHALL BE AT LEAST 15% IN EXCESS OF THAT REQUIRED WITH SUFFICIENT VOLUME TO OPERATE THE B.O.P.'S.
- E. ALL CONNECTIONS TO AND FROM PREVENTER TO HAVE A PRESSURE RATING EQUIVALENT TO THAT OF THE B.O.P.'S.
- F. MANUAL CONTROLS TO BE INSTALLED BEFORE DRILLING CEMENT PLUG.
- G. KELLY COCK TO BE INSTALLED ON KELLY.
- H. INSIDE BLOWOUT PREVENTER TO BE AVAILABLE ON RIG FLOOR.
- I. DUAL OPERATING CONTROLS ONE LOCATED BY DRILLERS POSITION AND THE OTHER LOCATED A SAFE DISTANCE FROM THE RIG FLOOR.

BOPCO IV
THREE CLOSURE HYDRAULIC BLOWOUT PREVENTERS

3000#WP

3000# TEST Pressure