

NO. OF COPIES RECEIVED	
DISTRIBUTION	
SANTA FE	
FILE	
U.S.G.S.	
LAND OFFICE	
OPERATOR	

NEW MEXICO OIL CONSERVATION COMMISSION

Form C-101
Revised 1-1-65

5A. Indicate Type of Lease	
STATE <input checked="" type="checkbox"/>	FEE <input type="checkbox"/>
5. State Oil & Gas Lease No.	

APPLICATION FOR PERMIT TO DRILL, DEEPEN, OR PLUG BACK

1a. Type of Work		7. Unit Agreement Name	
b. Type of Well OIL WELL <input checked="" type="checkbox"/> GAS WELL <input type="checkbox"/> OTHER <input type="checkbox"/>		8. Farm or Lease Name State NM '11'	
2. Name of Operator Santa Fe Energy Company		9. Well No. 1	
3. Address of Operator 7200 I-40 West, Amarillo, TX 79106		10. Field and Pool, or Wildcat Tulch-Devonian Pool	
4. Location of Well UNIT LETTER D LOCATED 660' FEET FROM THE North LINE AND 660' FEET FROM THE West LINE OF SEC. 11 TWP. 15S RGE. 32E NMPM		12. County Lea	
19. Proposed Depth 13,600'		19A. Formation Devonian	
20. Rotary or C.T. Rotary		21. Elevations (Show whether DF, RT, etc.) 4284' GL	
21A. Kind & Status Plug. Bond Blanket/current		21B. Drilling Contractor Landis Drilling Co.	
22. Approx. Date Work will start April 1, 1981			

23. PROPOSED CASING AND CEMENT PROGRAM

SIZE OF HOLE	SIZE OF CASING	WEIGHT PER FOOT	SETTING DEPTH	SACKS OF CEMENT	EST. TOP
17 1/2"	13 3/8"	54.5#	400'	450 sx	Circ
12 1/4"	9 5/8"	40.5#	4400'	Est.950 sx	300' from surf.
7 7/8"	5 1/2"	17#	Est.13,500'	Est.900 sx	Est. 9000'

1. Drill a 17 1/2" hole to 400' and set 13 3/8" casing, circulating cement to the surface. WOC 10-12 hours. Nipple up BOPs and test to full working pressure.
2. Drill a 12 1/4" hole to 4400'. Run and cement 9 5/8" casing. Estimated cement top of 300' from ground level. NU BOPs and pressure test to full working pressure.
3. Drill a 7 7/8" hole to TD with sufficient mud weight to control formation pressures.
4. Either run and cement 5 1/2" production casing or plug and abandon as directed by the New Mexico Oil Conservation Commission.

APPROVED BY *[Signature]* DATE 2/19/81
SUPERVISOR DISTRICT 4

IN ABOVE SPACE DESCRIBE PROPOSED PROGRAM: IF PROPOSAL IS TO DEEPEN OR PLUG BACK, GIVE DATA ON PRESENT PRODUCTIVE ZONE AND PROPOSED NEW PRODUCTIVE ZONE. GIVE BLOWOUT PREVENTER PROGRAM, IF ANY.

I hereby certify that the information above is true and complete to the best of my knowledge and belief.

Signed *[Signature]* Title Drilling Engineer Date January 13, 1981
(This space for State Use)

APPROVED BY *[Signature]* TITLE SUPERVISOR DISTRICT 4 DATE
CONDITIONS OF APPROVAL, IF ANY:

**NEW MEXICO OIL CONSERVATION COMMISSION
WELL LOCATION AND ACREAGE DEDICATION PLAT**

Form C-102
Supersedes C-128
Effective 1-1-65

All distances must be from the outer boundaries of the Section.

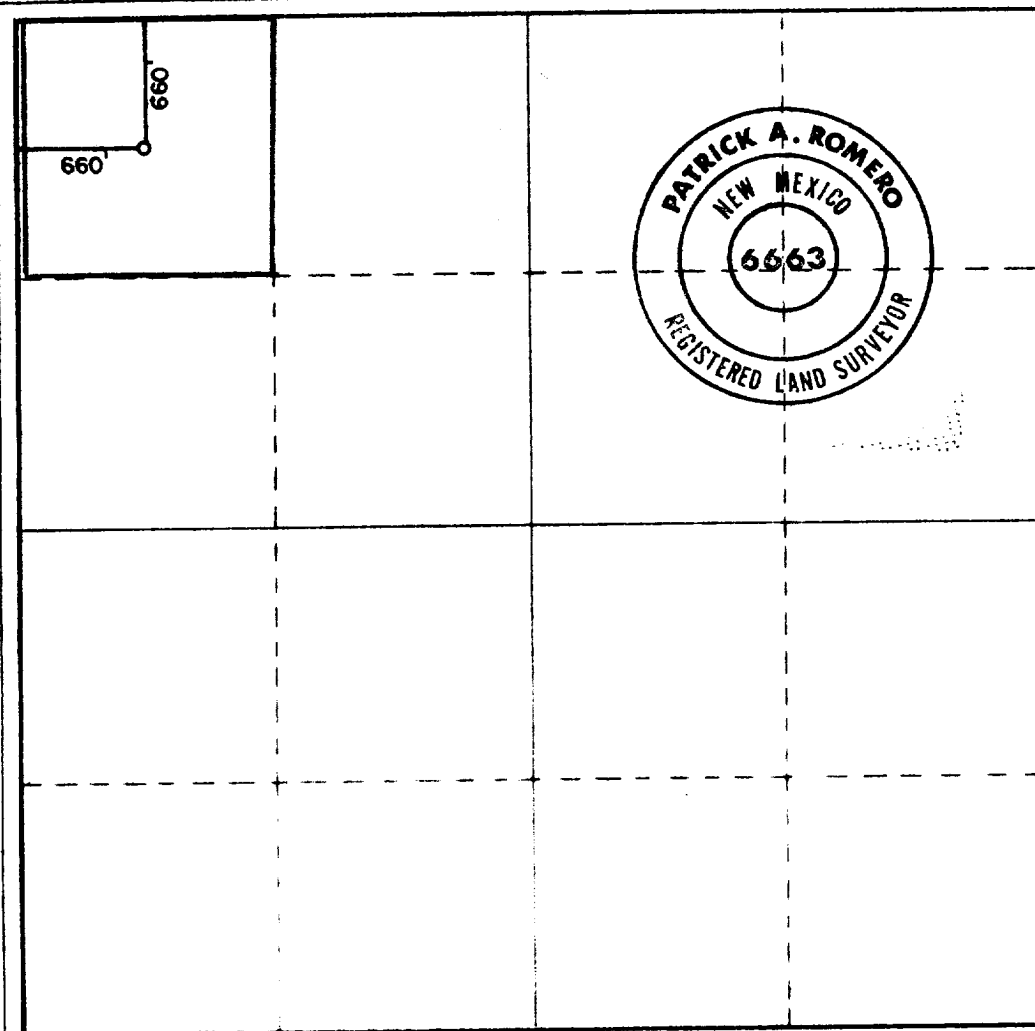
Operator Santa Fe Energy Co.			Lease State N.M. 11		Well No. 1
Unit Letter D	Section 11	Township 15 South	Range 32 East	County Lea County, New Mexico	
Actual Footage Location of Well: 660 feet from the North line and 660 feet from the West line					
Ground Level Elev. 4283.6	Producing Formation Devonian		Pool Tulk-Devonian		Dedicated Acreage: 40 Acres

1. Outline the acreage dedicated to the subject well by colored pencil or hatchure marks on the plat below.
2. If more than one lease is dedicated to the well, outline each and identify the ownership thereof (both as to working interest and royalty).
3. If more than one lease of different ownership is dedicated to the well, have the interests of all owners been consolidated by communitization, unitization, force-pooling, etc?

☐ Yes ☐ No If answer is "yes," type of consolidation _____

If answer is "no," list the owners and tract descriptions which have actually been consolidated. (Use reverse side of this form if necessary.) _____

No allowable will be assigned to the well until all interests have been consolidated (by communitization, unitization, forced-pooling, or otherwise) or until a non-standard unit, eliminating such interests, has been approved by the Commission.



CERTIFICATION

I hereby certify that the information contained herein is true and complete to the best of my knowledge and belief.

Sammy N. Morgan
Name

Sammy N. Morgan

Position

Drilling Engineer

Company

Santa Fe Energy Company

Date

January 13, 1981

I hereby certify that the well location shown on this plat was plotted from field notes of actual surveys made by me or under my supervision, and that the same is true and correct to the best of my knowledge and belief.

Date Surveyed

1-6-81

Registered Professional Engineer and/or Land Surveyor

Patrick A. Romero

Certificate No. **JOHN W. WEST 676**
PATRICK A. ROMERO 6663
Ronald J. Eidson 3239