

UNITED STATES
DEPARTMENT OF THE INTERIOR
GEOLOGICAL SURVEY

APPLICATION FOR PERMIT TO DRILL, DEEPEN, OR PLUG BACK

1a. TYPE OF WORK

DRILL ☒DEEPEN ☐PLUG BACK ☐

b. TYPE OF WELL

OIL
WELL ☒GAS
WELL ☐

OTHER

SINGLE
ZONE ☒MULTIPLE
ZONE ☐

2. NAME OF OPERATOR

PETROLEUM DEVELOPMENT CORPORATION

3. ADDRESS OF OPERATOR

9720-B Candelaria, N.E., Albuquerque, New Mexico, 87112

4. LOCATION OF WELL (Report location clearly and in accordance with any State requirements.)

At surface

2310' FSL, 660' FEL

At proposed prod. zone

Same

14. DISTANCE IN MILES AND DIRECTION FROM NEAREST TOWN OR POST OFFICE*

13 miles south of Maljamar, N.M.

10. DISTANCE FROM PROPOSED*

LOCATION TO NEAREST
PROPERTY OR LEASE LINE, FT.
(Also to nearest drlg. unit line, if any) 660'

16. NO. OF ACRES IN LEASE

240 HOBBS,
NEW MEXICO17. NO. OF ACRES ASSIGNED
TO THIS WELL

40

18. DISTANCE FROM PROPOSED LOCATION*

TO NEAREST WELL, DRILLING, COMPLETED,
OR APPLIED FOR, ON THIS LEASE, FT. 330'

19. PROPOSED DEPTH

10,000'

20. ROTARY OR CABLE TOOLS

Rotary

21. ELEVATIONS (Show whether DF, RT, GR, etc.)

3,657 GR

22. APPROX. DATE WORK WILL START*

April 10, 1981

23.

PROPOSED CASING AND CEMENTING PROGRAM

SIZE OF HOLE	SIZE OF CASING	WEIGHT PER FOOT	SETTING DEPTH	QUANTITY OF CEMENT
17 1/2"	13-3/8"	48#	400'	450 sx.
11"	8-5/8"	24#	4,000'	1,250 sx. (two stage)
7-7/8"	4 1/2"	11.6#	10,000'	700 sx.

Set 13-3/8" casing at approximately 400'; circulate cement to surface. Wait on cement 8 hrs. Test BOP and surface casing to 500# for 30 min. before drilling out. Drill 11" hole to approx. 4,000'; set and cement 8-5/8" intermediate casing. Wait on cement for 12 hrs. Test 8-5/8" casing and BOP to 2,000#.

Drill 7-7/8" hole to 10,000', testing all significant shows of oil or gas. Set 4 1/2" casing at approx. 10,000'. See attached mud program. Complete by jet perforating indicated pay intervals and acidizing or fracturing as need is indicated.

A 1500-Series BOP and hydrill with remote controls will be used. See attached preventer layout, Exhibit "D". See attached supplemental multi-point drilling plan; and mud program, Exhibit "E".

IN ABOVE SPACE DESCRIBE PROPOSED PROGRAM: If proposal is to deepen or plug back, give data on present productive zone and proposed new productive zone. If proposal is to drill or deepen directionally, give pertinent data on subsurface locations and measured and true vertical depths. Give blowout preventer program, if any.

24.

SIGNED

J. C. Johnson

TITLE President

DATE March 18, 1981

(This space for Federal or State office use)

PERMIT NO.

ONE 841 GEORGE H. STEWART

APPROVAL DATE

APPROVED BY

CONDITIONS OF APPROVAL, IF ANY:

JAMES A. GILLHAM
DISTRICT SUPERVISOR

TITLE

DATE

*See Instructions On Reverse Side

**NEW MEXICO OIL CONSERVATION COMMISSION
WELL LOCATION AND ACREAGE DEDICATION PLAT**

Form C-102
Supersedes C-128
Effective 1-1-65

All distances must be from the outer boundaries of the Section

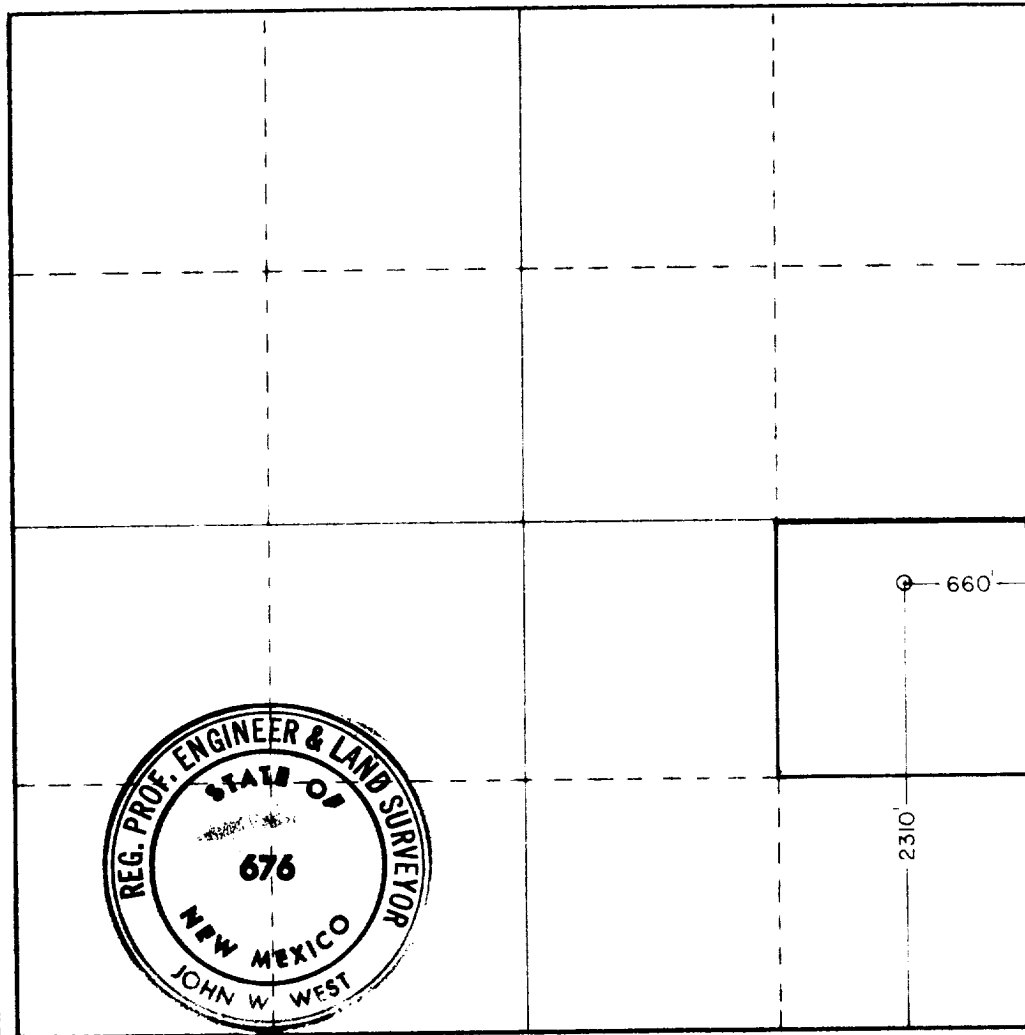
Operator Petroleum Development Corp.			Lease Jim's Favorite Federal		Well No. 1
Unit Letter I	Section 5	Township 19South	Range 32East	County Lea	
Actual Footage Location of Well: <div style="display: flex; justify-content: space-between;"> 2310 feet from the South line and 660 feet from the East line </div>					
Ground Level Elev. 3657.2'	Producing Formation Bone Spring Sand	Pool Undes.	Dedicated Acreage: 40 Acres		

1. Outline the acreage dedicated to the subject well by colored pencil or hachure marks on the plat below.
2. If more than one lease is dedicated to the well, outline each and identify the ownership thereof (both as to working interest and royalty).
3. If more than one lease of different ownership is dedicated to the well, have the interests of all owners been consolidated by communitization, unitization, force-pooling, etc?

☐ Yes ☐ No If answer is "yes," type of consolidation _____

If answer is "no," list the owners and tract descriptions which have actually been consolidated. (Use reverse side of this form if necessary.) _____

No allowable will be assigned to the well until all interests have been consolidated (by communitization, unitization, forced-pooling, or otherwise) or until a non-standard unit, eliminating such interests, has been approved by the Commission.



CERTIFICATION

I hereby certify that the information contained herein is true and complete to the best of my knowledge and belief.

J. C. Johnson

J. C. JOHNSON

President

PETROLEUM DEVELOPMENT CORP.

March 17, 1981

I hereby certify that the well location shown on this plat was plotted from field notes of actual surveys made by me or under my supervision, and that the same is true and correct to the best of my knowledge and belief.

Date Surveyed
Mar. 10, 1981

Registered Professional Engineer and Land Surveyor

John W. West
 Certificate No **JOHN W. WEST 676**
PATRICK A. ROMERO 6863
Ronald J. Eidson 3239

0 330 660 990 1320 1650 1980 2310 2640 2970 3300 3630 3960 4290 4620 4950 5280 5610 5940 6270 6600