

UNITED STATES  
DEPARTMENT OF THE INTERIOR  
GEOLOGICAL SURVEY

## APPLICATION FOR PERMIT TO DRILL, DEEPEN, OR PLUG BACK

## 1a. TYPE OF WORK

DRILL ☒DEEPEN ☐PLUG BACK ☐

## b. TYPE OF WELL

OIL  
WELL ☒GAS  
WELL ☐OTHER ☐SINGLE  
ZONE ☒MULTIPLE  
ZONE ☐

## 2. NAME OF OPERATOR

CONOCO INC.

## 3. ADDRESS OF OPERATOR

P. O. Box 460, Hobbs, N.M. 88240

## 4. LOCATION OF WELL (Report location clearly and in accordance with any State requirements.)\*

At surface

1810' FNL &amp; 1905' FWL

At proposed prod. zone

## 14. DISTANCE IN MILES AND DIRECTION FROM NEAREST TOWN OR POST OFFICE\*

## 10. DISTANCE FROM PROPOSED\*

LOCATION TO NEAREST  
PROPERTY OR LEASE LINE, FT.  
(Also to nearest drlg. unit line, if any)

## 18. DISTANCE FROM PROPOSED LOCATION\*

TO NEAREST WELL, DRILLING, COMPLETED,  
OR APPLIED FOR, ON THIS LEASE, FT.

## 21. ELEVATIONS (Show whether DF, RT, GR, etc.)

3530 GR (est.)

## 23.

## PROPOSED CASING AND CEMENTING PROGRAM

SIZE OF HOLE	SIZE OF CASING	WEIGHT PER FOOT	SETTING DEPTH	QUANTITY OF CEMENT
17 1/2"	13 3/8"	54.5 #	1300'	1806sx circulate
★ 12 1/4"	8 5/8"	32 #	2700'	2057sx circulate
7 7/8"	5 1/2"	15.5 #	7030'	1603 sx.

It is proposed to drill a straight hole to a TD of 7030' and complete it as a Weir Drinkard oil well.

See attachments for 10-point well plan & 13-point Surface Use Plan.

★ Intermediate string will be run only if there are water flows.

IN ABOVE SPACE DESCRIBE PROPOSED PROGRAM: If proposal is to deepen or plug back, give data on present productive zone and proposed new productive zone. If proposal is to drill or deepen directionally, give pertinent data on subsurface locations and measured and true vertical depths. Give blowout preventer program, if any.

## 24.

SIGNED

*W. R. Butterfield*

TITLE

Administrative Supervisor

DATE

March 31, 1981

PERMIT NO.

APPROVAL DATE

APPROVED BY

APR 9 1981

TITLE

DATE

CONDITIONS OF APPROVAL, IF ANY:

JAMES A. GILLHAM  
DISTRICT SUPERVISOR

\*See Instructions On Reverse Side

NEW MEXICO OIL CONSERVATION COMMISSION  
WELL LOCATION AND ACREAGE DEDICATION PLAT

Form C-102  
Supersedes C-128  
Effective 1-1-65

All distances must be from the outer boundaries of the Section

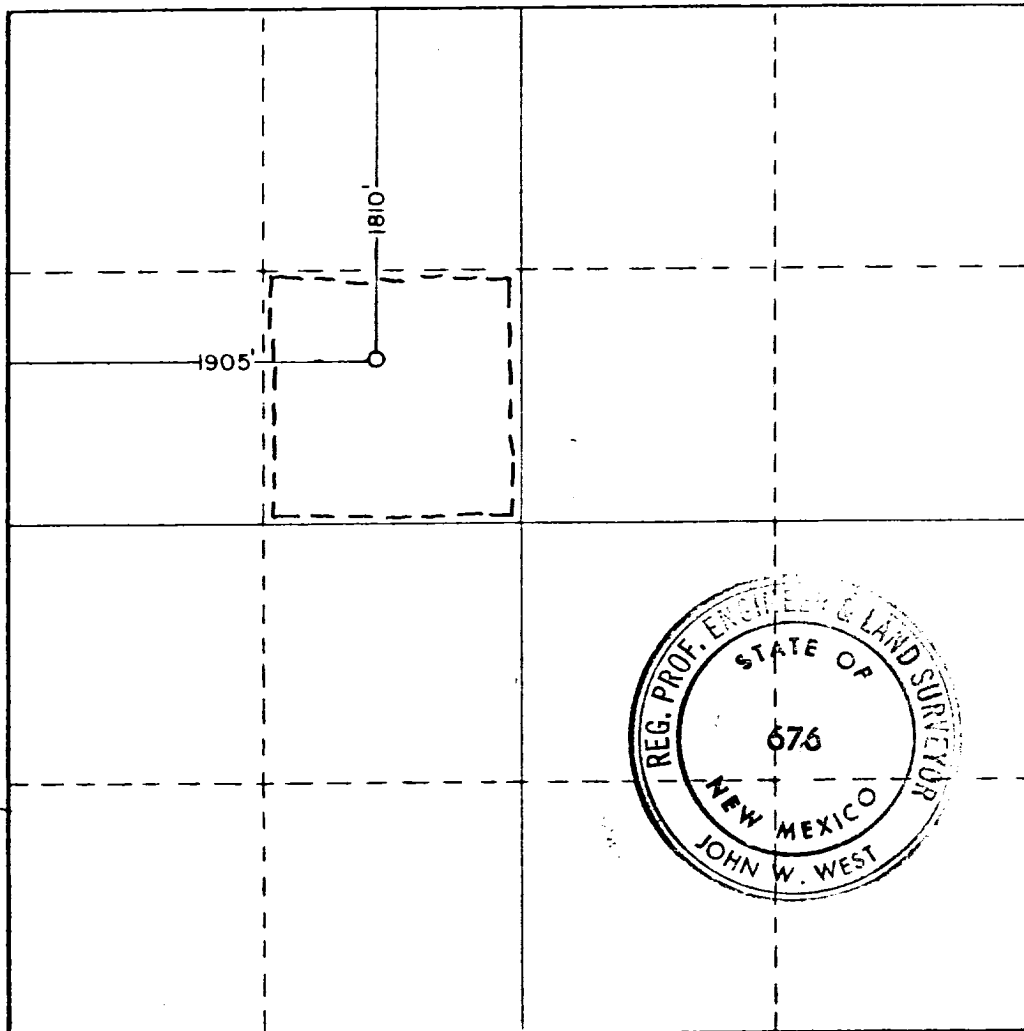
Operator <b>Conoco, Inc.</b>		Lease <b>SEMU Weir Drinkard</b>		Well No. <b>119</b>
Map Letter <b>F</b>	Section <b>23</b>	Township <b>20 South</b>	Range <b>37 East</b>	County <b>Lea</b>
Actual Footage Location of Well: <b>1810</b> feet from the <b>North</b> line and <b>1905</b> feet from the <b>West</b> line				
Ground Level Elev. <b>3530.3</b>	Producing Formation <b>Drinkard</b>	Pool <b>Weir Drinkard</b>	Dedicated Acreage: <b>40</b> Acres	

1. Outline the acreage dedicated to the subject well by colored pencil or hachure marks on the plat below.
2. If more than one lease is dedicated to the well, outline each and identify the ownership thereof (both as to working interest and royalty).
3. If more than one lease of different ownership is dedicated to the well, have the interests of all owners been consolidated by communitization, unitization, force-pooling, etc?

☐ Yes ☐ No If answer is "yes," type of consolidation \_\_\_\_\_

If answer is "no," list the owners and tract descriptions which have actually been consolidated. (Use reverse side of this form if necessary.) \_\_\_\_\_

No allowable will be assigned to the well until all interests have been consolidated (by communitization, unitization, forced-pooling, or otherwise) or until a non-standard unit, eliminating such interests, has been approved by the Commission.



CERTIFICATION

I hereby certify that the information contained herein is true and complete to the best of my knowledge and belief.

Name  
*W. A. Butterfield*  
Position  
*Administrative Supervisor*  
Company  
*Conoco Inc.*  
Date  
*March 31, 1981*

I hereby certify that the well location shown on this plat was plotted from field notes of actual surveys made by me or under my supervision, and that the same is true and correct to the best of my knowledge and belief.

Date Surveyed  
**3-18-81**

Registered Professional Engineer and/or Land Surveyor

*John W. West*

Certificate No. **JOHN W. WEST 676**  
**PATRICK A. ROMERO 6863**  
**Ronald J. Eidson 3239**

0 330 660 990 1320 1650 1980 2310 2640 2000 1500 1000 500 0