

STATE OF NEW MEXICO
ENERGY AND MINERALS DEPARTMENT

OIL CONSERVATION DIVISION
P. O. BOX 2088
SANTA FE, NEW MEXICO 87501

Form C-101
Revised 10-1-78

NO. OF COPIES RECEIVED	
DISTRIBUTION	
SANTA FE	
FILE	
U.S.G.S.	
LAND OFFICE	
OPERATOR	

5A. Indicate Type of Lease
STATE ☐ FEE ☒

5. State Oil & Gas Lease No.

APPLICATION FOR PERMIT TO DRILL, DEEPEN, OR PLUG BACK

a. Type of Work

DRILL ☒

DEEPEN ☐

PLUG BACK ☐

b. Type of Well

OIL WELL ☐

GAS WELL ☒

OTHER

SINGLE ZONE ☒

MULTIPLE ZONE ☐

c. Name of Operator

THE SUPERIOR OIL COMPANY

d. Address of Operator

P.O. Box 4500 The Woodlands, Texas 77380

e. Location of Well

UNIT LETTER X LOCATED 1980 FEET FROM THE South LINE

NO 1980' FEET FROM THE East LINE OF SEC. 7 TWP. 24S RGE. 34E NMPM

7. Unit Agreement Name

8. Farm or Lease Name

Sims Madera

9. Well No.

1

10. Field and Pool, or Wildcat

South Bell Lake

12. County

Lea

1. Elevations (show whether DF, KI, etc.)

3607.8

21A. Kind & Status Plug. Bond

Blanket

19. Proposed Depth

15,500'

19A. Formation

Morrow

20. Rotary or C.T.

Rotary

21B. Drilling Contractor

N/A

22. Approx. Date Work will start

October 1, 1981

PROPOSED CASING AND CEMENT PROGRAM

SIZE OF HOLE	SIZE OF CASING	WEIGHT PER FOOT	SETTING DEPTH	SACKS OF CEMENT	EST. TOP
36"	30"	108#	40'	Redi - Mix	Surface
26"	20"	94#	600'	1375	Surface
17-1/2"	13-3/8"	68#	5300'	3800	Surface
12-1/4"	9-5/8"	47#	12800'	650	9500'
8-1/2"	5"	23.2 #	15500'	600	Top of Liner

GAS NOT DEDICATED

APPROVAL VALID FOR 180 DAYS
PERMIT EXPIRES 11/18/81
UNLESS DRILLING UNDERWAY

ABOVE SPACE DESCRIBE PROPOSED PROGRAM: IF PROPOSAL IS TO DEEPEN OR PLUG BACK, GIVE DATA ON PRESENT PRODUCTIVE ZONE AND PROPOSED NEW PRODUCTION ZONE. GIVE FLOWOUT PREVENTER PROGRAM, IF ANY.

I hereby certify that the information above is true and complete to the best of my knowledge and belief.

Signed G. Bannantini G. Bannantini Title Regulatory Group Manager

Date May 6, 1981

(This space for State Use)

APPROVED BY [Signature] TITLE SUPERVISOR

DATE

CONDITIONS OF APPROVAL, IF ANY:

CC: NM (o+4), EAR, PRB, PFP, WHS, BJW, GLS, RG, CF, EJW,

**NEW MEXICO OIL CONSERVATION COMMISSION
WELL LOCATION AND ACREAGE DEDICATION PLAT**

Form C-102
Supersedes C-128
Effective 1-1-65

All distances must be from the outer boundaries of the Section.

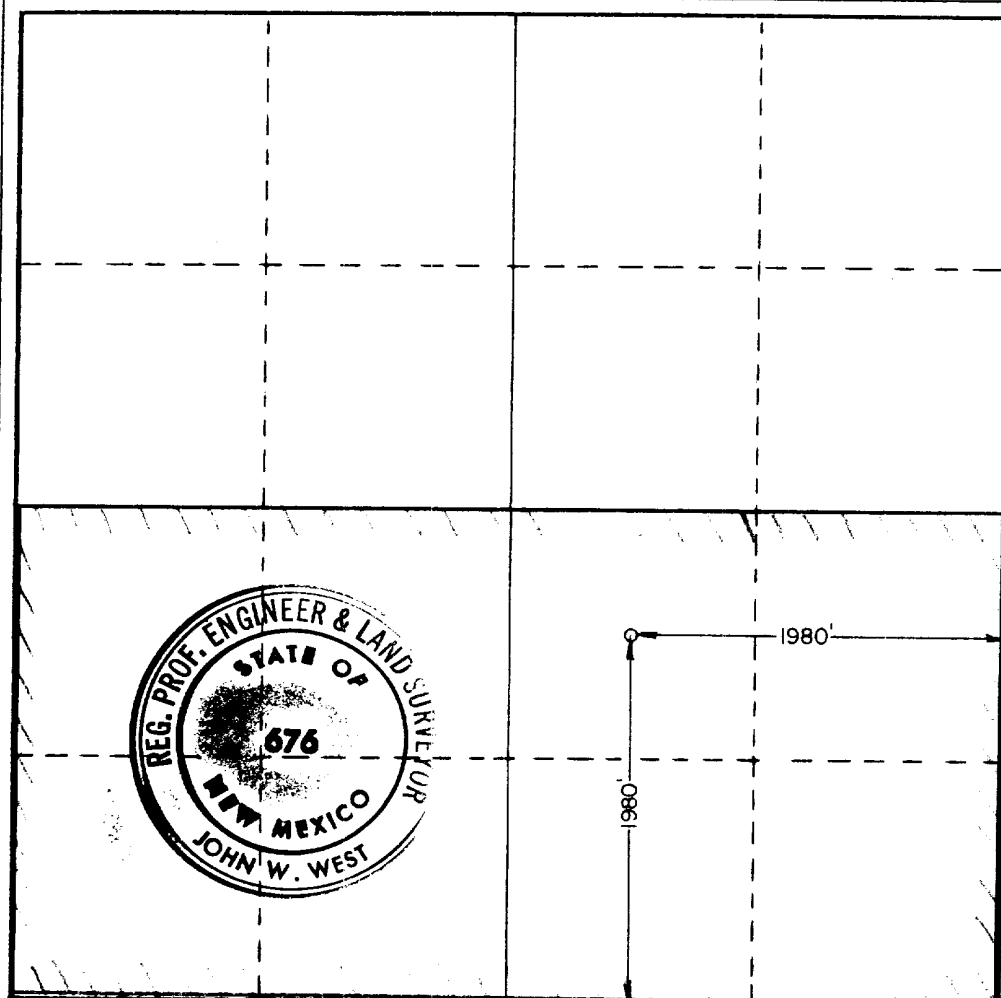
Operator The Superior Oil Co.			Lease Sims Madera		Well No. 1
Unit Letter 1	Section 7	Township 24 South	Range 34 East	County Lea	
Actual Footage Location of Well: 1980 feet from the south line and 1980 feet from the east line					
Ground Level Elev. 3607.8	Producing Formation Morrow		Pool Morrow	Dedicated Acreage: 320 Acres	

1. Outline the acreage dedicated to the subject well by colored pencil or hachure marks on the plat below.
2. If more than one lease is dedicated to the well, outline each and identify the ownership thereof (both as to working interest and royalty).
3. If more than one lease of different ownership is dedicated to the well, have the interests of all owners been consolidated by communitization, unitization, force-pooling, etc?

☒ Yes ☐ No If answer is "yes," type of consolidation voluntary pooling agreement

If answer is "no," list the owners and tract descriptions which have actually been consolidated. (Use reverse side of this form if necessary.) _____

No allowable will be assigned to the well until all interests have been consolidated (by communitization, unitization, forced-pooling, or otherwise) or until a non-standard unit, eliminating such interests, has been approved by the Commission.



CERTIFICATION

I hereby certify that the information contained herein is true and complete to the best of my knowledge and belief.

G. Bannantine

Name

G. Bannantine

Position

Regulatory Group Manager

Company

THE SUPERIOR OIL COMPANY

Date

May 6, 1981

I hereby certify that the well location shown on this plat was plotted from field notes of actual surveys made by me or under my supervision, and that the same is true and correct to the best of my knowledge and belief.

Date Surveyed

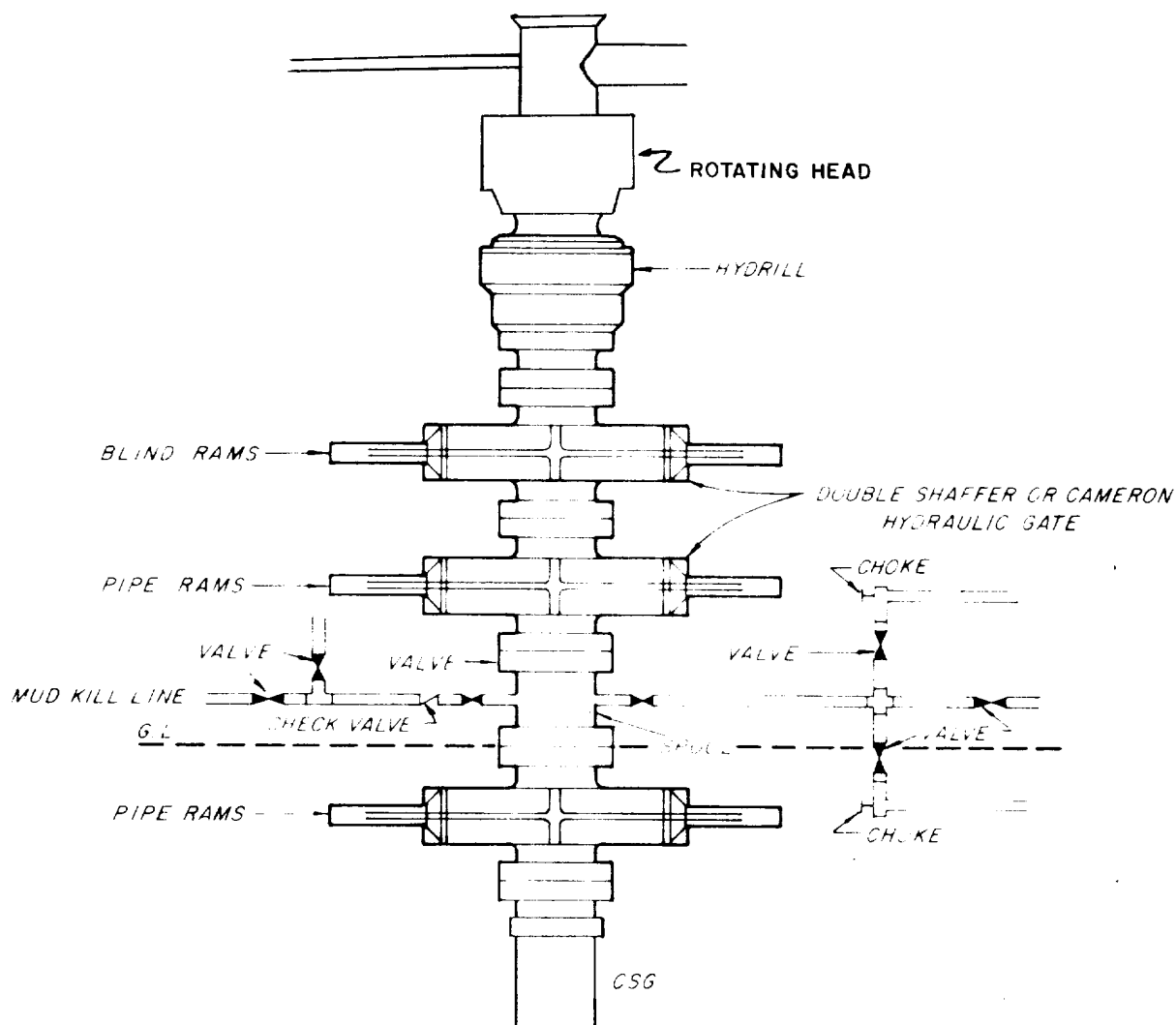
4-25-81

Registered Professional Engineer and/or Land Surveyor

John W. West

Certificate No. **JOHN W. WEST 676**
PATRICK A. ROMERO 6463
Ronald J. Eidson 3239

0 320 640 960 1280 1600 1920 2240 2560 2880 3200 3520 3840 4160 4480 4800 5120 5440 5760 6080 6400



API SERIES 1500

NOTE:

Manual and Hydraulic controls with closing unit no less than 75' from well head.
Remote controls on rig floor.

THE SUPERIOR OIL CO.
WESTERN DIVISION



BLOW-OUT PREVENTER
SPECIFICATIONS