

N.M.O.C.D. COPY  
UNITED STATES  
DEPARTMENT OF THE INTERIOR  
GEOLOGICAL SURVEYSUBMIT IN TRIPLICATE\*  
(Other Instructions on  
reverse sl.)Form approved.  
Budget Bureau No. 42-R1425.

30-025-27594

## APPLICATION FOR PERMIT TO DRILL, DEEPEN, OR PLUG BACK

## 1a. TYPE OF WORK

DRILL ☒DEEPEN ☐PLUG BACK ☐

## b. TYPE OF WELL

OIL  
WELL ☒GAS  
WELL ☐

OTHER

SINGLE  
ZONE ☒MULTIPLE  
ZONE ☐

## 2. NAME OF OPERATOR

PETROLEUM DEVELOPMENT CORPORATION

## 3. ADDRESS OF OPERATOR

9720-B Candelaria, N.E., Albuquerque, New Mexico 87112

## 4. LOCATION OF WELL (Report location clearly and in accordance with any State requirements.)

At surface

1,980' FNL, 660' FWL

At proposed prod. zone

Same

## 14. DISTANCE IN MILES AND DIRECTION FROM NEAREST TOWN OR POST OFFICE\*

11.5 miles south of Maljamar, N. M.

OIL & GAS  
U.S. GEOLOGICAL SURVEY

## 15. DISTANCE FROM PROPOSED\*

LOCATION TO NEAREST

PROPERTY OR LEASE LINE, FT.

(Also to nearest drlg. unit line, if any)

660'

## 16. NO. OF ACRES IN LEASE

240

17. NO. OF ACRES ASSIGNED  
TO THIS WELL

40

## 18. DISTANCE FROM PROPOSED LOCATION\*

TO NEAREST WELL, DRILLING, COMPLETED,

OR APPLIED FOR, ON THIS LEASE, FT.

1,320'

## 19. PROPOSED DEPTH

11,000

## 20. ROTARY OR CABLE TOOLS

Rotary

## 21. ELEVATIONS (Show whether DF, RT, GR, etc.)

3701' GR

## 22. APPROX. DATE WORK WILL START\*

Feb 9, 1982  
Oct 25, 1981

## 23. PROPOSED CASING AND CEMENTING PROGRAM

SIZE OF HOLE	SIZE OF CASING	WEIGHT PER FOOT	SETTING DEPTH	QUANTITY OF CEMENT
17 1/2"	13-3/8"	48#	400'	450 sx. CIRCULATE
11"	8-5/8"	24#	4,000'	1,250 sx. (two stage) CIRCULATE
7-7/8"	4-1/2"	11.6#	11,000'	700 sx.

Set 13-3/8" casing at approximately 400'; circulate cement to surface. Wait on cement 8 hrs. Test BOP and surface casing to 500# for 30 min. before drilling out. Drill 11" hole to approx. 4,000'; set and cement 8-5/8" intermediate casing. Wait on cement for 12 hrs. Test 8-5/8" casing and BOP to 2,000#.

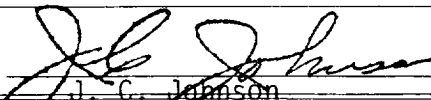
Drill 7-7/8" hole to 11,000' testing all significant shows of oil or gas. Set 4 1/2" casing at approx. 11,000'. See attached mud program. Complete by jet perforating indicated pay intervals and acidizing or fracturing as need is indicated.

A 1500-Series BOP and hydrill with remote controls will be used. See attached preventer layout, Exhibit "D". See attached supplemental multi-point drilling plan; and mud program, Exhibit "E".

IN ABOVE SPACE DESCRIBE PROPOSED PROGRAM: If proposal is to deepen or plug back, give data on present productive zone and proposed new productive zone. If proposal is to drill or deepen directionally, give pertinent data on subsurface locations and measured and true vertical depths. Give blowout preventer program, if any.

24.

SIGNED



TITLE President

DATE

9/23/81

(This space for Federal or State office use)

PERMIT NO.

APPROVED

APPROVAL DATE

APPROVED BY

(Orig. Sgd.) GEORGE H. STEWART  
OCT 5 1981

TITLE

DATE

CONDITIONS OF APPROVAL, IF ANY

FOR

JAMES A. GILLHAM  
DISTRICT SUPERVISOR

\*See Instructions On Reverse Side

**NEW MEXICO OIL CONSERVATION COMMISSION  
WELL LOCATION AND ACREAGE DEDICATION PLAT**

Form C-102  
Supersedes C-128  
Effective 1-1-65

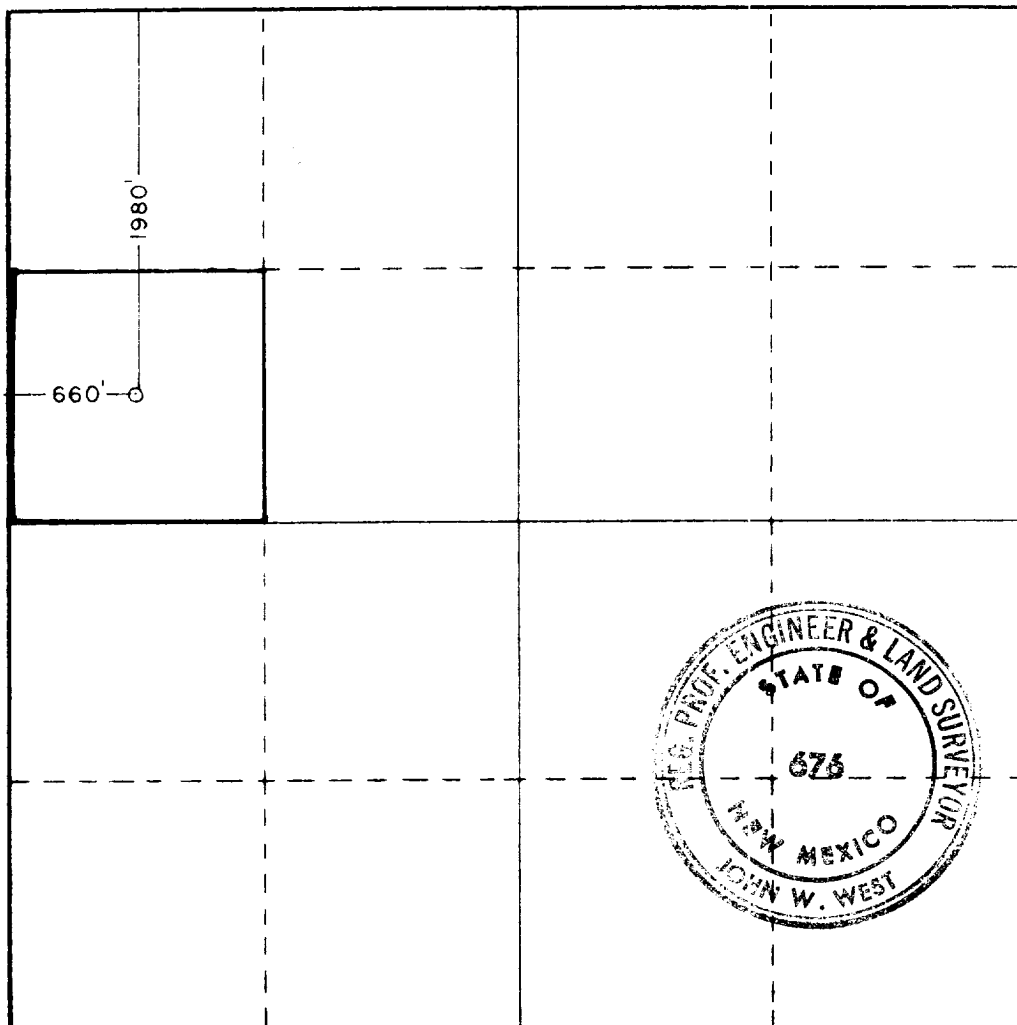
All distances must be from the outer boundaries of the Section

Operator <b>Petroleum Development Corp.</b>		Lease <b>Pedco Johnson Fed.</b>		Well No. <b>1</b>
Unit Letter <b>E</b>	Section <b>34</b>	Township <b>18South</b>	Range <b>32East</b>	County <b>Lea</b>
Actual Footage Location of Well: <div style="display: flex; justify-content: space-between;"> <span><b>1980</b> feet from the <b>North</b> line and</span> <span><b>660</b> feet from the <b>West</b> line</span> </div>				
Ground Level Elev. <b>3701.5'</b>	Producing Formation <b>Bone Springs</b>	Pool <b>Querecho Plains - Upper</b>	Dedicated Acreage: <b>40</b> Acres	

1. Outline the acreage dedicated to the subject well by colored pencil or hachure marks on the plat below.
2. If more than one lease is dedicated to the well, outline each and identify the ownership thereof (both as to working interest and royalty).
3. If more than one lease of different ownership is dedicated to the well, have the interests of all owners been consolidated by communitization, unitization, force-pooling, etc?  
☐ Yes    ☐ No    If answer is "yes," type of consolidation \_\_\_\_\_

If answer is "no," list the owners and tract descriptions which have actually been consolidated. (Use reverse side of this form if necessary.) \_\_\_\_\_

No allowable will be assigned to the well until all interests have been consolidated (by communitization, unitization, forced-pooling, or otherwise) or until a non-standard unit, eliminating such interests, has been approved by the Commission.



**CERTIFICATION**

I hereby certify that the information contained herein is true and complete to the best of my knowledge and belief.

Name Gary L. Roberts  
 Position Treasurer  
 Company PETROLEUM DEVELOPMENT CORP.  
 Date \_\_\_\_\_

I hereby certify that the well location shown on this plat was plotted from field notes of actual surveys made by me or under my supervision, and that the same is true and correct to the best of my knowledge and belief.

Date Surveyed Aug. 19, 1981  
 Registered Professional Engineer and Oil and Land Surveyor John W. West  
 Certificate No. **JOHN W. WEST 676**  
**PATRICK A. ROMERO 6863**  
**Ronald J. Eidson 3239**

0 330 660 990 1320 1650 1980 2310 2640 2970 3300 3630 3960 0

PETROLEUM DEVELOPMENT CORPORATION

Pedco-Johnson Federal #1

1,980' FNL, 660' FWL,  
Sec. 34, T18S, R32E,  
Lea County, N. M.

B.O.P. & CHOKE MANIFOLD SCHEMATIC  
SERIES 1500  
TO MEET SPECS. OF API BUL. D-13

NOT TO SCALE

EXHIBIT "D"

