

30-025-27666

5. LEASE DESIGNATION AND SERIAL NO.

NM-9018

6. IS INDIAN, ALLOTTEE OR TRIBE NAME

7. UNIT AGREEMENT NAME

Young Deep Unit

8. FARM OR LEASE NAME

9. WELL NO.

9

10. FIELD AND POOL, OR WILDCAT

No. Young Bone Spring

11. SEC., T., R., M., OR BLK.
AND SURVEY OR AREA

Sec-9, T-18S, R-32E

12. COUNTY OR PARISH

Lea

13. STATE

NM

APPLICATION FOR PERMIT TO DRILL, DEEPEN, OR PLUG BACK

1. TYPE OF WORK

DRILL ☒

DEEPEN ☐

PLUG BACK ☐

2. TYPE OF WELL

OIL WELL ☒

GAS WELL ☐

OTHER ☐

MULTIPLE ZONE ☐

3. NAME OF OPERATOR

Harvey E. Yates Company

4. ADDRESS OF OPERATOR

P. O. Box 1933, Roswell, New Mexico 88201

5. LOCATION OF WELL (Report location clearly and in accordance with any State regulations.)

At surface 1980 FNL & 1980 FEL

At proposed prod. zone Same

6. DISTANCE IN MILES AND DIRECTION FROM NEAREST TOWN OR POST OFFICE*

Approximately 6 1/2 mile south of Maljamar

7. DISTANCE FROM PROPOSED*

LOCATION TO NEAREST
PROPERTY OR LEASE LINE, FT.
(Also to nearest drilg. unit line, if any)

1980

8. NO. OF ACRES IN LEASE

17. NO. OF ACRES ASSIGNED
TO THIS WELL

40

9. DISTANCE FROM PROPOSED LOCATION*

TO NEAREST WELL, DRILLING, COMPLETED,
OR APPLIED FOR, ON THIS LEASE, FT.

1320

10. PROPOSED DEPTH

8700

20. ROTARY OR CABLE TOOLS

Rotary

21. ELEVATIONS (Show whether DF, RT, GR, etc.)

22. APPROX. DATE WORK WILL START*

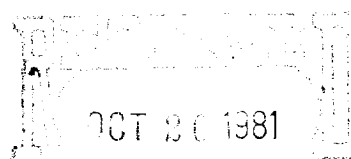
11/20/81

23.

PROPOSED CASING AND CEMENTING PROGRAM

SIZE OF HOLE	SIZE OF CASING	WEIGHT PER FOOT	SETTING DEPTH	QUANTITY OF CEMENT
17 1/2	13 3/8	48#	650	Circulate
11	8 5/8	24# - 28#	3600	Circulate
7 7/8	4 1/2	10.5# - 11.6#	9650	Sufficient to cover 600' above payzone.

MUD PROGRAM: 0 - 650' FW Gel/Soda Ash & Paper
650 - 3600' Brine Water
3600 - 8100' Fresh Water
8100 - TD Low Solids FW Mud



IN ABOVE SPACE DESCRIBE PROPOSED PROGRAM: If proposal is to deepen or plug back, give data on present productive zone and proposed new productive zone. If proposal is to drill or deepen directionally, give pertinent data on subsurface locations and measured and true vertical depths. Give blowout preventer program, if any.

24.

SIGNED

Paul Harrell

TITLE

Engineer

DATE

10/20/81

(This space for Federal or State office use)

PERMIT NO.

APPROVAL DATE

APPROVED BY

TITLE

DATE

CONDITIONS OF APPROVAL

NOV 27 1981

JAMES A. GILLHAM
DISTRICT SUPERVISOR

See Instructions On Reverse Side

[illegible]

RECEIVED
JAN 30 1981

THE CONSERVATION OF

NE EXICO OIL CONSERVATION COMMISSIC
WELL LOCATION AND ACREAGE DEDICATION PLAT

Form C-102
Supersedes C-128
Effective 1-1-65

All distances must be from the outer boundaries of the Section

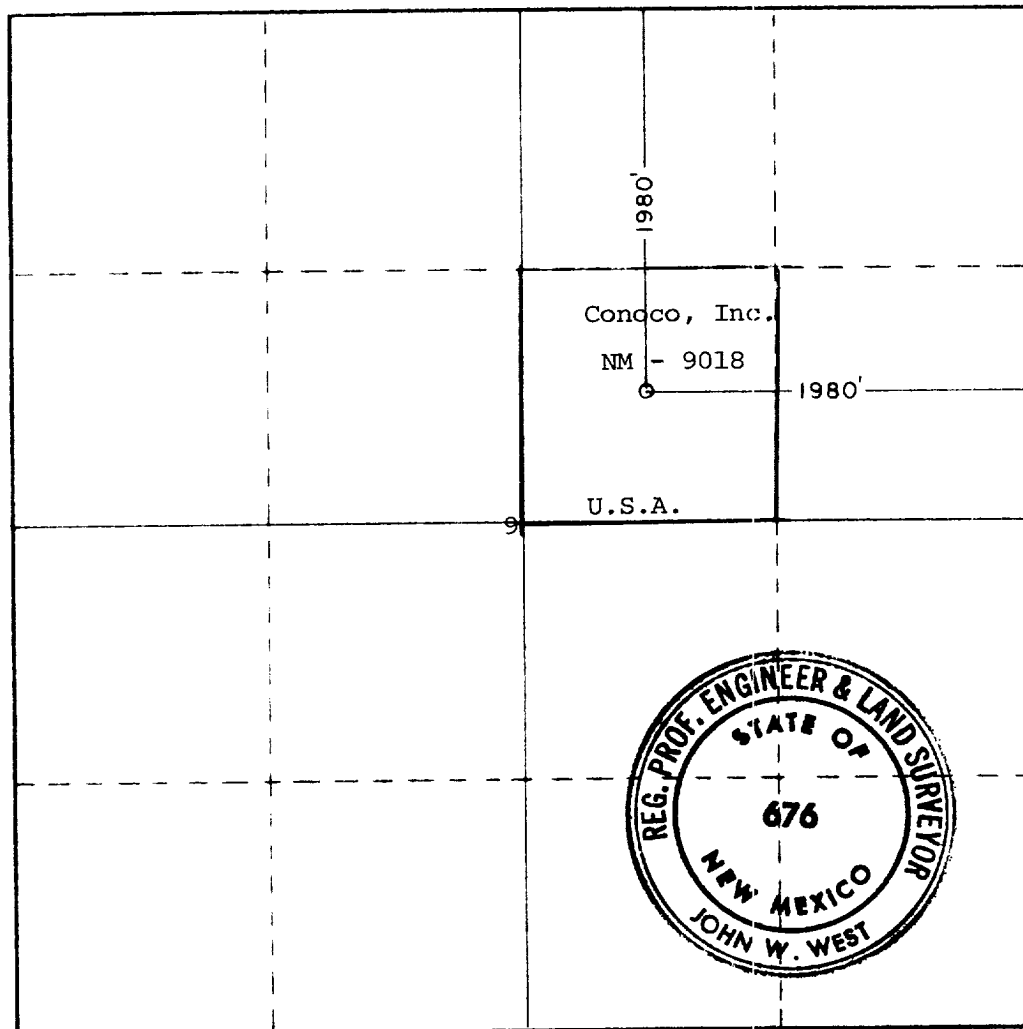
Operator Harvey E. Yates Co.			Lease Young Deep Unit			Well No. 9		
Tract Letter G	Section 9	Township 18 South	Range 32 East	County Lea				
Actual Location of Well:								
1980 feet from the North line and		1980 feet from the East line						
Ground Level Elev. 3827.6	Producing Formation Bone Spring		Pool No. Young Bone Spring			Dedicated Acreage: 40 Acres		

- 1 Outline the acreage dedicated to the subject well by colored pencil or hachure marks on the plat below.
- 2 If more than one lease is dedicated to the well, outline each and identify the ownership thereof (both as to working interest and royalty).
- 3 If more than one lease of different ownership is dedicated to the well, have the interests of all owners been consolidated by communitization, unitization, force-pooling, etc?

☐ Yes ☐ No If answer is "yes," type of consolidation _____

If answer is "no," list the owners and tract descriptions which have actually been consolidated. (Use reverse side of this form if necessary.) _____

No allowable will be assigned to the well until all interests have been consolidated (by communitization, unitization, forced-pooling, or otherwise) or until a non-standard unit, eliminating such interests, has been approved by the Commission.



CERTIFICATION

I hereby certify that the information contained herein is true and complete to the best of my knowledge and belief.

Peck Hardee

Name
Peck Hardee
Position
Engineer
Company
Harvey E. Yates Company

Date
10/23/81

I hereby certify that the well location shown on this plat was plotted from field notes of actual surveys made by me or under my supervision, and that the same is true and correct to the best of my knowledge and belief.

Date Surveyed
10-21-81

Registered Professional Engineer and/or Land Surveyor

John W. West

Certificate No. JOHN W. WEST 676
PATRICK A. ROMERO 6663
Ronald J. Eidson 3239

0 330 660 990 1320 1650 1980 2310 2640 2000 1600 1000 600 0

PR

ILLEGIBLE

DRAWWORKS

Brewster N-7-2W
Drum: 1-1/8" Lebus grooved
Compound: 2-engine oil bath chain drive
Brake: Hydromatic Parkersburg 40" Single

ENGINES

Two 410-H.P. D3531A Caterpillar Diesel.

DERRICK

Lee C. Moore, 127', 440,000 lb. nominal capacity.

SUBSTRUCTURE

Lee C. Moore, 10' high, 440,000 lb. nominal capacity.

MUD PUMPS

Pump No. 1: Emsco DB700, 700 H.P. with steel fluid end, 4-1/2" - 7-1/2" liners, 16" stroke. Compound-driven.
Pump No. 2: National C-250, powered by D353 Caterpillar diesel.

DRILL STRING

8400' - 4-1/2" Grade E, 16.60 lb.
3000' - 4-1/2" Grade E, 20 lb.
Tool Joints: 4" H-90, 6" OD
Thirty Drilco spiral-grooved 6-1/2" OD, 2-1/2" ID.
With 4" H-90 Joints.
Other sized drillpipe & drillcollars available.

BLOWOUT PREVENTERS

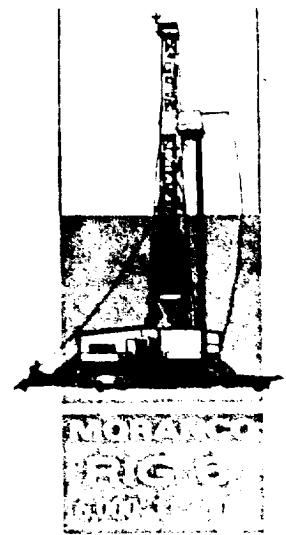
One Shaffer LWS hydraulic double 10" x 900 series. One Hydril 10" x 900 series.
Choke manifold 4" x 900 series flanged connections.
Payne 4 valve accumulator closing unit.

MUD SYSTEM

3 - 30 x 7-1/2 x 6 steel pits, with 700 Bbl. capacity. Complete low pressure circulating system, consisting of four submerged mud guns and two counter sunk jets in each pit. System utilizes a 6 x 8 centrifugal pump, powered by diesel.

EXHIBIT D

Harvey E. Yates Company
Young Deep Unit #9
Sec. 9, T-18S, R-32E
Lea County, New Mexico



MUD HOUSE

One - 8' x 30' Steel Storage House.

COMMUNICATIONS

24-Hour direct telephone interconnection through Hobbs (A.C. 505-397-3291) or Midland - Odessa (A.C. 915-563-0562).

OTHER EQUIPMENT

BLOCKS - McKissick 350 Ton

HOOK - BJ4300 350 Ton

SWIVEL - NAT N47 200 Ton

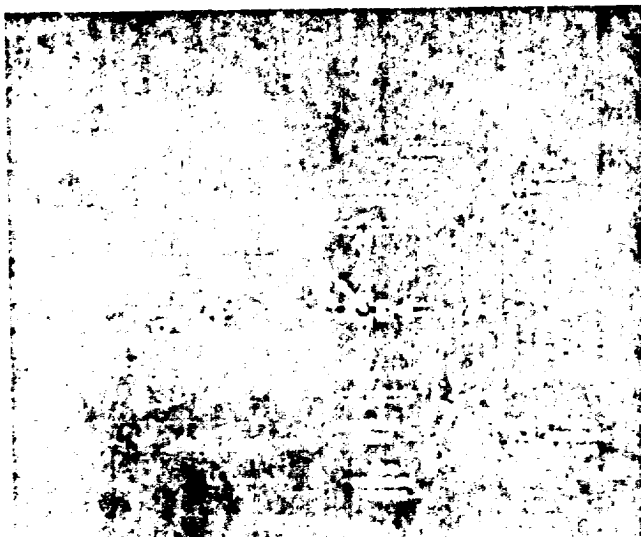
LIGHT PLANTS - Two 15 KW AC generators, powered by diesel engines.

LIGHTS - AC fluorescent or mercury - All vapor proof.

SHALE SHAKER - Link belt, single screen.

FRESH WATER STORAGE - two 500 Bbl., horizontal tanks.

HOUSING - 1 - 8' x 36' airconditioned trailer house, with sleeping and cooking facilities.



RECEIVED

NOV 30 1981

OIL CONSERVATION DIV